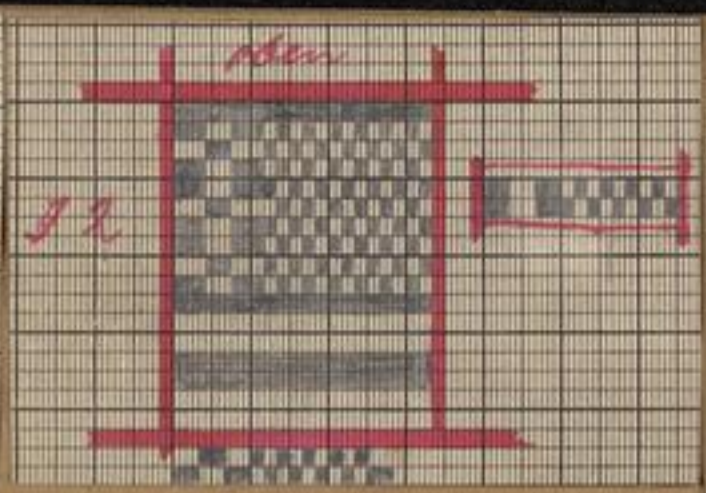
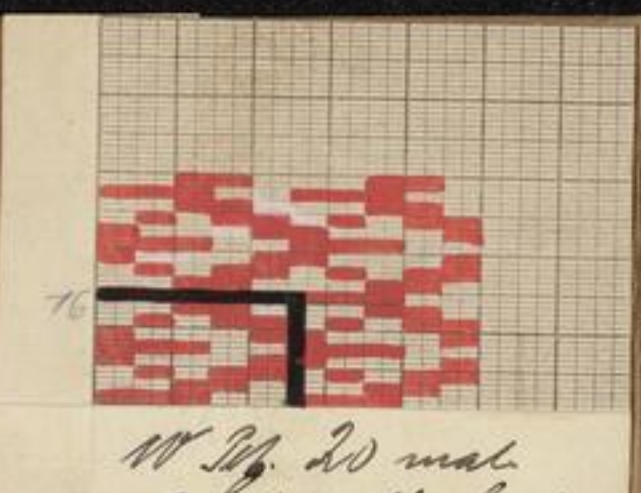


Rapport 12 Stk.
540 Plat
Zers. 1.
Granit.
mit gelber
mit gelber



Zers 3
Granit
2 x 40 = 80



10 Stk. 20 mal
2 Linien gelber für eine
N. 82 Hall.
H. Tannenbaum
24 x 16.
CHEMNITZ
34



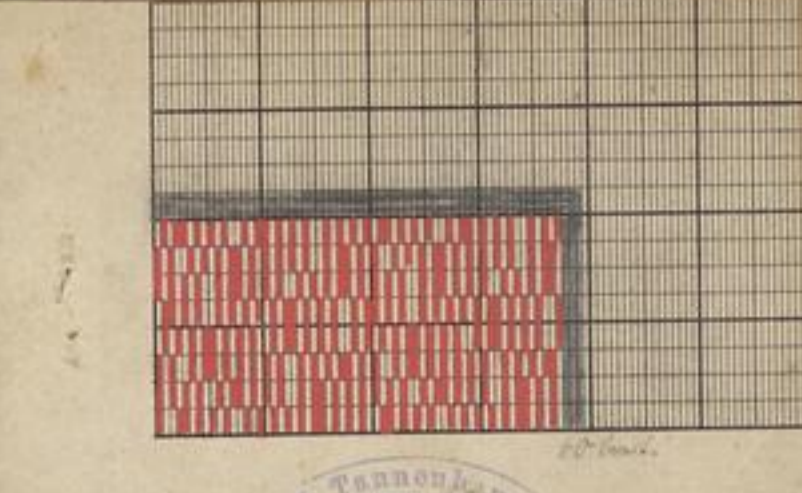
13126
D. 5. / min
600 Stk.
16 Züge



g. gänge 24 19
N. 6
600 Stk.
16 Züge

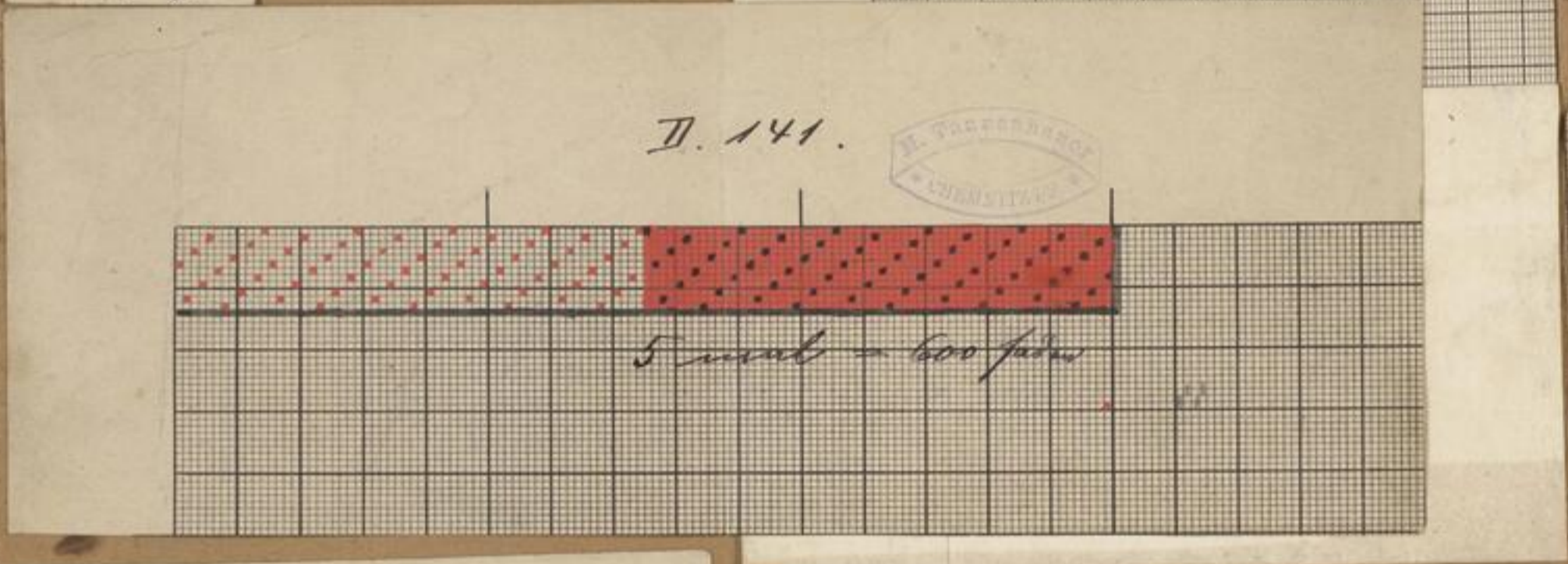


N. 6.
120 x 5 = 600 Plat.
16000



H. Tannenbaum
3. 11.
CHEMNITZ

Zers. 143.

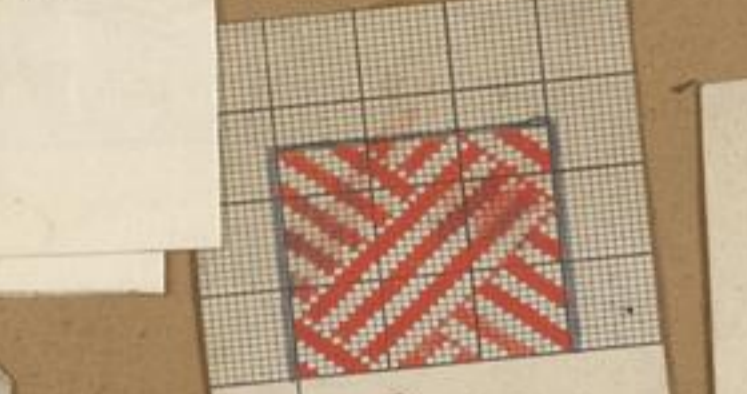


D. 141.
H. Tannenbaum
CHEMNITZ
5 mal = 600 faden

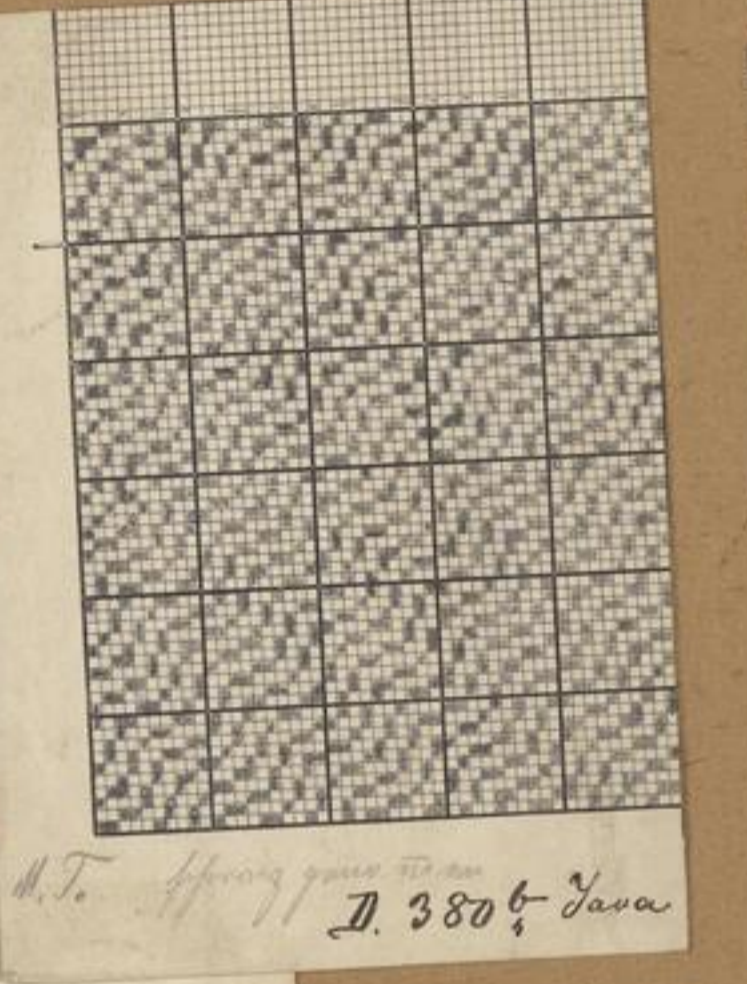


Zers. 216.

Def. 314
g. gänge
H. Köhler
Def. 171



30 Punkten
30 Küge D 368.



H. T. H. gänge
D. 380 Java



best



5 x 40 Plat 387 Stk
200
mit gelber
Def 100
H. Tannenbaum
CHEMNITZ
D 406
3. 6. 9. 12. 15. Stk faden
600 - 1000 faden

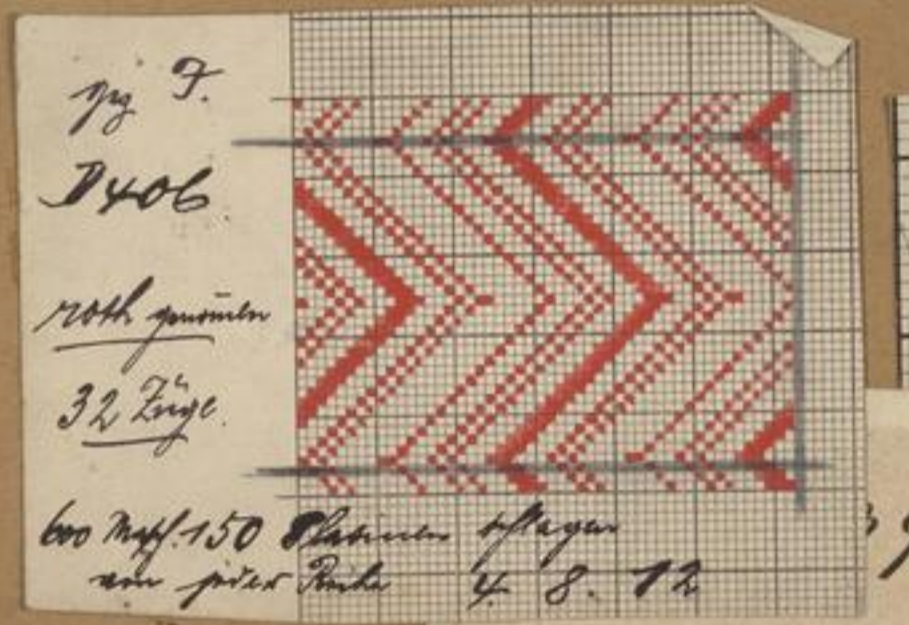
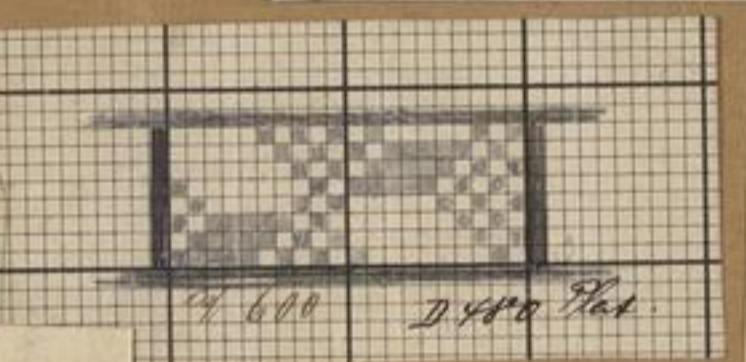
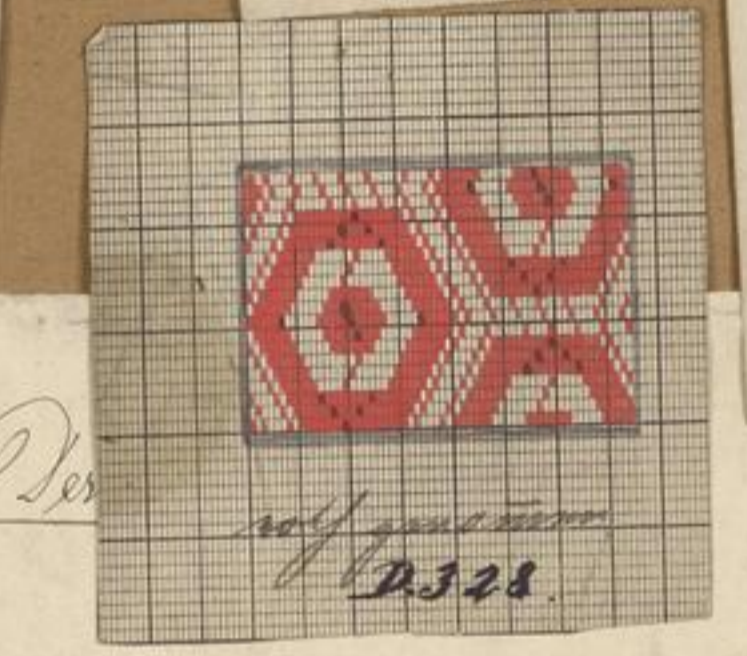


Fig 9.
D 406
rotte granit
32 Länge
600 mal 150 Punkten
mit gelber
mit gelber
4. 8. 12



4 600 D 480 Plat.



rotte granit
D 328



31 Stk
g. gänge
rotte granit
48 Plat

P 325

