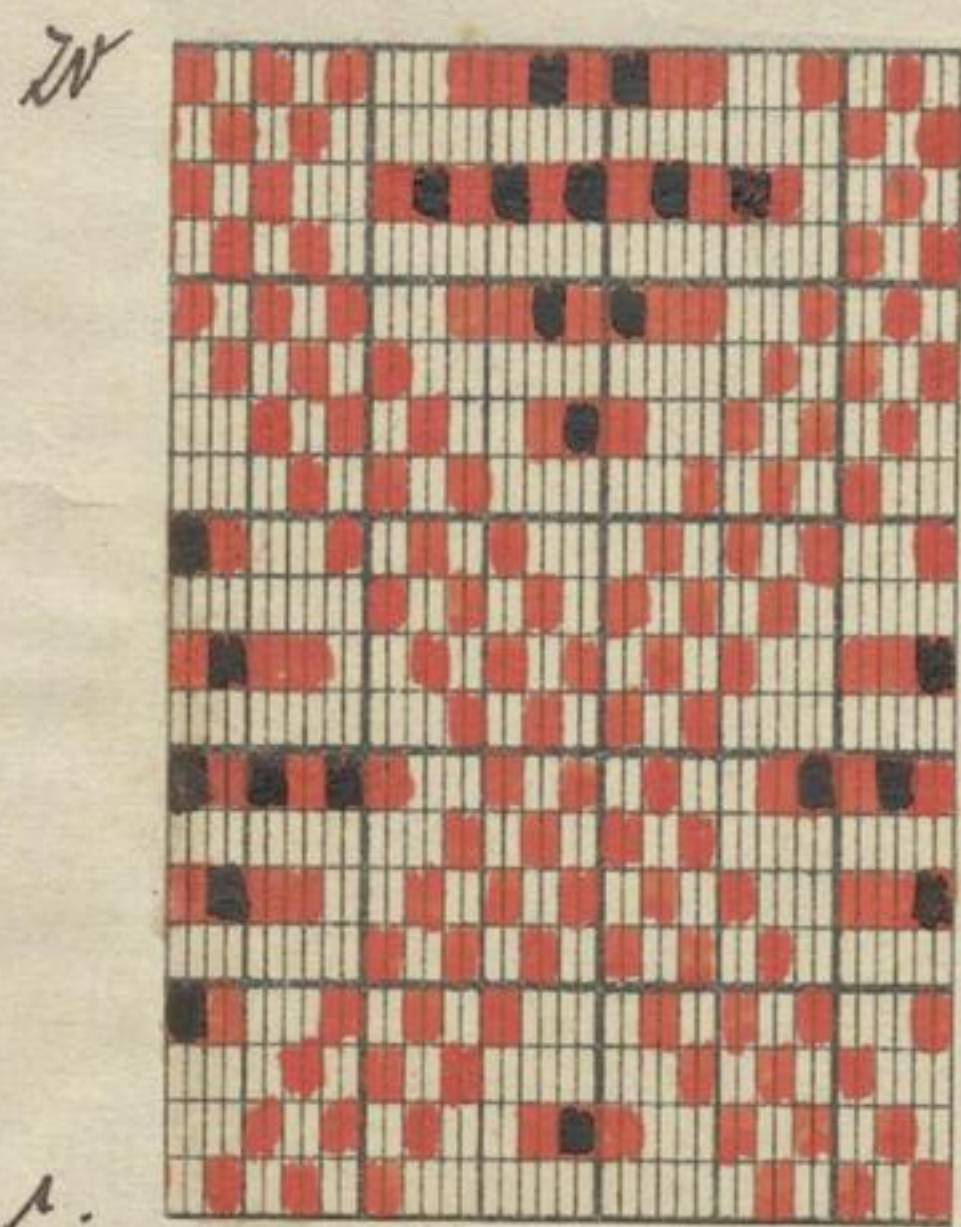


D. 640.

1320' fuz. March. 21840 Stk.
ll. nebrunstkunden
Lückelung.



Stk.	29 -	60 =	32 Stk.
	77 -	140 =	64 "
	157 -	204 =	48 "
	221 -	268 =	48 "
	301 -	348 =	48 "
	381 -	412 =	32 "
	469 -	500 =	32 "
	517 -	564 =	48 "
	581 -	628 =	48 "
	645 -	692 =	48 "
	709 -	756 =	48 "
	773 -	820 =	48 "
	837 -	852 =	16 "
	909 -	940 =	32 "
	957 -	1020 =	64 "
	1037 -	1100 =	64 "
	1117 -	1180 =	64 "
	1197 -	1252 =	56 "
			<u>840 Stk.</u>

1. 3. 4. 6. 7. 9. 10. 12. üpro. - 560 Stk.
 2. 5. 8. 11. üpro. - 280 Stk.
 2 Kettlinien gelten für eine.

1. Leinwand.

Voll.

leer.

2. Leinwand.

rot & schwarz gemischt.

weiss rot gemischt.

Leinwand: Stk. 1307 - 1310 = 24 Stk. Leinwand
 " 1311 - " " = 1 " "



P1674

