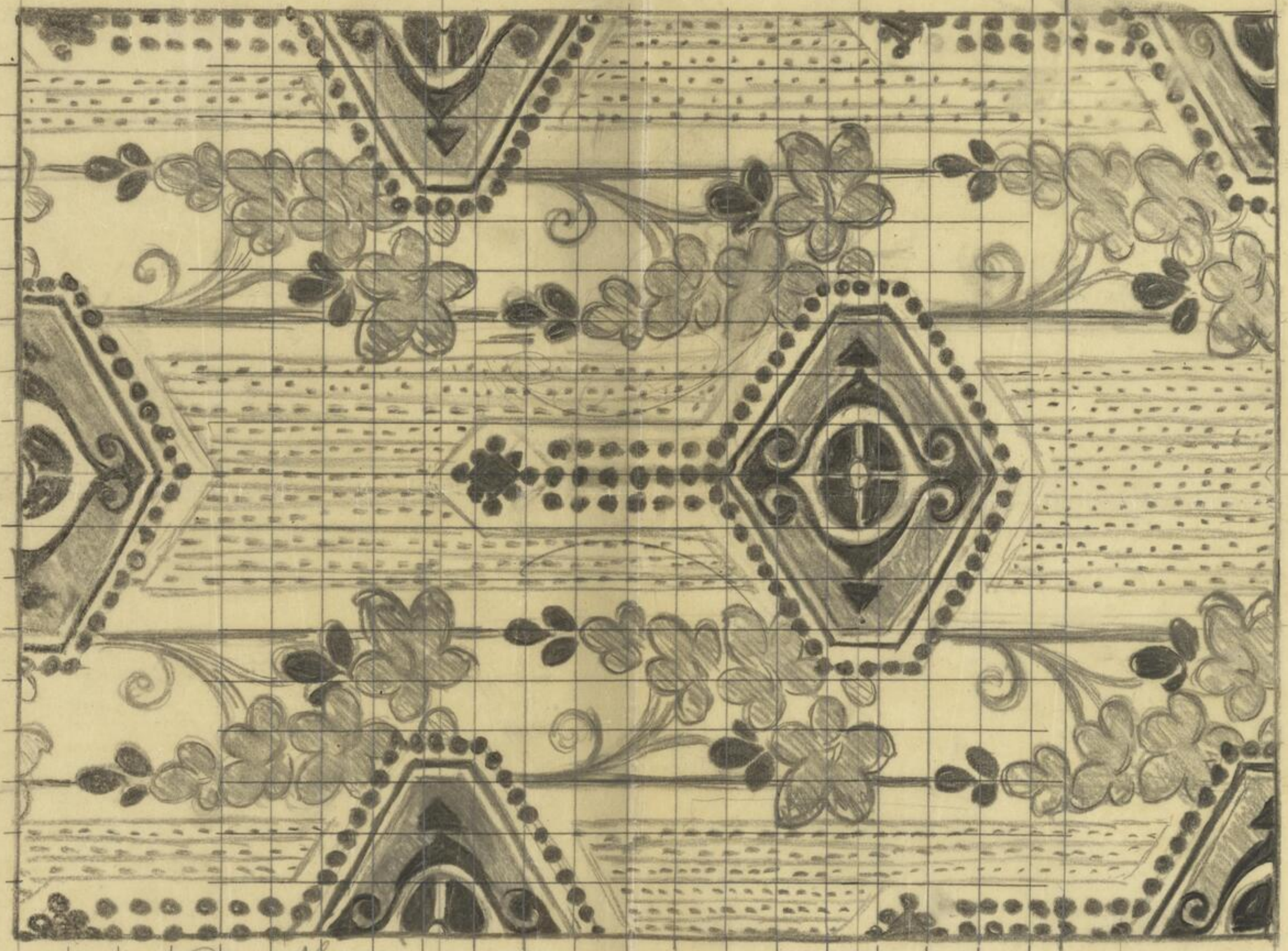


334

12 1/2 - 10 CR

Handwritten notes and sketches at the top of the page, including a large 'X' and some illegible text.



50 10
CHEMNITZ

CHEMNITZ

334 *Patim* *Null*
 $5 \frac{1}{3} \times 2 \frac{2}{3}$
Papier $\frac{8}{20}$

12 1/2
228
72
240

Less 840 $7 \frac{1}{2}$ 89 *Santen*

334

71804