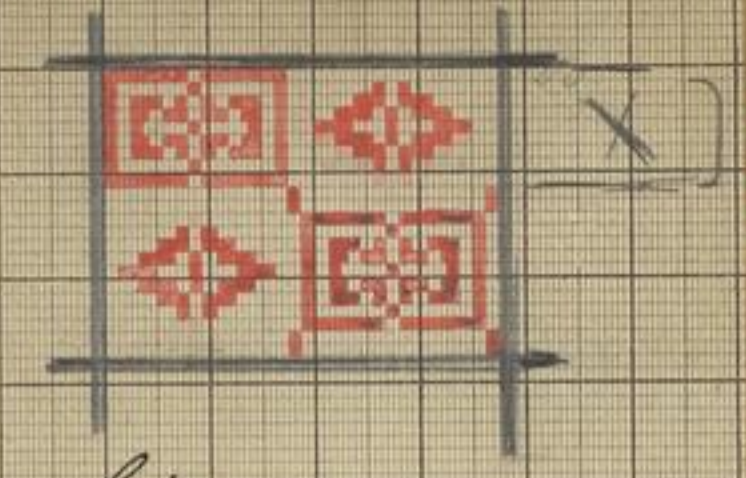
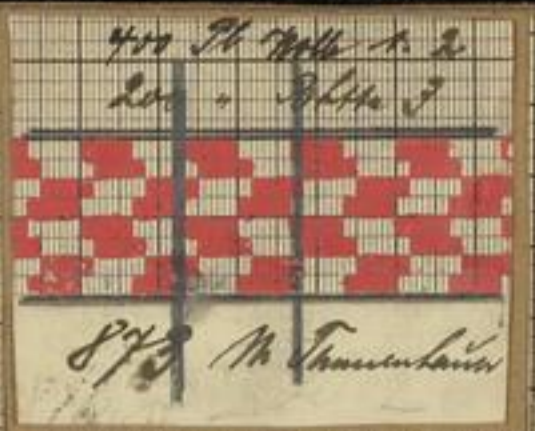


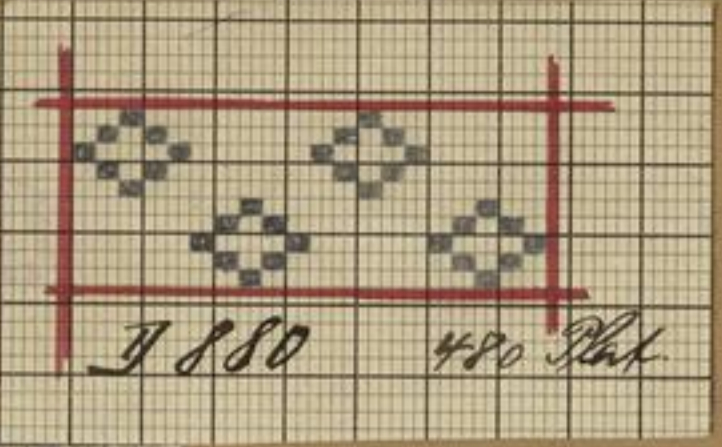
871



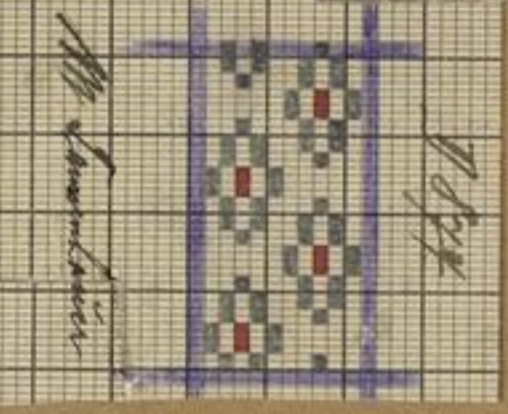
M. Tannenhauer  
2 x 300 Plat.



878 M. Tannenhauer

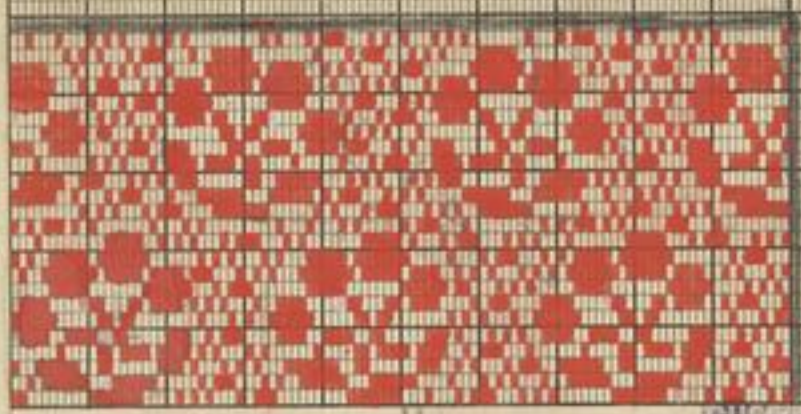


J 880 480 St. Höhe



M. Tannenhauer  
1 St. Höhe

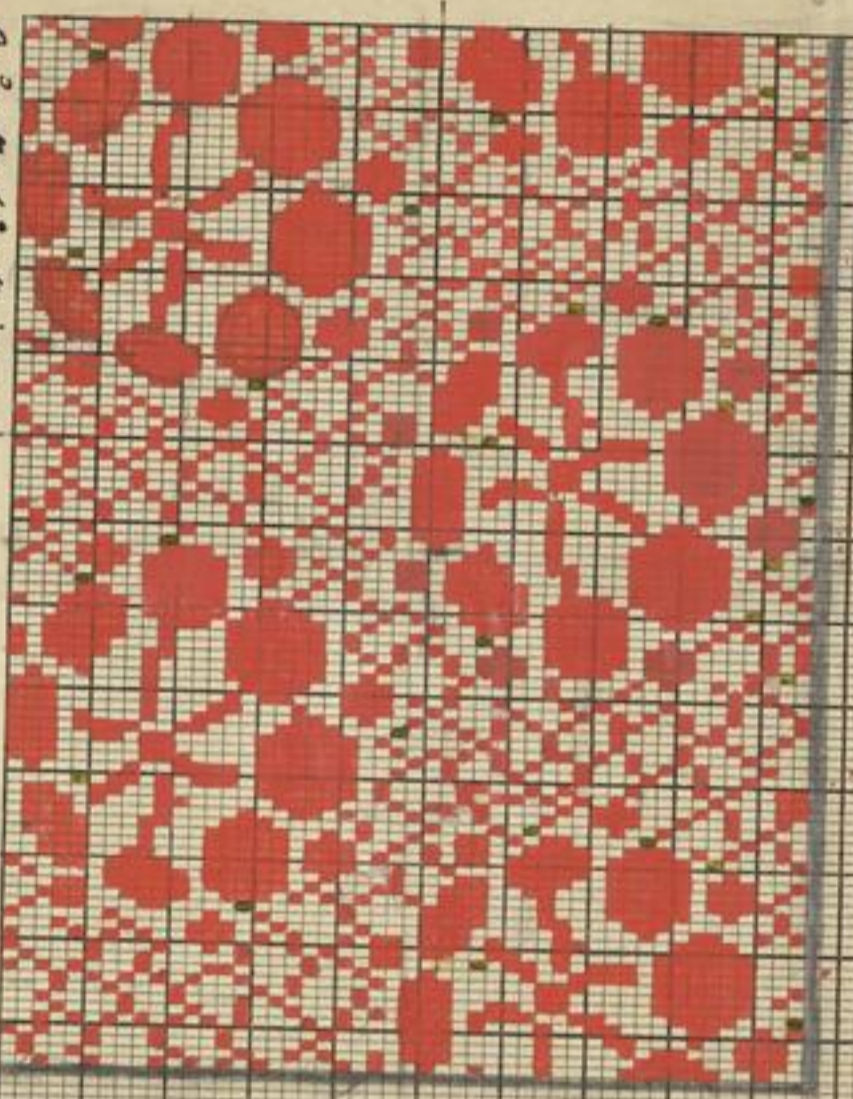
24



M. Tannenhauer  
305 St. Höhe  
J 886

GHEMNITZ  
23024

Handwritten notes and stamps on the right side of the page, including 'J 888' and 'M. Tannenhauer'.



J 888

M. Tannenhauer  
GHEMNITZ  
23028

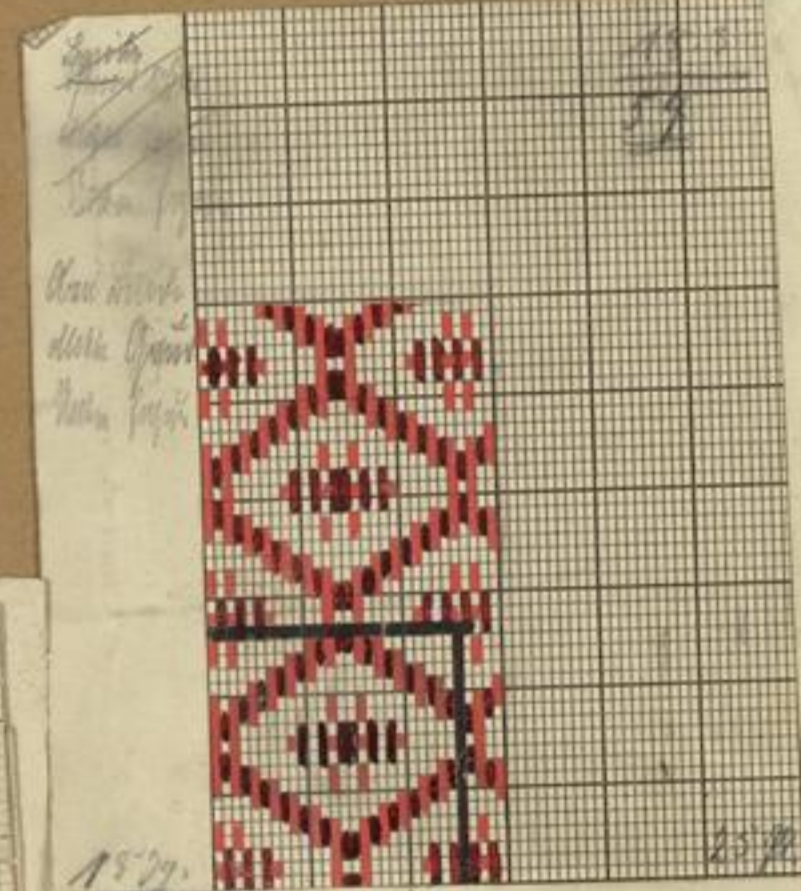
Handwritten notes on the left side of the page, including 'M. Tannenhauer'.



41/200 Plat. Höhe x 32/96 Höhe

Böckel & Löwenstein  
2670  
CHEMNITZ

Handwritten notes and stamps for pattern 889, including 'J 889' and 'M. Tannenhauer'.

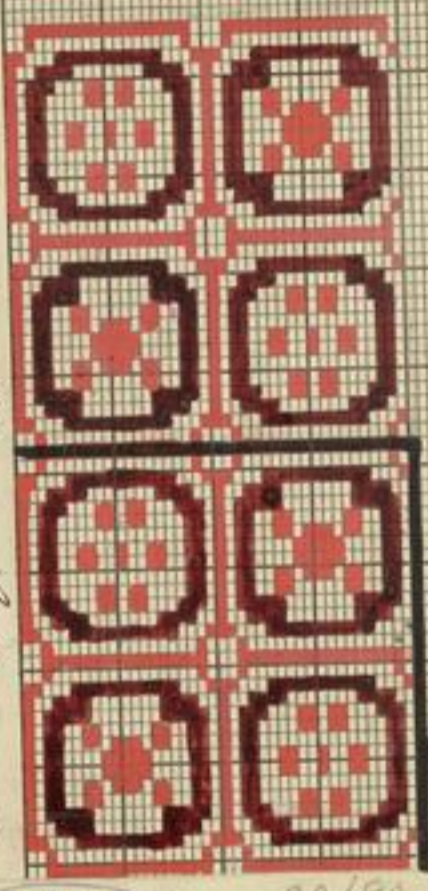


Böckel & Löwenstein  
2674  
CHEMNITZ

M. Tannenhauer  
1 St. Höhe  
J 891

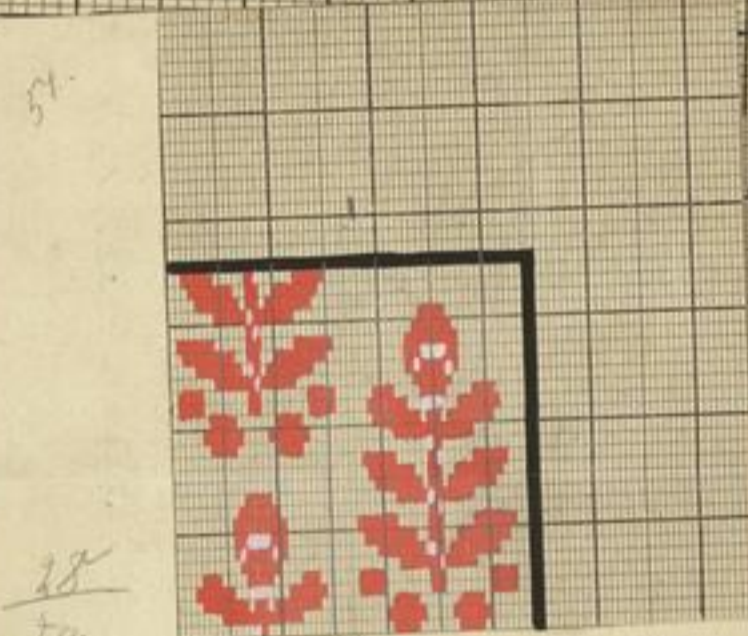


Handwritten notes and stamps on the right side of the page, including 'J 893' and 'M. Tannenhauer'.



Böckel & Löwenstein  
2672  
CHEMNITZ  
J 893

Handwritten notes for pattern 893, including '30/90' and '40/200 Plat. Höhe x 32/200 Höhe'.



Böckel & Löwenstein  
2685  
M. Tannenhauer  
4603  
CHEMNITZ  
J 895

Handwritten notes for pattern 895, including '1 St. Höhe x 1 St. Breite'.

P 1879

