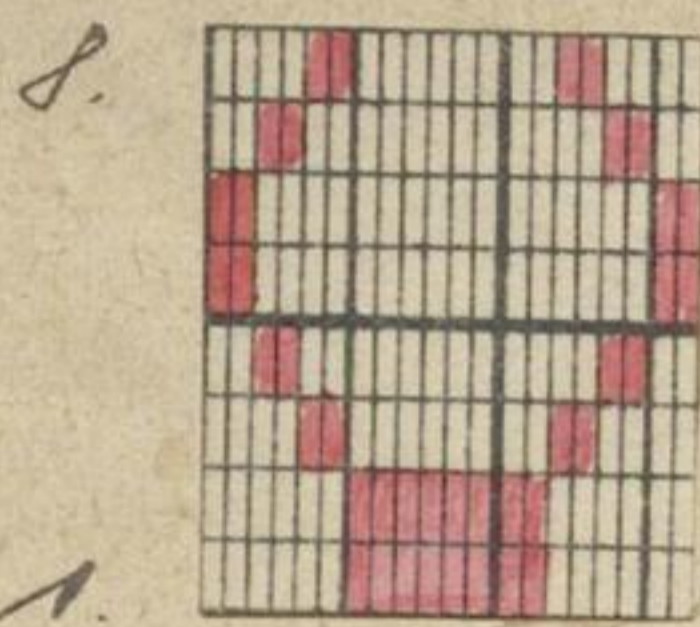


9. 586.

1320' fey. Marsh.
 21 840 St. lt.

unbeurkundeter

Aushebung.



8/16 Blatt.

	Voll:		Stk.
29	- 60	=	22
77	- 140	=	64
157	- 204	=	48
221	- 268	=	48
301	- 348	=	48
381	- 412	=	22
469	- 500	=	22
517	- 564	=	48
581	- 628	=	48
645	- 692	=	48
709	- 756	=	48
773	- 820	=	48
837	- 852	=	16
909	- 940	=	22
957	- 1020	=	64
1037	- 1100	=	64
1117	- 1180	=	64
1197	- 1252	=	56
			<u>840</u>

21. 3. 4. 6. 7. 9. 10. unv.
 = 560 Stk.

21 2. 5. 8. 11. unv.
 = 280 Stk.

1. Lauf.

voll.

leer.

2. Lauf.

not genau man.

voll.

Liste: 1207 - 1210 - öffentl. Linnwand.

P 2277

