

74

H  
22

**Praeger.**  
**Tanz u. Marsch.**  
**Part.**



74, III, 12.











Tanz und Marsch

Zu  
Furandot v. Schiller,  
componirt von

Heinrich Praeger.



C. F. Beckers.  
1825.







Tanz zu Turandot v. Schiller

p. H. Prager

Glocken

Violini

Violini musical notation

Violini musical notation

Viola

Viola musical notation

Piccoli

Piccoli musical notation

Oboi

Oboi musical notation

Clarinetti in C

Clarinetti in C musical notation

Corri in F

Corri in F musical notation

Clarino in F

Clarino in F musical notation

Clarini in C

Clarini in C musical notation

Timpanti in C. g.

Timpanti in C. g. musical notation

Triangoli  
Piatte  
Tam buro Grande

Triangoli, Piatte, Tam buro Grande musical notation

Bassi

Bassi musical notation





A handwritten musical score consisting of ten staves. The notation is dense and includes various musical symbols such as notes, rests, clefs, and bar lines. The paper shows signs of age, including some staining and wear at the edges. The score is written in a historical style, likely from the 18th or 19th century.



A page of handwritten musical notation on aged, yellowed paper. The page contains ten staves of music, arranged in two systems of five staves each. The notation is dense and includes various musical symbols such as clefs, notes, rests, and accidentals. The paper shows signs of age, including some staining and wear at the edges. The handwriting is in a historical style, likely from the 18th or 19th century.



Handwritten musical score on aged paper, featuring ten staves of music. The notation includes treble clefs, a key signature of one sharp (F#), and various rhythmic values. The score is divided into sections by repeat signs and includes performance markings such as "pizz." and "A".



Handwritten musical score on aged paper, featuring multiple staves of music. The notation includes various note values, rests, and dynamic markings such as *f* (forte), *arco*, *pizz.* (pizzicato), and *p* (piano). The score is written in a cursive hand typical of 18th or 19th-century manuscripts. The paper shows signs of age, including yellowing and some staining.





A page of handwritten musical notation on aged, yellowed paper. The score consists of approximately 14 staves. The notation is in a historical style, featuring various note values, rests, and dynamic markings such as *f* (forte), *p* (piano), and *ff* (fortissimo). There are also some markings that appear to be *ff* or *fff* with a vertical line through them. The paper shows signs of wear, including creases and some discoloration, particularly along the left edge.



glocken:

Coda

D. S. D. C.  
senza Repet.  
bis A

mf

mf

mf

p

*[Handwritten scribbles]*

p





This image shows a page of handwritten musical notation on aged, yellowed paper. The page is numbered '40' in the top left corner. It contains approximately 15 staves of music. The notation includes various note values, rests, and dynamic markings such as 'f' (forte) and 'p' (piano). The music is written in a historical style, likely from the 18th or 19th century. The paper shows signs of wear, including some staining and foxing.



Handwritten musical score on 11 staves. The notation includes various rhythmic values, rests, and dynamic markings such as *ff* (fortissimo) and *f* (forte). The manuscript is written in a historical style, likely from the 18th or 19th century. The paper shows signs of age, including some staining and wear at the edges.



Handwritten musical score on aged paper, featuring multiple staves of music. The notation includes various note values, rests, and dynamic markings. A prominent annotation reads "1mo col Viol: 1mo" with a "2da" marking below it. The paper shows signs of age, including yellowing and some staining.



A page of handwritten musical notation on aged paper, numbered 13 in the top right corner. The page contains 13 horizontal staves. The notation is written in dark ink and includes various musical symbols such as clefs (treble and bass), notes (quarter, eighth, and sixteenth notes), rests, and bar lines. The handwriting is in a historical style, likely from the 18th or 19th century. The paper shows signs of age, including some staining and wear at the bottom edge.



Marcia Maestoso e  
ben marcato

Violini *p* *mf*

*p* *mf*

Viola *p*

Flauti

Clarinetti  
in B.

Corni  
in Es

Fagotti

Clarinone  
in D.

Clarinini  
in Es

Timpami  
in Es. B.

Triangolo  
Piaffe e  
Tamburo  
Grande

Bassi *p*



Handwritten musical notation on three staves. The top staff features a complex melodic line with many sixteenth and thirty-second notes, some beamed together. The middle and bottom staves provide a rhythmic accompaniment with shorter note values and rests.

A series of ten empty musical staves, each with five lines and a vertical bar line, serving as a placeholder for further notation.

Handwritten musical notation on a single staff at the bottom of the page, continuing the piece with a melodic line and some rests.



Handwritten musical notation on a single staff, featuring a complex melodic line with many sixteenth and thirty-second notes.

Handwritten musical notation on a single staff, featuring a complex melodic line with many sixteenth and thirty-second notes.

Handwritten musical notation on a single staff, featuring a complex melodic line with many sixteenth and thirty-second notes. Includes the word "Solo" on the left and "Flautini" on the right.

Handwritten musical notation on a single staff, featuring a complex melodic line with many sixteenth and thirty-second notes.

Handwritten musical notation on a single staff, featuring a complex melodic line with many sixteenth and thirty-second notes.

Handwritten musical notation on a single staff, featuring a complex melodic line with many sixteenth and thirty-second notes.

Handwritten musical notation on a single staff, featuring a complex melodic line with many sixteenth and thirty-second notes.

Handwritten musical notation on a single staff, featuring a complex melodic line with many sixteenth and thirty-second notes.

Handwritten musical notation on a single staff, featuring a complex melodic line with many sixteenth and thirty-second notes.

Handwritten musical notation on a single staff, featuring a complex melodic line with many sixteenth and thirty-second notes.

Handwritten musical notation on a single staff, featuring a complex melodic line with many sixteenth and thirty-second notes.

Handwritten musical notation on a single staff, featuring a complex melodic line with many sixteenth and thirty-second notes. Includes the word "pizz:" at the bottom left.

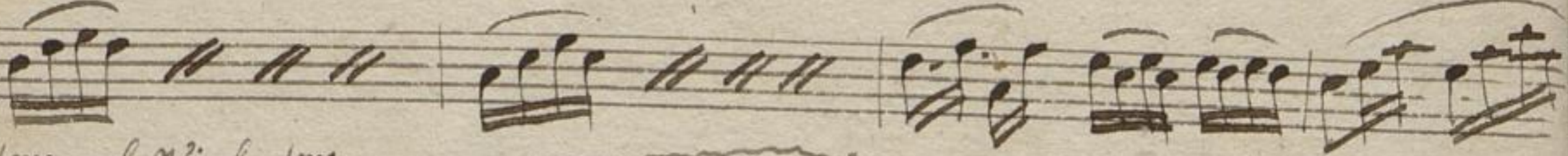
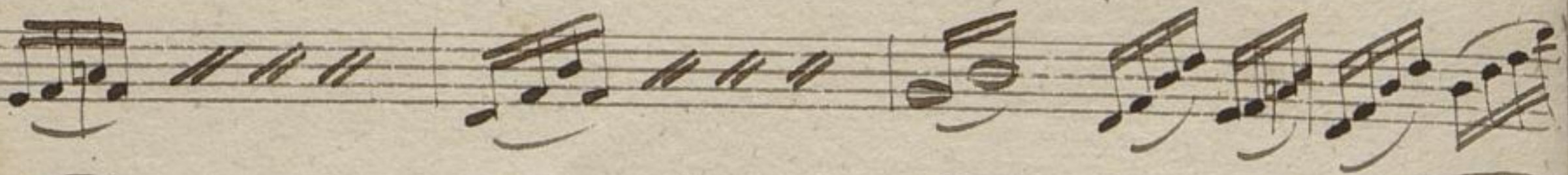




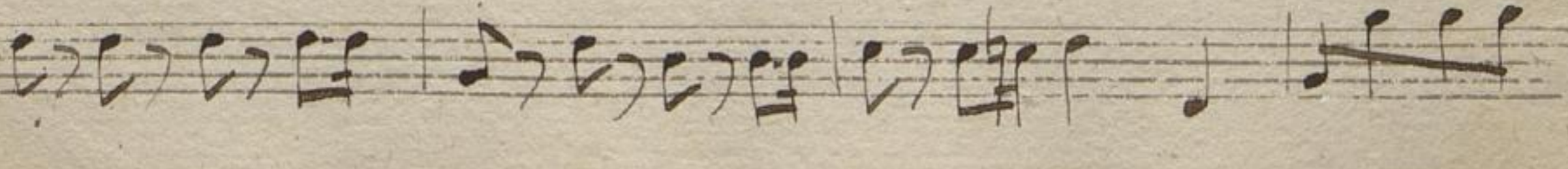
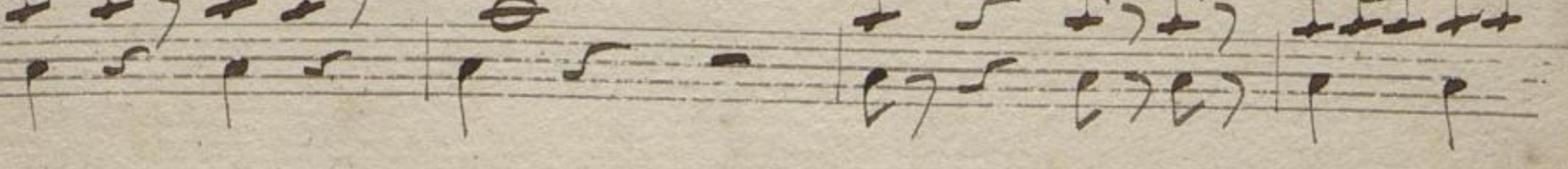
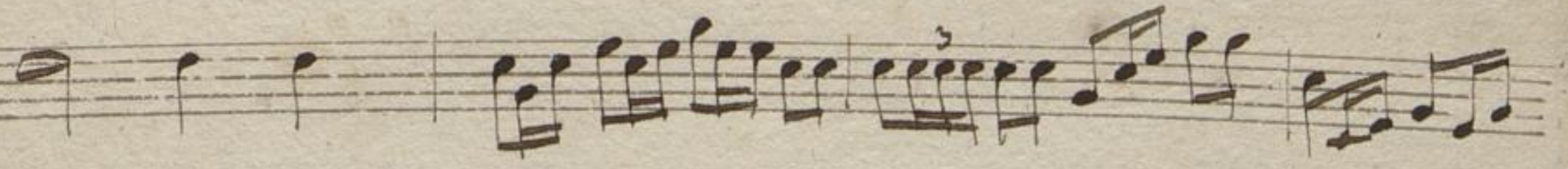
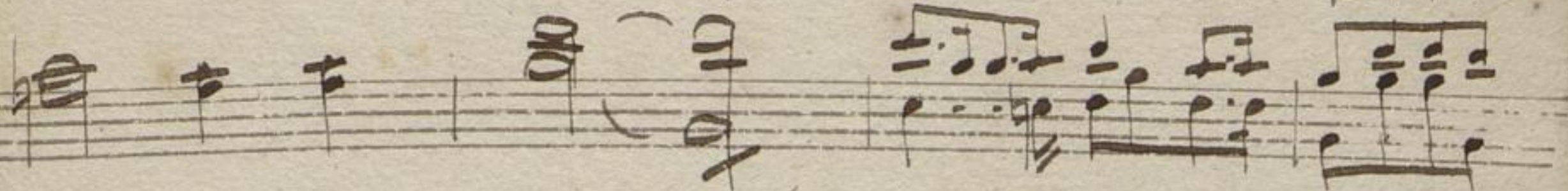
Handwritten musical score on aged paper, consisting of ten staves. The notation includes various note values, rests, and dynamic markings such as *f*. A specific instruction *1mo col Viol: 1mo* is written between the third and fourth staves. The bottom of the page features the instruction *Arco*.







*1<sup>mo</sup> col Viol. 1<sup>mo</sup>*





Musical staff with complex rhythmic notation, including sixteenth and thirty-second notes, and rests.

Musical staff with notes and rests, including the handwritten instruction *unis. in 8<sup>va</sup> Basfo*.

Musical staff with notes and rests, including a *p* dynamic marking.

Musical staff with dense rhythmic notation, including sixteenth and thirty-second notes, and rests, with *mf* dynamic markings.

Musical staff with notes and rests, including a *mf* dynamic marking.

Musical staff with notes and rests, including a *mf* dynamic marking.

Musical staff with notes and rests, including a *f* dynamic marking.

Musical staff with notes and rests, including a *f* dynamic marking.

Musical staff with notes and rests, including a *f* dynamic marking.

Musical staff with notes and rests, including a *p* dynamic marking.

Musical staff with notes and rests, including a *p* dynamic marking.

Musical staff with notes and rests, including a *pizz.* dynamic marking.

Musical staff with notes and rests, including a *pizz.* dynamic marking.





Handwritten musical score on ten staves. The top staff features a complex, dense texture of notes, possibly a keyboard or multi-measure rest. The remaining staves show a variety of rhythmic patterns, including quarter notes, eighth notes, and rests, with some dynamic markings like 'f' and 'ff'.



Handwritten musical score on aged paper, consisting of ten staves. The notation includes various rhythmic values, accidentals, and dynamic markings such as *p*, *pp*, and *ppp*. The paper shows signs of wear and discoloration.





Handwritten musical score on aged paper, page 22. The score consists of approximately 12 staves of music. The notation includes various note values, rests, and dynamic markings such as *ff* (fortissimo) and *arco*. A wavy line above the first staff is labeled *gola*, and the word *loco* is written above the second staff. The music features complex rhythmic patterns and dense chordal textures. The paper shows signs of age, including some staining and a small tear at the bottom left corner.



Coda

This page contains a handwritten musical score for a Coda section, consisting of 13 staves. The notation is dense and complex, featuring a variety of rhythmic patterns and textures. The first staff begins with a treble clef and a key signature of one sharp (F#). The music is characterized by frequent use of triplets, indicated by the number '3' below the notes. The notation includes many beamed notes, creating a sense of rapid movement and intricate rhythmic detail. The staves are arranged in a single system, with each staff containing several measures of music. The handwriting is clear and consistent throughout the page.





A page of handwritten musical notation on aged, yellowed paper. The page is numbered '214' in the top left corner. It features approximately 12 staves of music. The notation includes various note values, rests, and dynamic markings such as 'ff' (fortissimo) and 'mp' (mezzo-piano). There are several measures with double bar lines and repeat signs. The handwriting is in a historical style, likely from the 18th or 19th century. The paper shows signs of wear, including some staining and a small tear at the bottom edge.







