

Escher, Wyfs & Co in Zürich. (Fig 1-6.)

E. Walschaerts in Brüssel. (Fig 7-8.) Socin & Wick in Basel. (Fig 9-10.)

Ventilmaschinen.

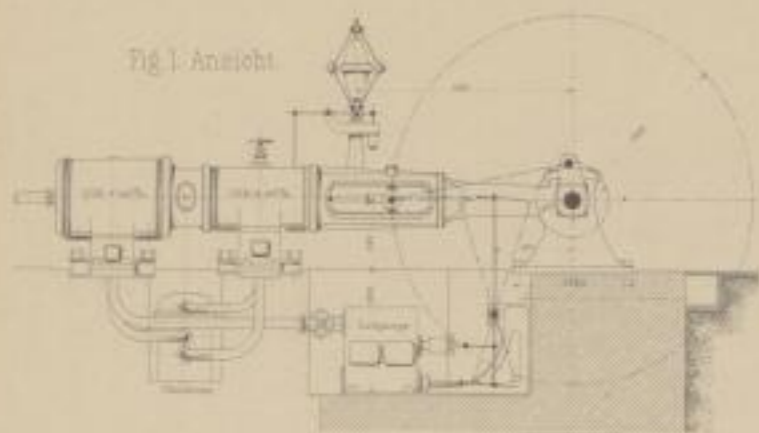


Fig 1. Ansicht.

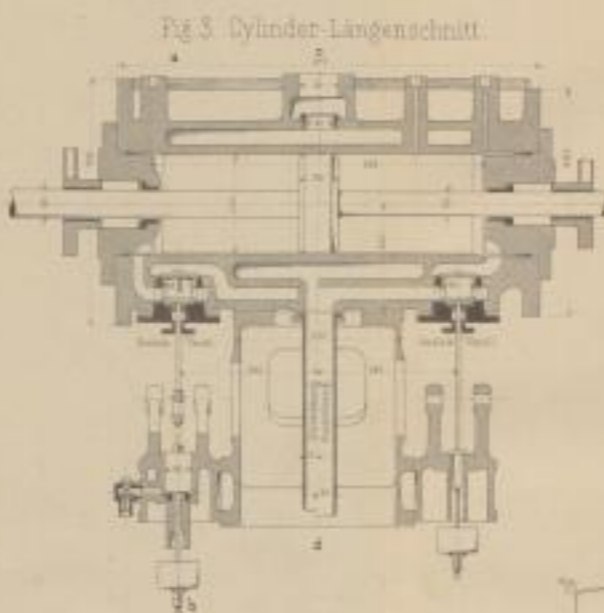


Fig 3. Cylinder-Längenschnitt.

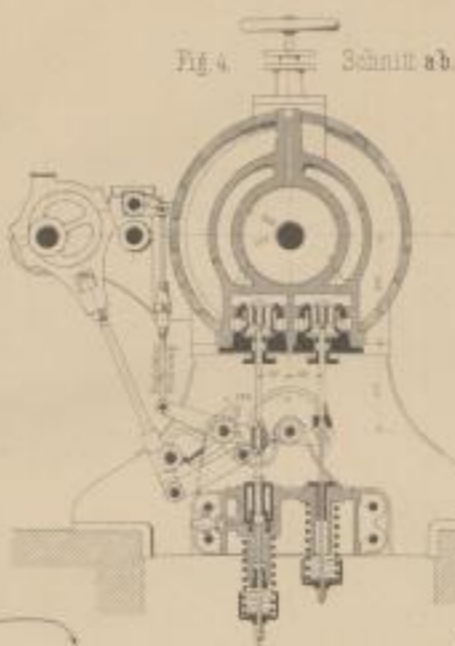


Fig 4. Schnitt ab.

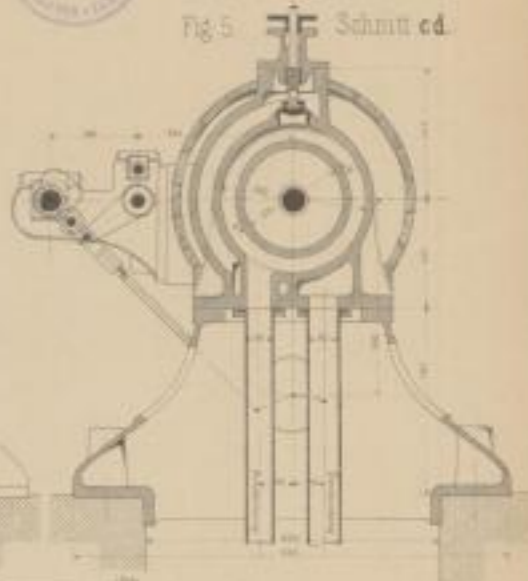


Fig 5. Schnitt cd.

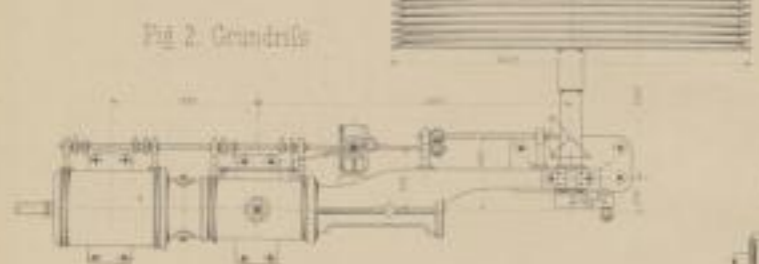


Fig 2. Grundriss.

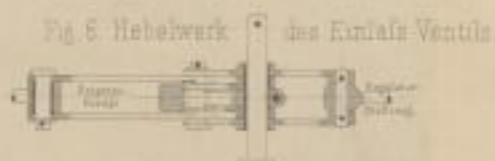


Fig 6. Hebelwerk des Einlaß Ventils.



1/2 Zoll Durchmesser  
60 Touren pr. Min.  
100% Drossel.

Diagramme  
einer Ventill-Maschine von  
100% Drossel. 600% Drossel  
von Socin & Wick in Basel.  
(Fig 9-10.)

Dampfmaschine von E. Walschaerts in Brüssel. Fig 7-8.

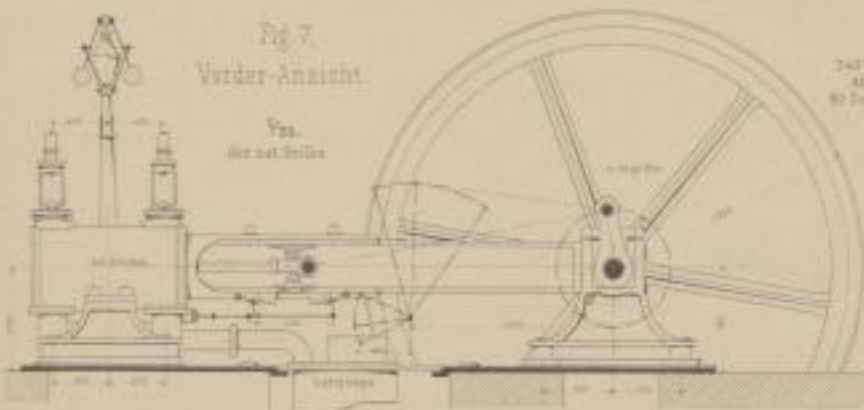


Fig 7.  
Vorder-Ansicht.

Von  
der nat. Größe

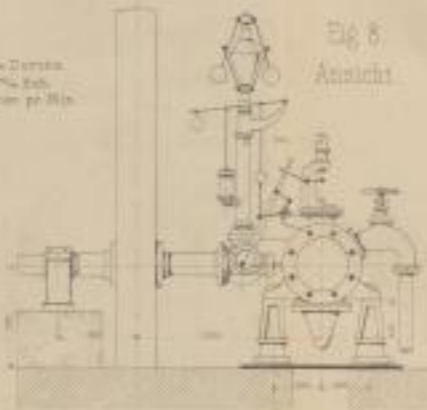


Fig 8.  
Ansicht

240 mm Durchmesser  
400 mm Hub  
60 Touren pr. Min.

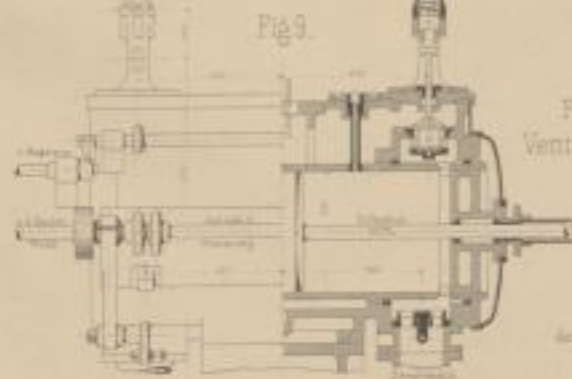


Fig 9.

Fig 9-10  
Ventilmaschine

Von  
der nat. Größe

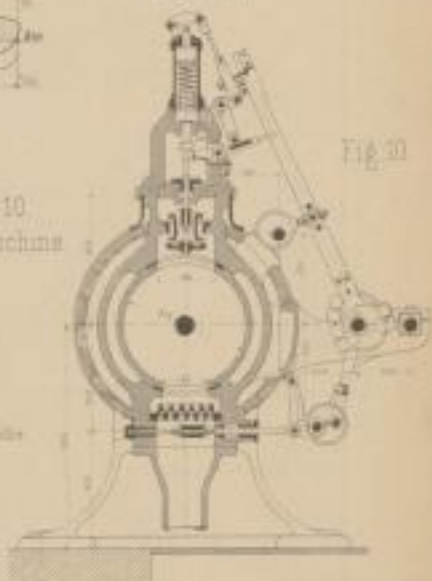


Fig 10.

Werk von Escher & Co. in Zürich. 1:1. Schiffsbauwerk Wien.

Maßstab (Fig. 1-2.) 1/20, (Fig. 3-5.) 1/20, (Fig. 6.) 1/20, (Fig. 7-8.) 1/20.

Entworfen & Gezeichnet v. G. Reiller. Wien.