

E. Remeaux in Lens, (Société des mines de Lens, P.d.C.)

Fördermaschine mit Ventil-Steuerung.



Fig. 1 Längenschnitt.

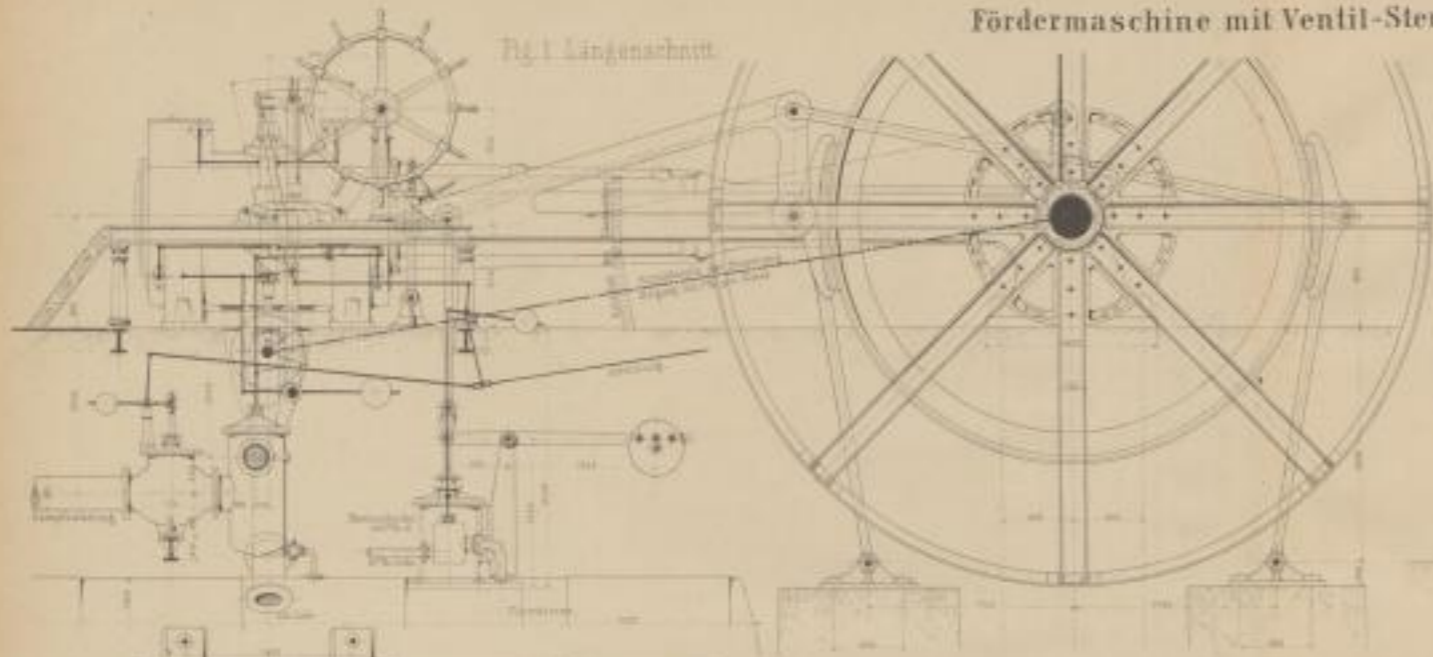


Fig. 3 Cylinder-Längenschnitt.

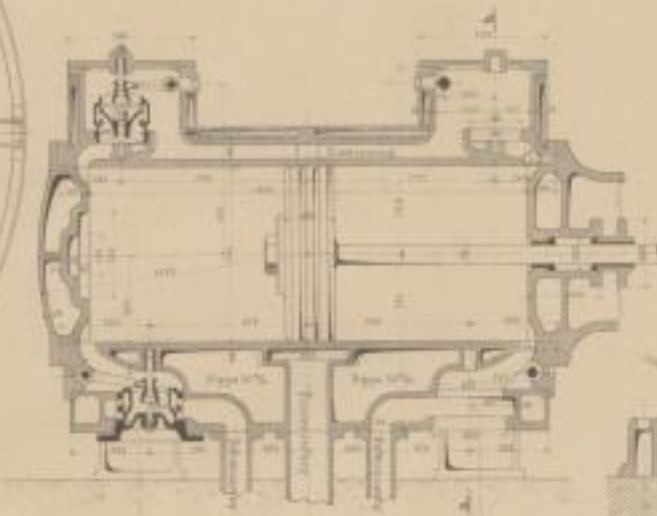


Fig. 5 Schnitt ab.

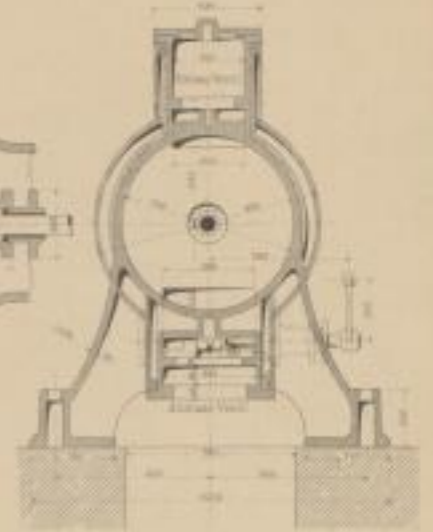


Fig. 4 Ansicht der Steuerung.

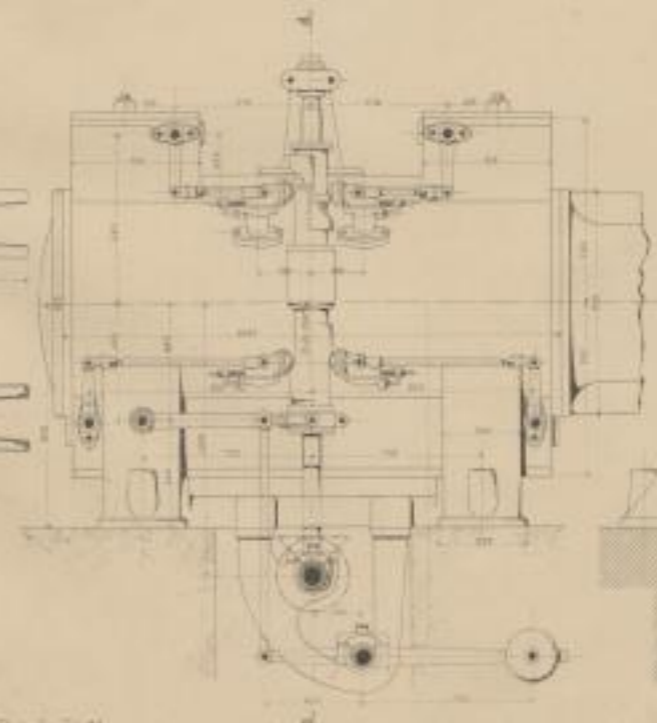


Fig. 6 Schnitt cd.

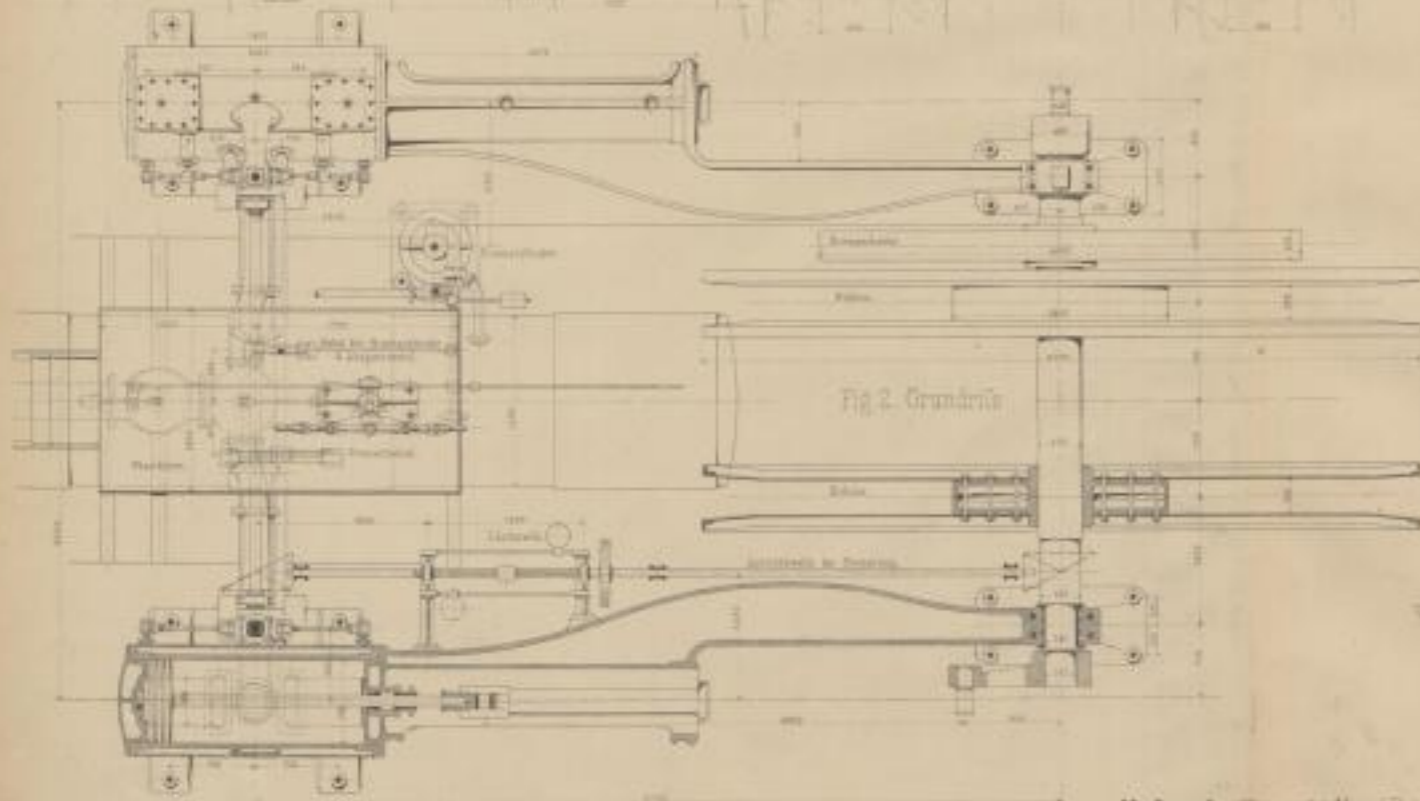
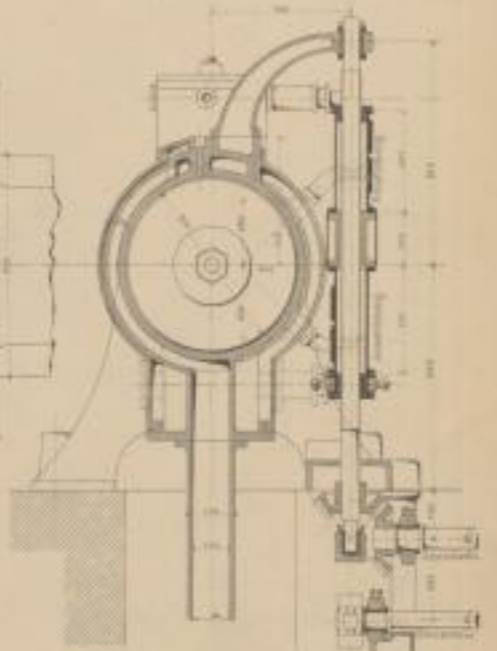


Fig. 2 Grundriss.

Mafstab: (Fig. 1-2) 1/100, (Fig. 3-6) 1/50.

Gezeichnet v. Schindler & Schindler in Wien.

Verlag von F. Vieweg & Sohn, Braunschweig.