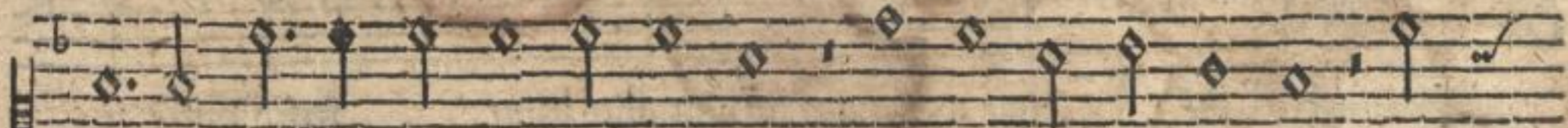


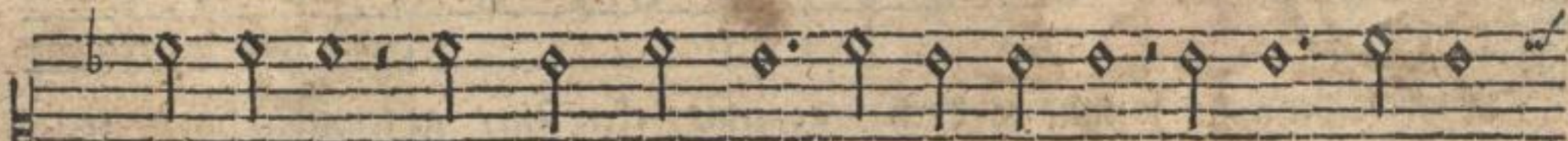
I stu der Hensel schü he/ der hen sel schü



he/ was ist dir dein armbrust nü he/ weil dus nicht spannen kanst/ prim



pram/ prim pram/ ij. prim pram/ ij. prim pram/ ij. da giengen die



glöcklein an/ prim pram/ ij. prim pram/ ij. prim pram/ ij.



da gien gen die glöcklein an.

F I N I S.