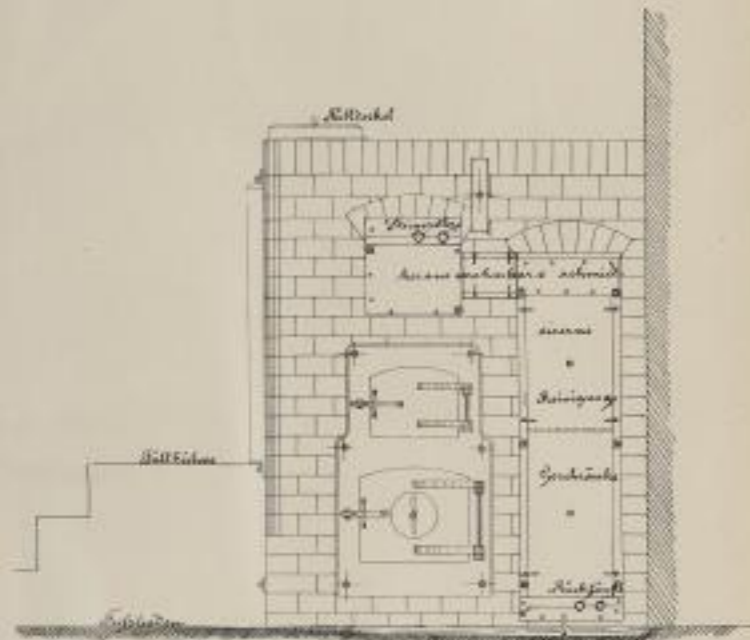
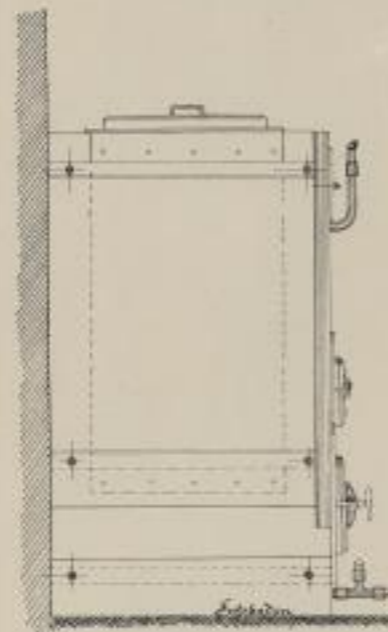


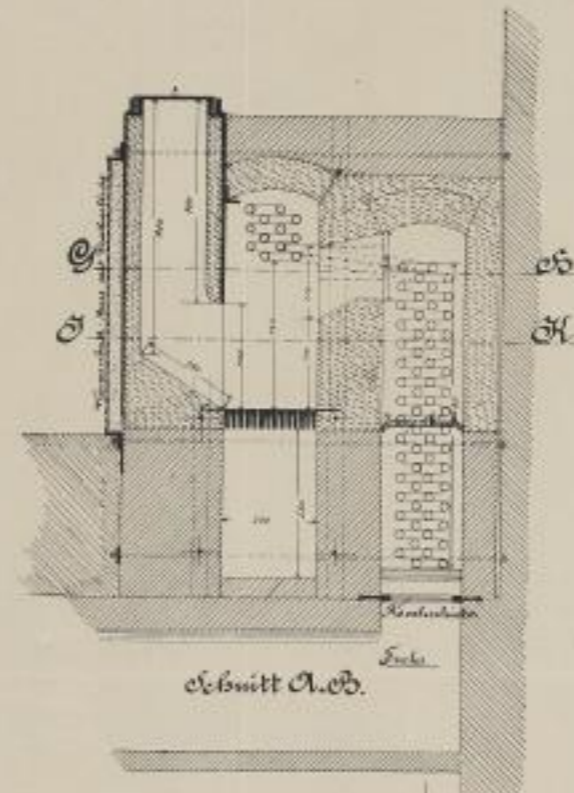
A. Oslender, Ueber Verwendung von Gascoke für Centralheizungen und ähnliche Anlagen.



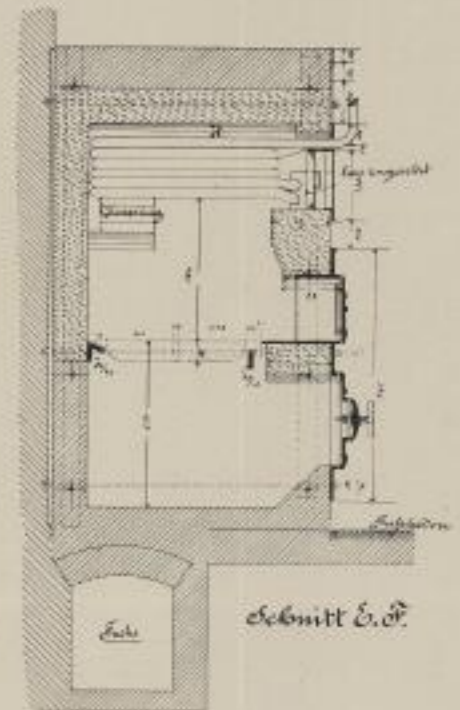
Vorderansicht.



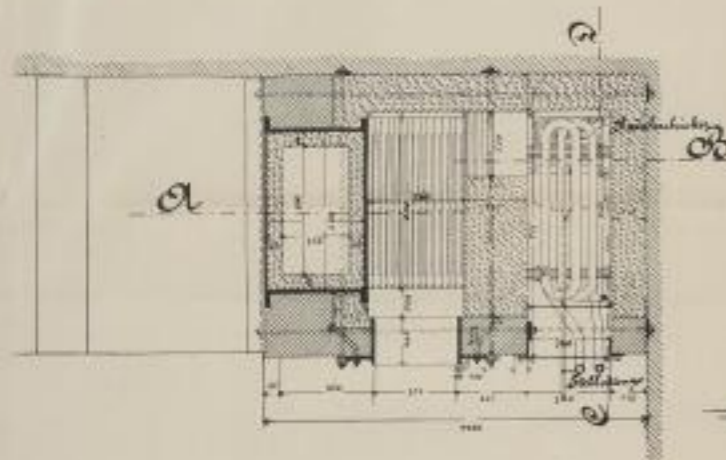
Seitenansicht.



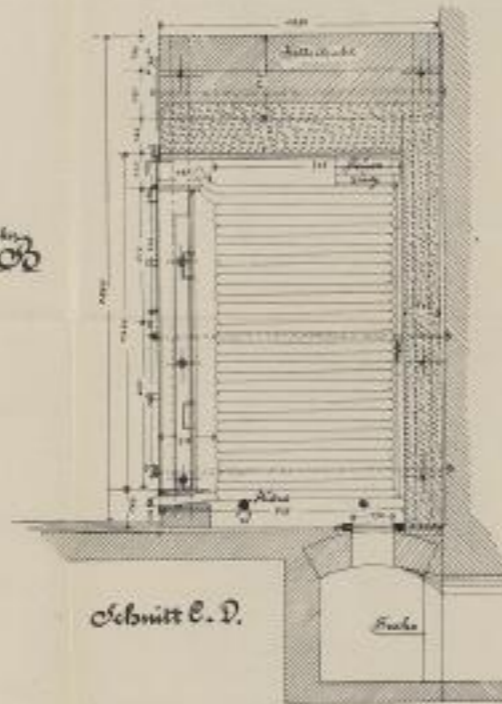
Schnitt A.B.



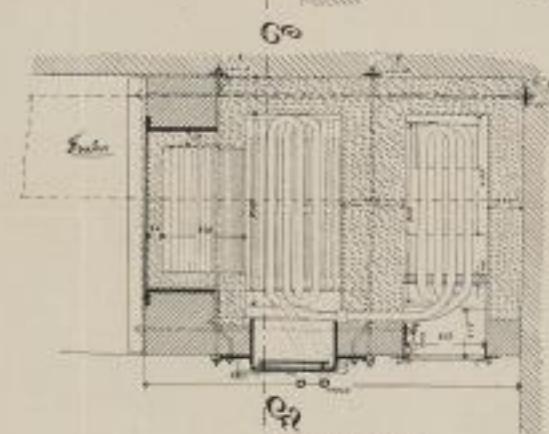
Schnitt C.D.



Schnitt E.F.

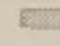



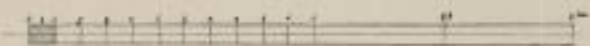
Schnitt G.H.



Schnitt I.J.

Heisswasserofen mit vereiniger Planrost- und Füllfeuerung für Gascokebetrieb.

-  Sandsteinneumant
-  Eisenblech
-  Eisenblech



Zeich. von E. Oslender in Wien.