

*Seilbahn  
auf den Leopoldsberg.*

*Wiener Ausstellung  
1873.*

74.  
~~78~~  
H. G.

B.  
179.

Technische Universität  
Chemnitz  
Universitätsbibliothek

WA 0178-12



1874

1874

von Lohndörfer (25)















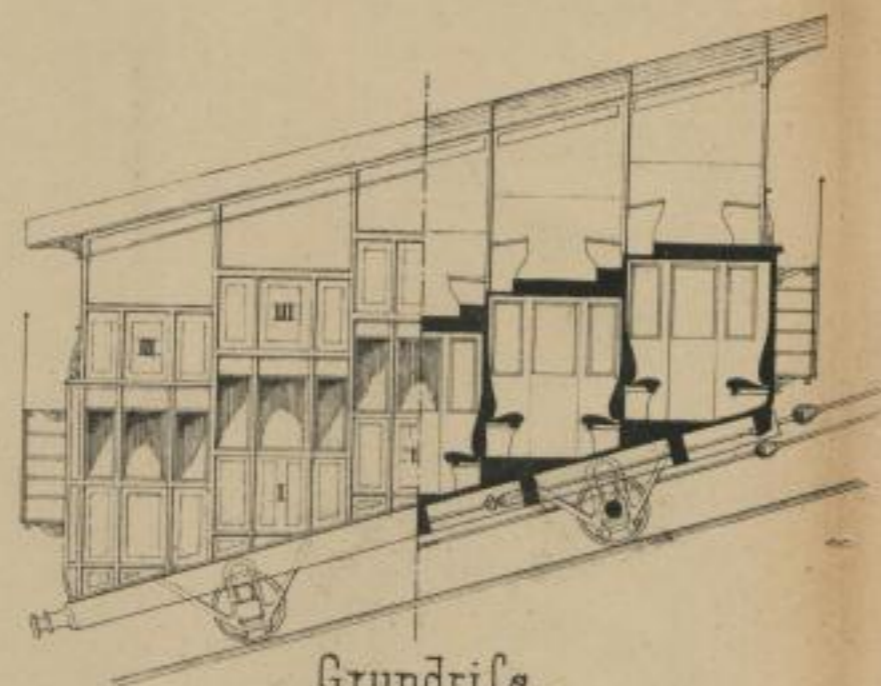
Seilbahn auf den Leopoldsberg.  
Waggon für 100 Personen.



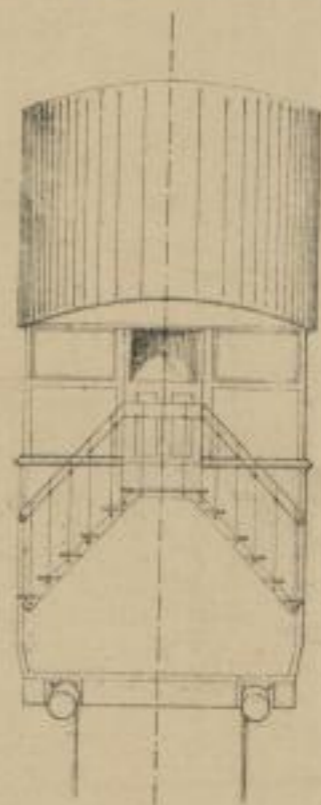
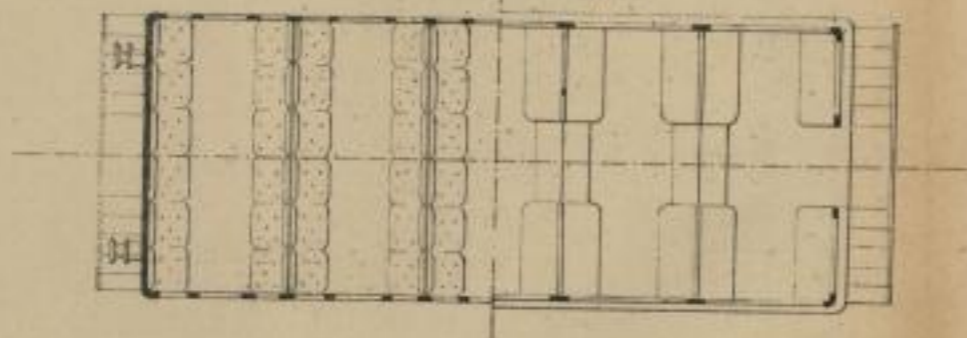
Ansicht

Schnitt

Endansicht.



Grundriss.



Die Direction der  
Union-Baugesellschaft.

*Two handwritten signatures in cursive script, one larger and more prominent than the other.*

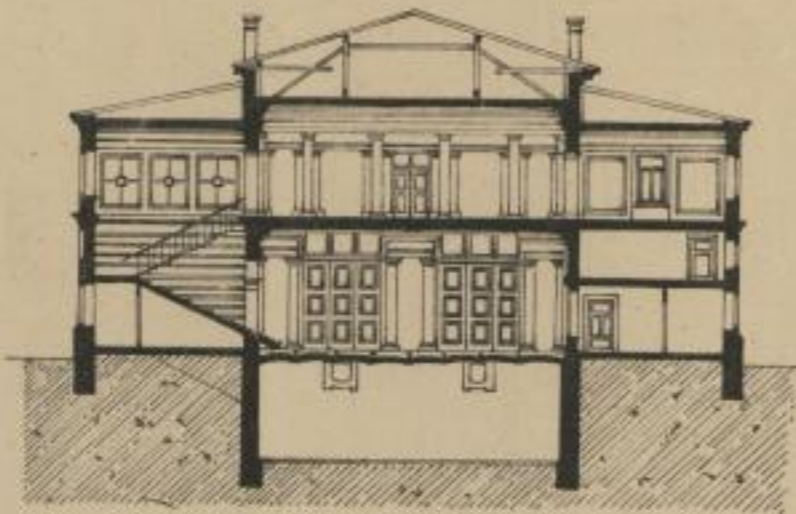




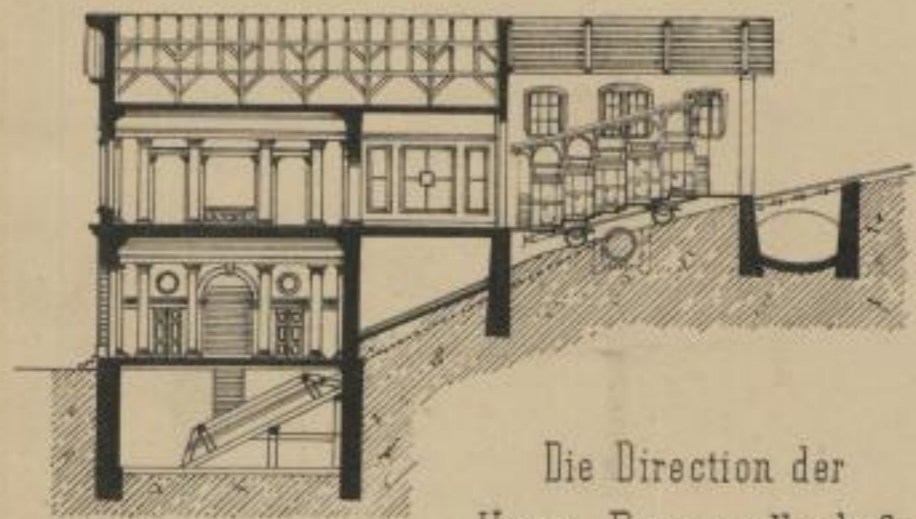
Seilbahn auf den Leopoldsberg.  
Untere Station.



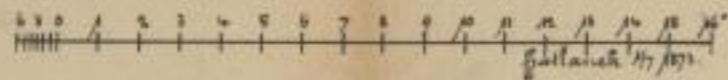
Querschnitt.



Längenschnitt.



Die Direction der  
Union-Baugesellschaft.



*Heinrich Haib*  
*Lin*

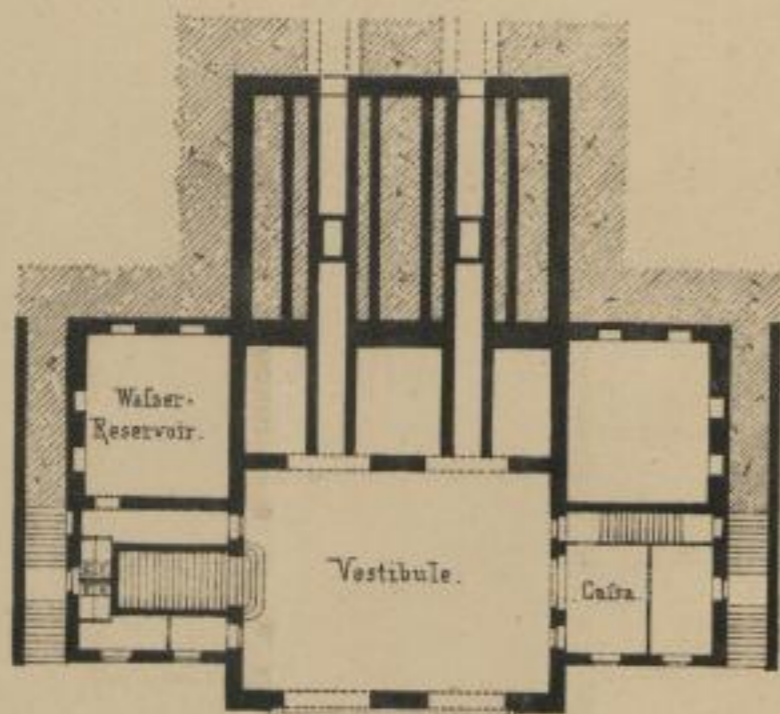




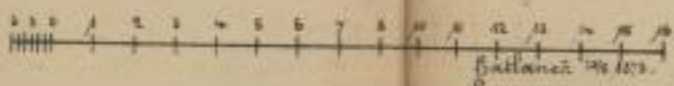
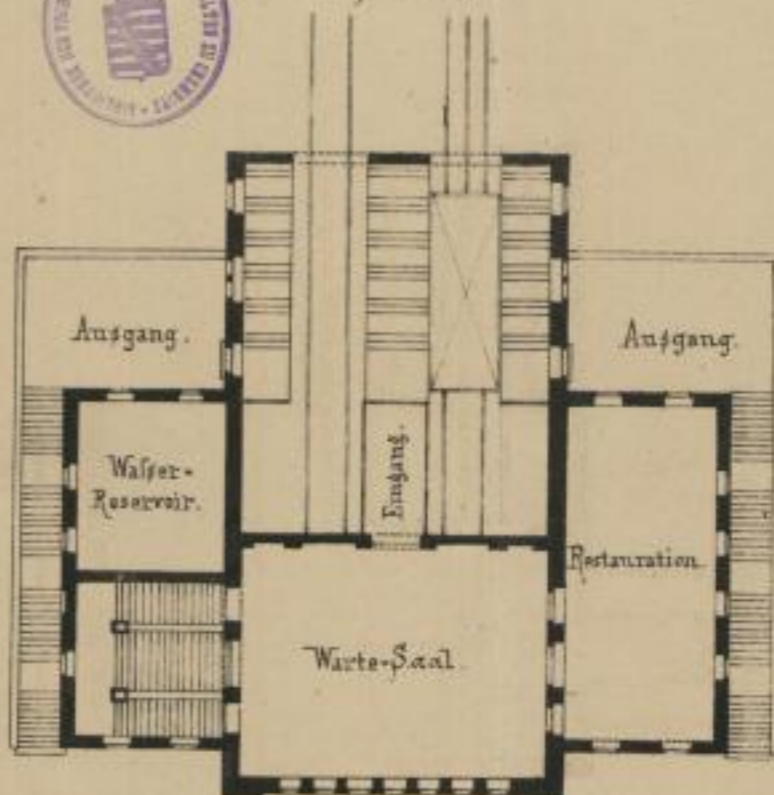


Seilbahn auf d. Leopoldsberg.  
Untere Station.

Parterre.



I. Stock.



Die Direction der  
Union Baugesellschaft.

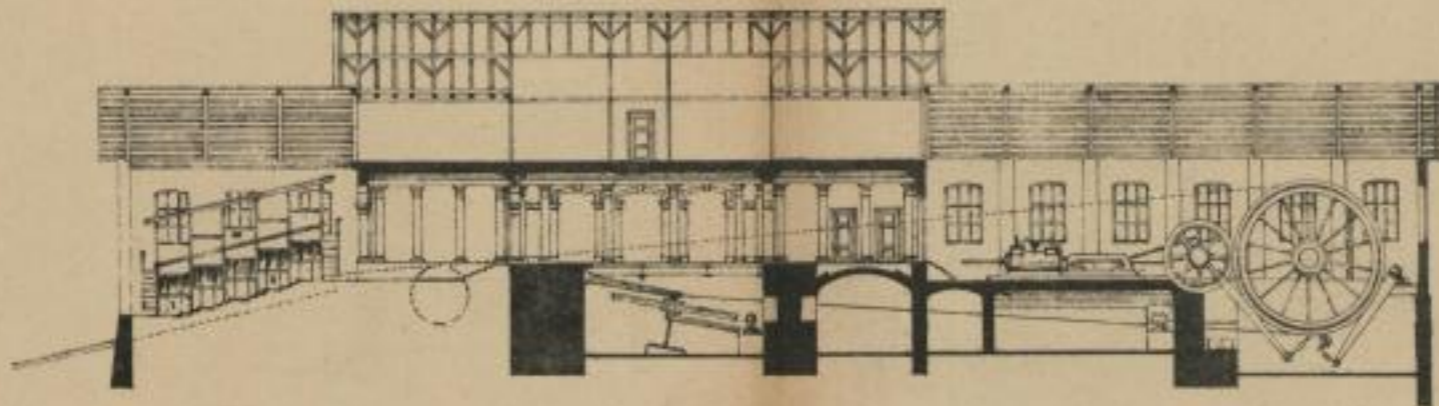
*him Hails*  
*Se*



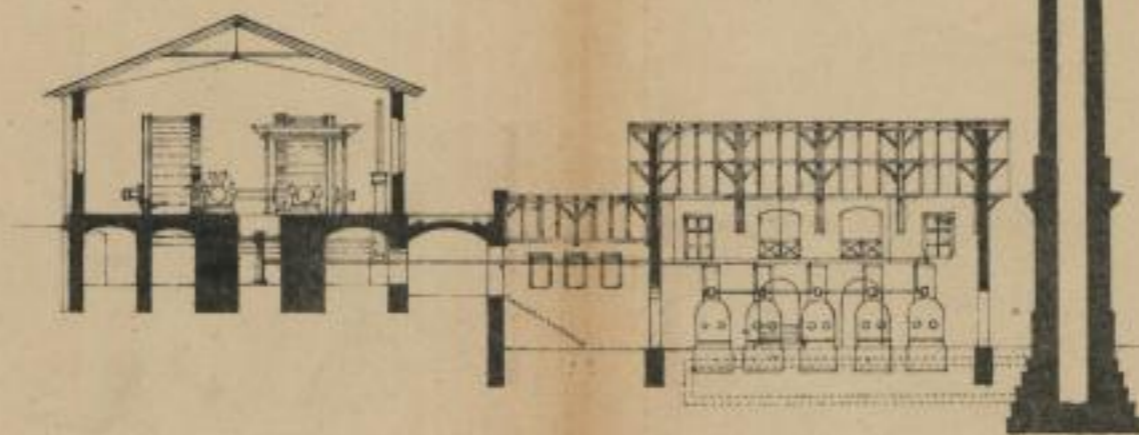


Seilbahn auf den Leopoldsberg.  
Obere Station

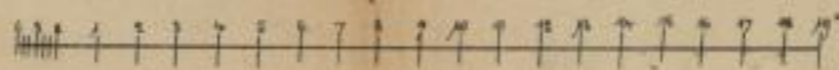
Längenschnitt.



Schnitt durch Maschinen- & Kesselhaus.



Die Direction der  
Union-Baugesellschaft.



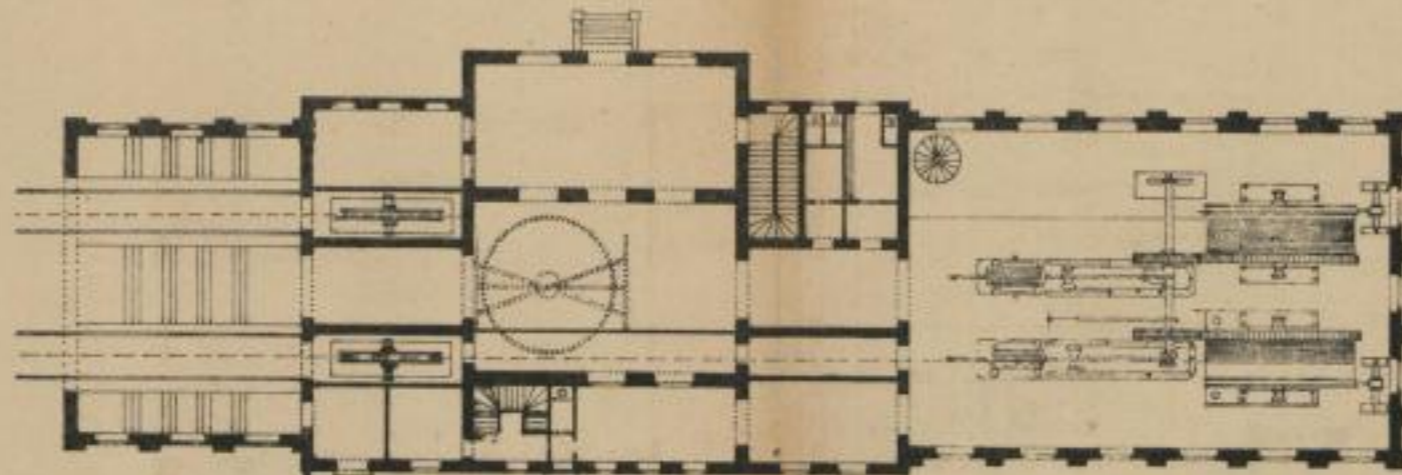
*Handwritten signatures and initials, including 'H. H. H.' and 'S. H.'.*



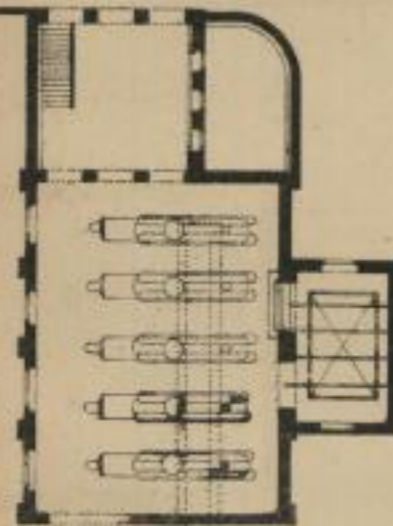
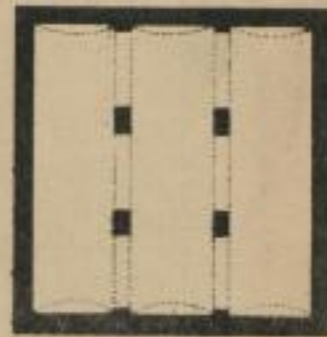


Seilbahn auf den Leopoldsberg  
Obere Station

Grundriss.

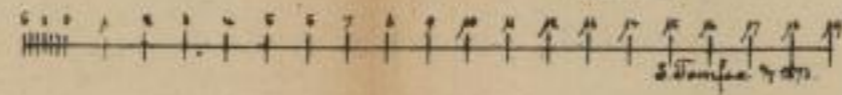


Wasserreservoir



Kesselhaus

Die Direction der  
Union-Baugesellschaft.

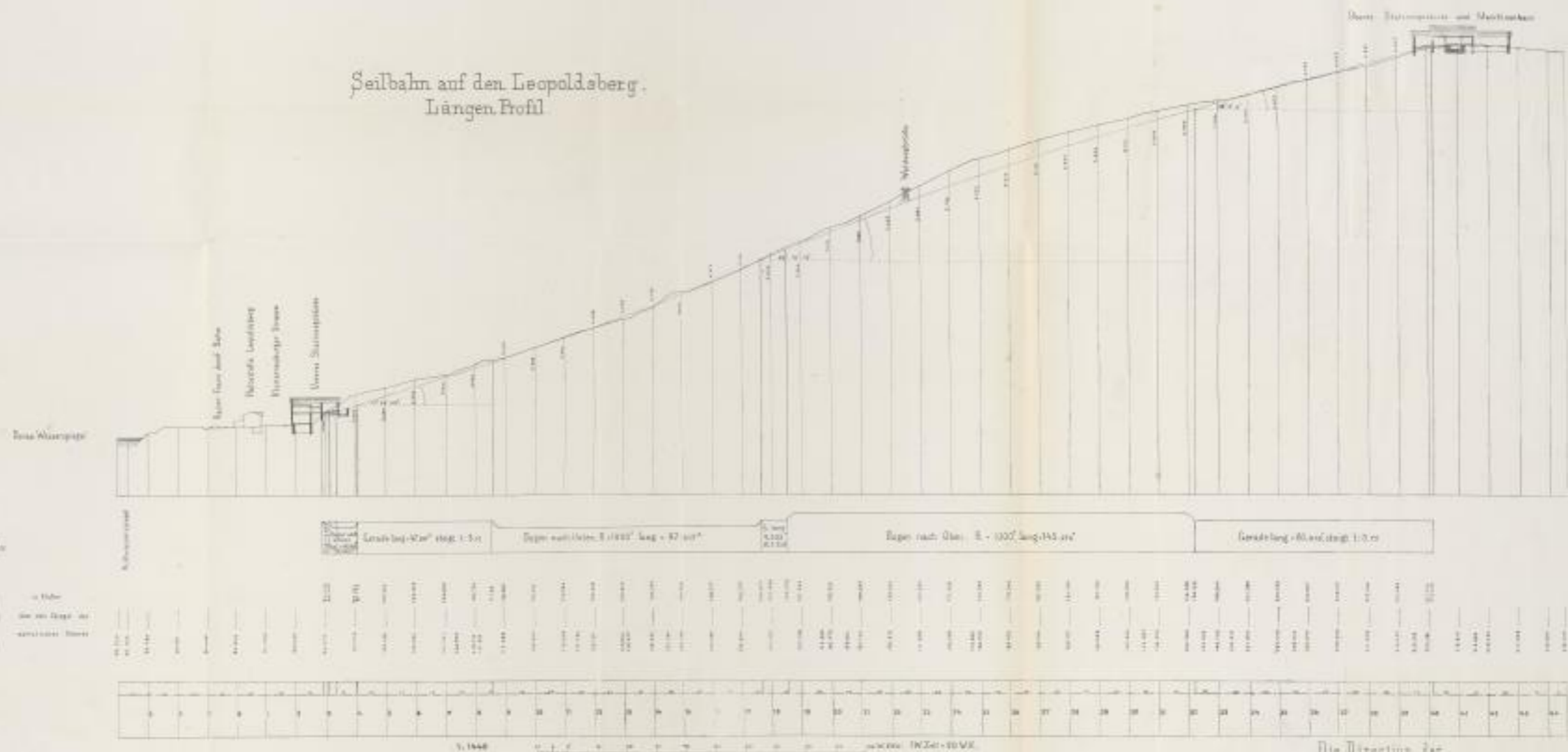


*Handwritten signatures and initials.*





# Seilbahn auf den Leopoldenberg. Längenprofil



Die Direction der  
Unia-Baugesellschaft.

*[Handwritten signatures]*











Small white label with illegible text.