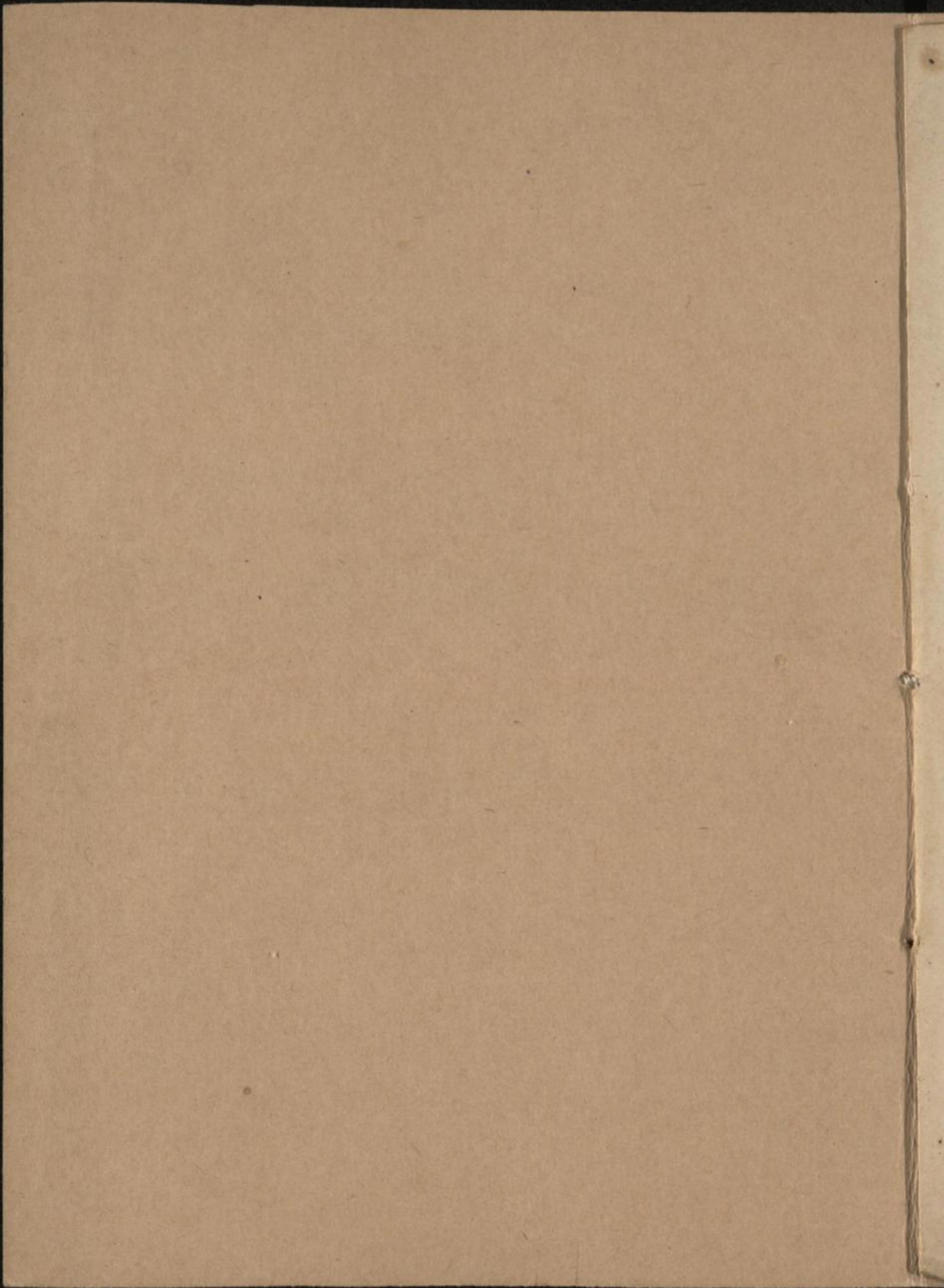


26/8°

2534







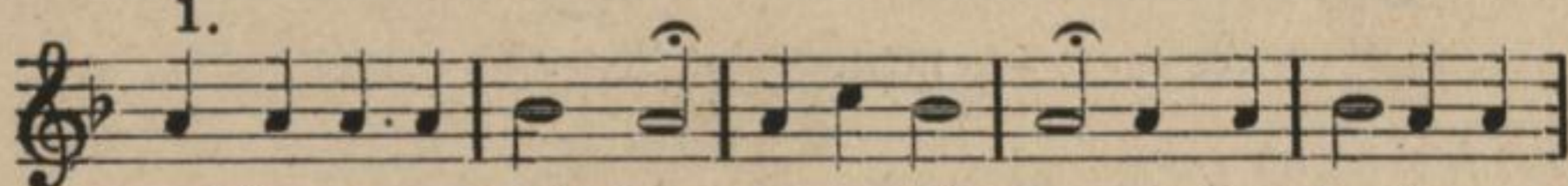




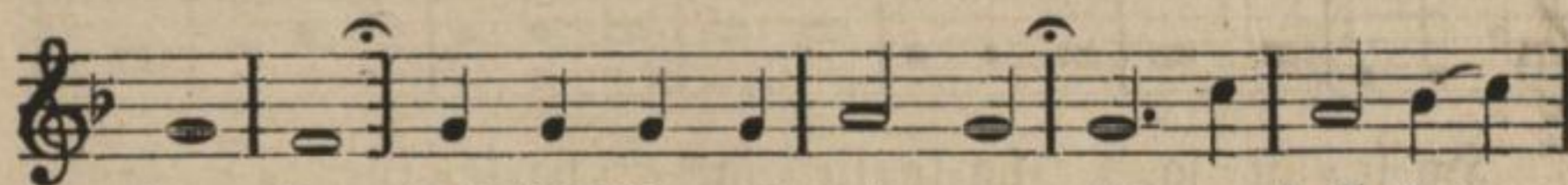
20/8° 534

## Spiwanje pschi liturgiji.

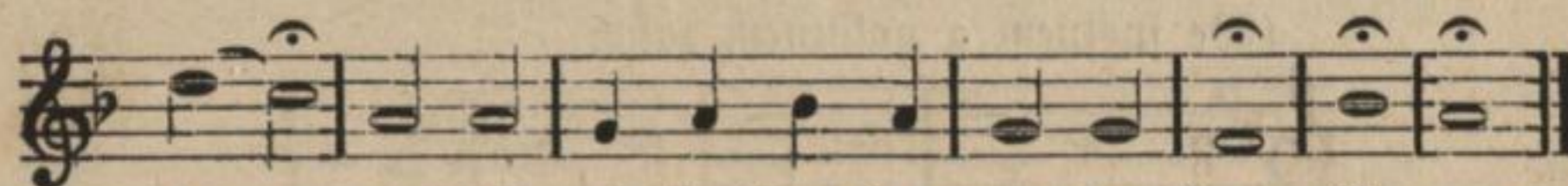
1.



Zesć bu=ži tom Wóschzu, a tom Ssynu a tom śwětemu

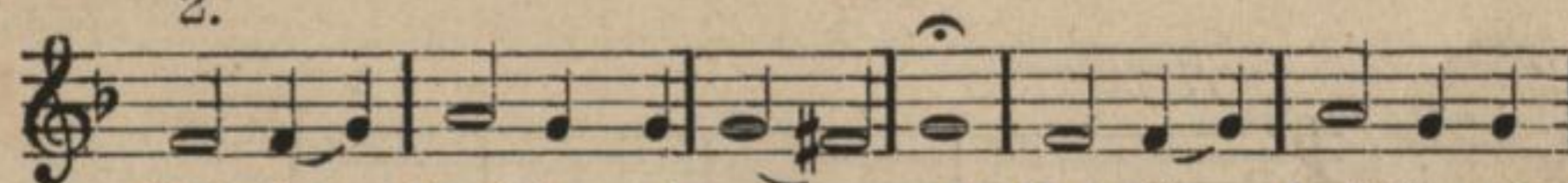


du=chu; kaž bě=schowót ně=ga, nět a hob=staw=

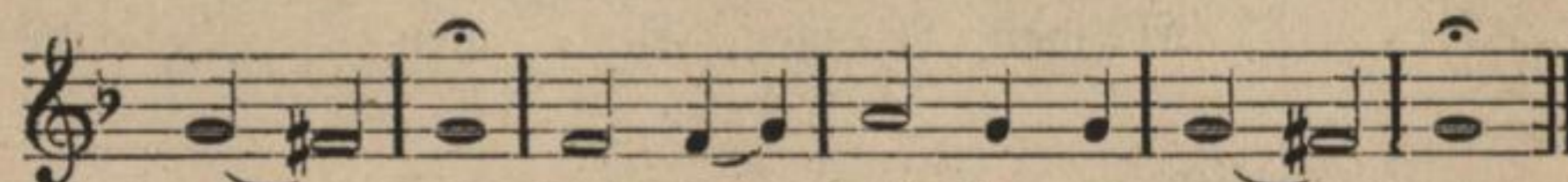


ne, a wót ni=merstwa do ni=mer=stwa. A=men.

2.

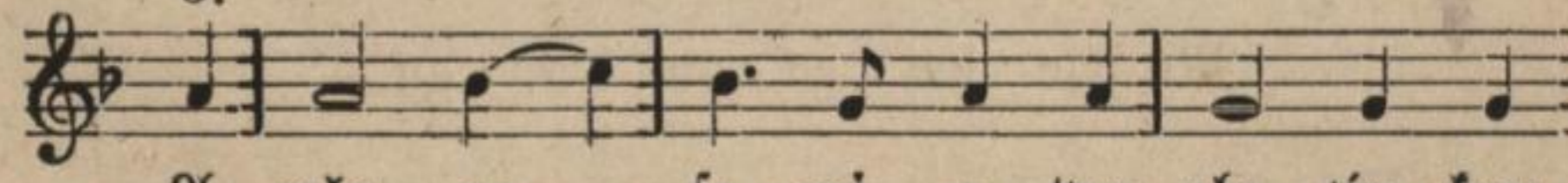


Kně=žo, smil se nad na=mi. Kri=ste, smil se nad

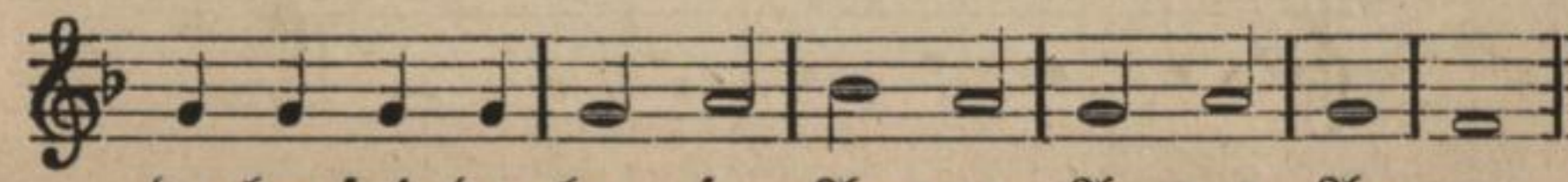


na=mi. Kně=žo, smil se nad na=mi.

3.

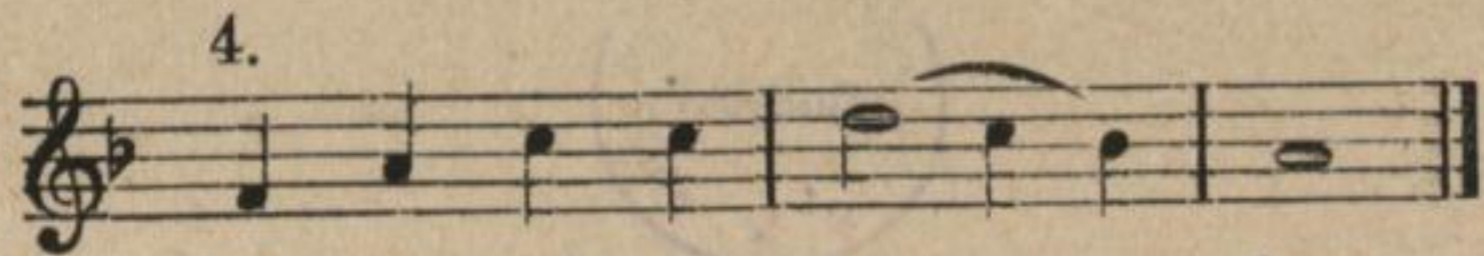


A měr na=se=mi a tym zło=we=fam



do=bre spó=do=ba=ne. A=men, A=men, A=men.





A tež stwó=jim du = = chom.



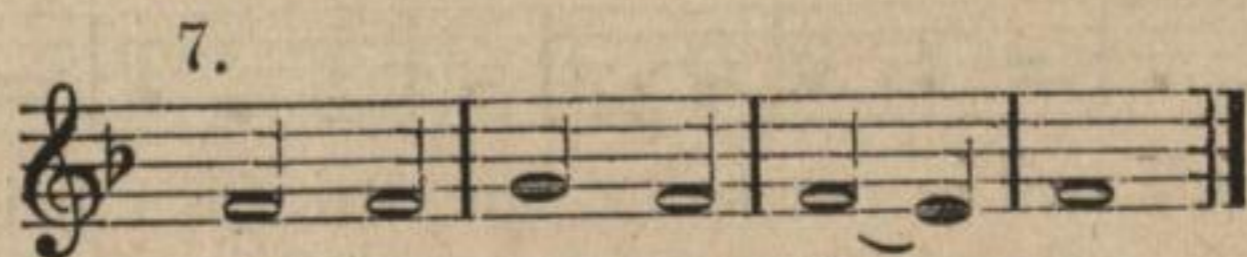
A = = men. A = = men.



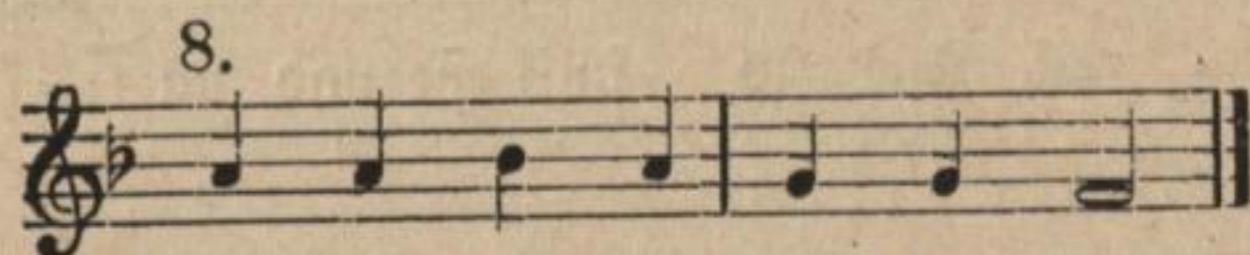
Ha-le=lu=ja, ha-le=lu=ja, ha-le=lu = ja.



A=men, A=men, A = men.



A=men, A=men, A = men.



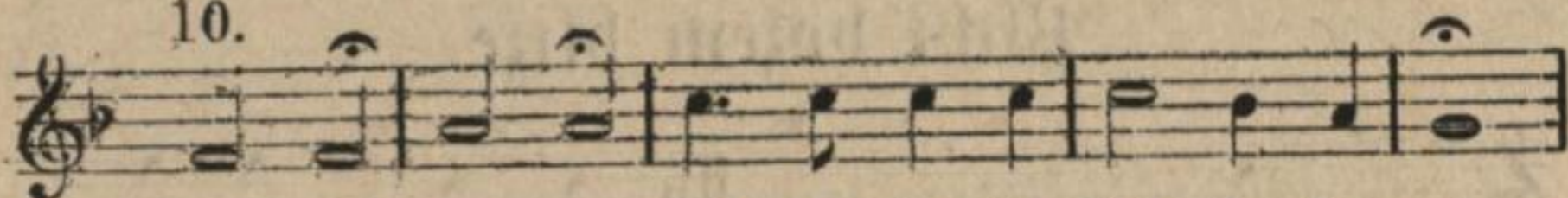
My je swi = ga = my t Bo = gu.



Břcha=we jo a do stoj = ne.



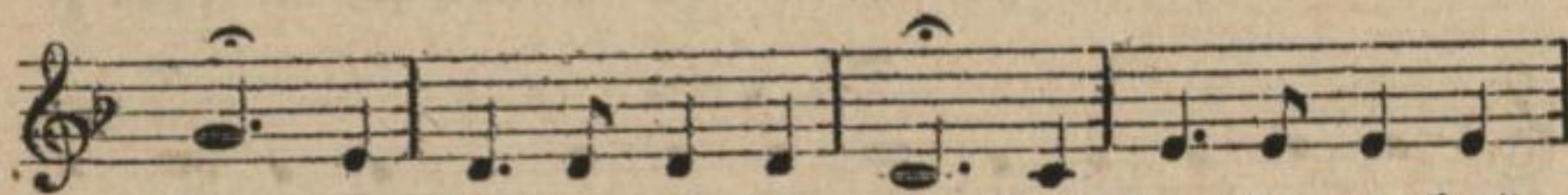
10.



Šn-ě = ty, ěwě = ty, ěwě = ty jo ten Kněš Ze = ba = ot.



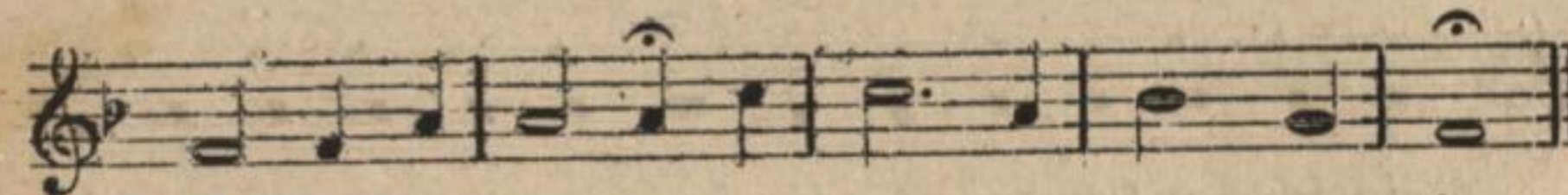
Wschy = tne kra = je jog ze = sczi poł = ne ěu. Ho = sia =



na, ho = sia = na w hušchy = nie. Buž chwa = lo = ny, kenz

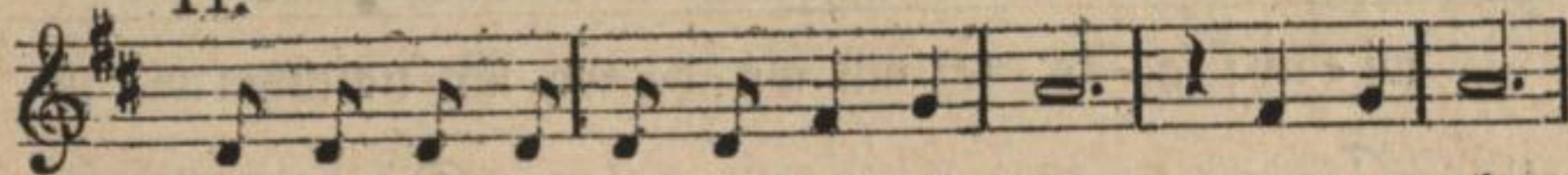


pschi = zo we nie = nu to = go Kně = sa. Ho =

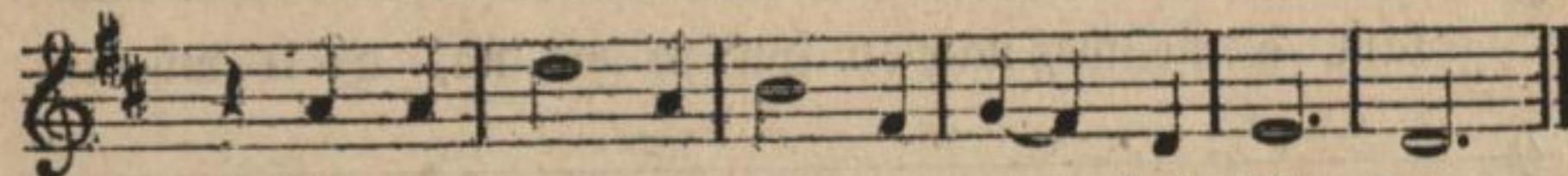


sia = na, ho = sia = na, ho = sia = na w hu = schy = nie.

11.



Wšche = to Twó = jo jo to kra = lej = štwo, a ta móž



a ta zescž do ni = mer = no = sczi. A = men.

12.

(Spótny a połutny zaš:)



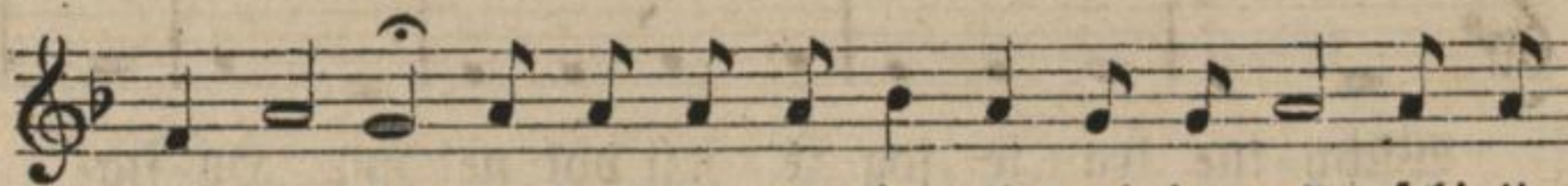
A = men, A = men, A = men. Amen, Amen, A = men.



## Wšchi božem bliže.



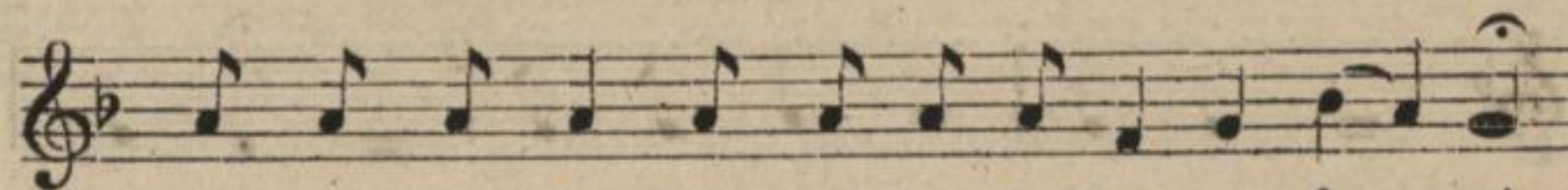
Mo = dli = my še k Bo = gu: Wšch = ze naš, tenž ty šy



na ně = bju, hu = šwěšcho = ne bu = ži twó = jo mě; pšchi = ži



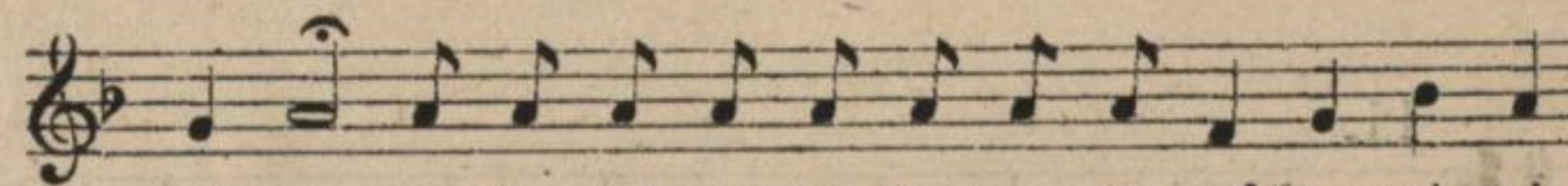
k nam Twójo kra = lej = stwo; Twója wó = la še šta = ni, a



ko tam na ně = bju tak te = ke how na se = ni;



Nasch schedny klěb dai nam žin = ša, a wó = dai nam na = sche



wi = ny; a = ko tež my wó = da = wa = my naschym wi = ni =



šam, a ně = wěž naš do spy = to = wa = na, a = le wy = mož

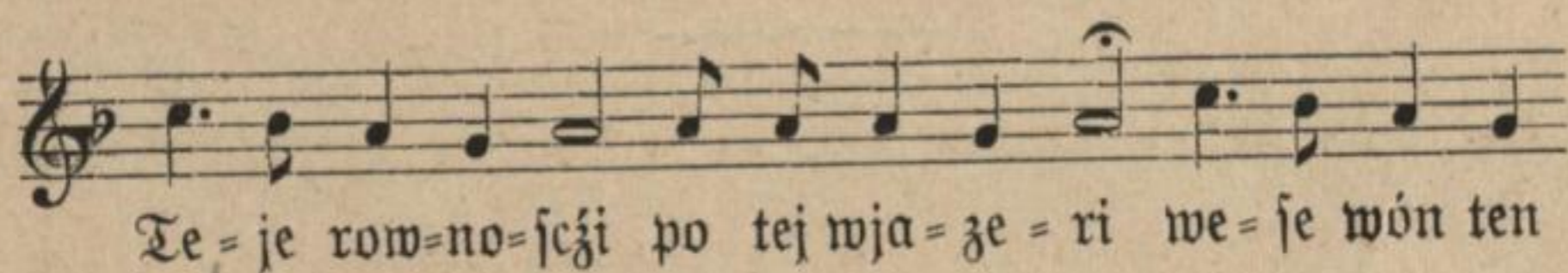
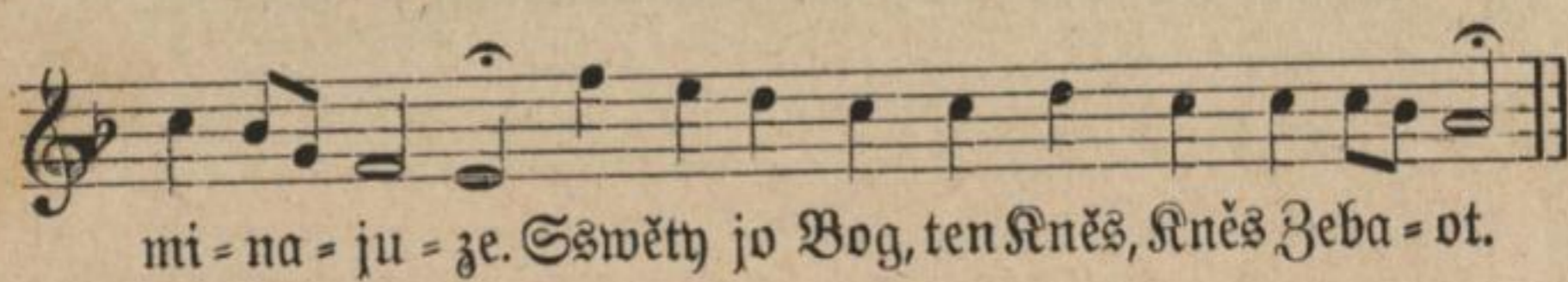
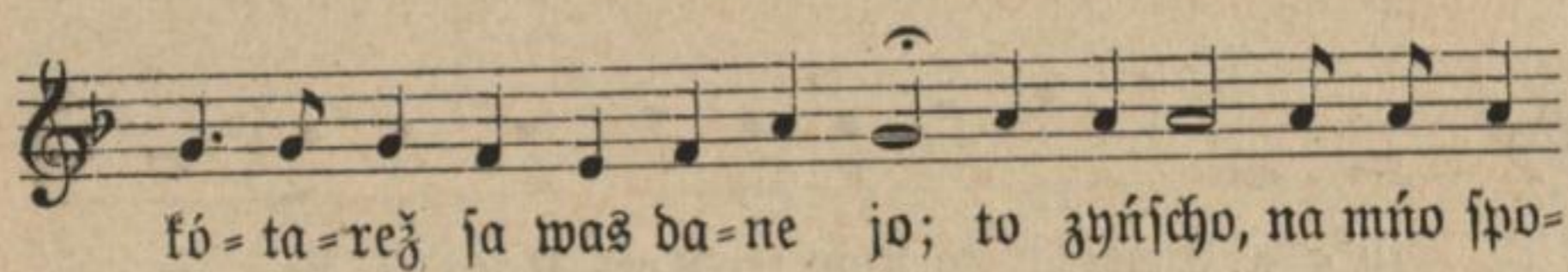
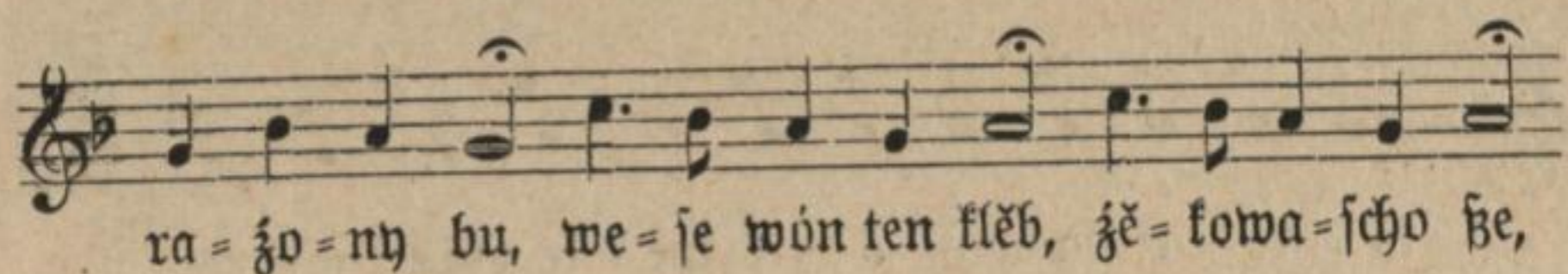


naš wót to = go šte = go. A = = mén.

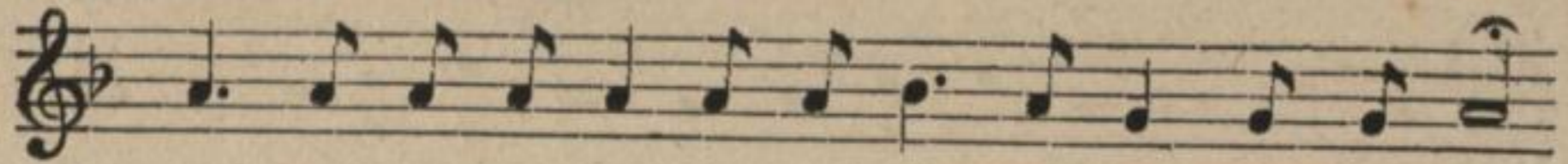


Nasch Kněz Je = suš Kri = stuš we tej no = zy a ko wón pšche =





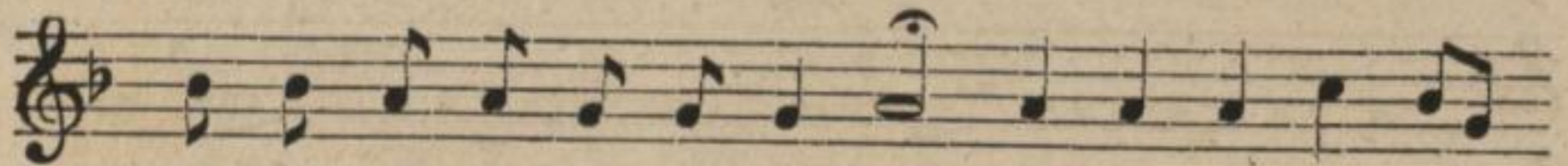




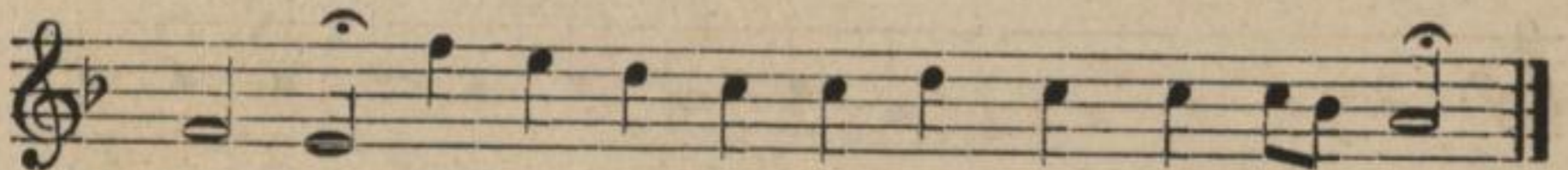
fó = ta = raž sa waß a jich wě = le psche = la = ta jo



ě wó = da = wa = nu tych grěchow; ta = fe zyhń = scho tať ze = sto



a = fo wy jen bu = žo = scho pišch, na mńo spo = mi = na =



ju = ze. Sřwěty jo Bog, ten Kněš, Kněš Ze = ba = ot.









