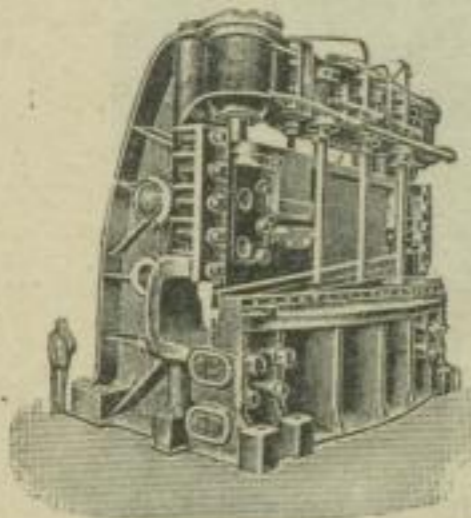


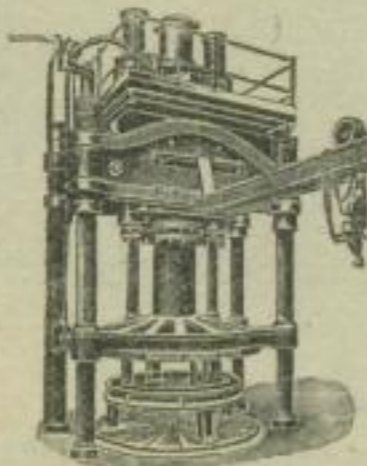
KALKER WERKZEUGMASCHINEN-FABRIK

Breuer, Schumacher & Co KALK-KÖLN

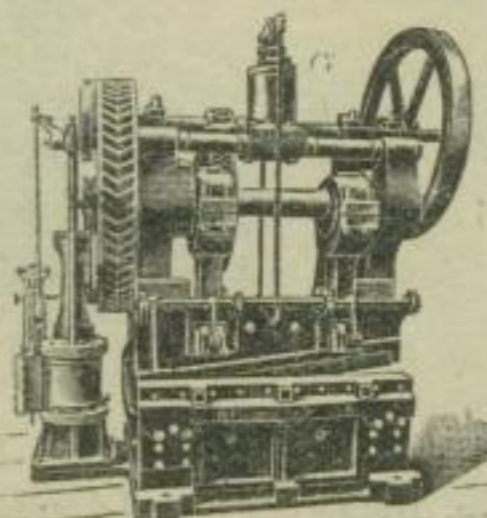
Schwere Werkzeugmaschinen, Hüttenwerksmaschinen, Komplexe Stahl- und Walzwerksanlagen, hydraulische Maschinen und Apparate.



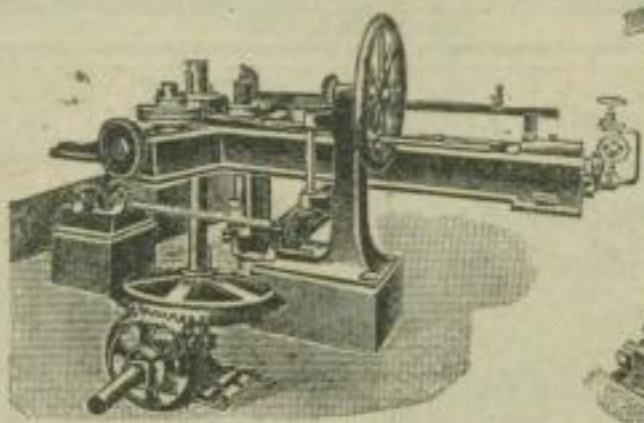
Hydraulische Blechschere für Bleche bis 50 mm Stärke u. 4500 mm Breite



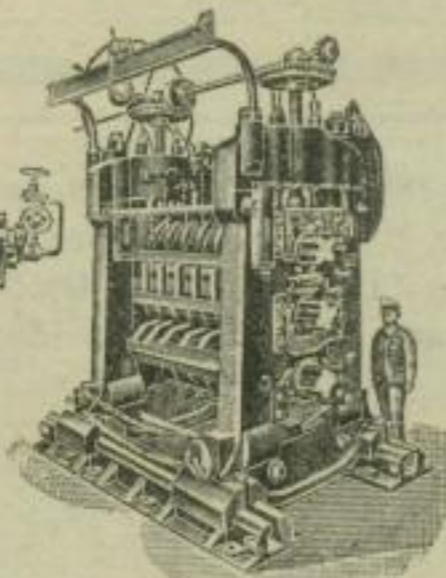
Hydr. Kumpelpresse.



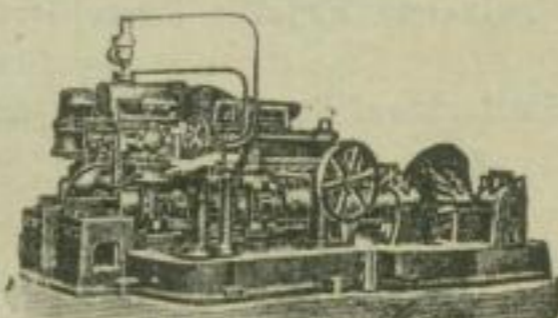
Blechschere mit Dampfmaschine.



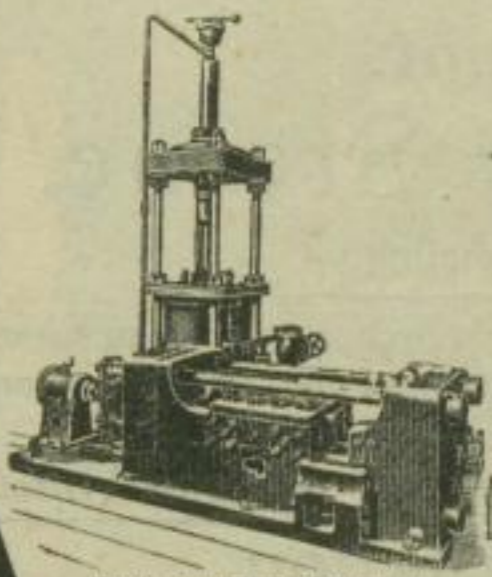
Bandagenwalzwerk.



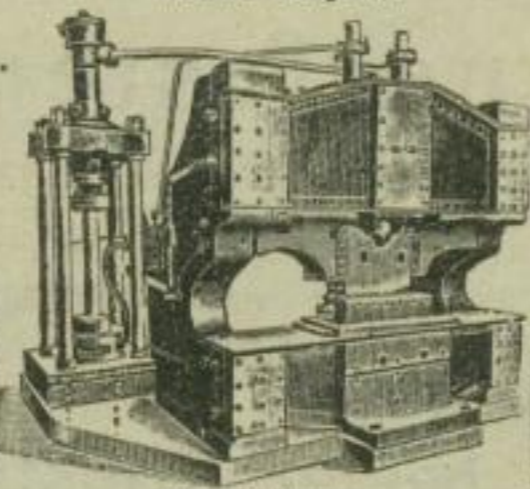
Plattinen-Walzgerüst.



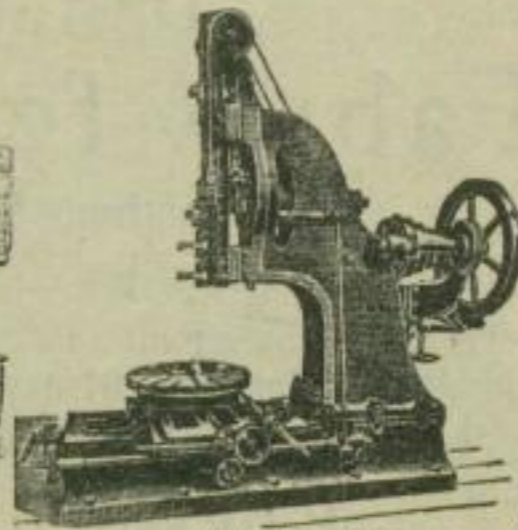
Schleifenraderwalzwerk.



Horiz. dampfhydr. Blechschere



Hydr. Blechschere



Nutstößmaschine.
2723

