

K.S.Akademie

8°

-

1156

HfBK Dresden



SLUB

Wir führen Wissen.

1156.

Dieses Buch
ist zurückzugeben
bis zum:

Buch
Nr. A 847

20 07. 73

Bestell-Nr. 20

L 1217/60 V 5/20



SLUB

Wir führen Wissen.



HfBK Dresden - Bibliothek



00628209



Segmann, Carl:
Handbuch der Bildnerkunst...

Atlas,
enth. 28 Quarkapeln.

Heimar 1864.



SLUB

Wir führen Wissen.



~~P 060~~

~~K 103~~



~~A 847~~

1156

Fig. 2.

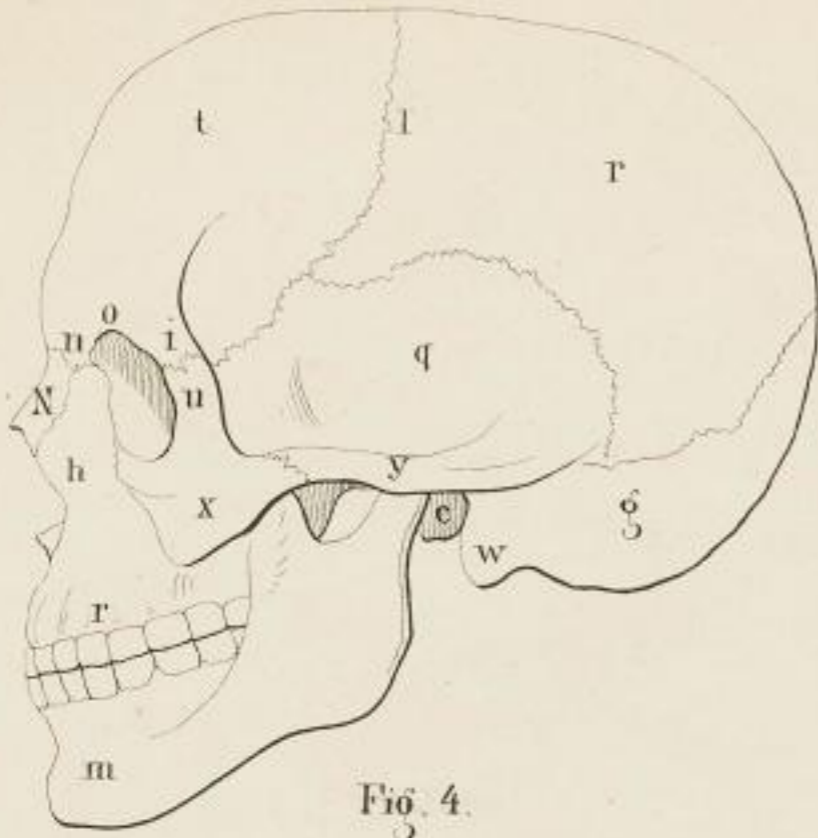


Fig. 3.

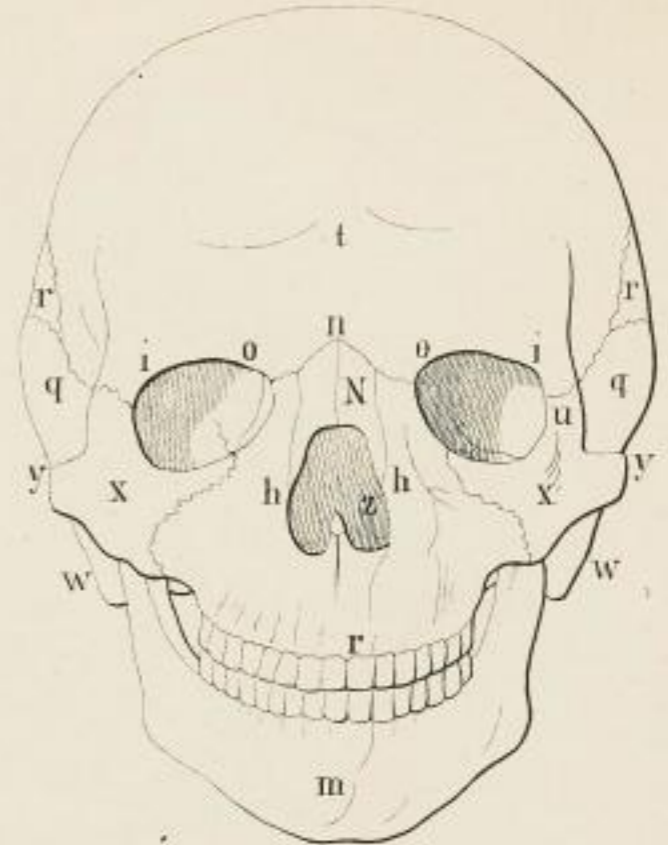


Fig. 1.

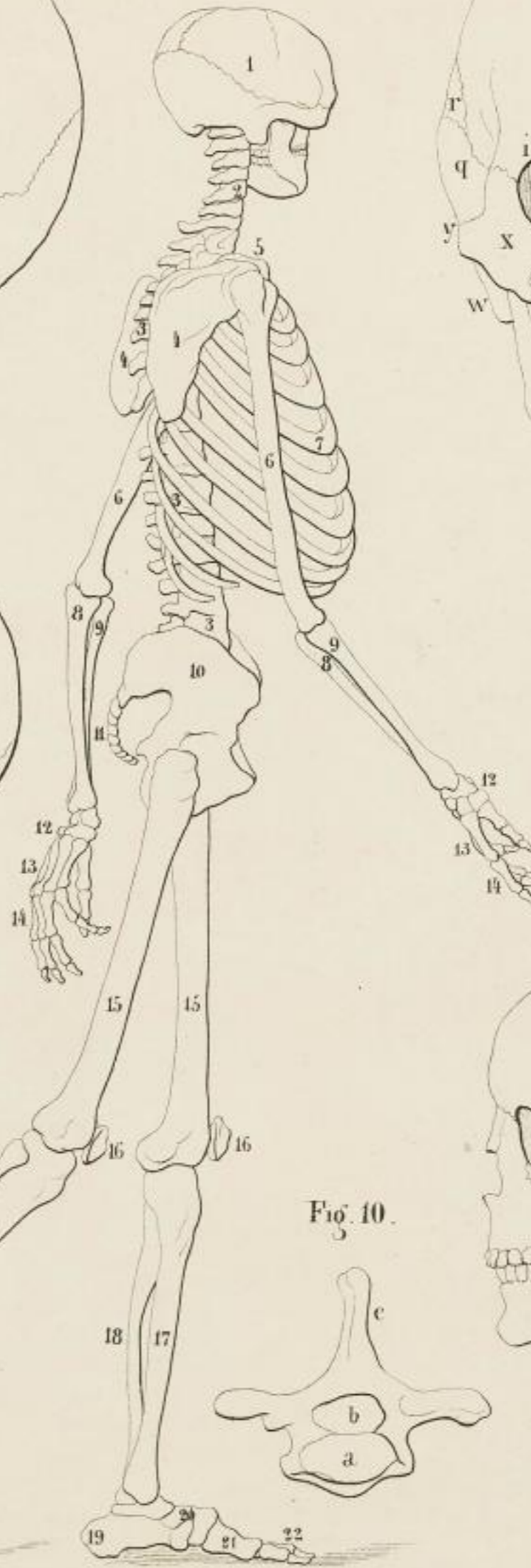


Fig. 4.



Fig. 6.

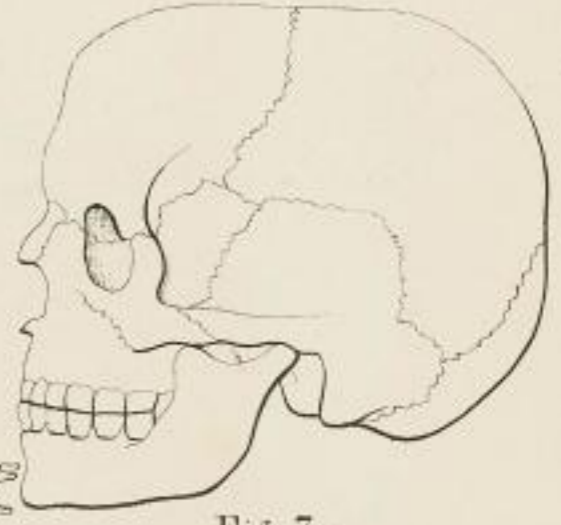


Fig. 5.



Fig. 7.

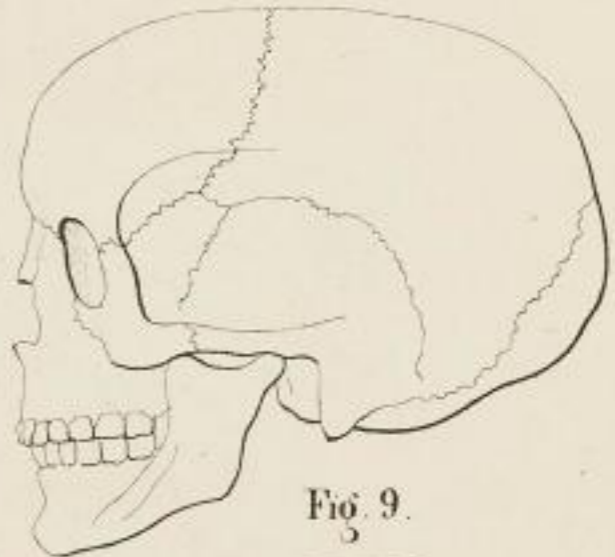


Fig. 8.



Fig. 10.

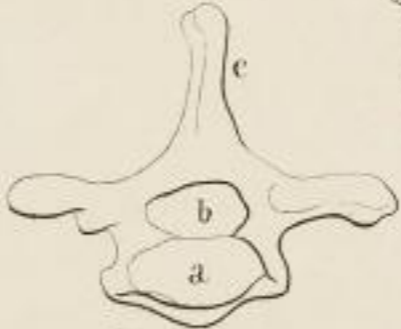
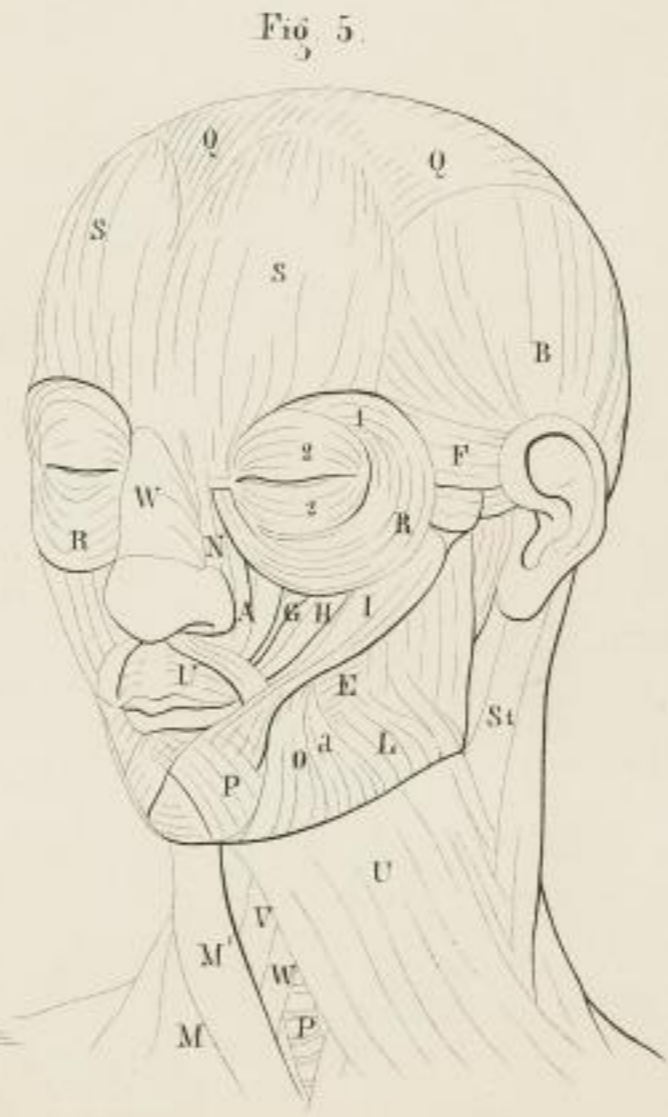


Fig. 9.



11. 11. 1871





1787

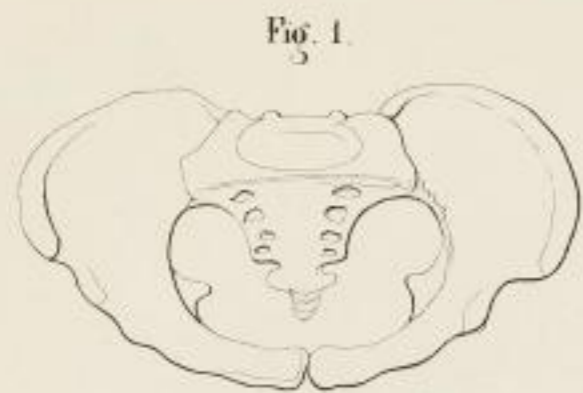


Fig. 1.



Fig. 4.



Fig. 3.



Fig. 5.

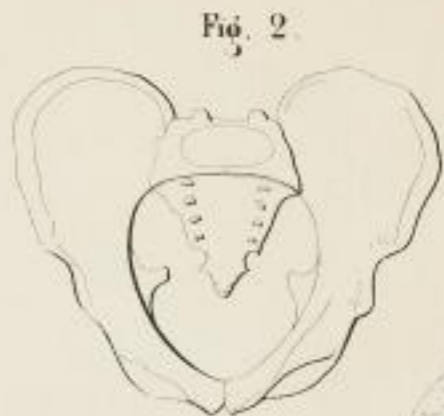


Fig. 2.

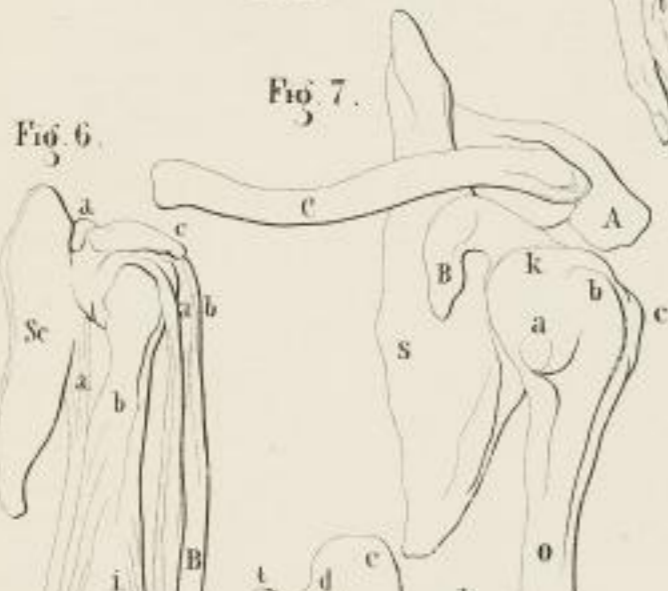


Fig. 6.

Fig. 7.

Fig. 8.

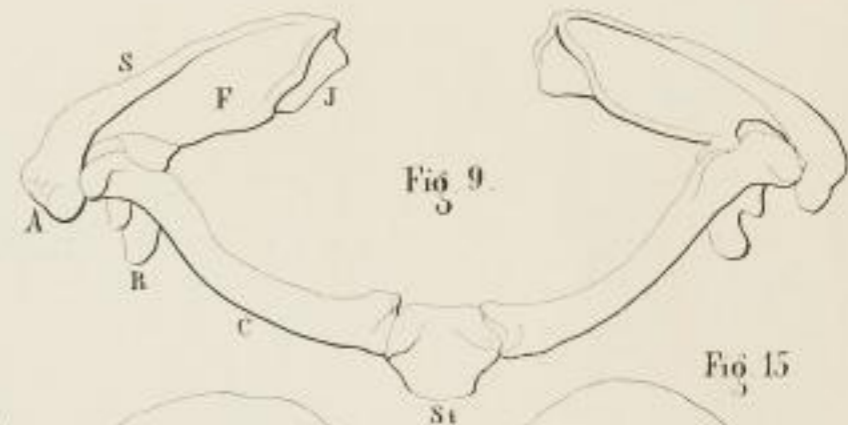


Fig. 9.

Fig. 15.

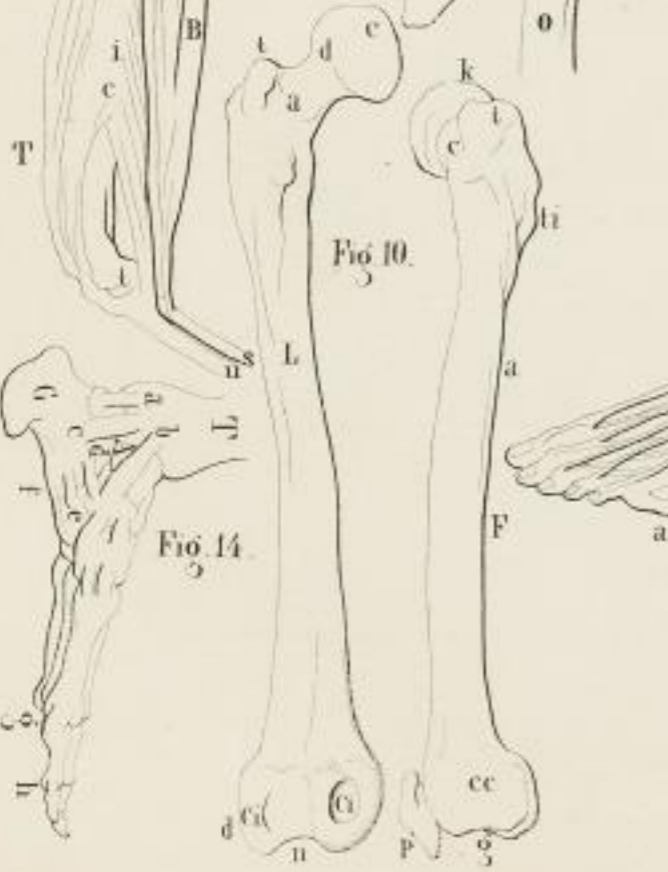


Fig. 10.

Fig. 11.

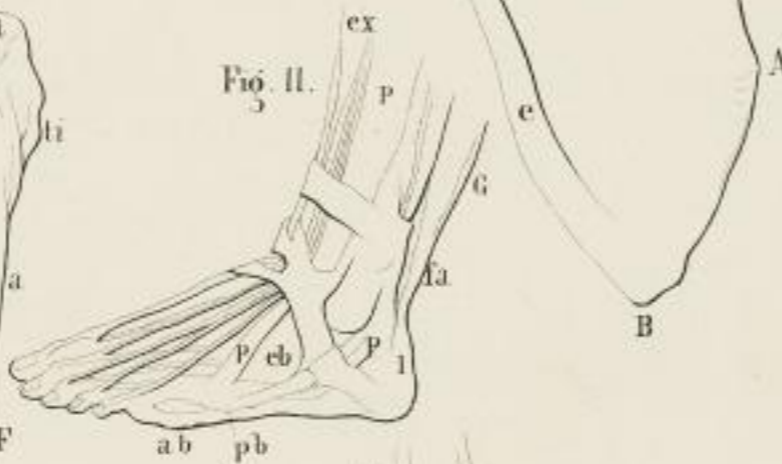


Fig. 12.



Fig. 14.

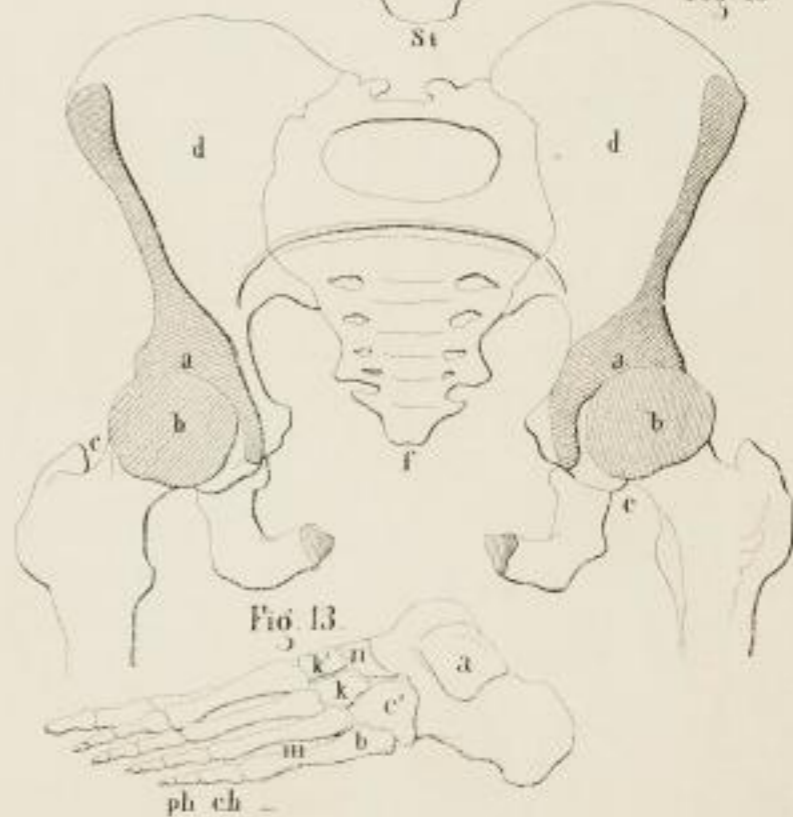


Fig. 13.

1837

1837

1837

1837



SLUB

Wir führen Wissen.



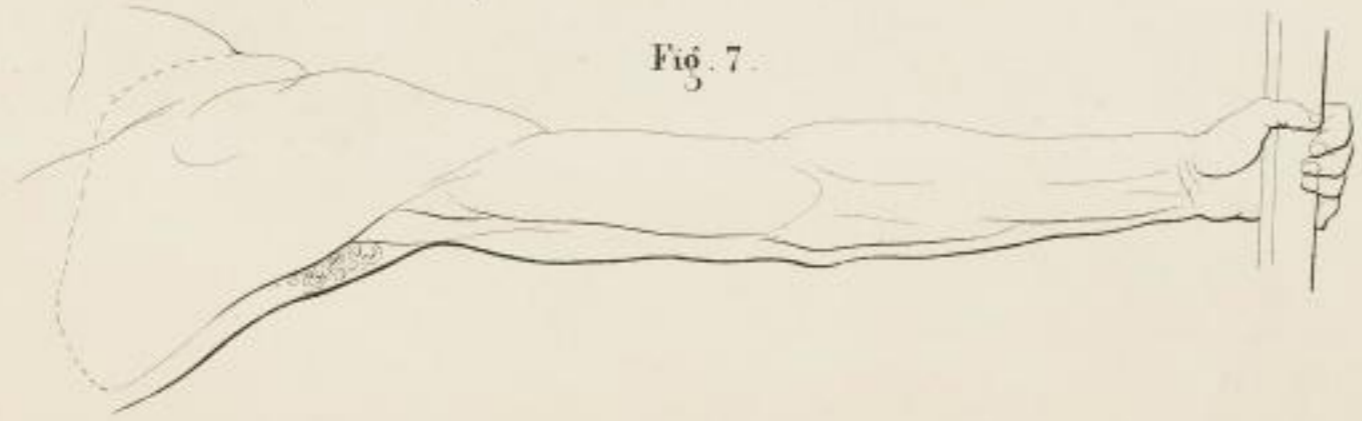
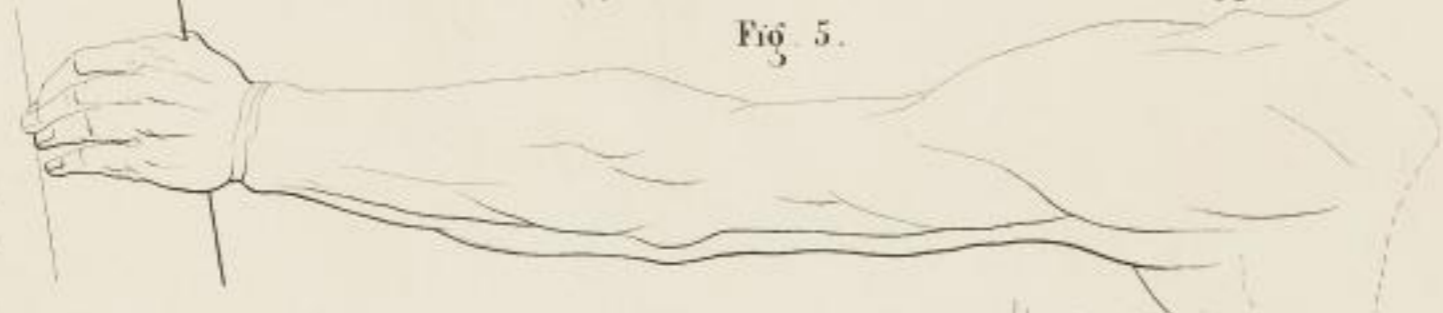
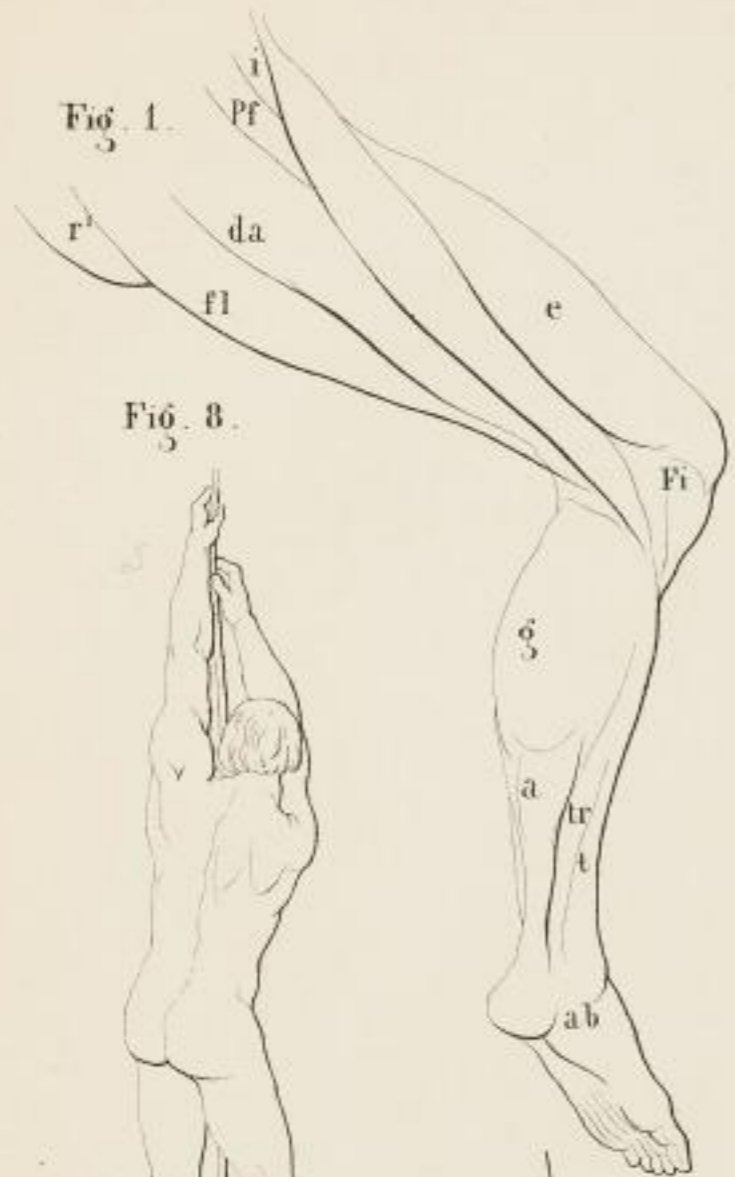


Fig. 6.



1877

1877



Fig. 1.



Fig. 2.



Fig. 3.

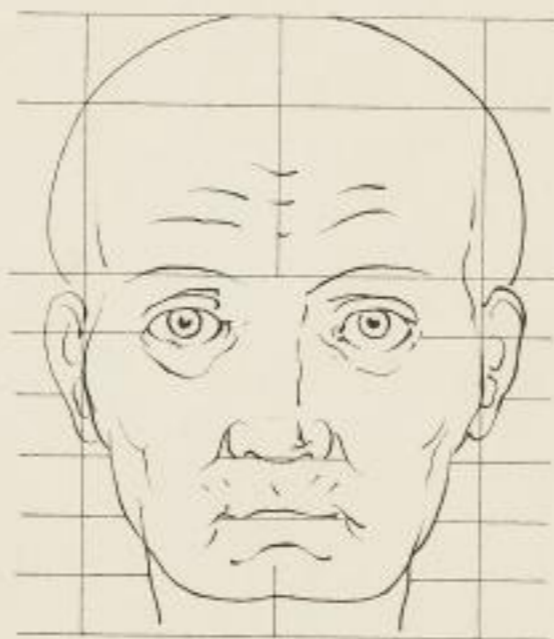


Fig. 4.



Fig. 5.



Fig. 7.



Fig. 8.



Fig. 9.



Fig. 6.



Stegmann-Bilshaver.

SECRET

Fig. 1.

Fig. 2.

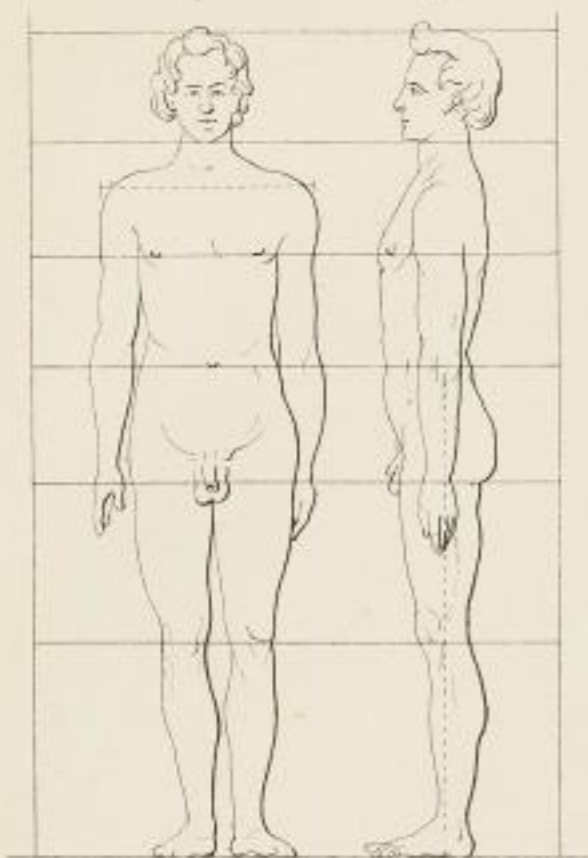


Fig. 5.

Fig. 6.



Fig. 3.

Fig. 4.



Fig. 11.

Fig. 12.

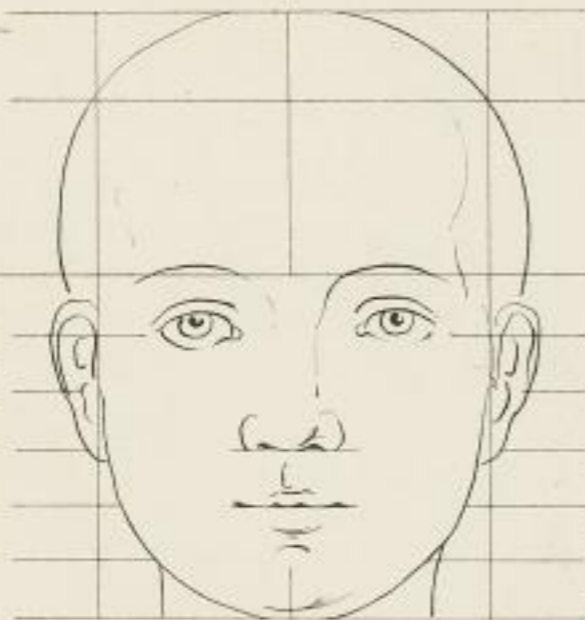
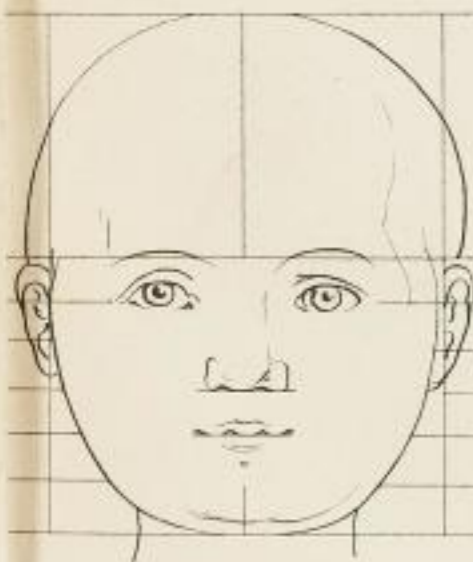


Fig. 7.

Fig. 8.

Fig. 9.

Fig. 10.



IV SAT



SLUB

Wir führen Wissen.



Fig. 1.



Fig. 3.



Fig. 2.



Fig. 7.



Fig. 6.



Fig. 4.



Fig. 5.





SLUB

Wir führen Wissen.



Fig. 5.



Fig. 7.



Fig. 6.



Fig. 8.



1844

Fig. 2.



Fig. 1.

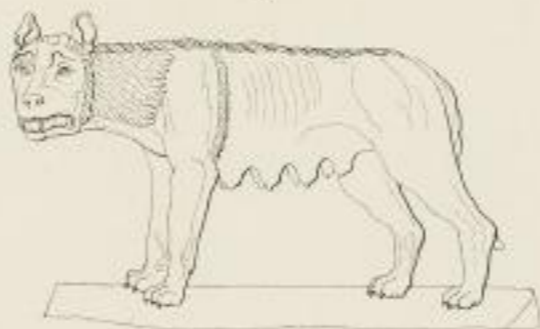


Fig. 3.



Fig. 5.



Fig. 4.



Fig. 6.



Fig. 7.



Fig. 8.



Stegmann Bildhauer.



1887



SLUB

Wir führen Wissen.



Fig. 2.



Fig. 3.

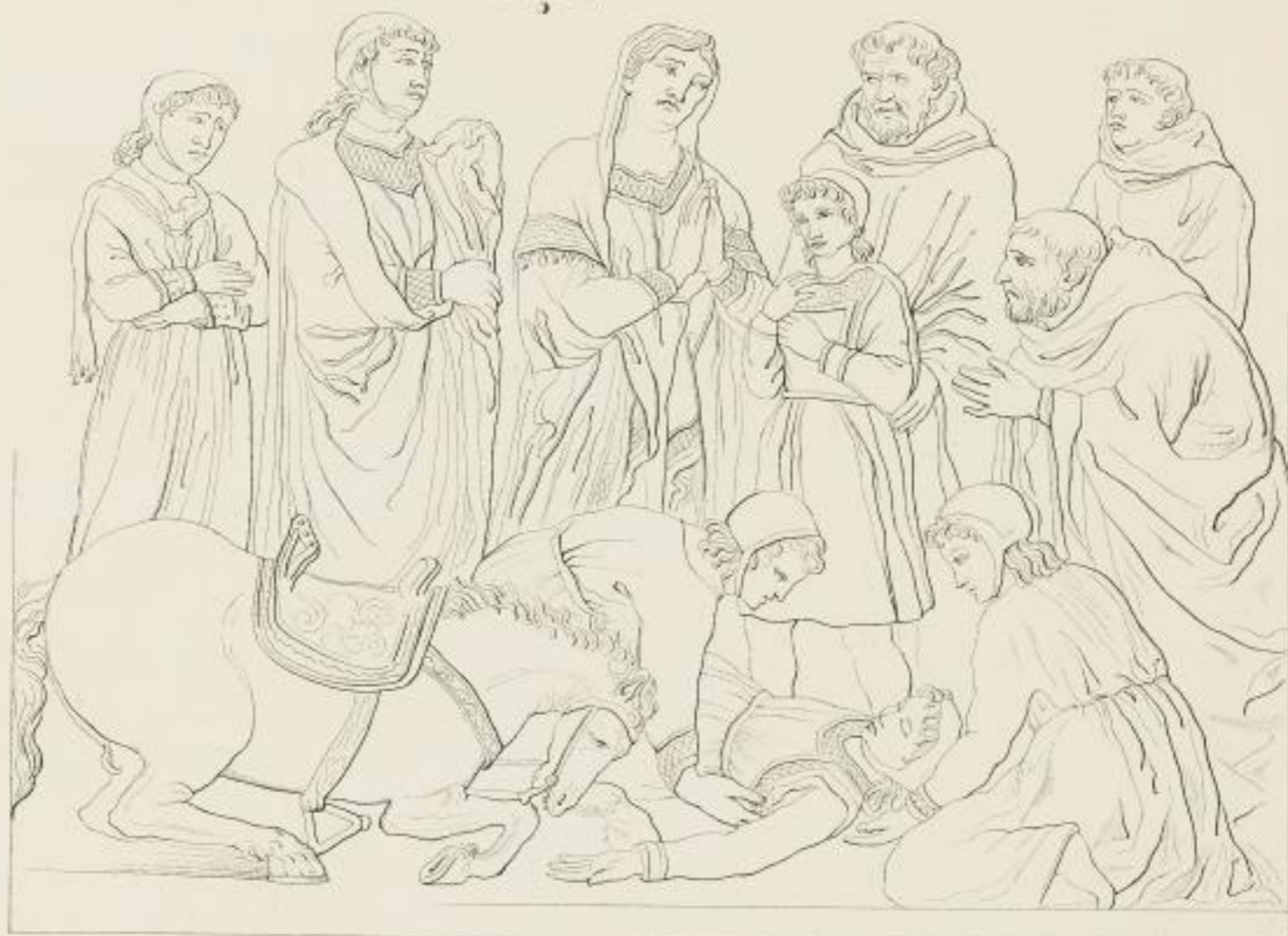


Fig. 4.



Fig. 1.



Fig. 5.



1847
1847

Fig. 1.



Fig. 3.



Fig. 2.



Fig. 5.



Fig. 4.



Fig. 7.

Fig. 6.



1871

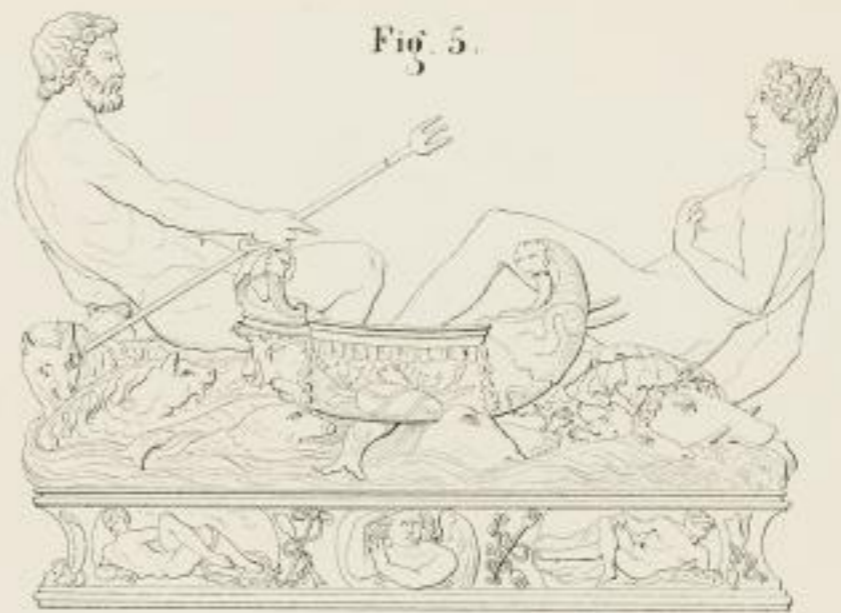


Fig. 1.



Fig. 3.



111, 217



Fig. 1.



Fig. 3.



Fig. 4.



Fig. 5.

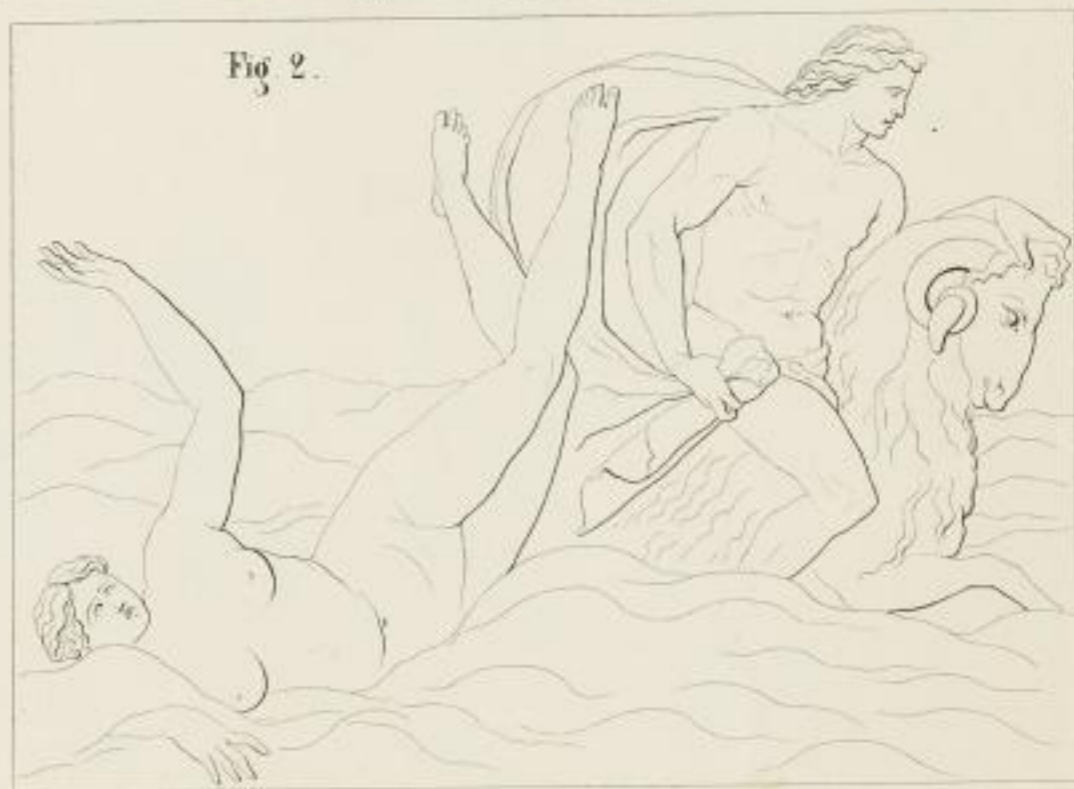


Fig. 2.



Fig. 7.



Fig. 6.

Seymann Bildhauer.



1711

Fig. 1.



Fig. 4.



Fig. 3.



Fig. 2.



Fig. 5.



Fig. 6.



INHALT

Fig. 1.



Fig. 3.



Fig. 2.



Fig. 4.



Fig. 5.



Fig. 6.





SLUB

Wir führen Wissen.





Fig. 2.



Fig. 5.



Fig. 3.

Fig. 4.



Fig. 1.



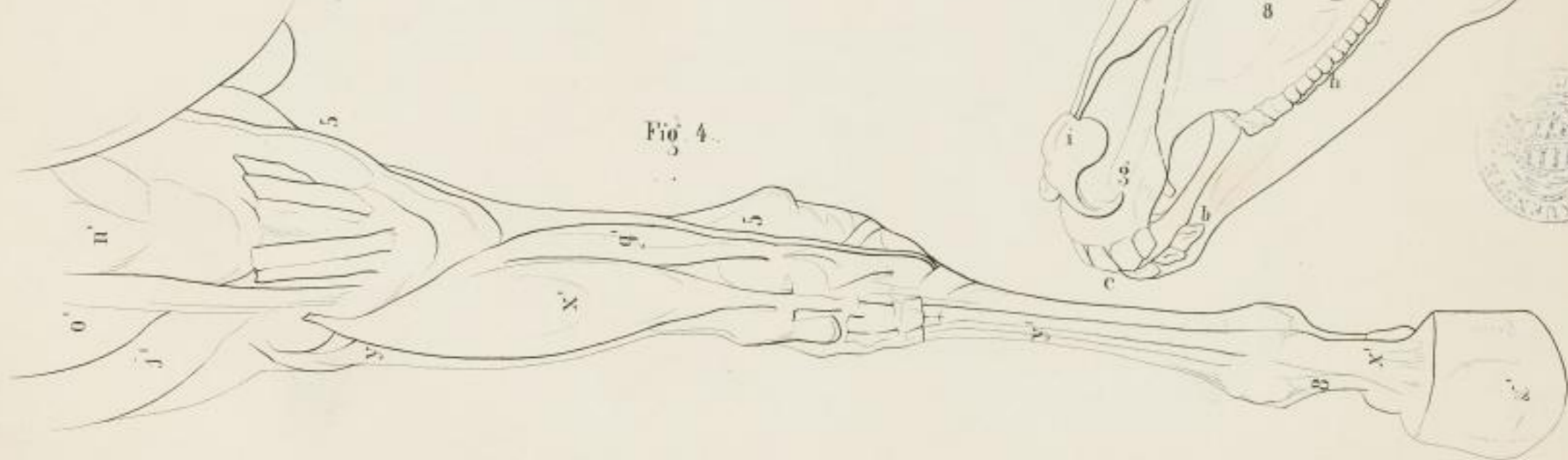
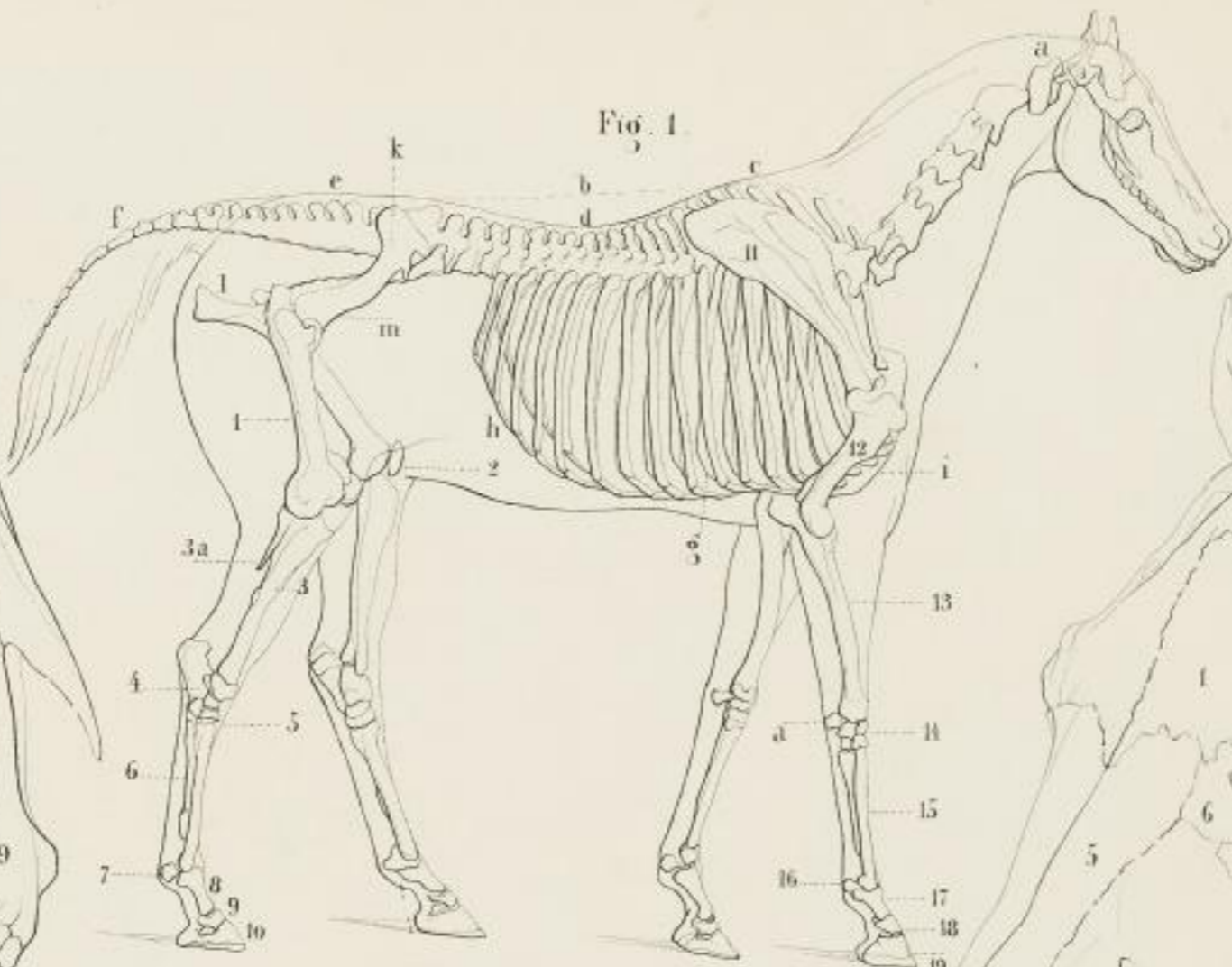
1773



SLUB

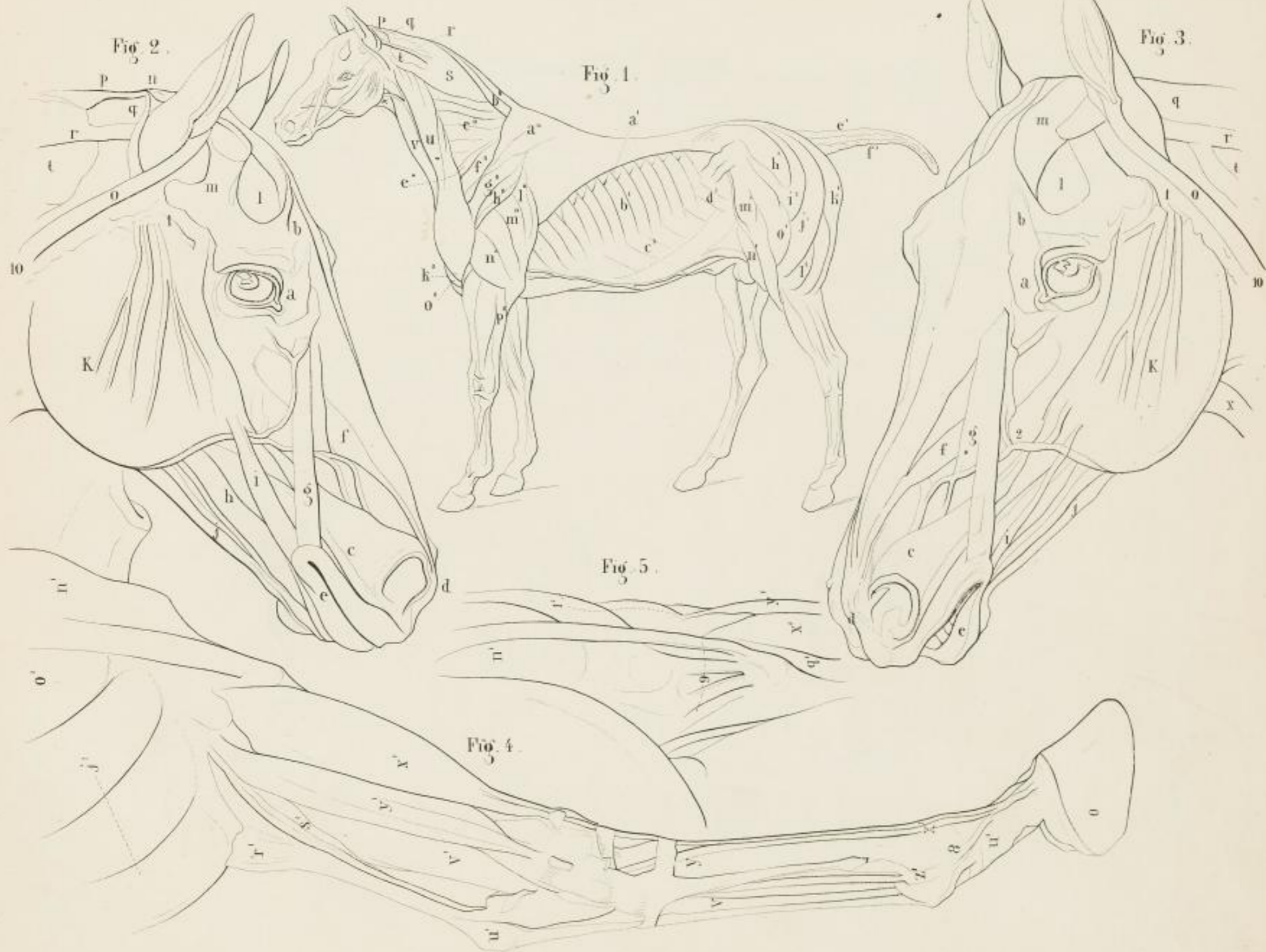
Wir führen Wissen.





Siegmund Bildhauer.

1712



1711

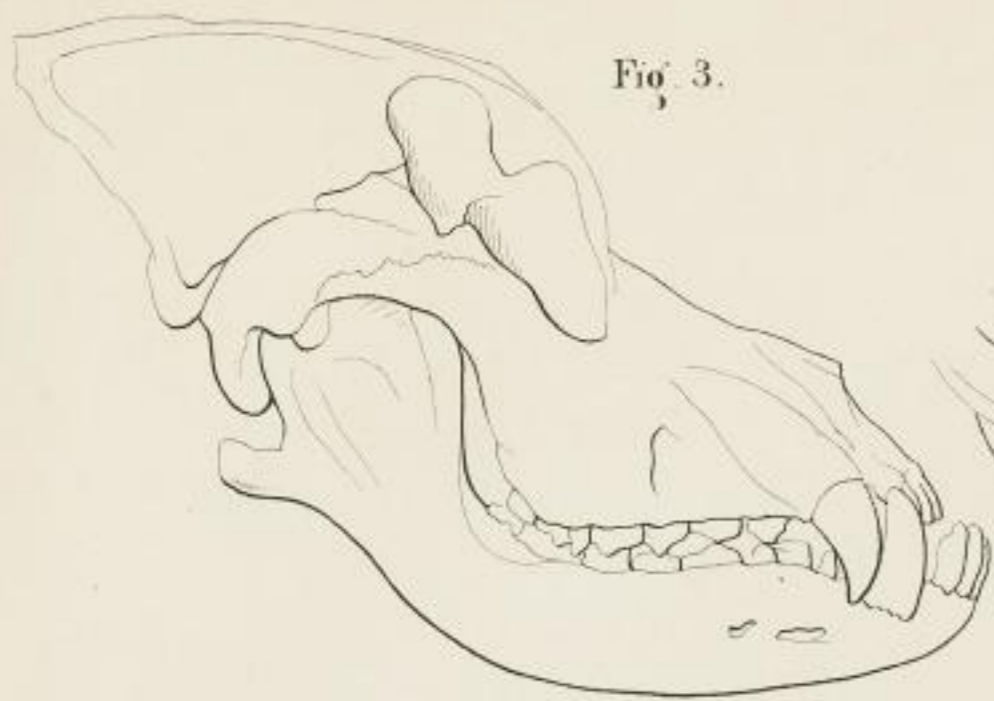


Fig. 3.

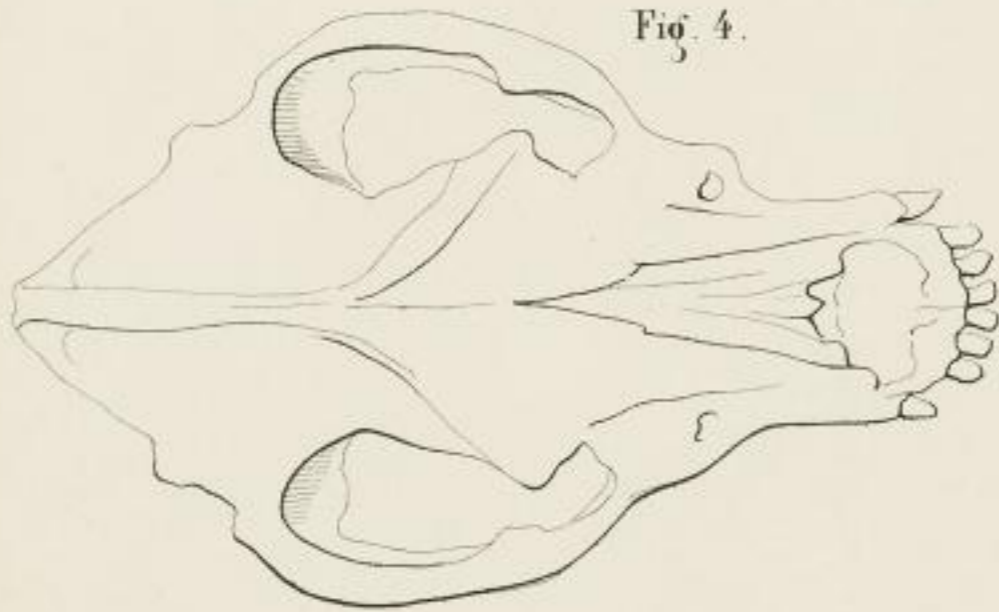


Fig. 4.

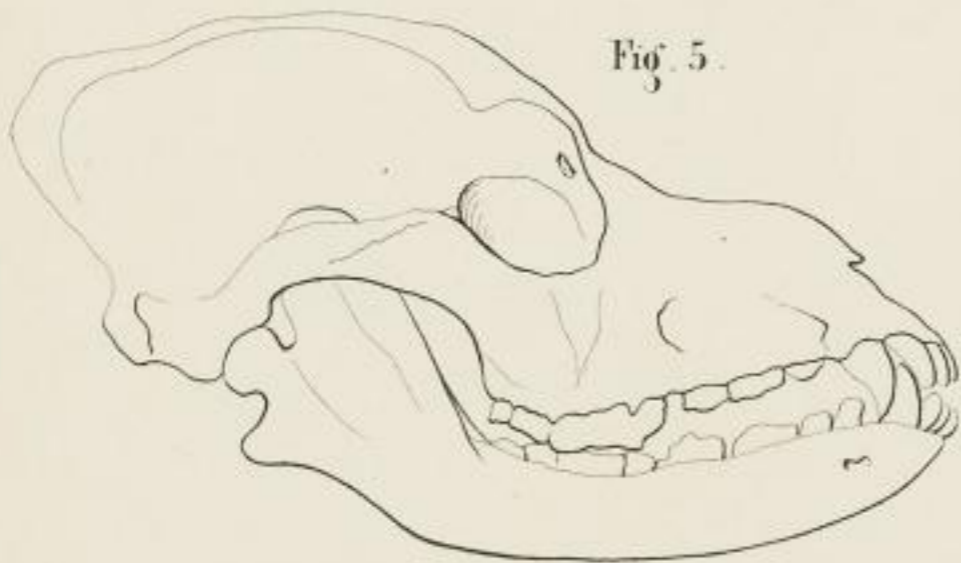


Fig. 5.

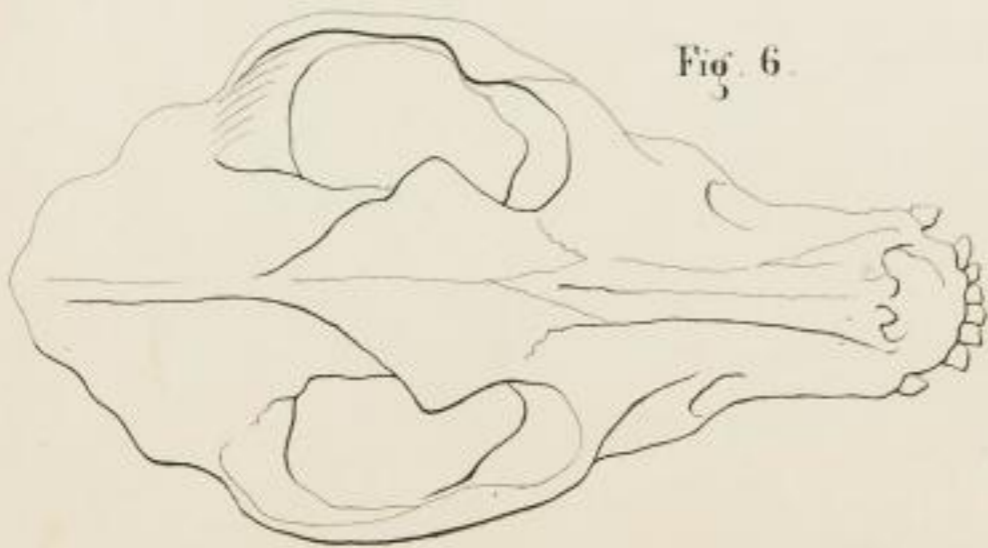


Fig. 6.

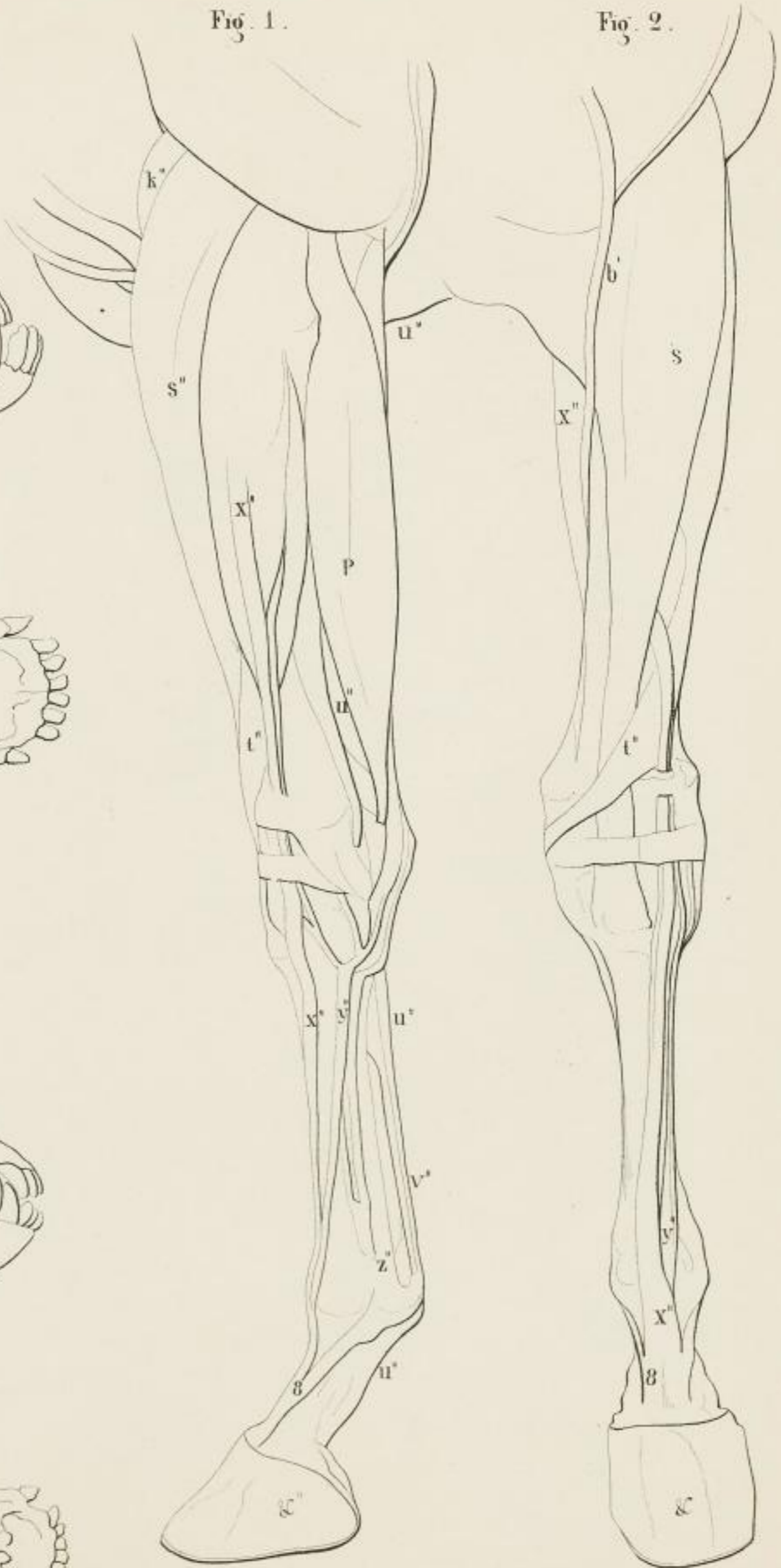


Fig. 1.

Fig. 2.

1811



Fig. 1.



Fig. 3.

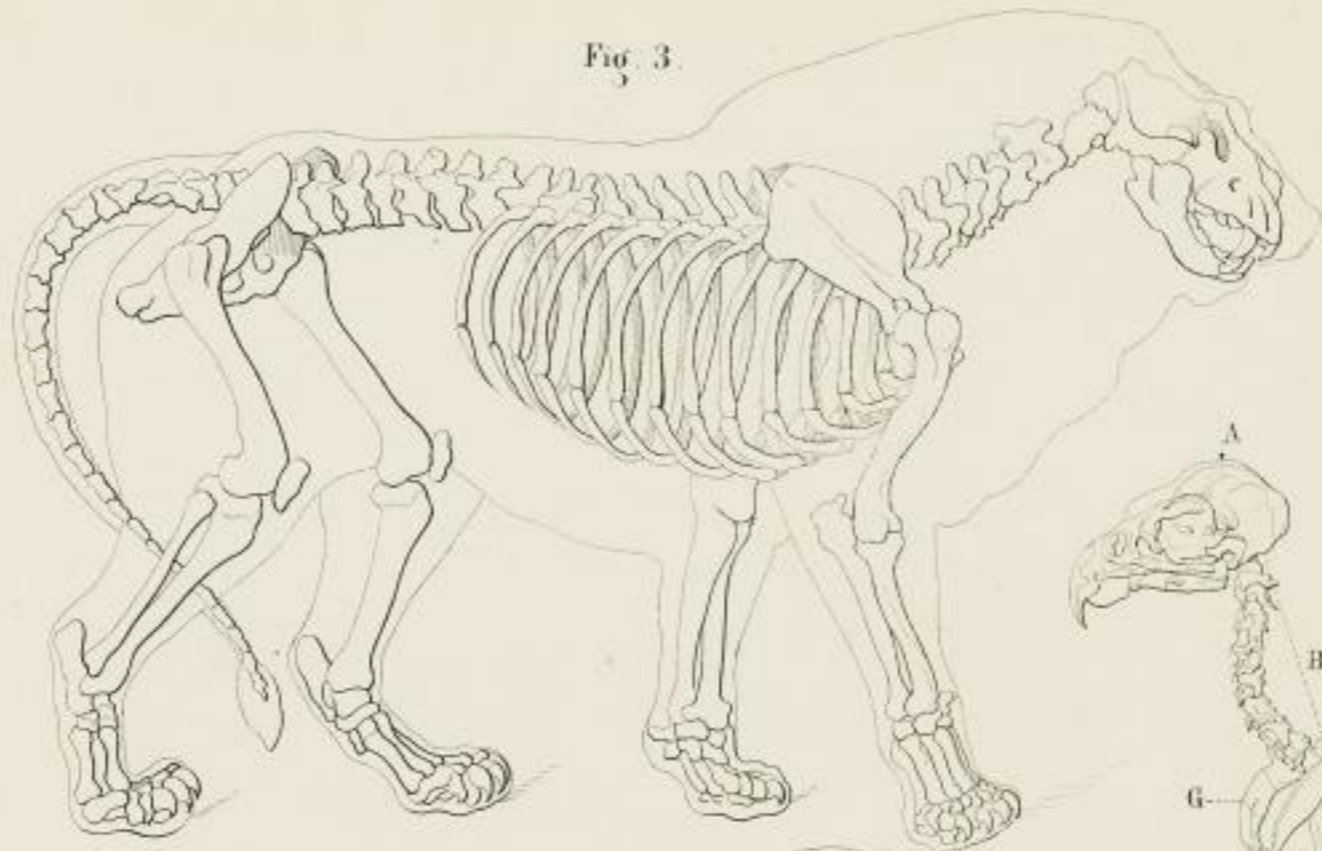


Fig. 6.



Fig. 2.



Fig. 2 a.



Fig. 4.



Fig. 5.

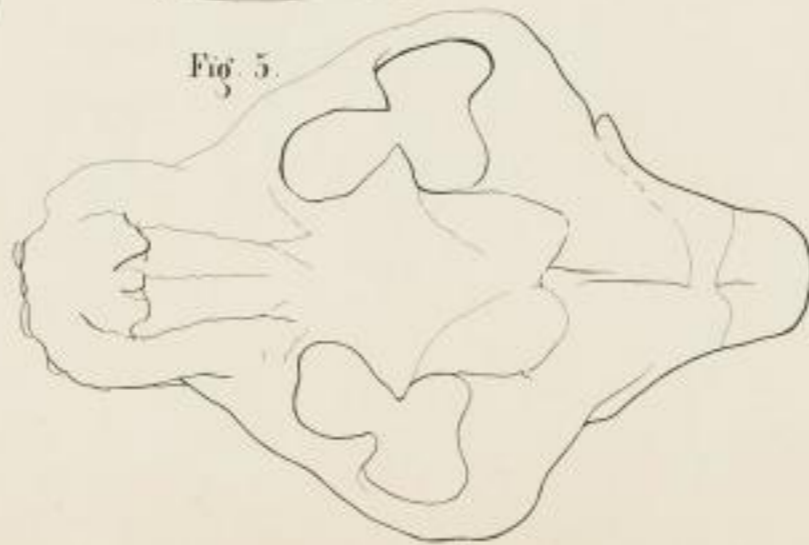
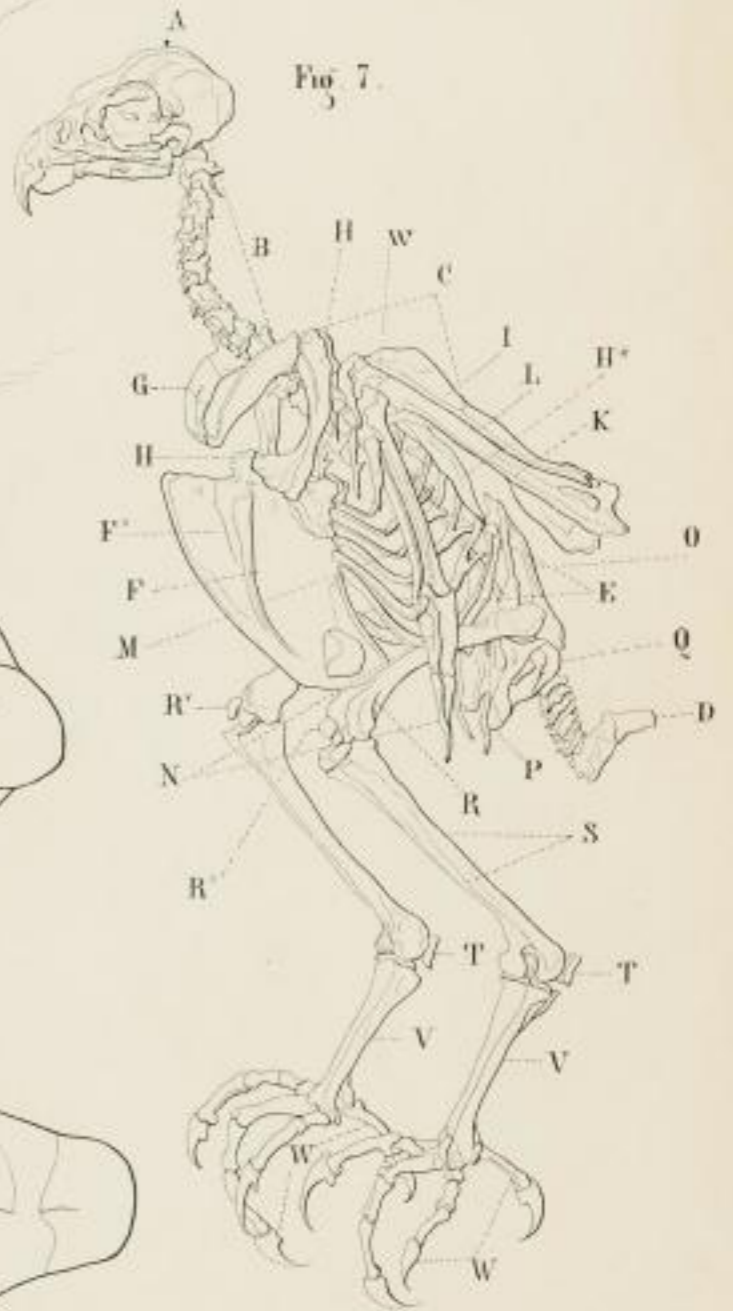


Fig. 7.



11. 11. 1872

Fig. 1.



Fig. 2.

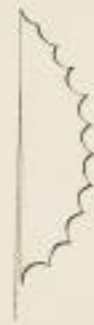


Fig. 3.

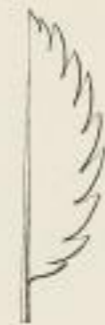


Fig. 8.



Fig. 9.



Fig. 7.



Fig. 20.



Fig. 14.



Fig. 5.

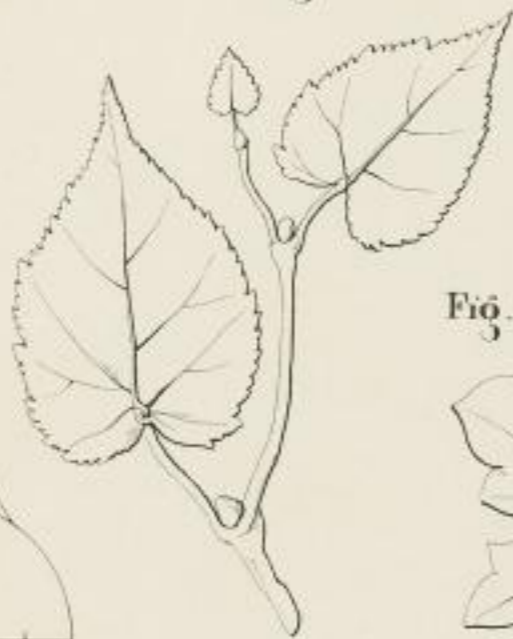


Fig. 6. a



Fig. 4.



Fig. 4. a



Fig. 19.



Fig. 10.



Fig. 5. a

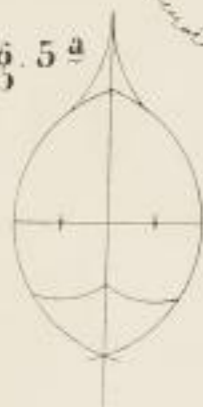


Fig. 6.



Fig. 21.



Fig. 22.



Fig. 15.



Fig. 16.



Fig. 11.



Fig. 13.



Fig. 12.



Fig. 17.



Fig. 18.



1811



SLUB

Wir führen Wissen.



Fig. 1.



Fig. 2.



Fig. 3.



Fig. 4.



Fig. 5.



Fig. 6.



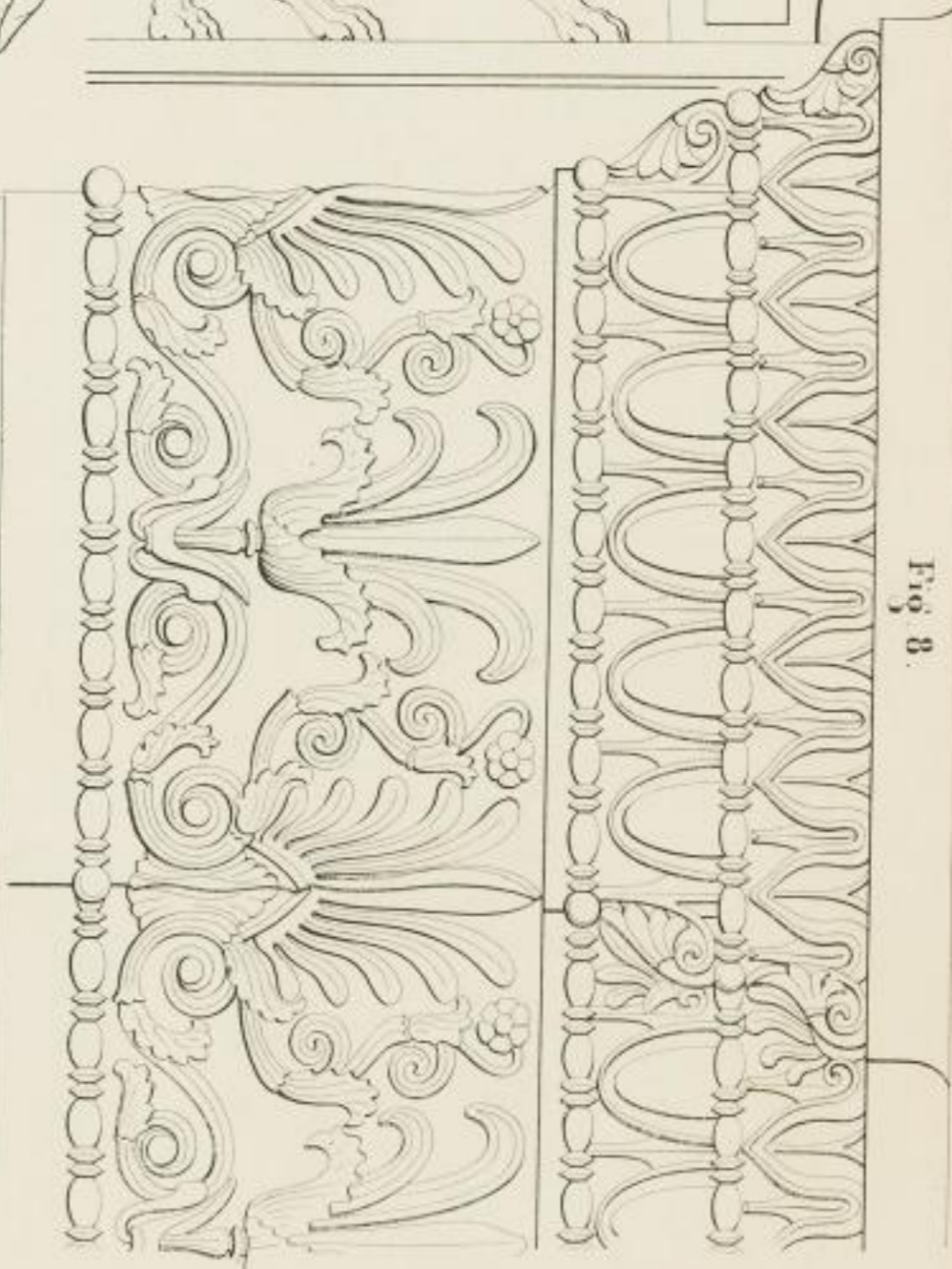
Fig. 9.



Fig. 7.



Fig. 8.



1847



SLUB

Wir führen Wissen.





Fig. 5.

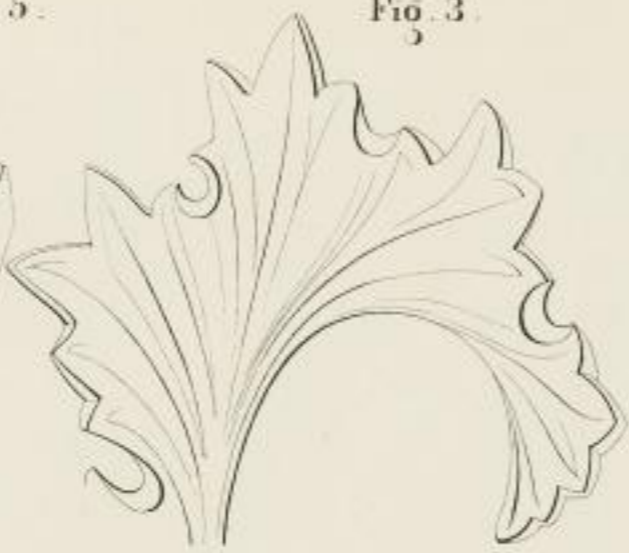


Fig. 3.



Fig. 2.

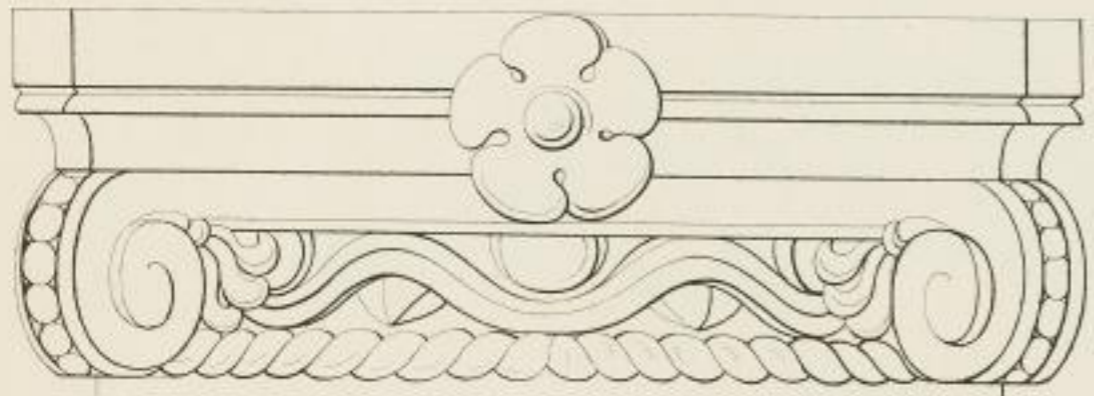


Fig. 6.

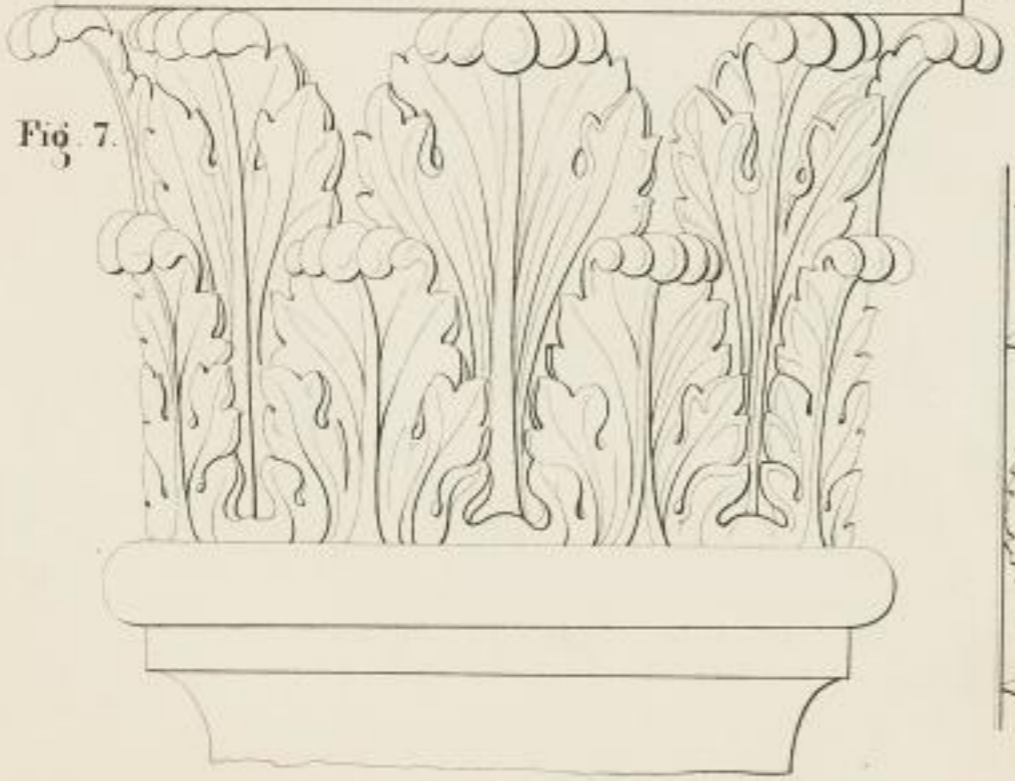


Fig. 7.



Fig. 1.

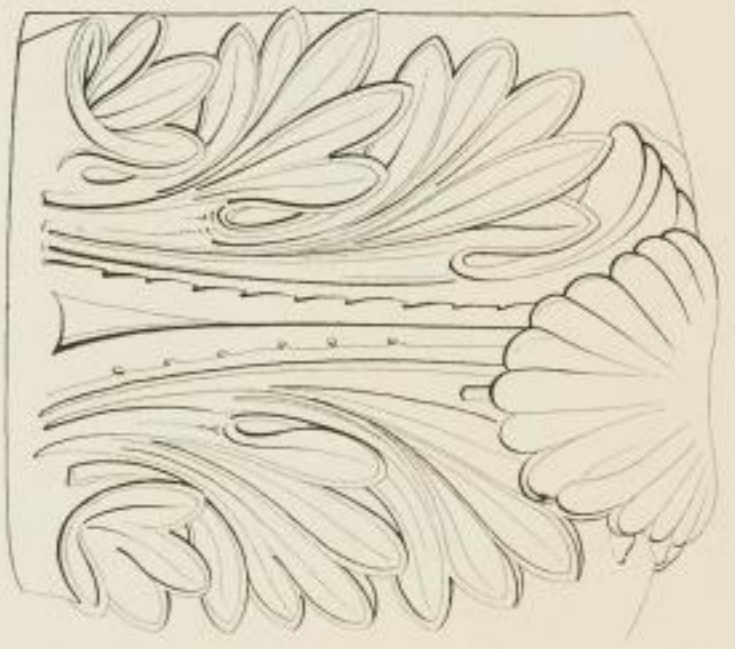


Fig. 4.

1833. 317.

[Faint, illegible handwriting, likely bleed-through from the reverse side of the page.]

Fig. 1.

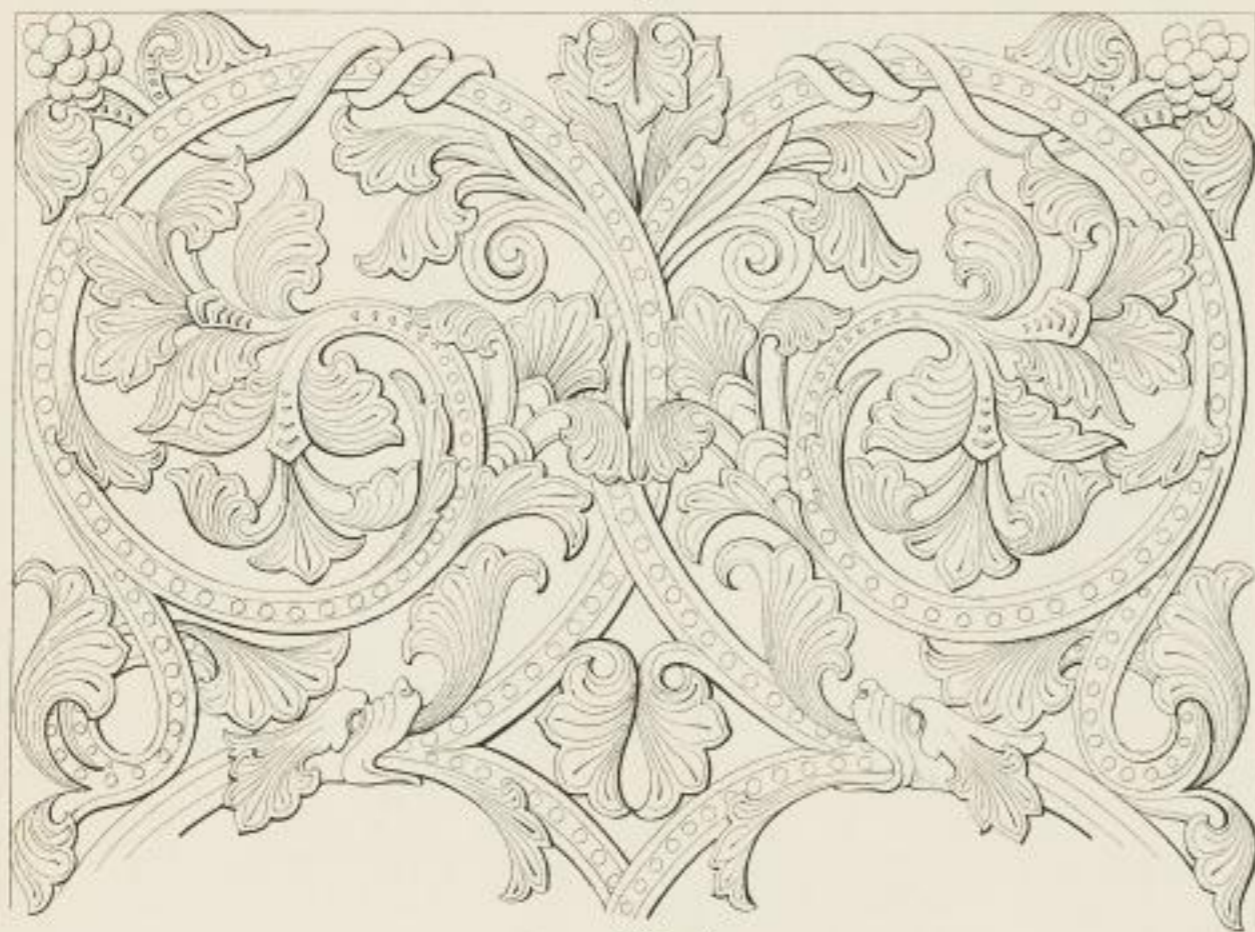


Fig. 2.



Fig. 6.



Fig. 5.



Fig. 3.



Fig. 4.



1888





Fig. 1.



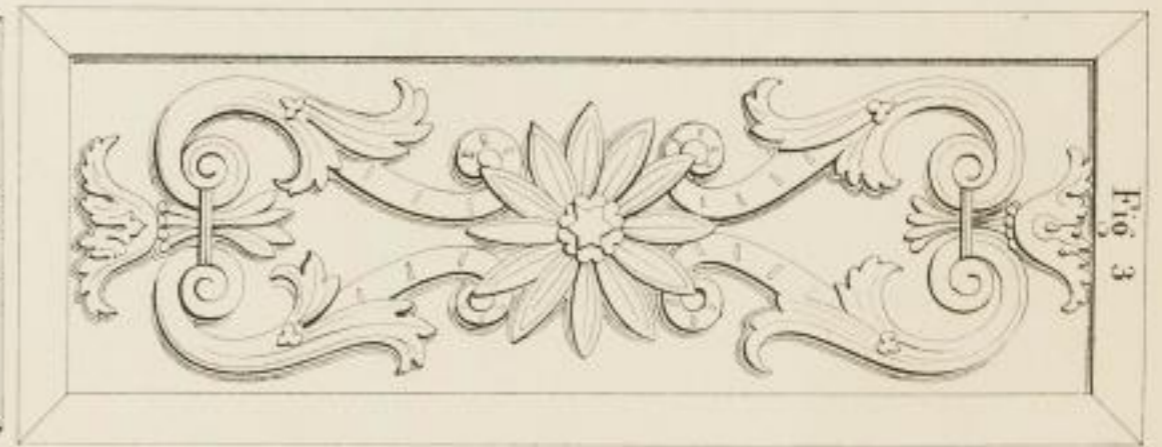
Fig. 2.



Fig. 3.



Fig. 4.



Stegmann Bildhauer.

1811

[Faint, illegible handwriting, possibly bleed-through from the reverse side of the page]

Fig. 5.



Fig. 4.

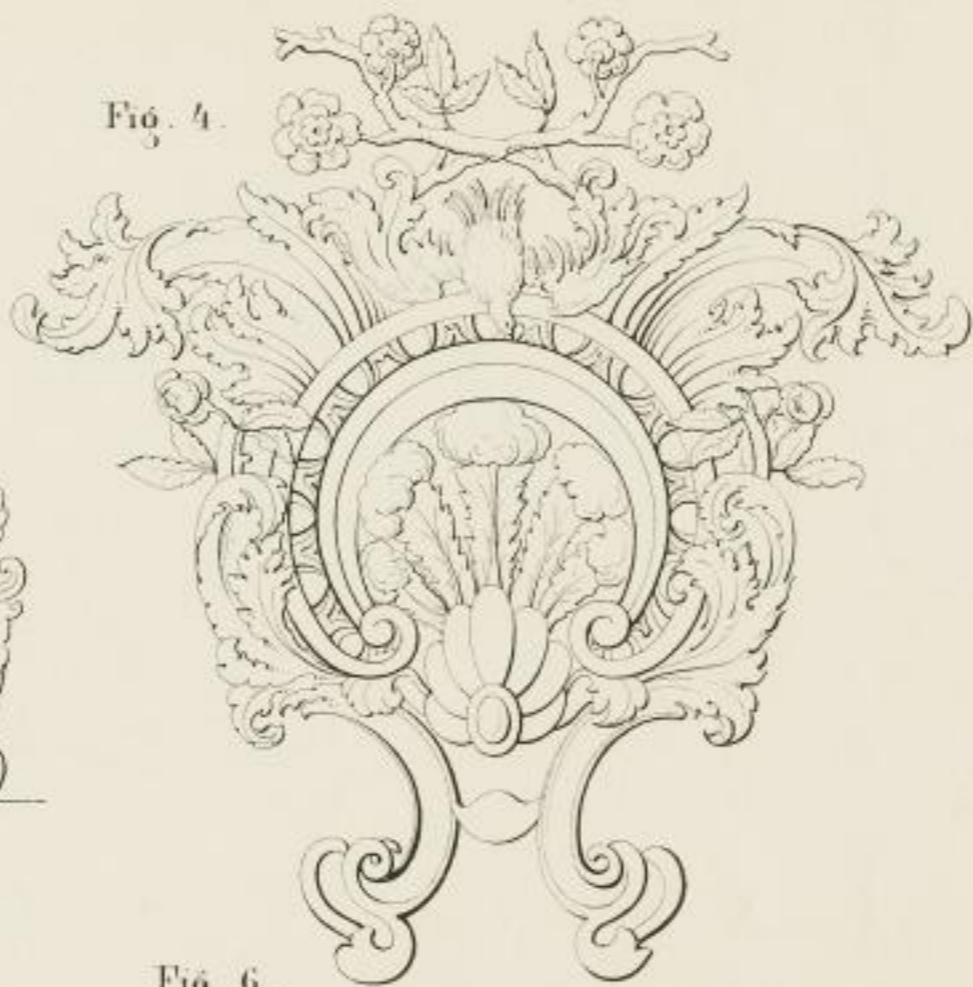


Fig. 3.



Fig. 6.

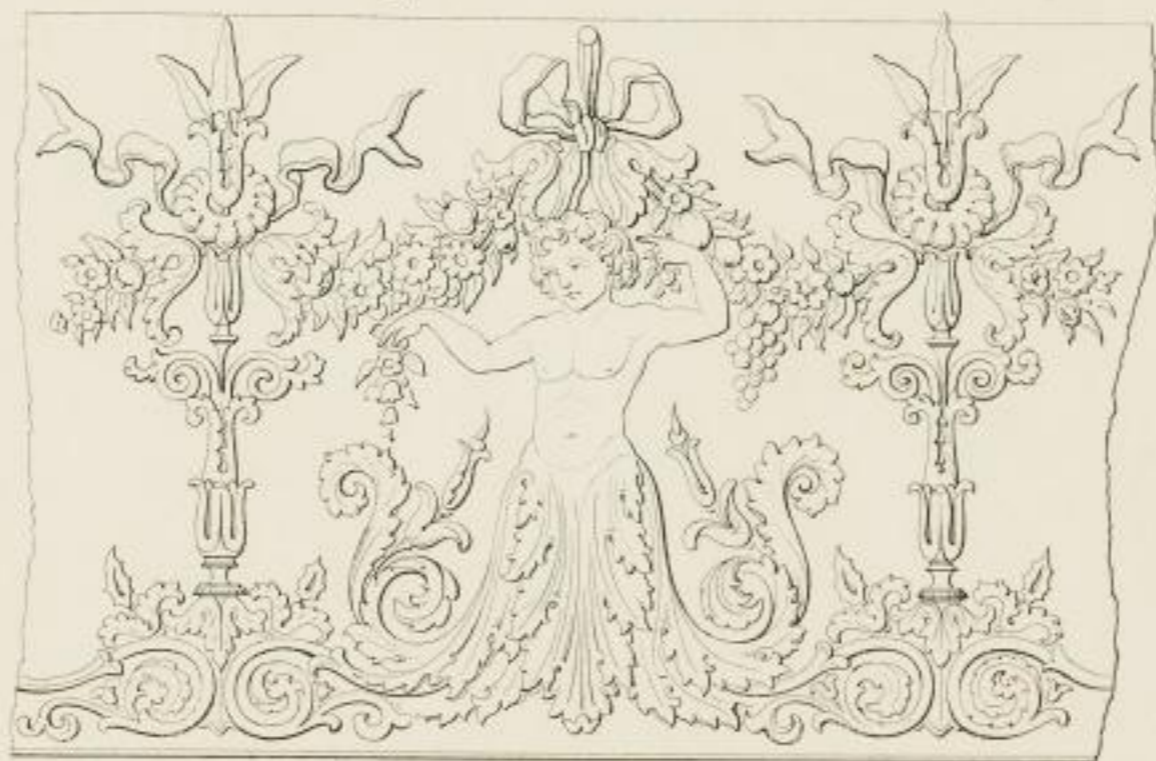


Fig. 2.

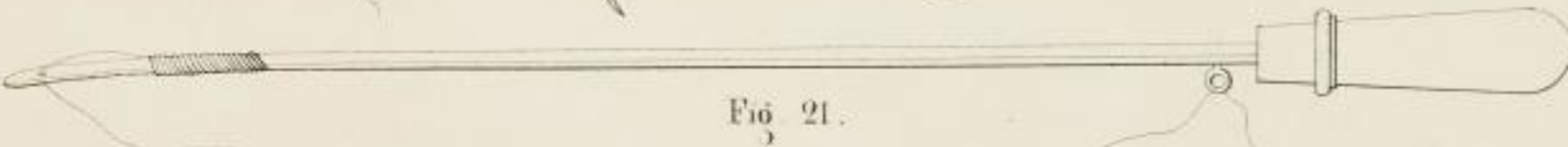
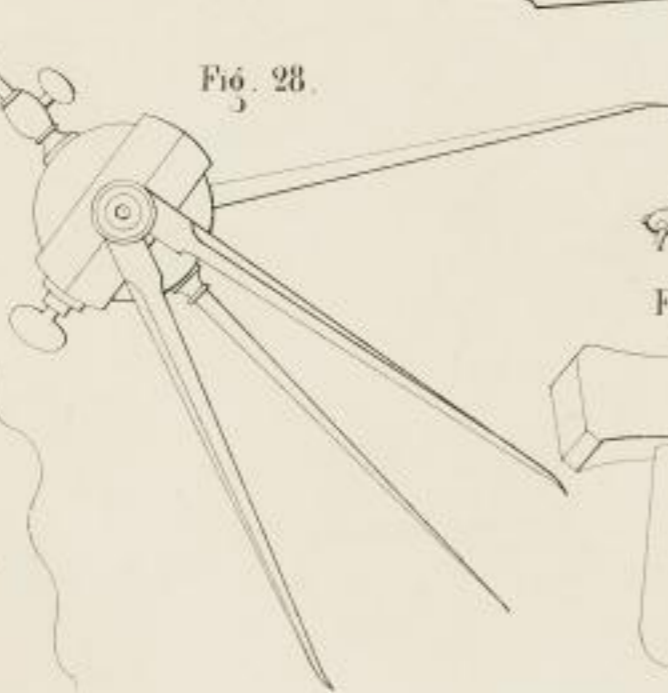
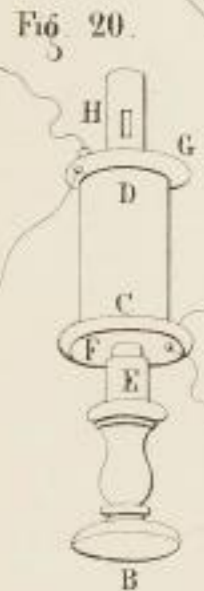
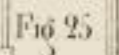
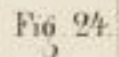
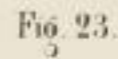
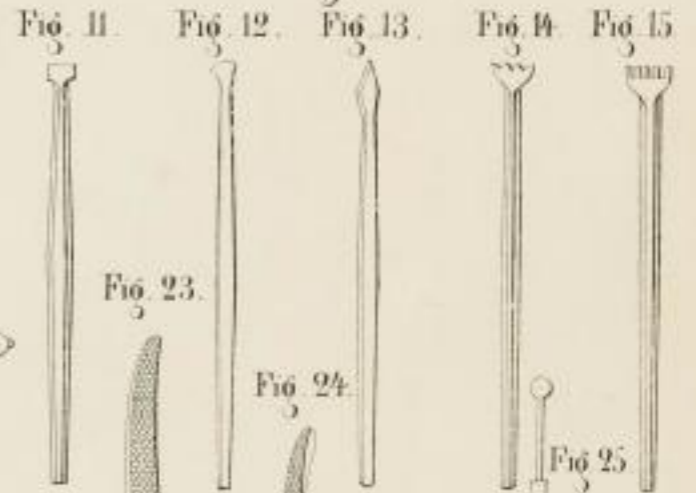
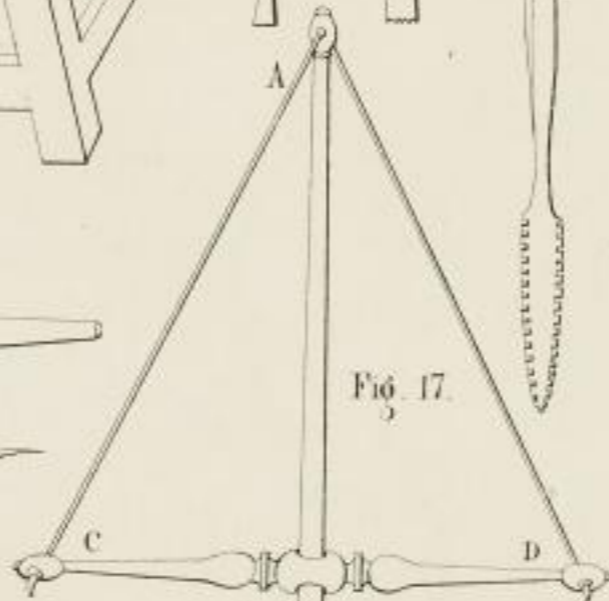
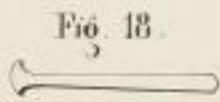
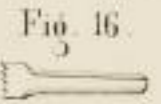
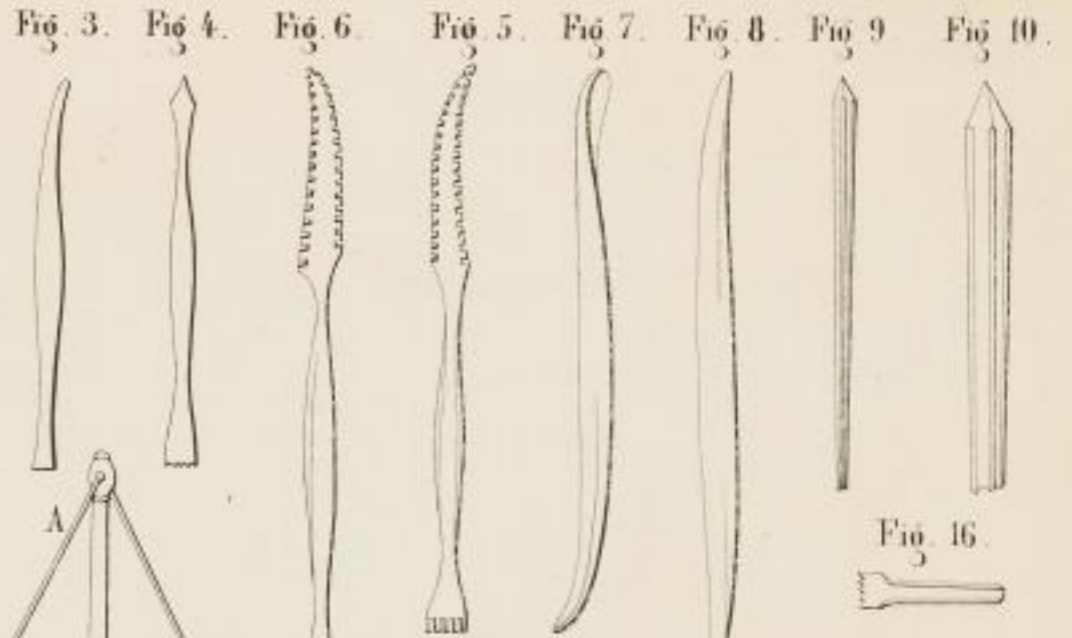
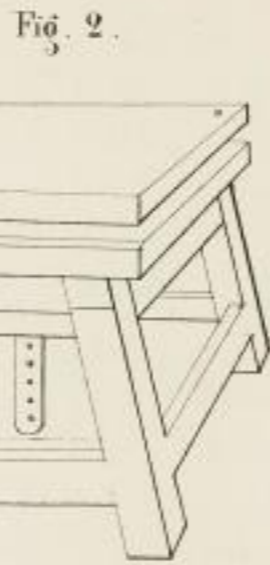


Fig. 1.



INDEX

Faint, illegible text and markings, possibly bleed-through from the reverse side of the page.



UNIVERSITÄT

1871



Fig. 2.

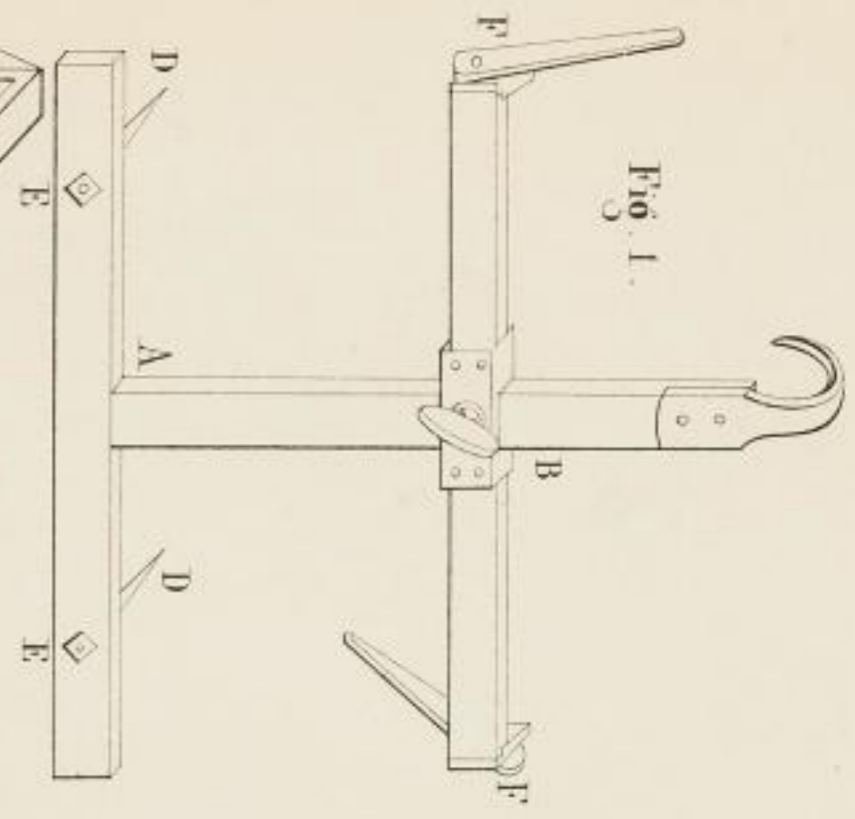
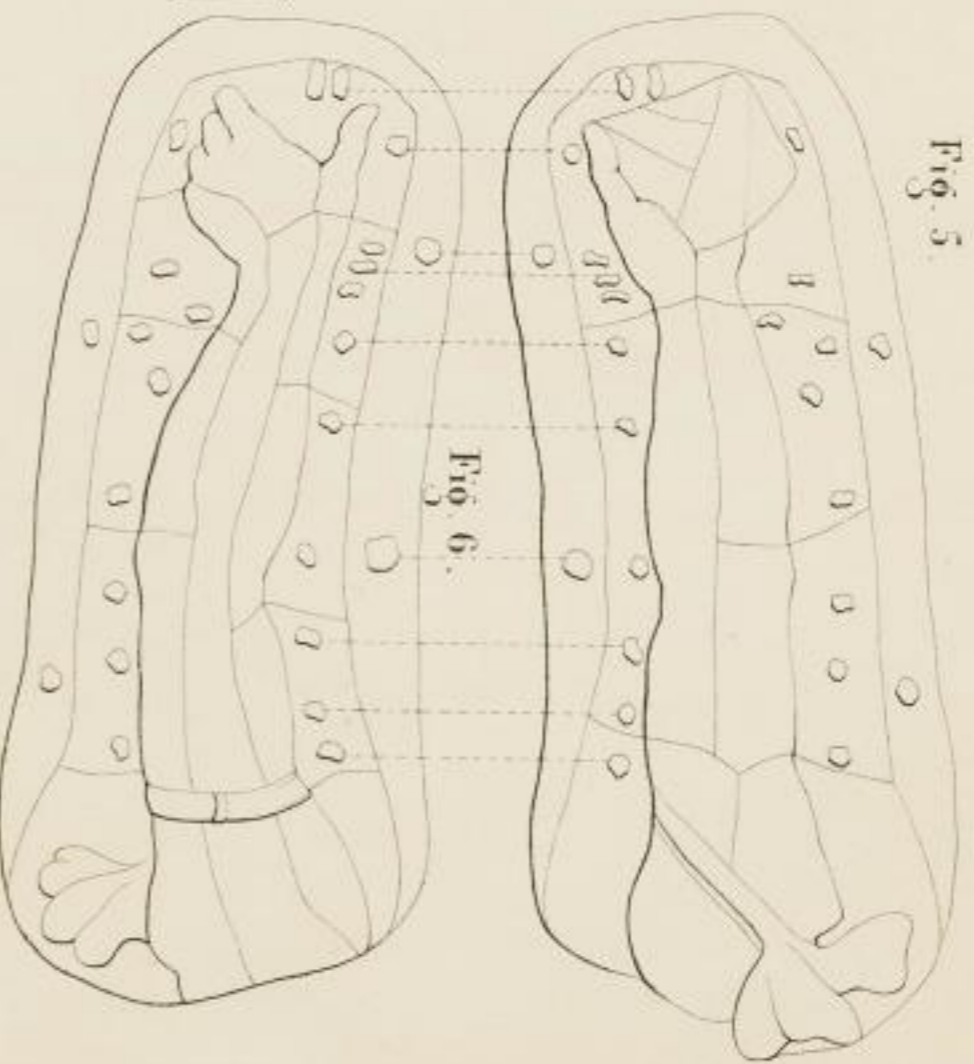


Fig. 3.

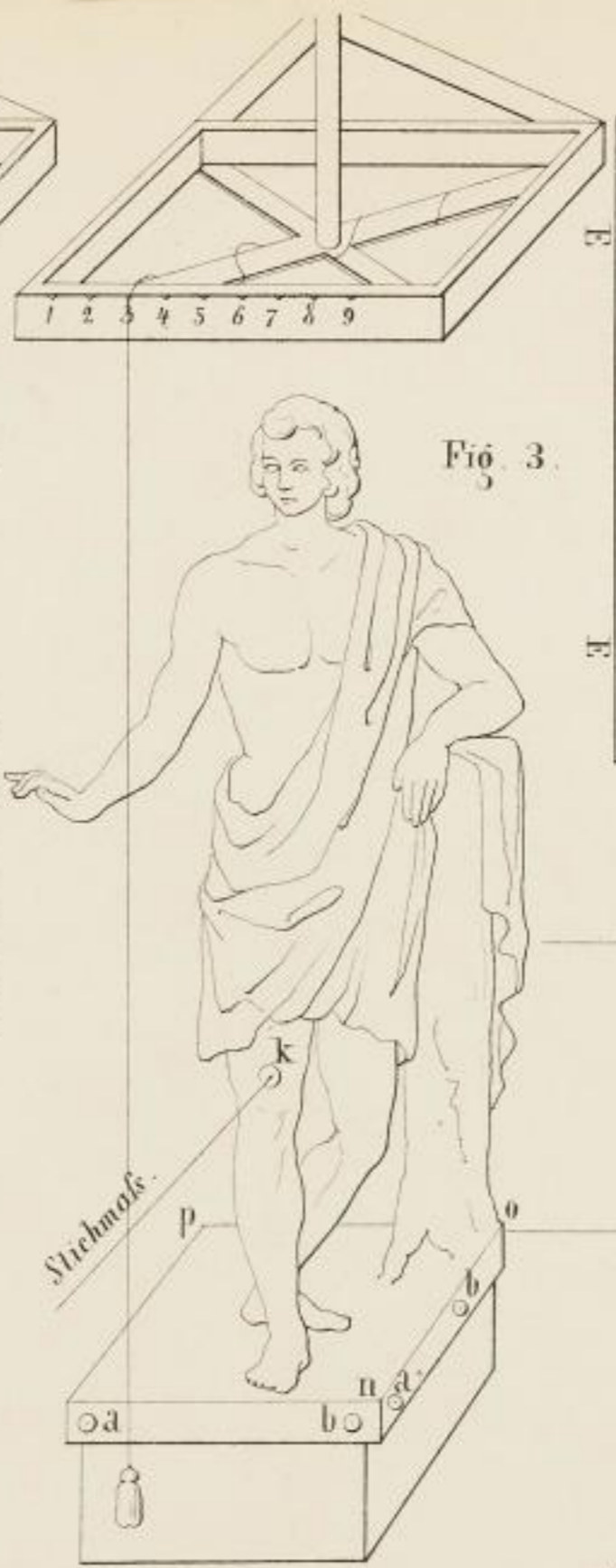


Fig. 4.



1822 107



755

~~2
|
65~~

2
|
55



