

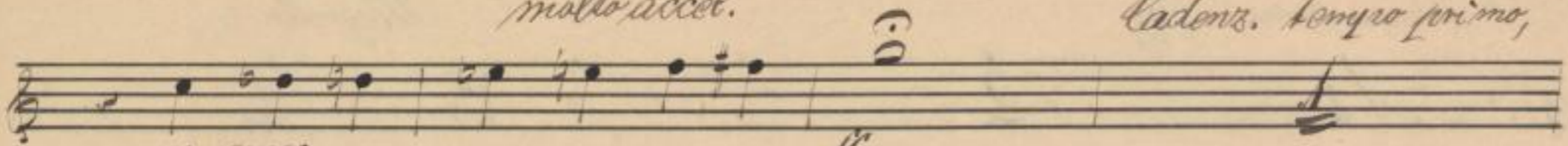
Coro I. no.

molto accel.

*muta in Es(mib)*

*cadenz. tempo primo,*

9



*mf cresc.*

*wieder etwas ruhig beginnend  
(un poco tranquillo da prima.)*

137

138

139

~~*muta in Es*~~



*allmählich immer lebhafter  
(sempre più animato.)*

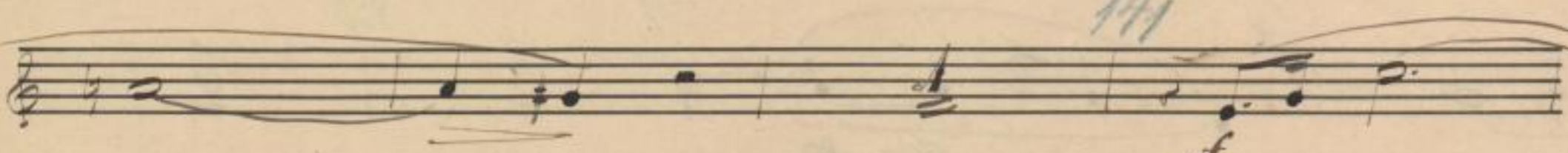
*in Es(mib)*

140

~~*muta in Es(mib)*~~



141

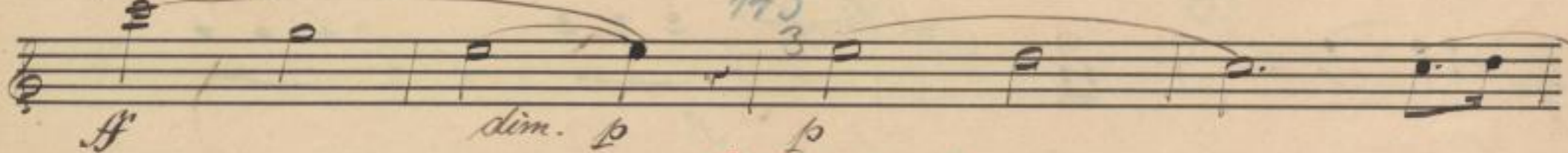


142



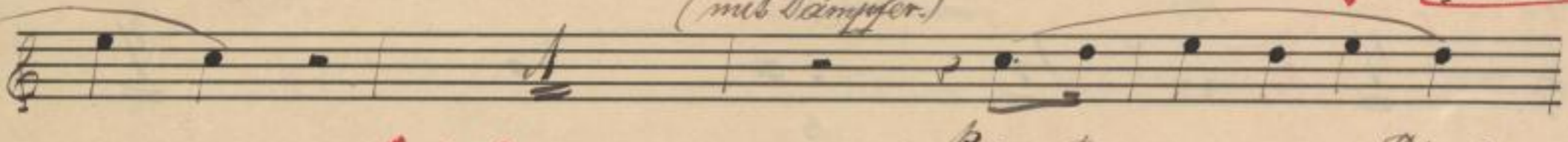
*ff sempre primo*

143



*(con sordino)  
(mit Dämpfer.)*

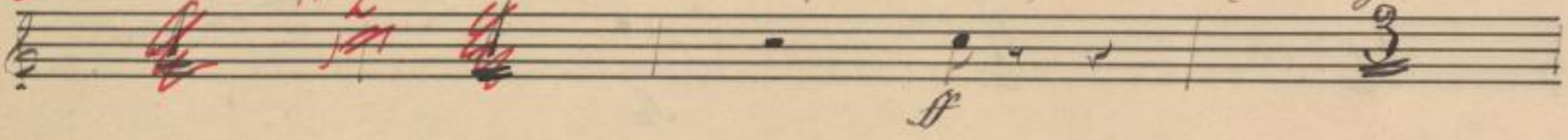
*proco calando*



~~*ff*~~ *(senza sordino)  
(Dämpfer weg)*

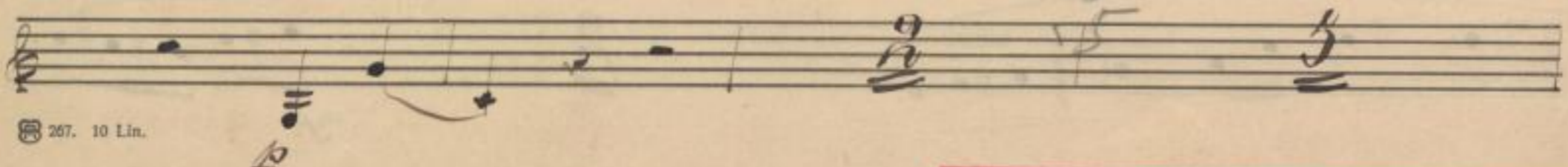
144

*al tempo sehr lebhaft. Recitativo, streng im Rhythmus.  
(molto animato.) (con rigore.)*



145

146



267. 10 Lin.