

Trüheres Zeitmass, doppelt so schnell  
(Tempo primo, doppio movimento.)

222

223

224

Triangolo:



4

225

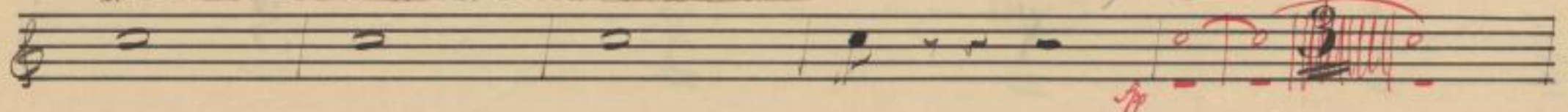
226

Tambour peté.



tr

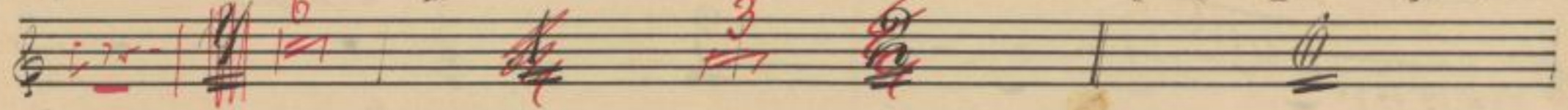
Tambourin



227

poco accelerando

noch schneller  
(ancora più Allegro.)



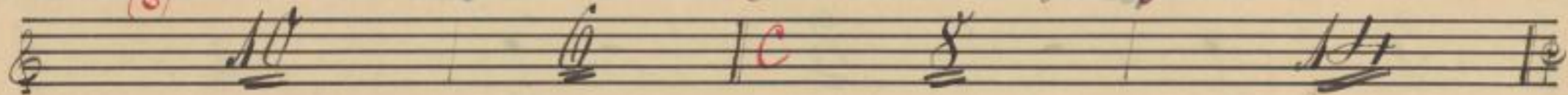
228

(ganze Takte schlagen.)

229

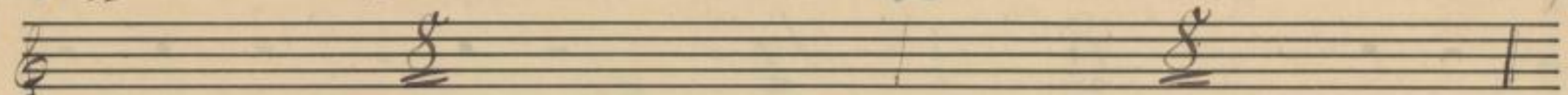
doppelt so langsam.  
(Allegro movimento.)

230



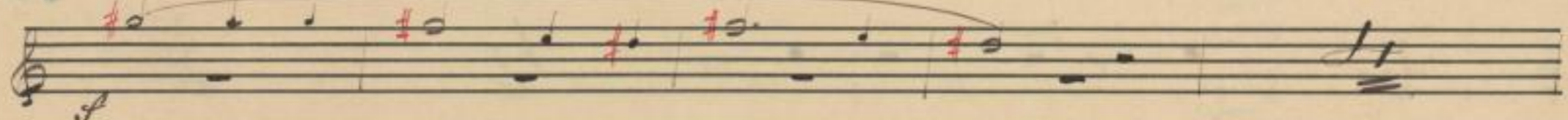
231 doppelt so schnell (schneller als die erste Probe.)  
Doppio movimento, più mosso che la prima volta.

232



233

Violine:

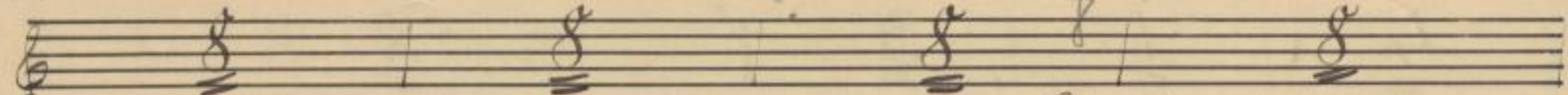


234

235

236

237

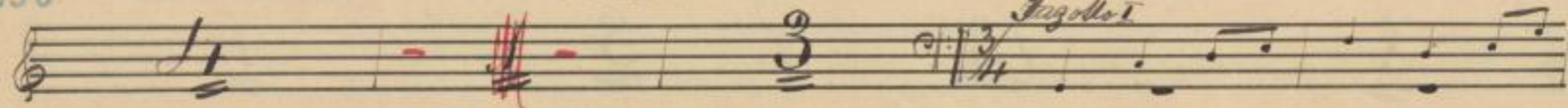


238

accelerando.

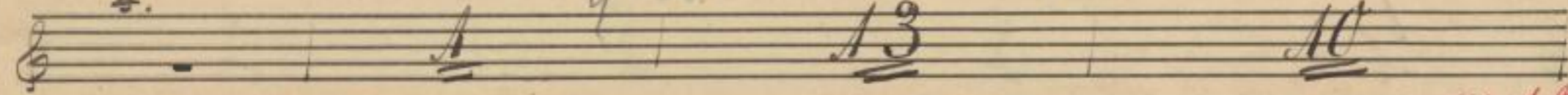
Schnell  
(Vivo.)

Fingollet



239

240



Handwritten red scribbles and notes at the bottom of the page.