

ca
16

~~B 850~~

385,14

Alle Dame
1759

Del Sig^{to} Dom^o:

Terracella

Andante

Mi regina ubi ora

830

Mus. 3016-F-1,1

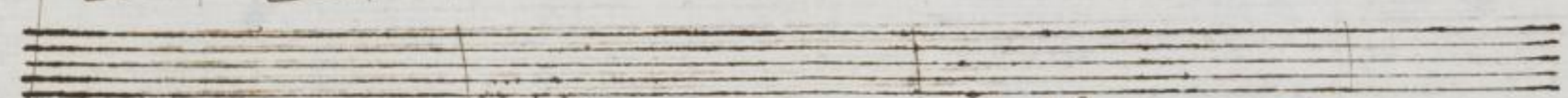
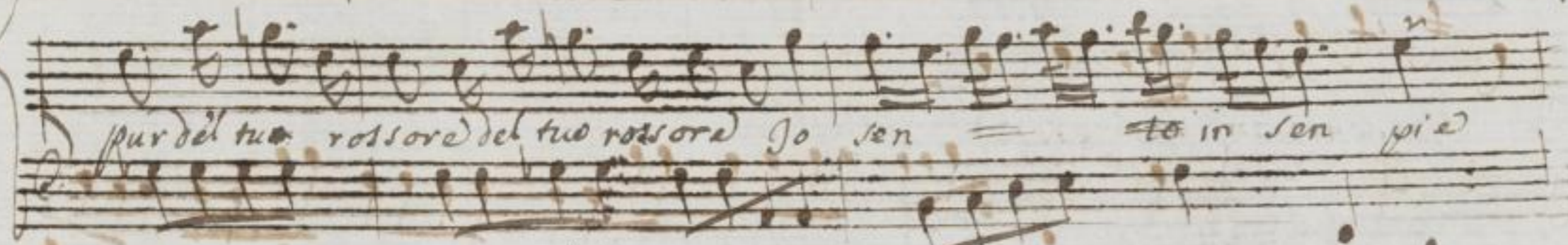
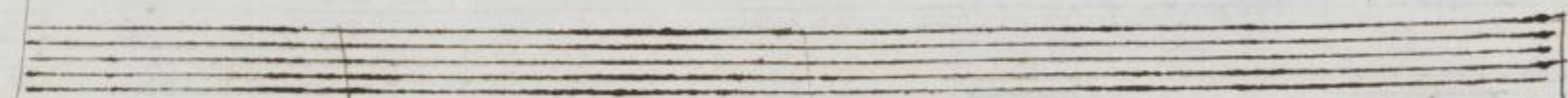
anima senza fede a = nima senza fede e il labro tuo non osa chie

Cor mi ancor mercede e pur del tuo rossore sen-to in sen pie

Handwritten musical score on aged paper, featuring ten staves. The score includes vocal lines with lyrics and piano accompaniment. The lyrics are: "ta pur del tuo rossore) sento in Ten pietà Io sento in Ten pietà". The notation includes various musical symbols such as notes, rests, and clefs. The paper shows signs of age, including foxing and staining.

Mi vedi andar dubiosa anima senza fede a = nima senza
 fede il labro tuo non osa chie = Ter mi ancor mercede

The manuscript features two systems of music. Each system consists of a vocal line (top staff) and a lute tablature line (bottom staff). The tablature uses letters (a, b, c, d, e, f, g) to indicate fret positions on the strings. The paper shows signs of age, including foxing and some staining.



poco son
O Vni

Io sento in sen pietà

Parlar in tuo fauore S'ora infedel non sai quan = do parlar vor =

rai parler vorrai inutile sa = ra inutile sa =

ra = inuti = te sarä

Da Capo