

Fig. 1.

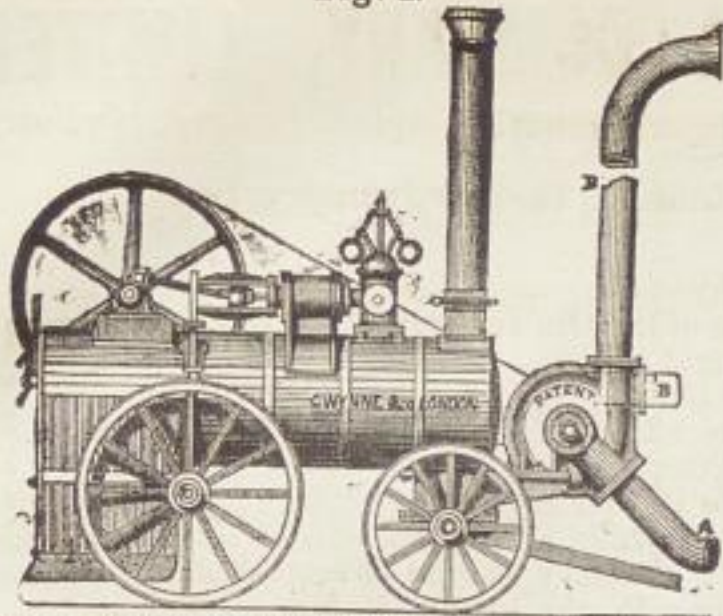


FIG. 1.—Patent Portable Pumping Engine, with Pump fixed to Engine; made in all sizes.

Fig. 2.

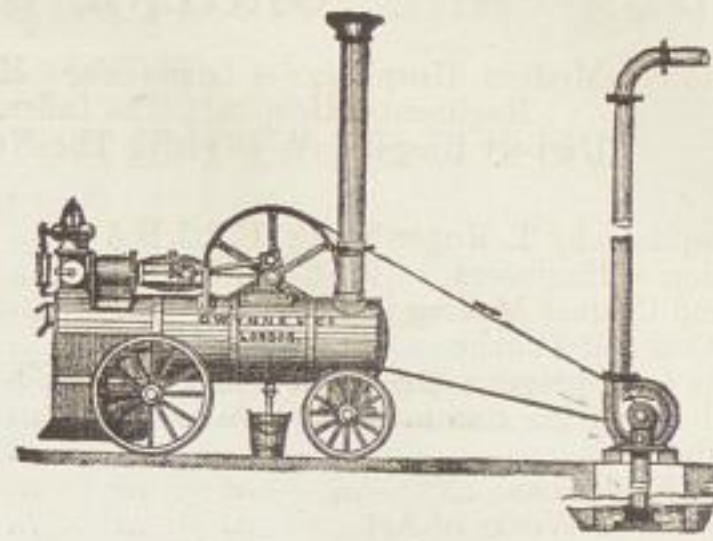


FIG. 2.—Pump driven by Portable Engine; made in all sizes, and adapted for every class of work.

# GWYNNE & Co.'s PATENT DOUBLE-ACTION CENTRIFUGAL PUMPING MACHINERY,

FOR IRRIGATION, DRAINAGE, MANUFACTURING, AND OTHER USES.

GWYNNE & Co. have erected the largest Pumping Machinery in the World, they have also erected more of all powers than any other firm in existence, and are prepared to contract that their Machinery will do much more work with less cost of coal, and that they are more durable, powerful, simple, and cheaper than any other makers; its great superiority over all others has been proved by numerous Official and Government experiments.

This Machinery has received the highest commendation; and Thousands of Engineers, Manufacturers, and others using it, can be referred to in all parts of the World.

Prize Medals awarded at the International Exhibition of London 1862, Cologne 1865, and New York 1853; Gold Medal at Antwerp; Silver Medals at Rouen, Nantes, Louvain, Calcutta, &c., &c.

### FOR MANUFACTURING PURPOSES

They are largely in use; among others, by Paper Makers, Brewers, Distillers, Dyers, Chemists, Tanners, Sugar Refiners, Bleachers, Calico Printers, Carpet Manufacturers, Engineers and Iron Founders, Woollen Cloth and Blanket Manufacturers, Oil Refiners, Soap, Alkali, Salt, Starch, and Candle Works, Water Works, Lime and Cement Works, Quarries, Coal and Iron Mines, Sheep washing, Public Baths, Cotton, Flax, Match, Felt, Oil and other Mills, &c., &c. Numerous references to all the foregoing can be had on application.

### FOR DRAINAGE WORKS

G. & Co.'s Patent Centrifugal Pumps are in very extensive use, and some of the largest tracts of land in this country, and in Holland, Italy, Austria, France, Belgium, Denmark, Demerara, &c., are kept dry by their use.

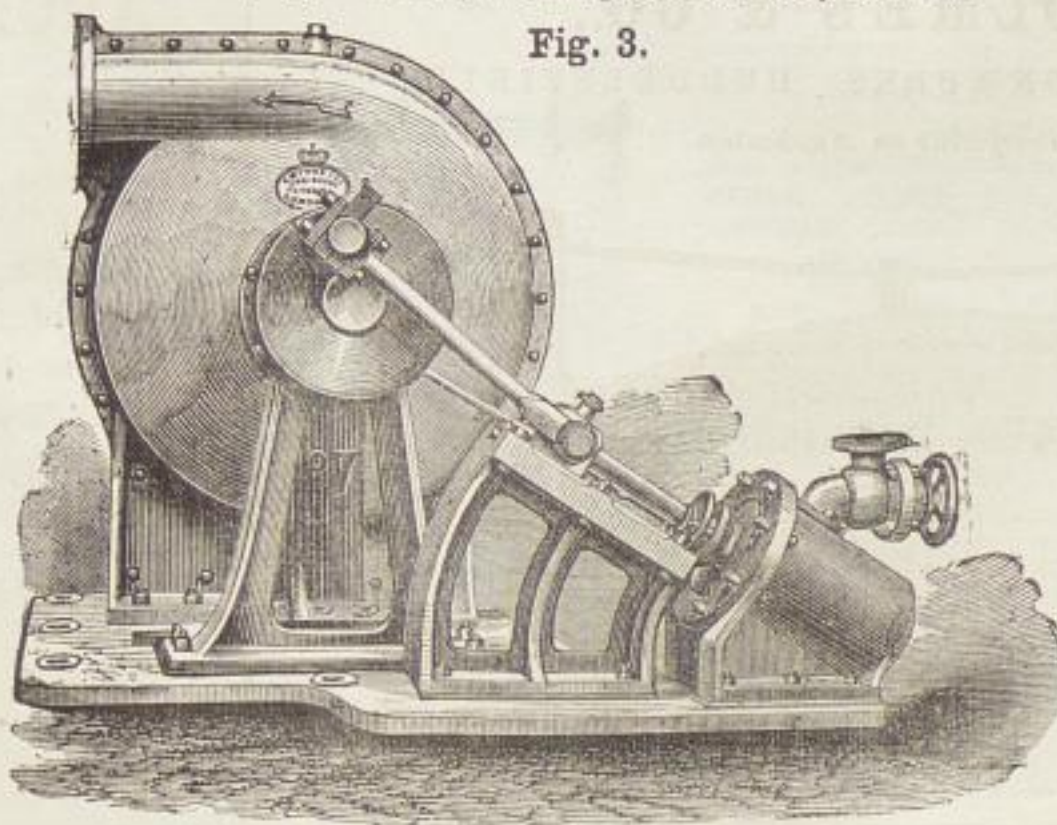
### FOR IRRIGATION WORKS

They have been selected for very extensive Works in Egypt, Turkey, Spain, France, Belgium, India, Ceylon, Java, China, Australia, Porto Rico, &c.

### FOR EMPTYING DRY OR CRAVING DOCKS, MINES, QUARRIES, &c.

They are quite unequalled, and will be found to excel all other arrangements, discharging a body of Water in proportion to the lift, the speed of engines and power remaining the same; they will empty a dock in a shorter time and with much less power than is requisite with any other system. The first cost of machinery, the erection, and the foundations and brickwork necessary, are much less expensive than with any other arrangement, and the cost of keeping in thorough working order is merely nominal.

Fig. 3.



Estimates for any Situation forwarded upon application.

List of Prices Free on Receipt of Two Stamps.

PUMPS of all sizes kept in stock,

and immediate delivery can be made.

FIG. 3.—Patent Pumping Engine, for use on Board Ship, for Surface Condensers, Propelling, for use in Coal Pits, Mines, Quarries, Factories, Dockyards, &c

# GWYNNE & CO.,

Hydraulic and Mechanical Engineer Essex Street Works, Strand, London, W.C.