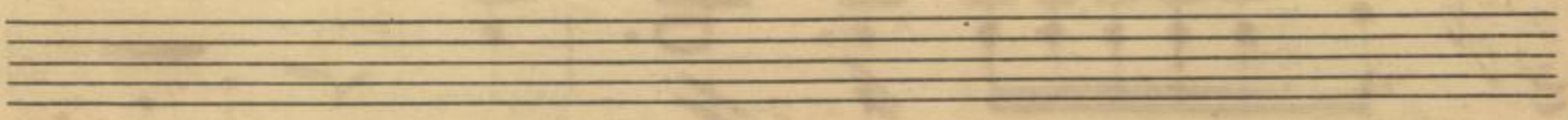


Handwritten musical notation on a single staff. It begins with a treble clef and a key signature of two flats (B-flat and E-flat). The first measure contains a whole rest. The second measure is a half note G4. The third measure is a quarter note A4. The fourth measure is a quarter note B-flat4. The fifth measure is a quarter note C5. The sixth measure is a quarter note B-flat4. The seventh measure is a quarter note A4. The eighth measure is a quarter note G4. The piece ends with a double bar line. The dynamic marking *pp* is written below the first measure.

Handwritten musical notation on a single staff. It begins with a treble clef and a key signature of two flats. The first measure is a whole rest. The second measure is a half note G4. The third measure is a quarter note A4. The fourth measure is a quarter note B-flat4. The fifth measure is a quarter note C5. The sixth measure is a quarter note B-flat4. The seventh measure is a quarter note A4. The eighth measure is a quarter note G4. The piece ends with a double bar line. The dynamic marking *pp* is written below the first measure.

Handwritten musical notation on a single staff. It begins with a treble clef and a key signature of two flats. The first measure is a quarter note G4 with a triplet bracket above it. The second measure is a quarter note A4 with a triplet bracket above it. The third measure is a quarter note B-flat4 with a triplet bracket above it. The fourth measure is a quarter note C5 with a triplet bracket above it. The fifth measure is a quarter note B-flat4 with a triplet bracket above it. The sixth measure is a quarter note A4 with a triplet bracket above it. The seventh measure is a quarter note G4 with a triplet bracket above it. The eighth measure is a quarter note F4 with a triplet bracket above it. The ninth measure is a quarter note E4 with a triplet bracket above it. The tenth measure is a quarter note D4 with a triplet bracket above it. The eleventh measure is a quarter note C4 with a triplet bracket above it. The twelfth measure is a quarter note B3 with a triplet bracket above it. The thirteenth measure is a quarter note A3 with a triplet bracket above it. The fourteenth measure is a quarter note G3 with a triplet bracket above it. The piece ends with a double bar line. The dynamic marking *f* is written below the eleventh measure.



*Die drei Himmeln
weisen*

