

III

OVERTURA

*Con Violini Oboè Trombe
e Corni da Caccia Viola
e Timpano*

Del Fv

Sig: Leonardo Vinci

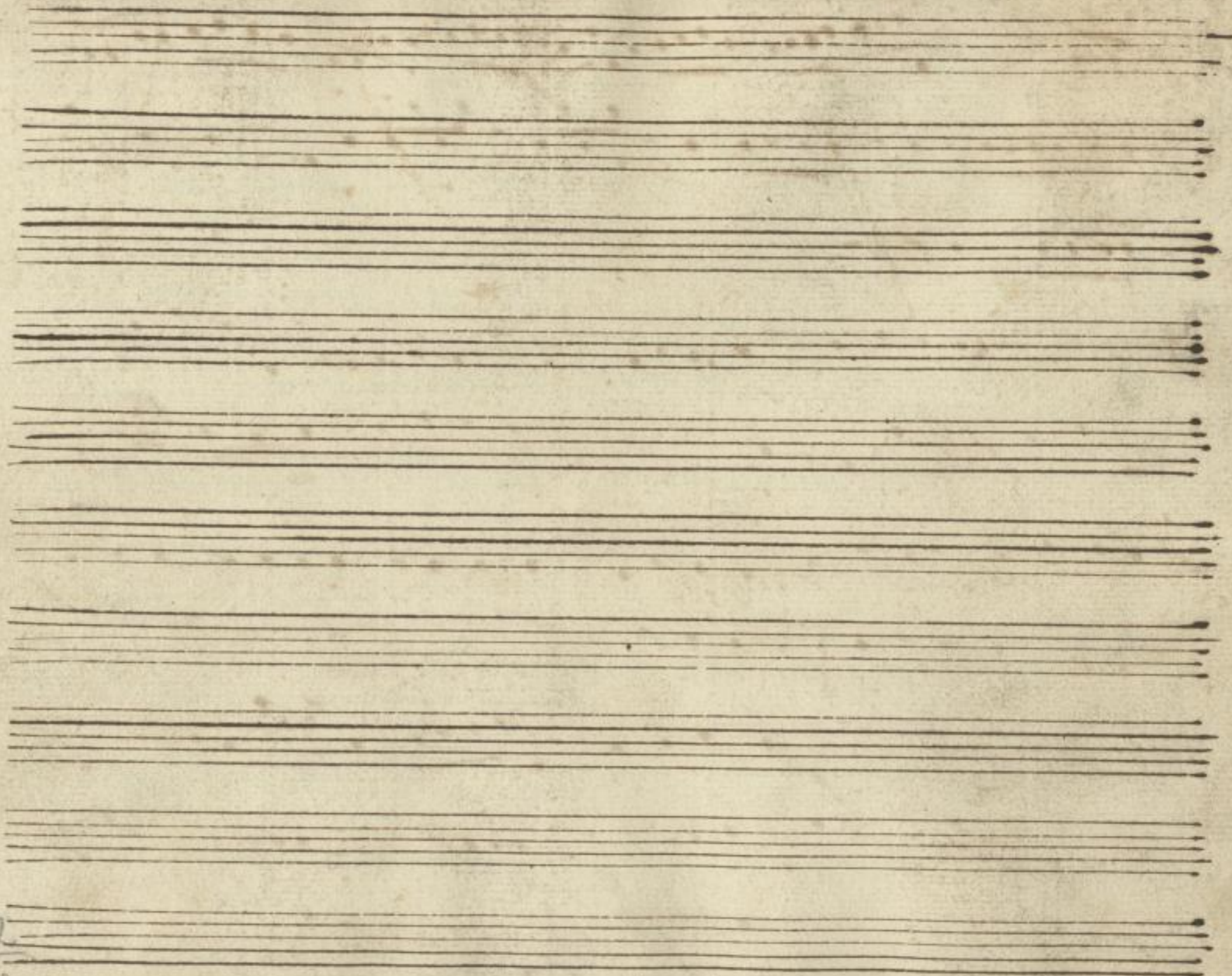
45

Mus. 2452-F-2



Allegro

Handwritten musical score consisting of ten staves. The first three staves are in treble clef with a key signature of one sharp (F#) and a common time signature (C). The fourth staff is marked *Adagio* and is in bass clef with a key signature of one flat (Bb) and a common time signature (C). The fifth through seventh staves continue in bass clef with the same key signature and time signature. The eighth staff is marked *Allegro* and is in treble clef with a key signature of one sharp (F#) and a 3/4 time signature. The ninth and tenth staves continue in treble clef with the same key signature and time signature. The notation includes various note values, rests, and repeat signs.



Wass. 2452
F 2

4

VIOLINO PRIMO



Ms. 2452-7-2

5

4

Allegro $\text{G}^{\#}$ C

Handwritten musical score on ten staves. The first seven staves feature a complex, fast-paced melodic line with many sixteenth and thirty-second notes. The eighth staff is marked *Adagio* and shows a significant change in tempo and texture, with fewer notes and larger intervals. The final three staves continue the slower, more spacious melodic development.

Allegro $\text{G}^{\#}$ $\frac{3}{4}$

8

VIOLINO SECONDO



Ms. 2452-F-2

9

Allegro.

Adagio

Volti

Allegro

Handwritten musical score for a piece marked *Allegro*. The score is written on four staves in G major (one sharp) and 3/4 time. The first staff begins with a treble clef, a key signature of one sharp (F#), and a 3/4 time signature. The music consists of a series of eighth and sixteenth notes, with some triplets and slurs. The piece concludes with a double bar line and repeat dots. The paper shows signs of age, including some staining and foxing.

12

2

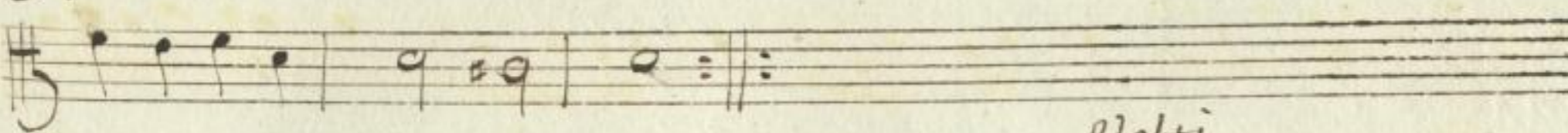
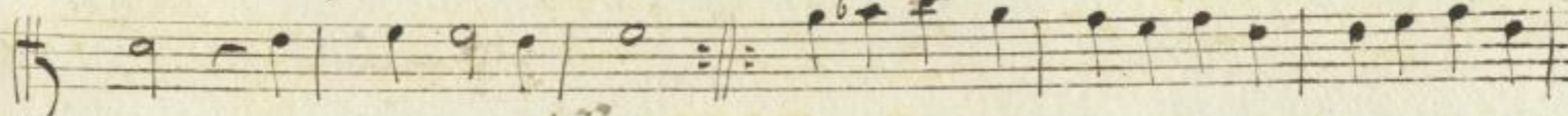
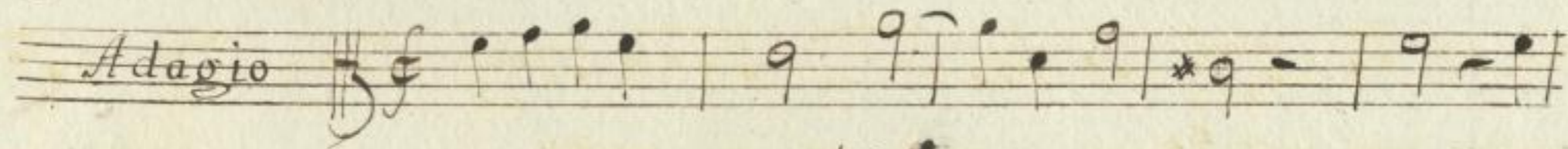
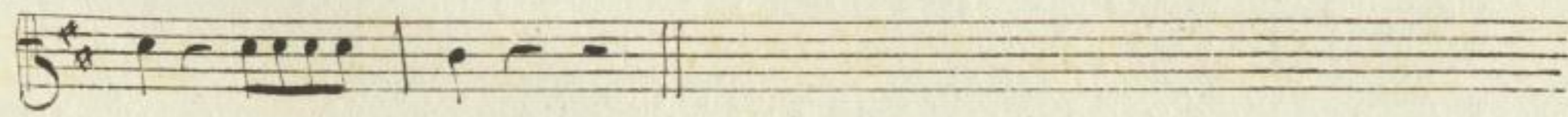
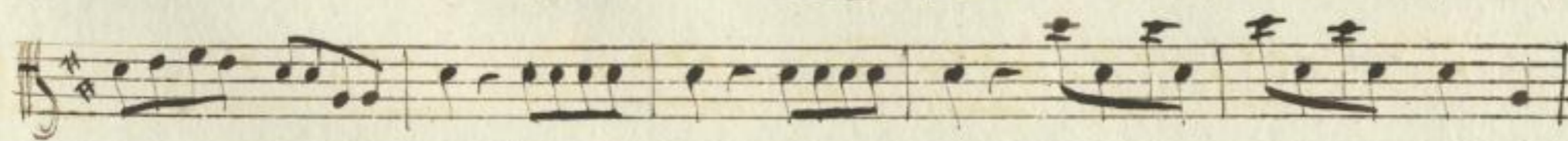
VIOLA

Mus. 2452-7-2

13

Allegro

Handwritten musical score for a piece marked *Allegro*. The score consists of ten staves of music in a single system. The notation includes treble clefs, a key signature of one sharp (F#), and a common time signature (C). The music features a variety of rhythmic patterns, including eighth and sixteenth notes, and rests. There are several dynamic markings, including 'f' (forte) and '6' (sexta). The piece concludes with a fermata over the final note of the tenth staff.



Volti

Allegro

The first system of the handwritten musical score consists of four staves. The top staff begins with the tempo marking "Allegro" in a cursive hand. The key signature is one sharp (F#) and the time signature is 4/4. The notation includes a variety of note values, including quarter, eighth, and sixteenth notes, as well as rests. A double bar line is present in the second measure of the second staff. The first staff ends with a fermata over a note.

Seven empty musical staves are arranged vertically, providing space for further musical notation.

16

2

The image shows a page of a musical score for Oboe Primo. It consists of eight horizontal staves. The second staff from the top contains the text "OBOE PRIMO" in a serif font, centered between two diagonal double-line slashes. The fifth staff from the top is almost entirely obscured by a large, dense, and messy scribble of black ink. The remaining staves are mostly blank, with some faint, illegible markings.

Man. 2452-7-2

17

Allegro


Fraue Tace

Handwritten musical notation on four staves. The first staff begins with the tempo marking *All.^o*, a treble clef, a key signature of one sharp (F#), and a 4/4 time signature. The notation consists of a single melodic line with various note values, including eighth and sixteenth notes, and rests. The second, third, and fourth staves continue the melodic line with similar rhythmic patterns and note values.

Four empty musical staves, each consisting of five horizontal lines, arranged vertically below the first four staves.

20
F. 2

2



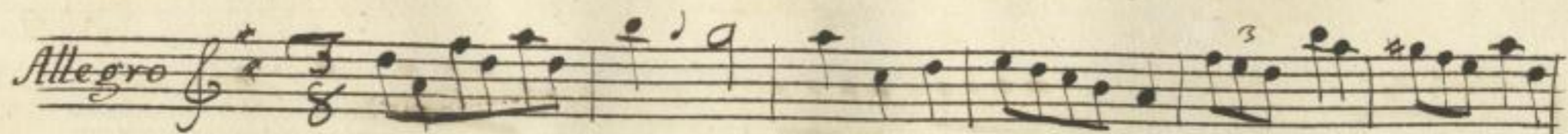
O B O E S E C O N D O

Mus. 2452-F-2

21

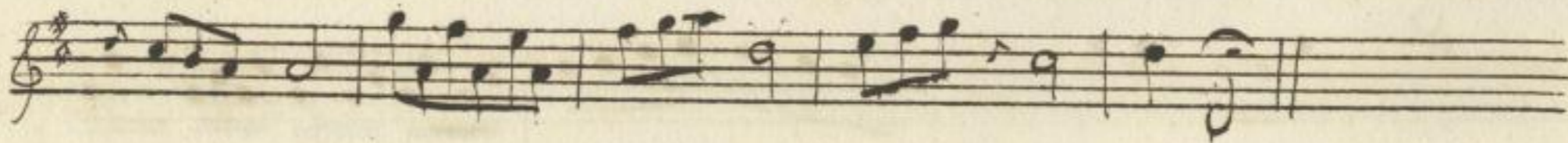
Allegro

Fraue Tace

Allegro 





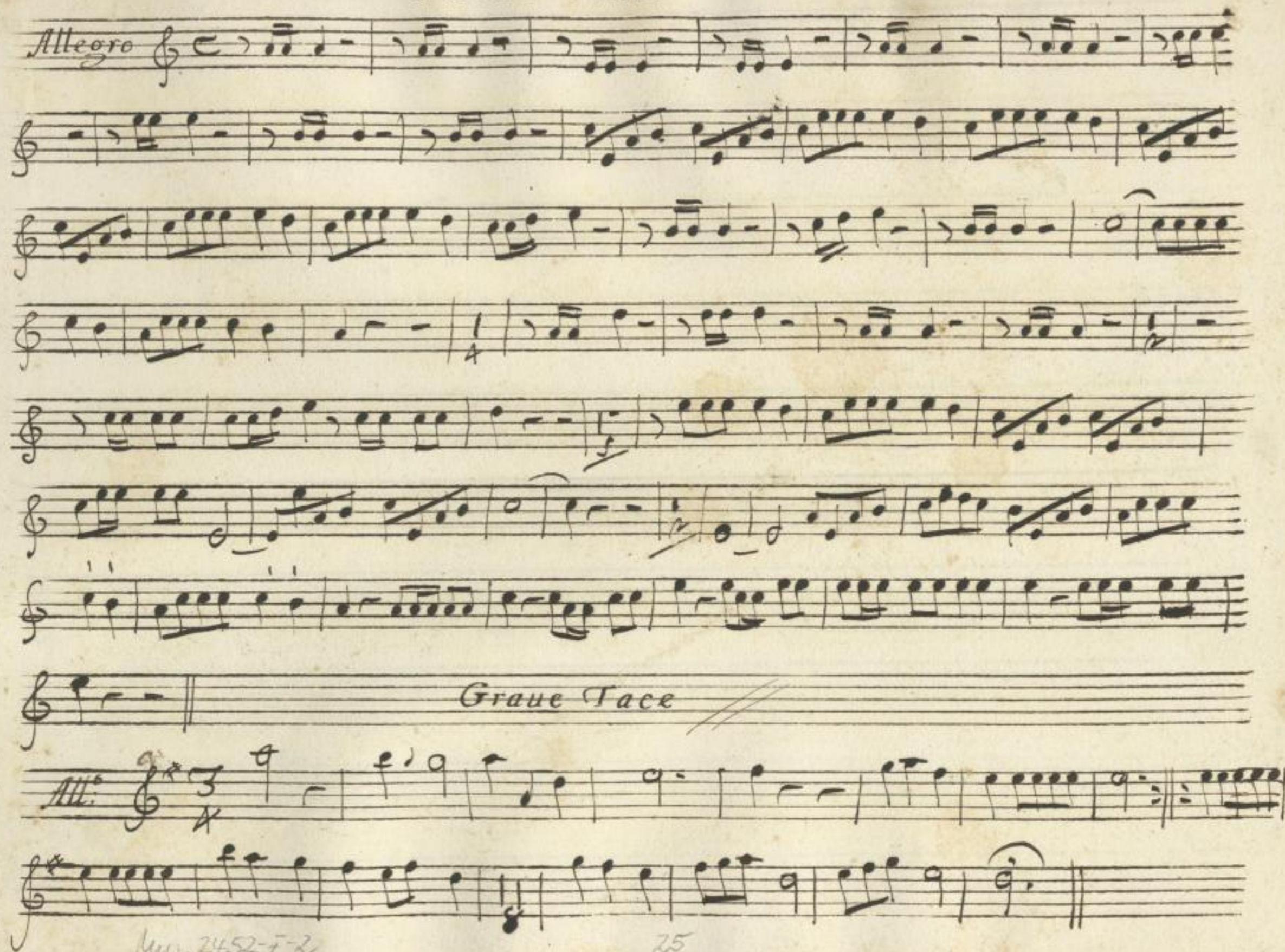




24

$\frac{3}{2}$

Corno Primo

Allegro The musical score is written on ten staves. The first staff begins with the tempo marking 'Allegro' and a common time signature. The notation includes various rhythmic values such as eighth and sixteenth notes, often beamed together. There are several dynamic markings, including accents and slurs. The score concludes with the instruction 'Grave Tace' on the eighth staff, followed by a double slash. The final two staves contain a new section marked 'All.' with a 3/4 time signature and a key signature of one sharp (F#).

Mus. 2452-7-2

25



2-5/26
F 2

Corno Secondo

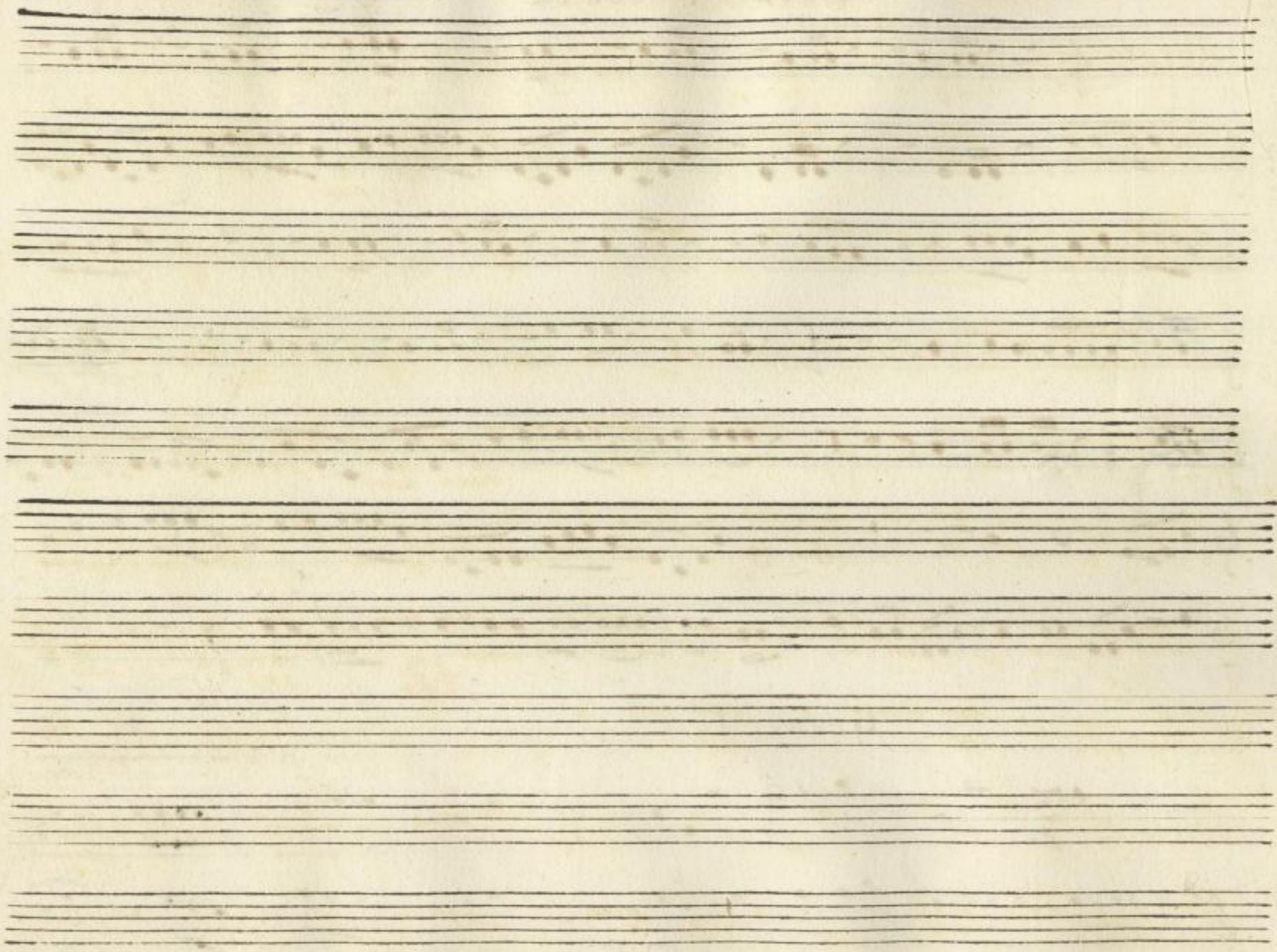
Allegro C

Graue Tace

Ad. C

Mus. 2452-7-2

27



28
F 2

Tromba Prima

Allegro $\text{G}^{\#}$ C

Traue Tace

Allegro G C

Mus. 2452-7-2 79



30
F 2

Tromba Seconda

Allegro &

ms. 2452-7-2

31

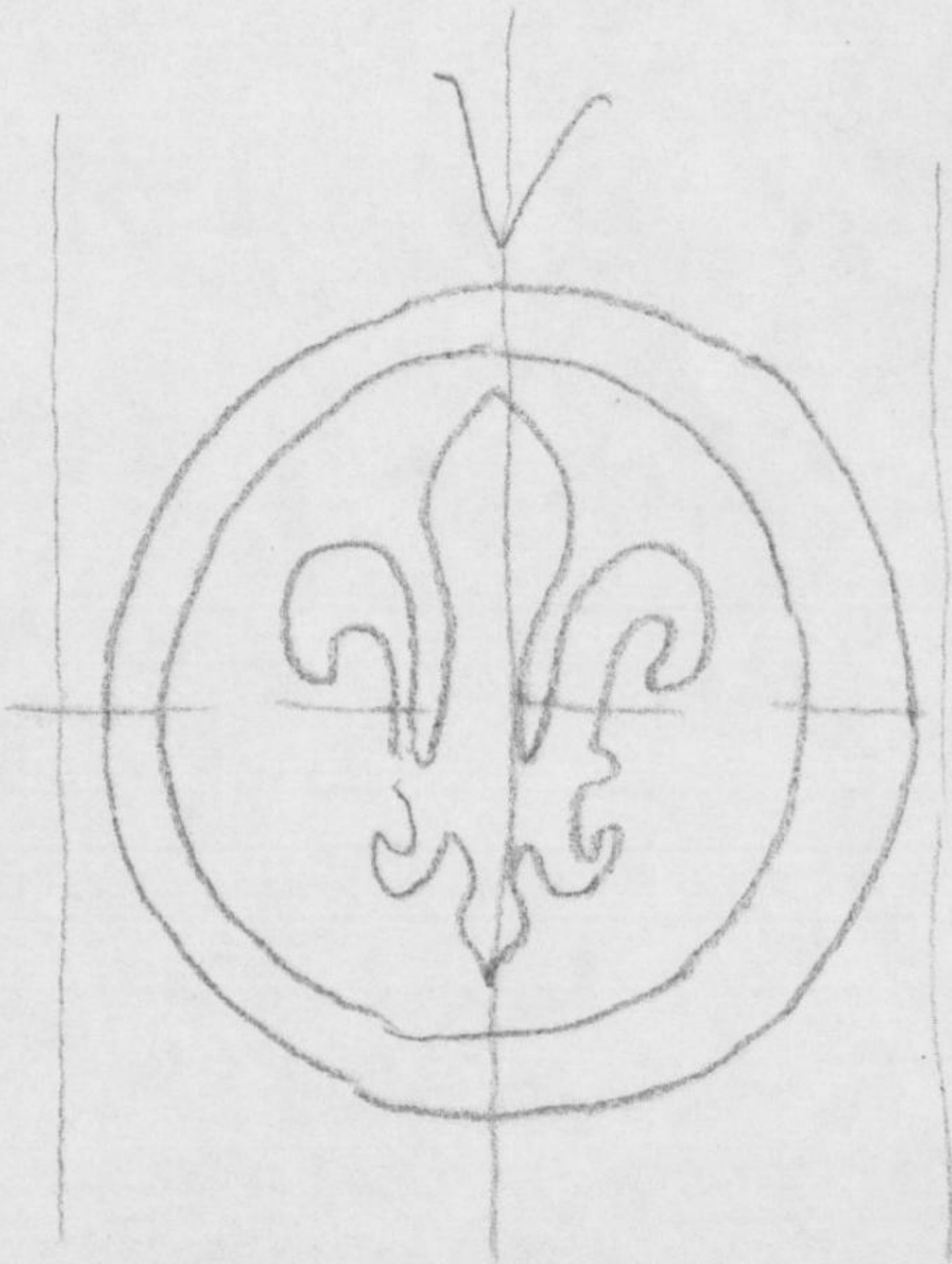
Faint handwritten text at the top of the page, possibly a title or page number.

The page contains ten sets of musical staves, each consisting of five horizontal lines. The staves are arranged vertically and are currently empty of any musical notation. The paper is aged and shows some staining and discoloration.

Handwritten numbers at the bottom center of the page: "1752" above "F 2" and "32" to the right.

D-DI Mus. 2452-F-2

p. 19/20



p. 23/24

