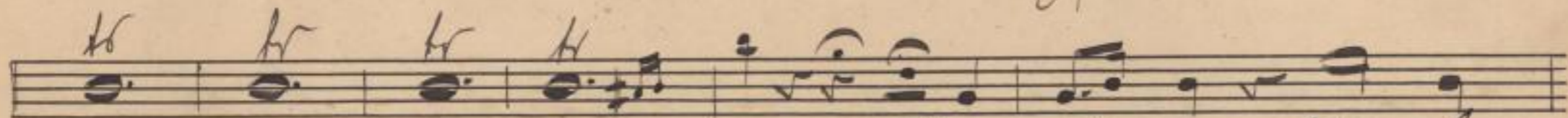


II Act

No 5 Introduction

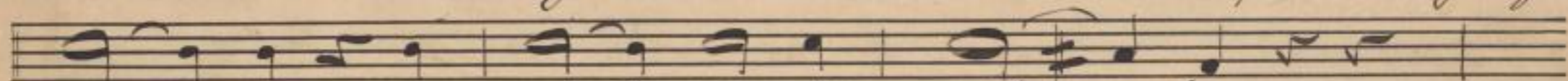
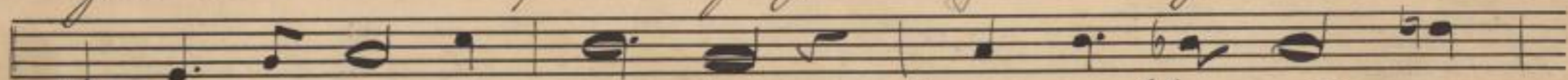
Moderato ma con anima



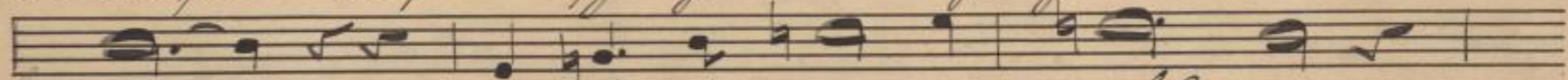
Ihr Kömmer soßt die



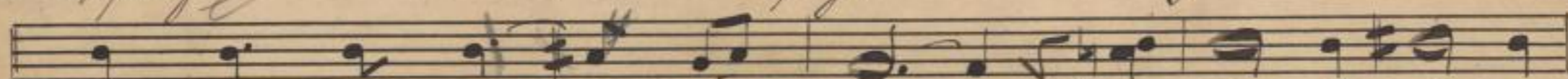
Künste! das selbne Ewighaus von auf Komers pilgeren

Gemeinde wolle sein ^{die} ja - ja die Lese

in dießer Falten - pflanzten Baumy gelbner Kömmer -



Scheintraufe in Wessers pfeifen Linsten



ziest soß die tr - yal sie dem Ewighaus ist ja