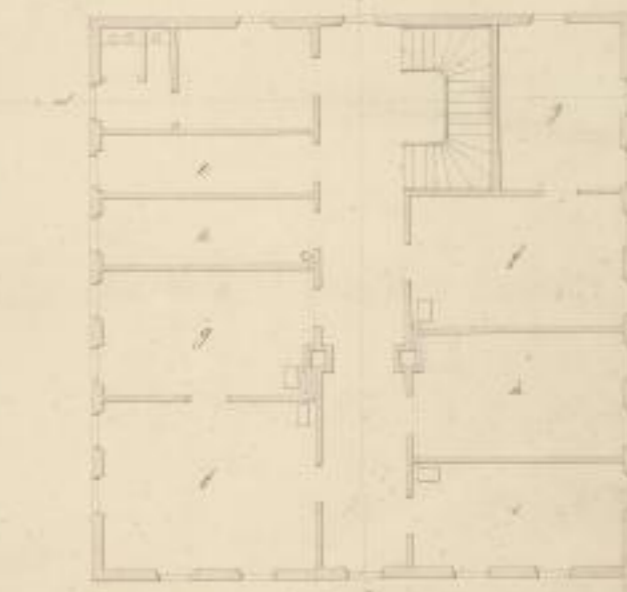
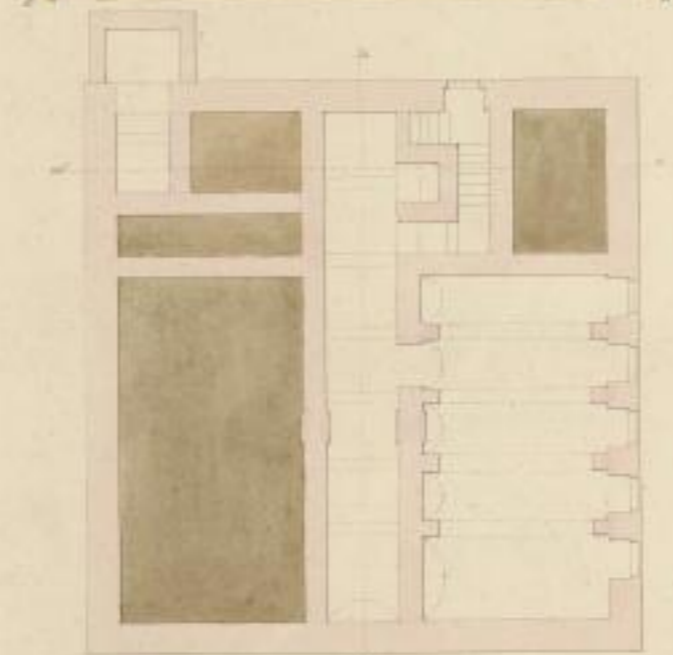
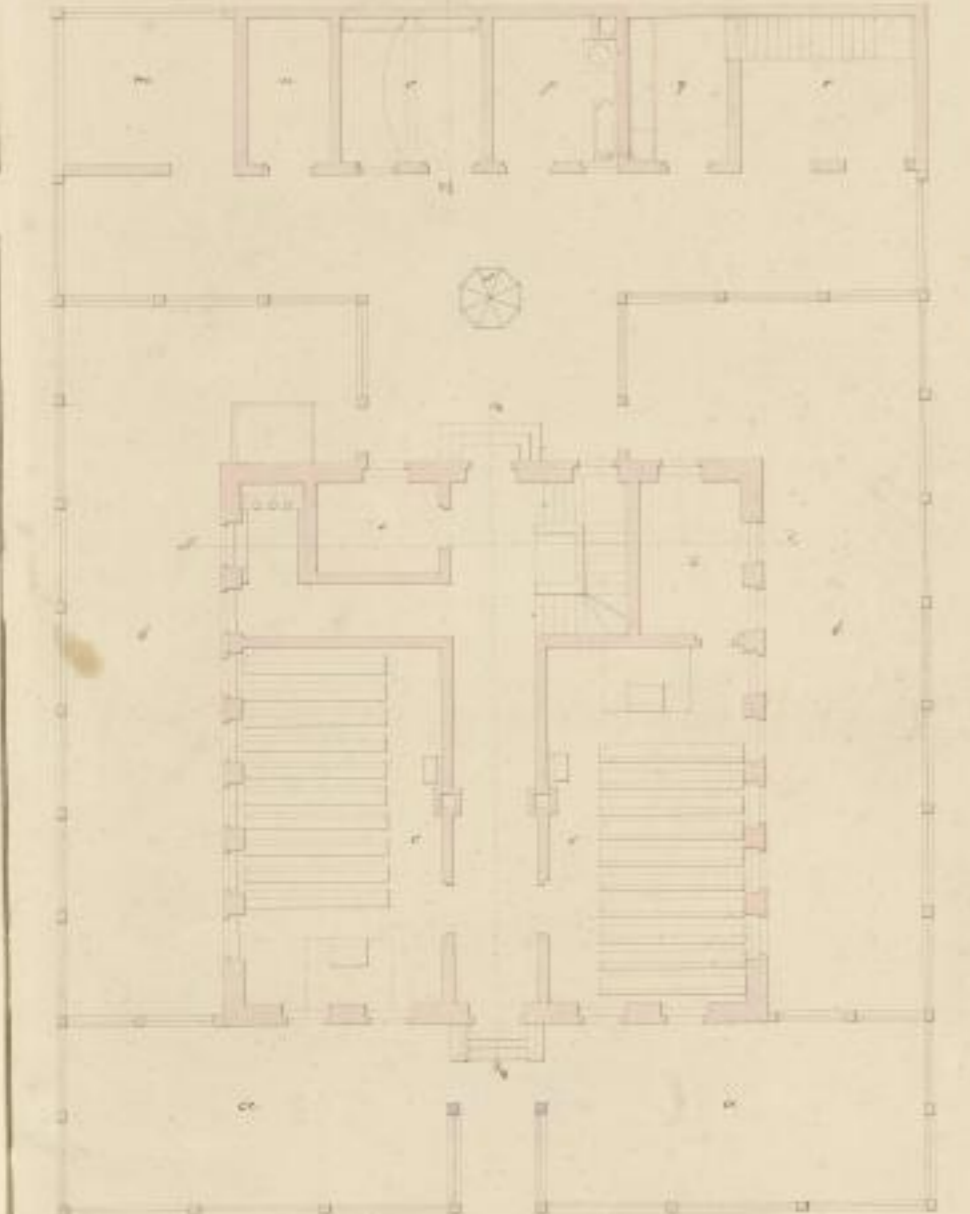
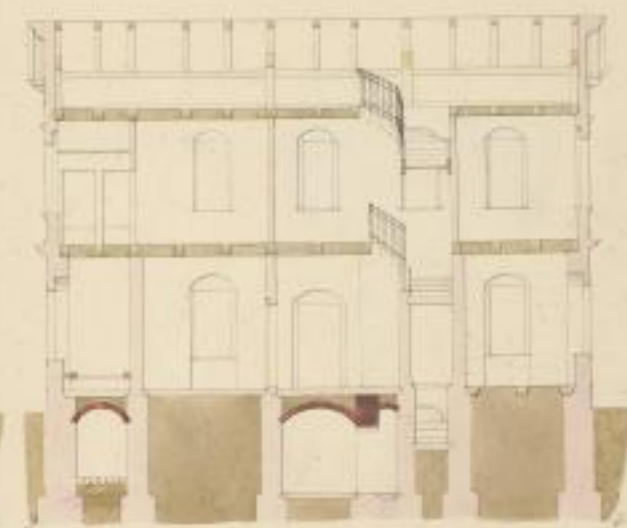
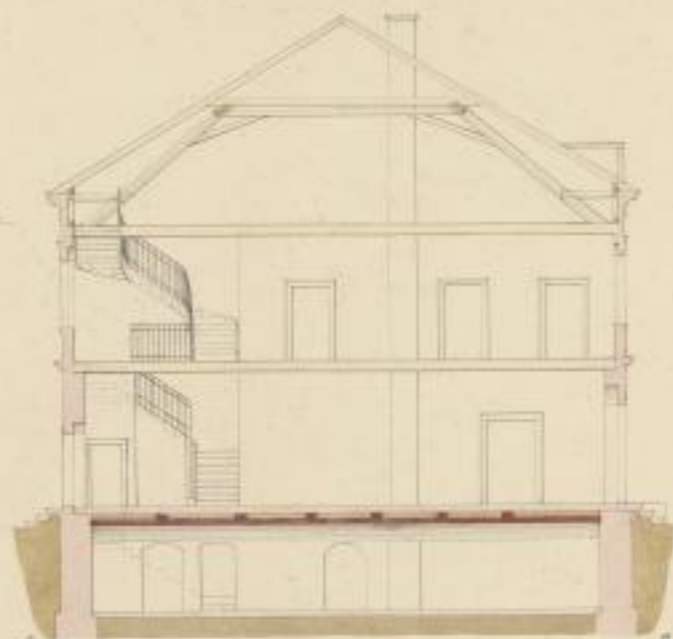


Entwurf zu einem  
Schulgebäude



- |                          |                       |                 |                  |                |
|--------------------------|-----------------------|-----------------|------------------|----------------|
| a. Spielplatz            | d. Holz- u. Holzlager | e. Gastzimmer   | n. Schweinestall | r. Holzgarnier |
| b. Alt. Gymnasialgebäude | f. Holzstube          | h. Herdinstube  | o. Hühnerstall   | s. Kuhstall    |
| c. Schulstube            | g. Bibliothek         | k. Speisekammer | p. Hühnerhaus    | t. Hühnerhaus  |
| q. Bibliothek            | l. Küche              | m. Längstafel   | q. Hühnerhaus    |                |

C. J. Lüdge, 46