

Baugewerkschule
zu Chemnitz.
Obere Classe
1843-1844.

J
352-1



1508.

Universitäts- und
Landesbibliothek
Chemnitz

J.
352.
I.
nr. 7352-1

1508



SLUB

Wir führen Wissen.



TECHNISCHE UNIVERSITÄT
CHEMNITZ



Ausarbeitung
einer allgemeinen Aufgabe

ohne Beihilfe,

von der oberen Schüler-Class der Baugewerkschule zu Chemnitz

nr. 94 1843 - 44

*Die Aufgabe betrifft die Berechnung der ...
... auf einen ...
...
...
...
...*



SLUB

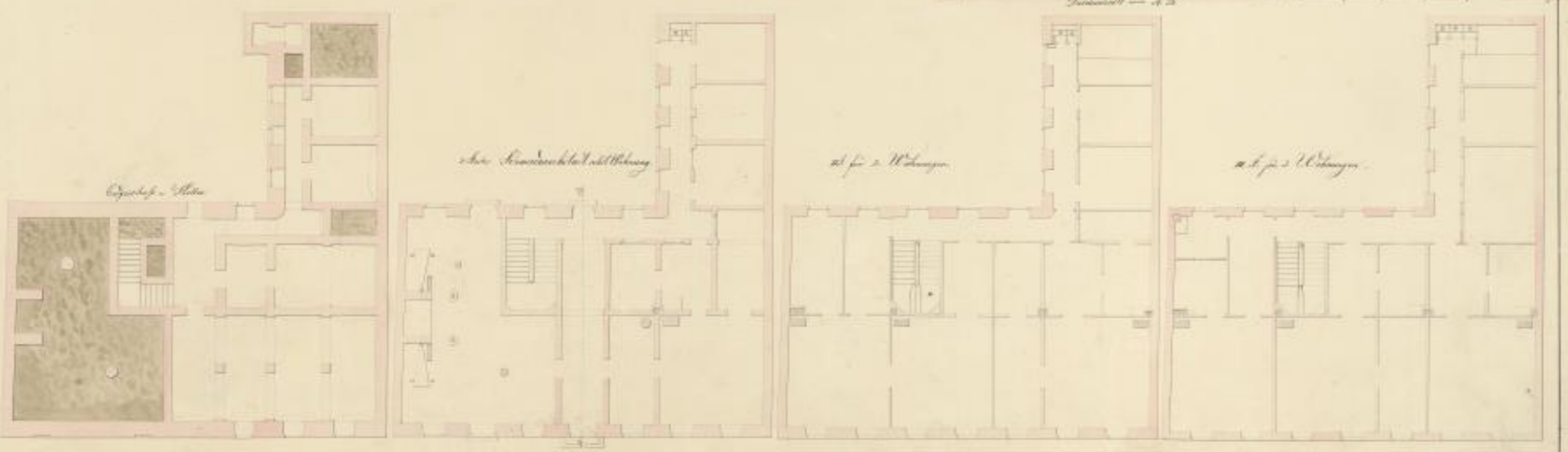
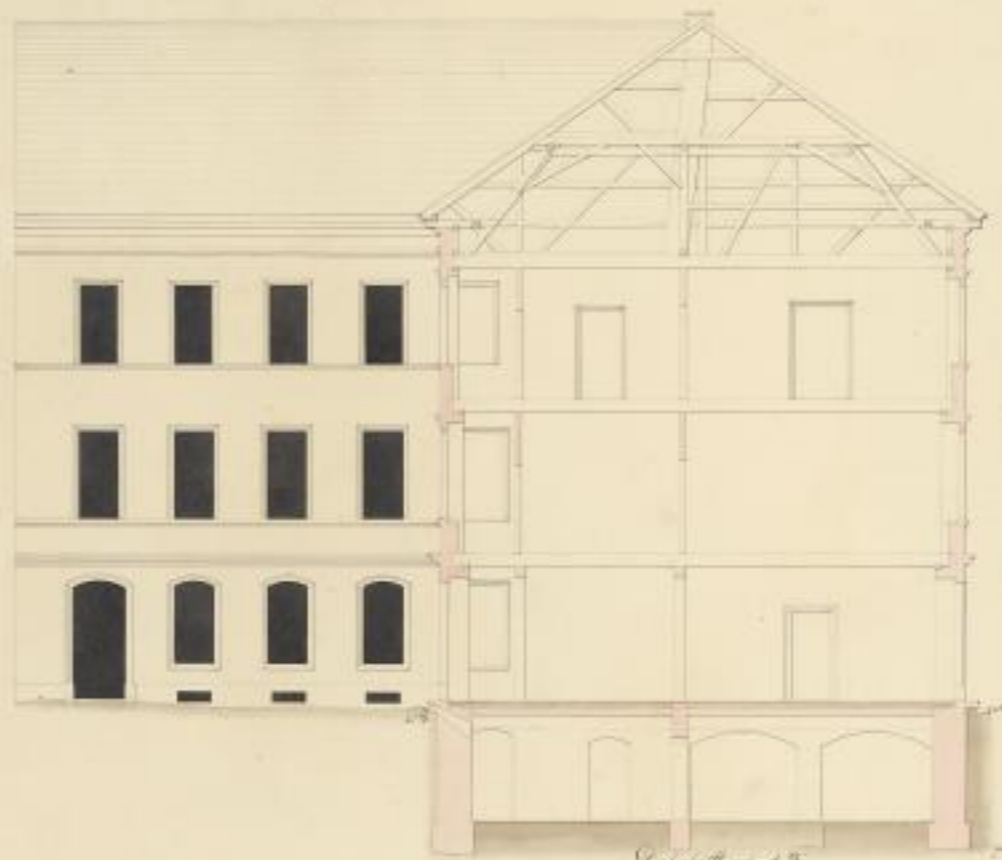
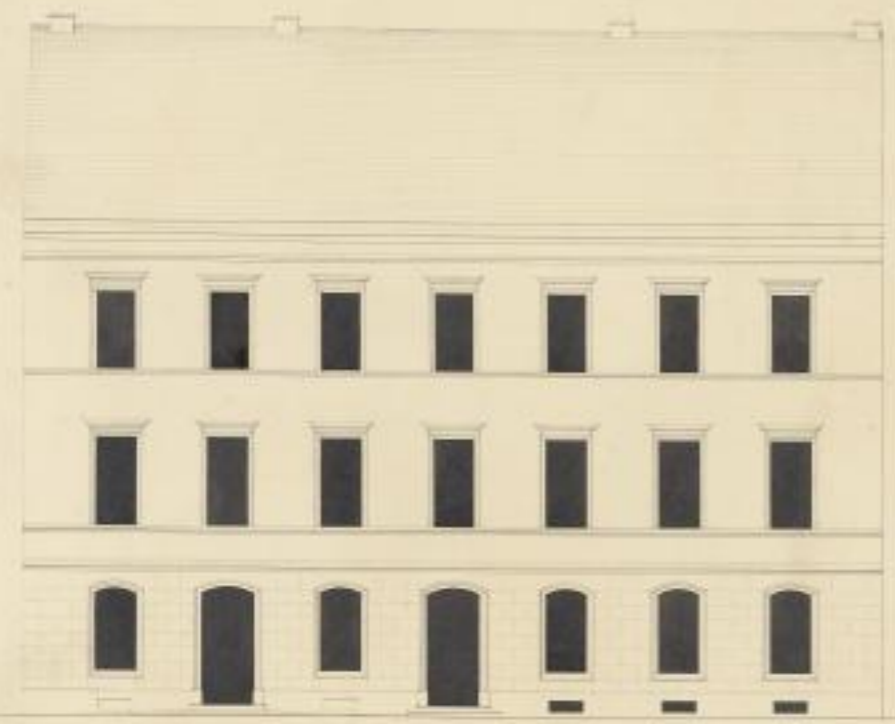
Wir führen Wissen.



TECHNISCHE UNIVERSITÄT
CHEMNITZ

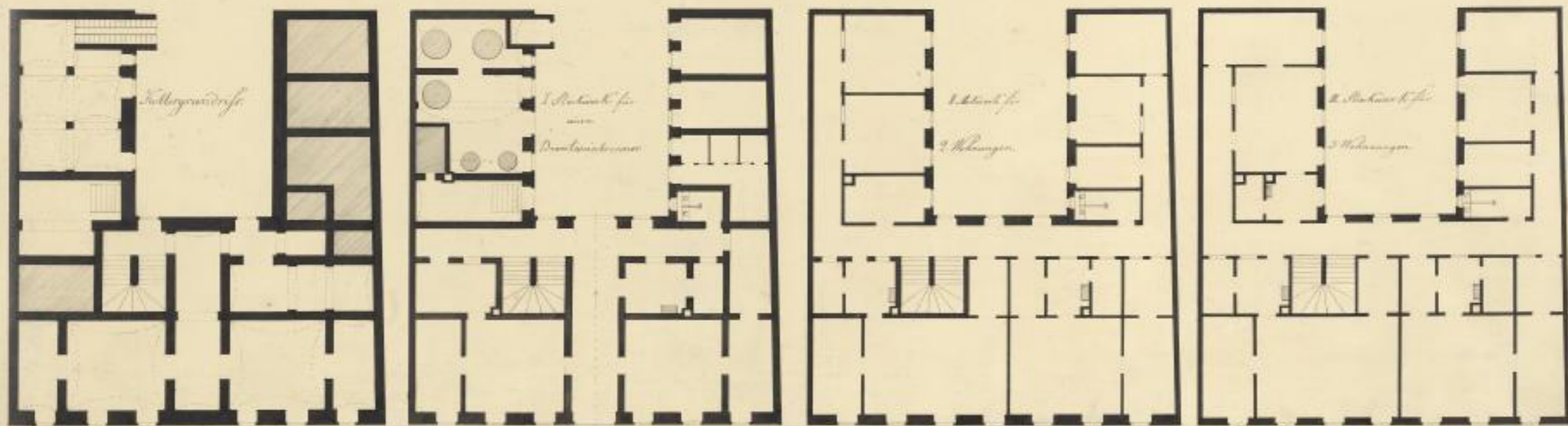
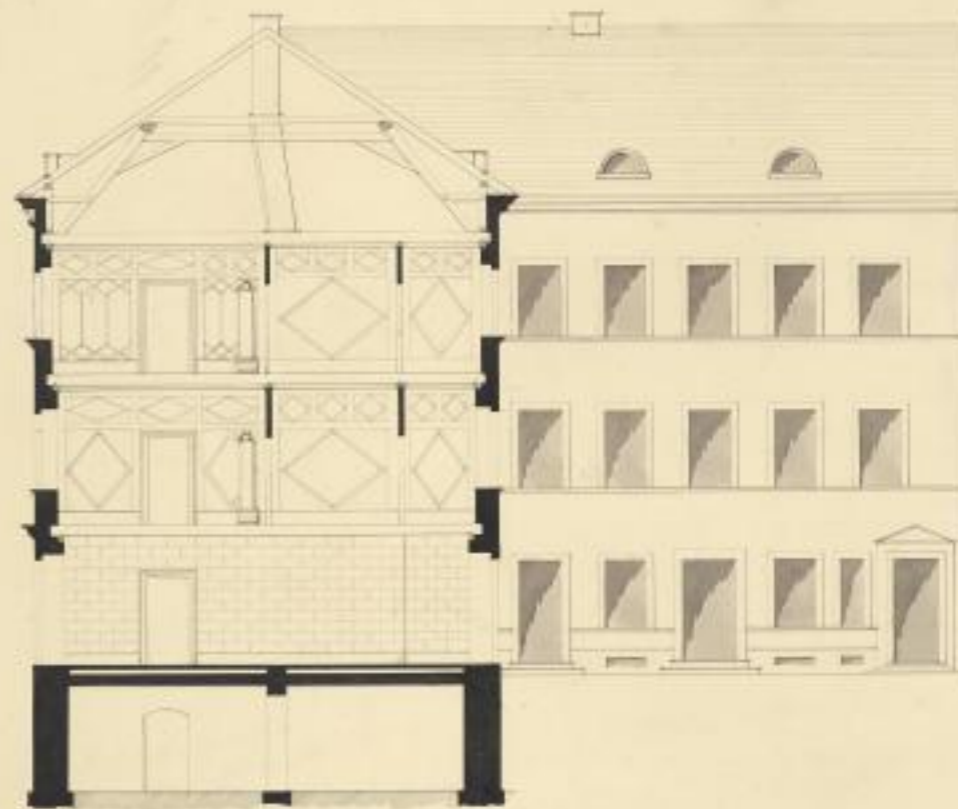
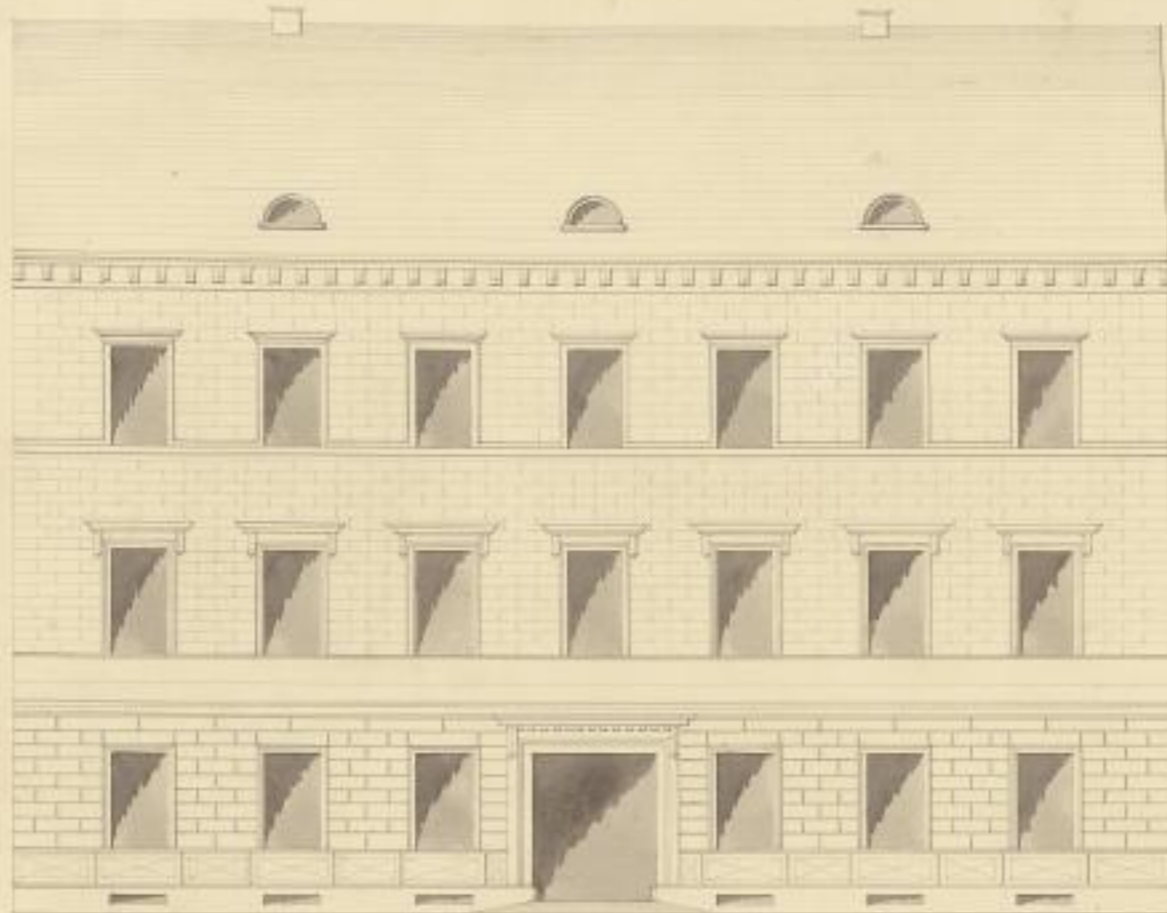


Grund- u. Aufrisse
zu einem städtischen Wohnhause



Architekt
1810

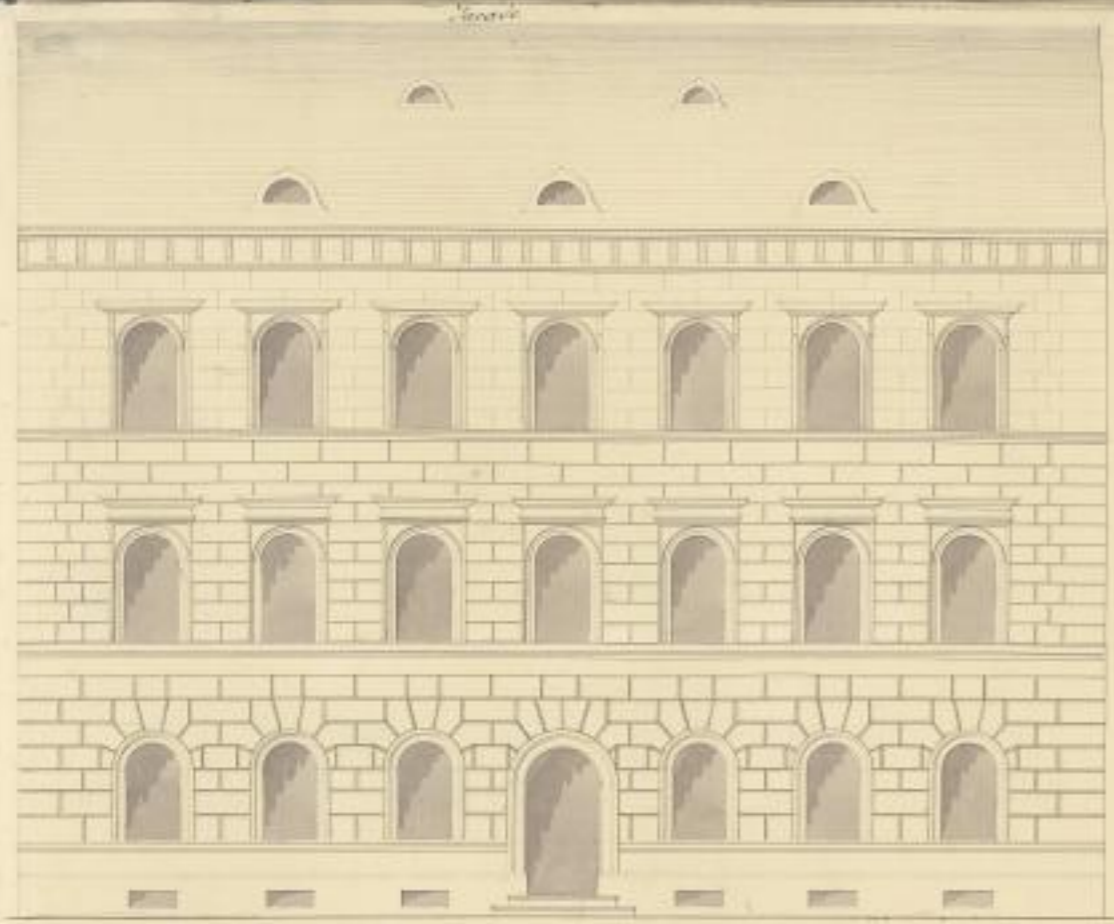




siehe auch 22. — gezeichnet v. Schinkel am 11. März 1844







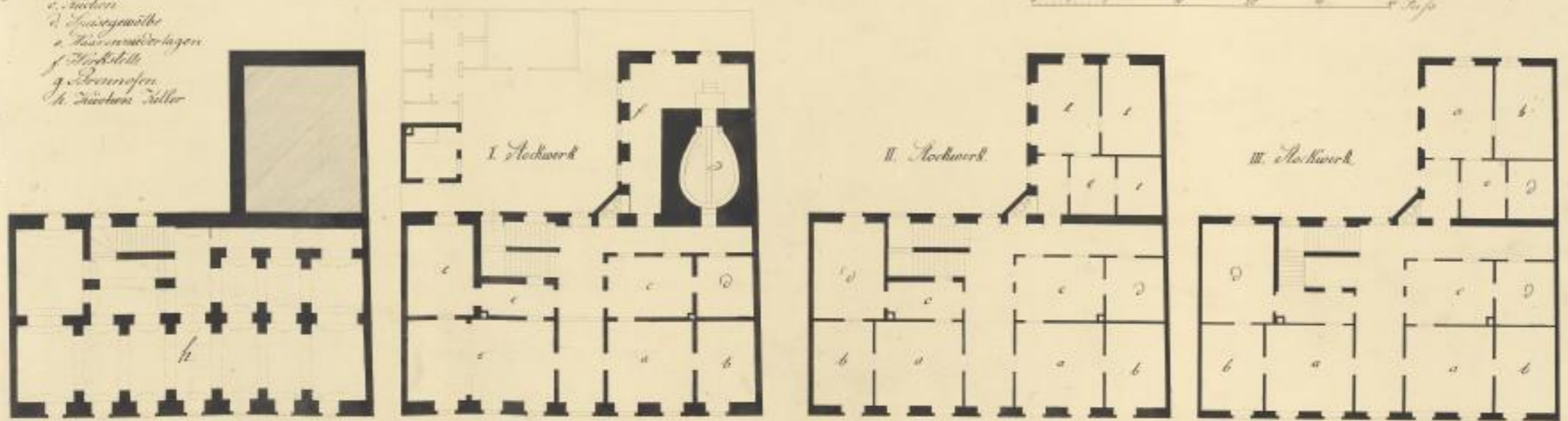
Grund, und Aufsicht
zu einem
Achtstücker Mithrasbause
für einen Tappet



Durchschnitt

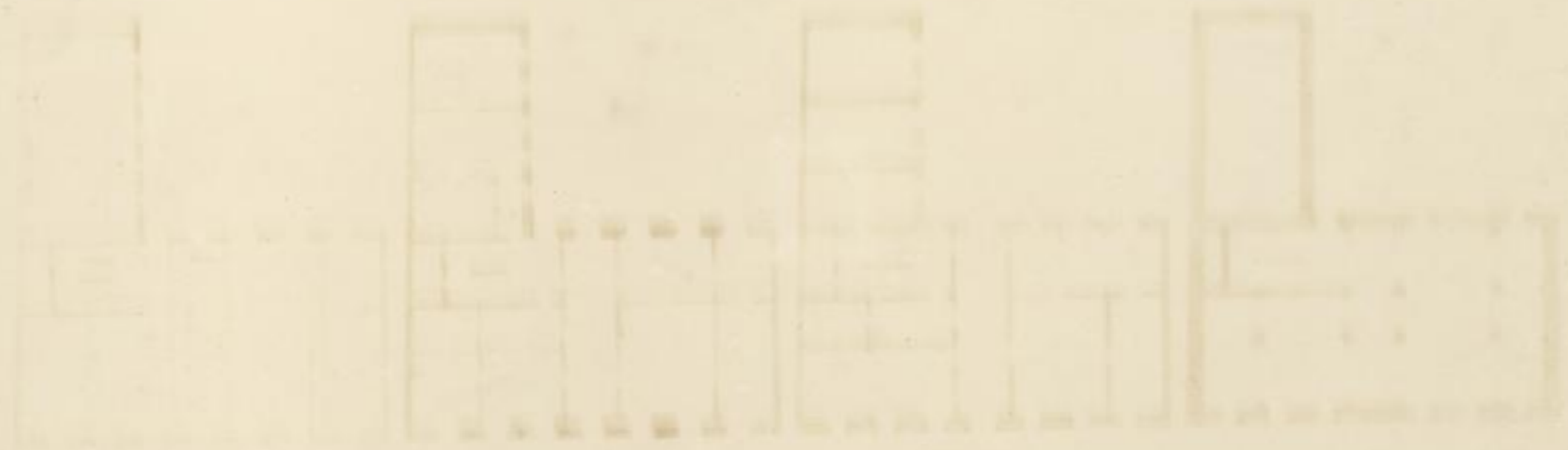


- a. Wohnzimmern
- b. Schlafzimmern
- c. Küchen
- d. Speisekammer
- e. Waschküche
- f. Heizstätt
- g. Brauerey
- h. Küchen Keller

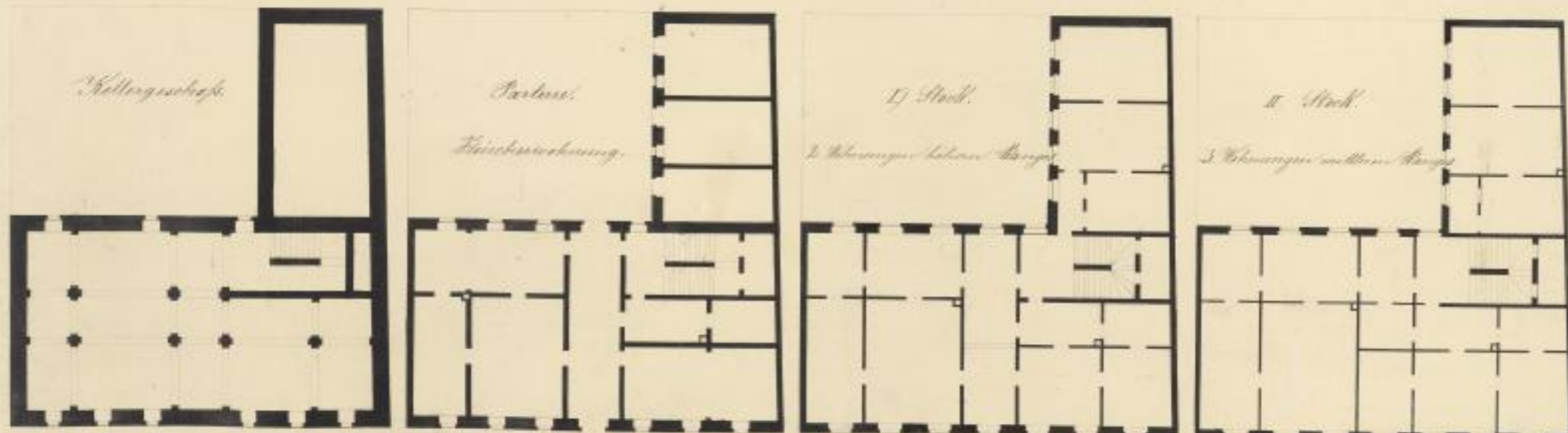
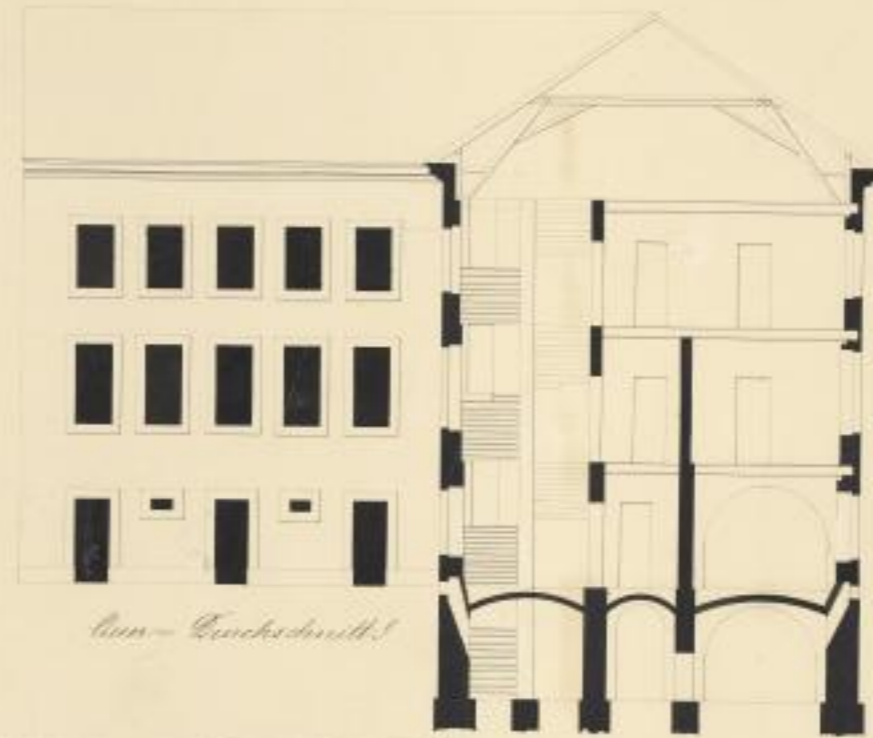


gezeichnet von J. Hermann Leipzig 1844

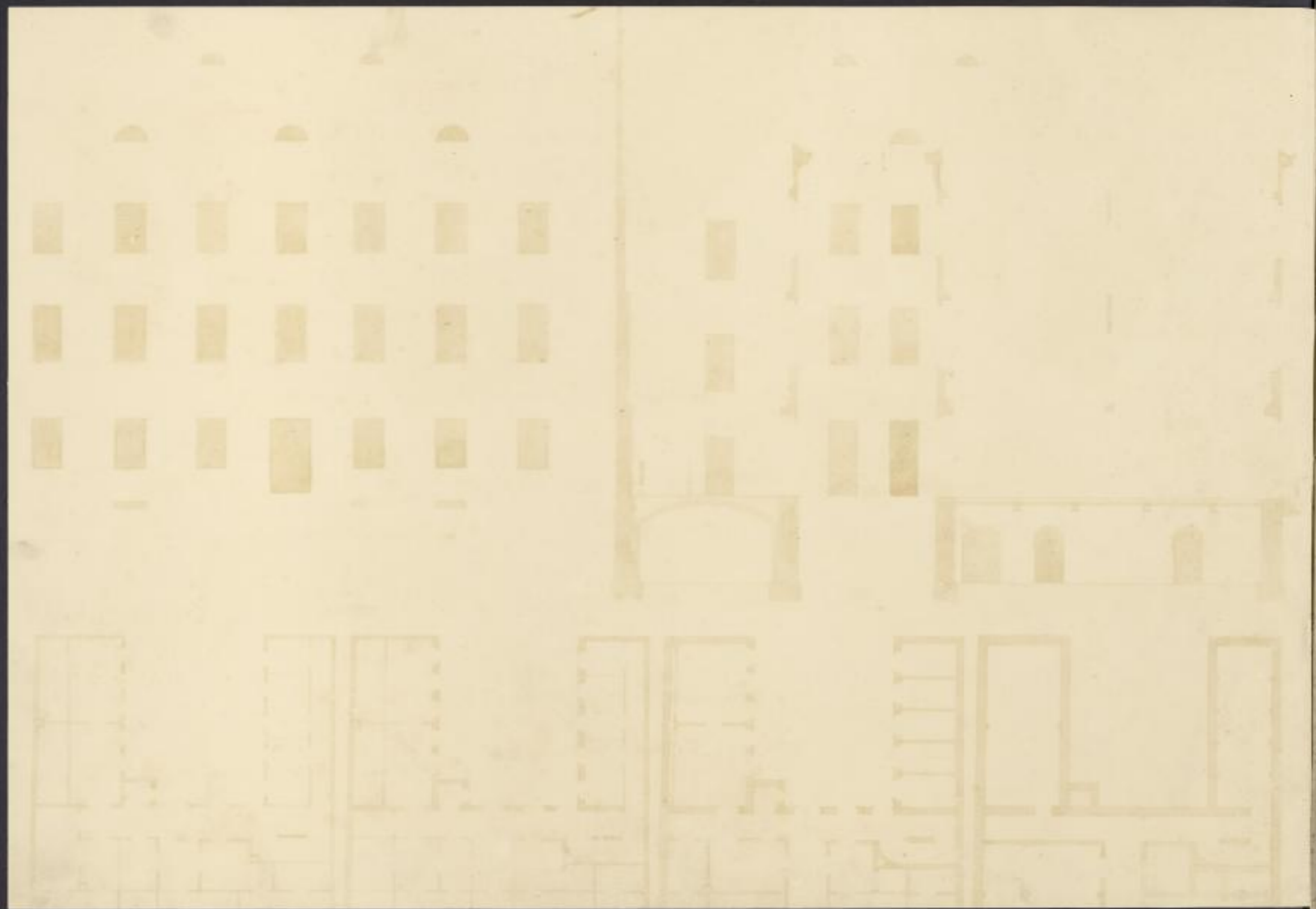
Verlag von G. B. Neumann, Neudamm
1844

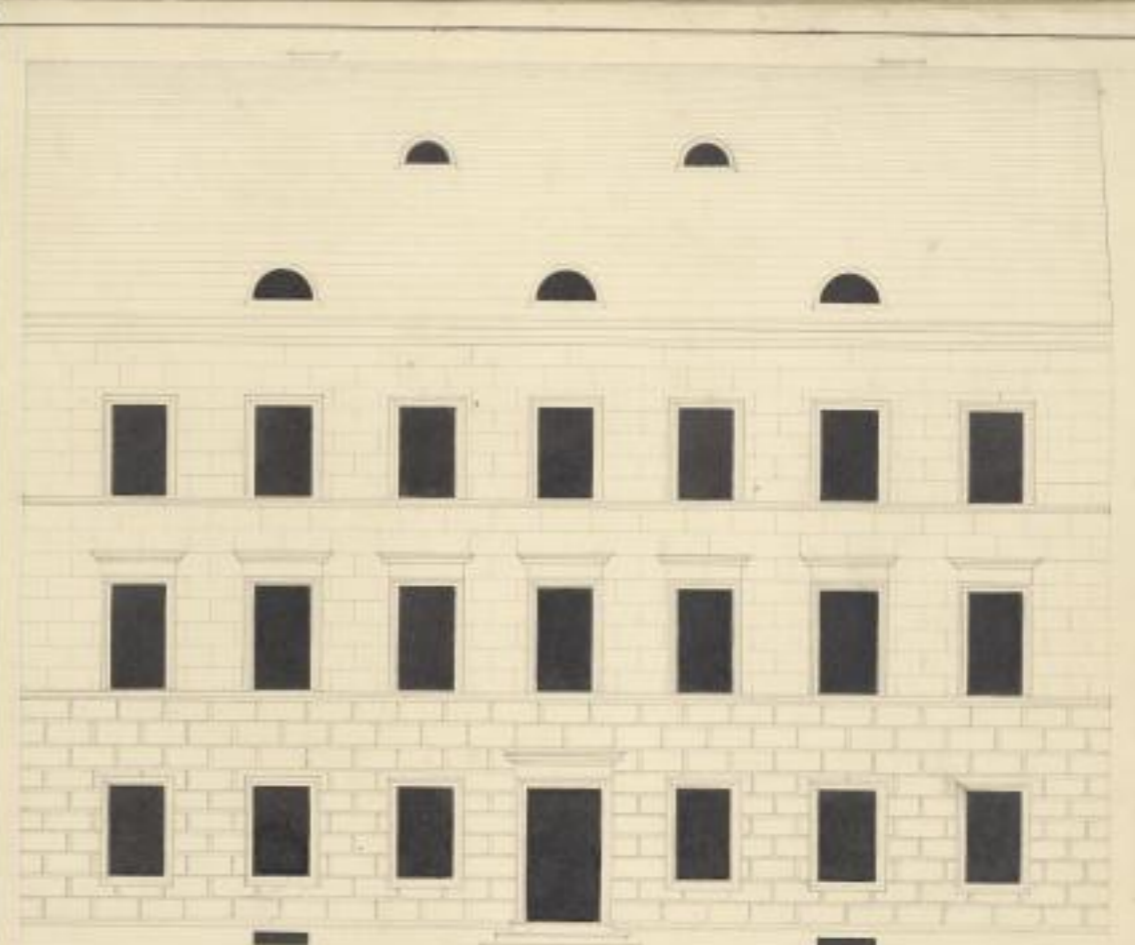
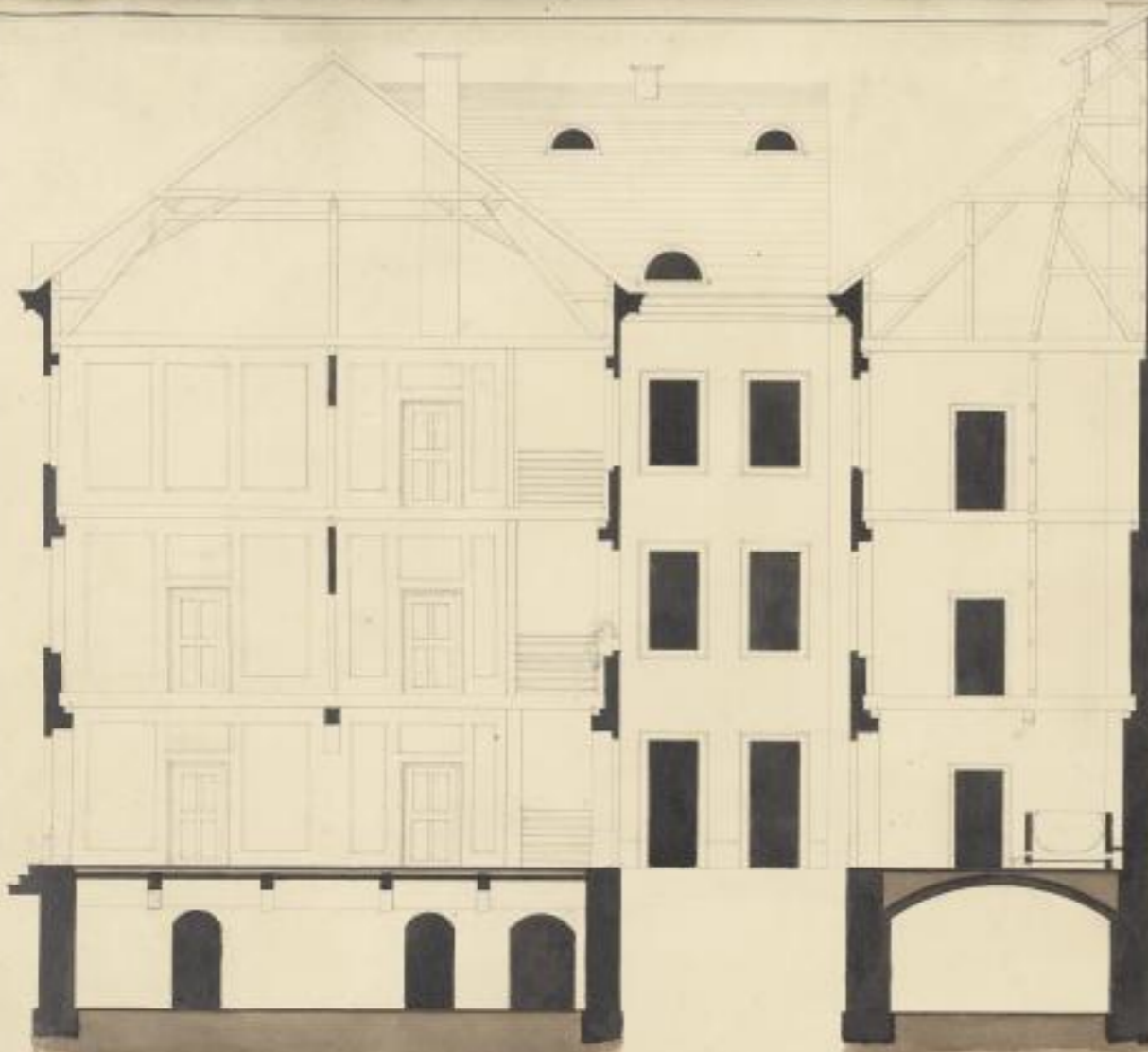


Grund & Aufsicht zu einem krieglichen Wohnhaus!

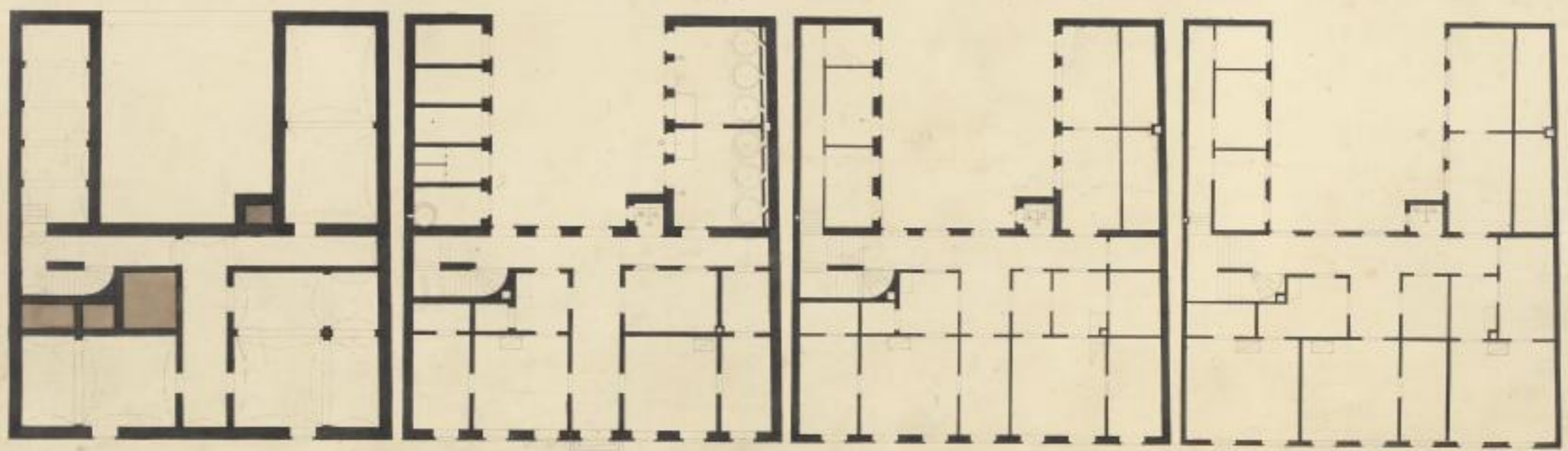


entworfen von A. P. Winkler





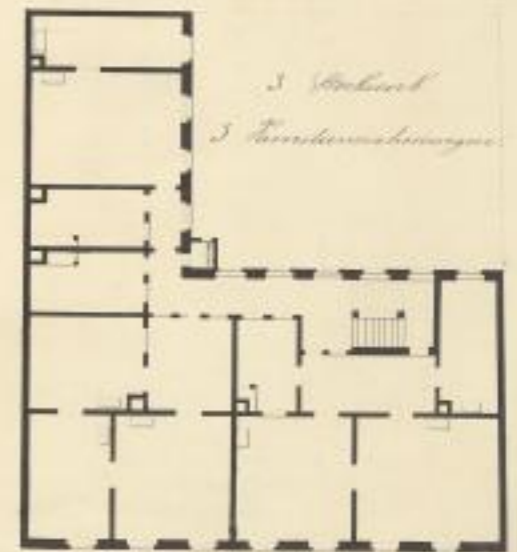
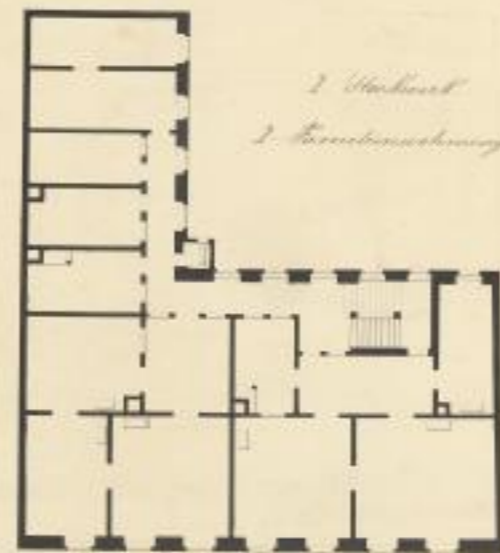
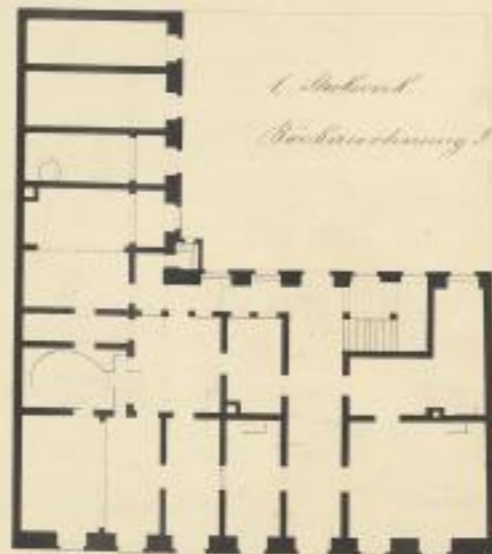
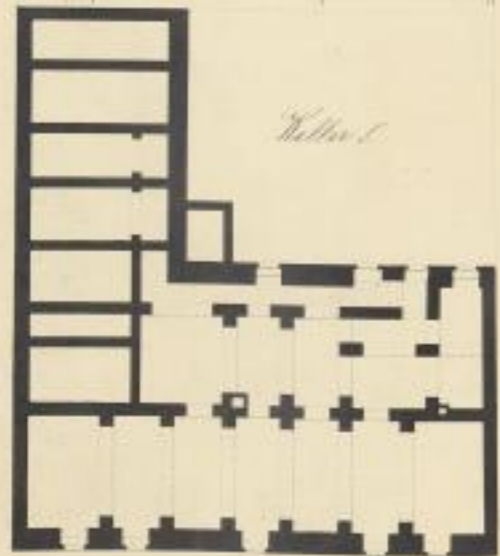
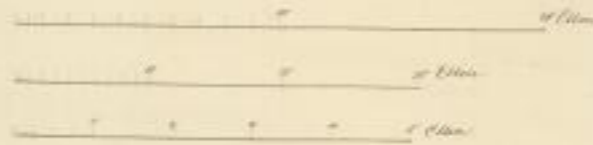
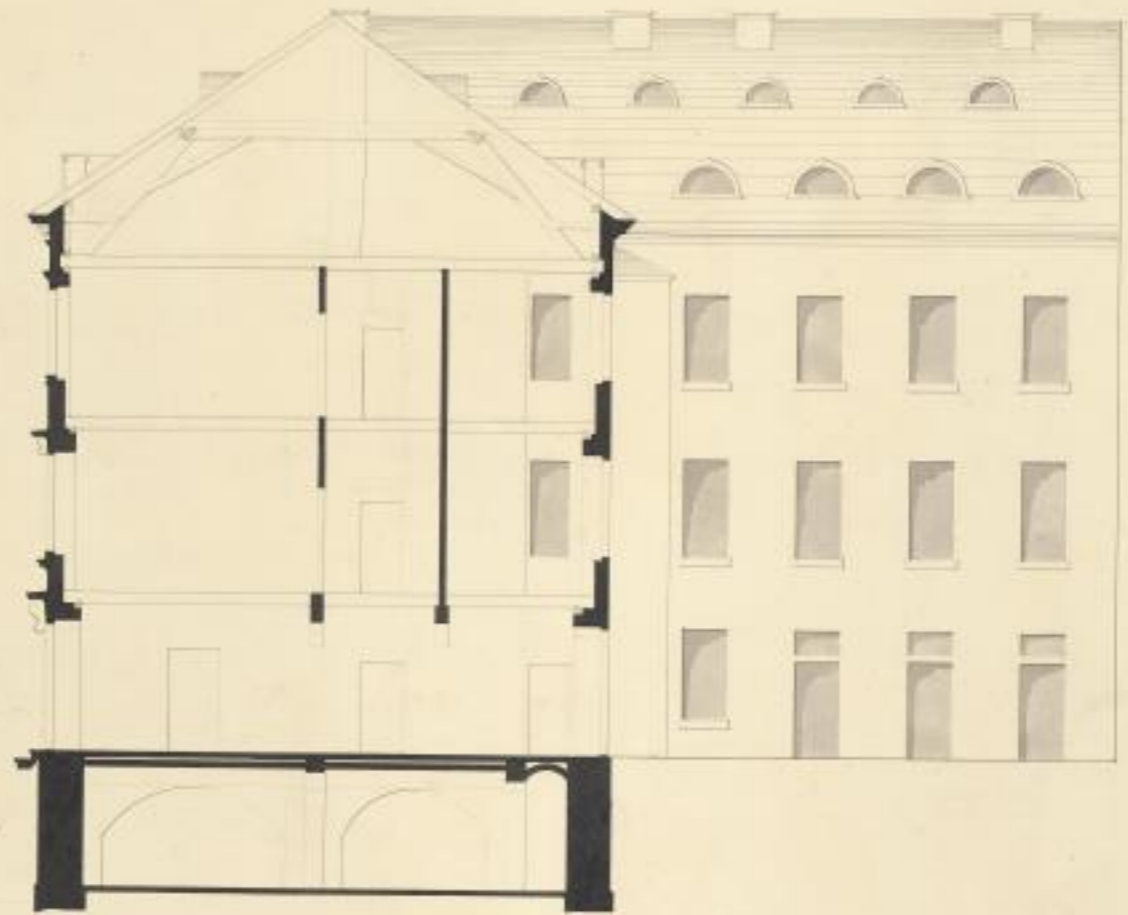
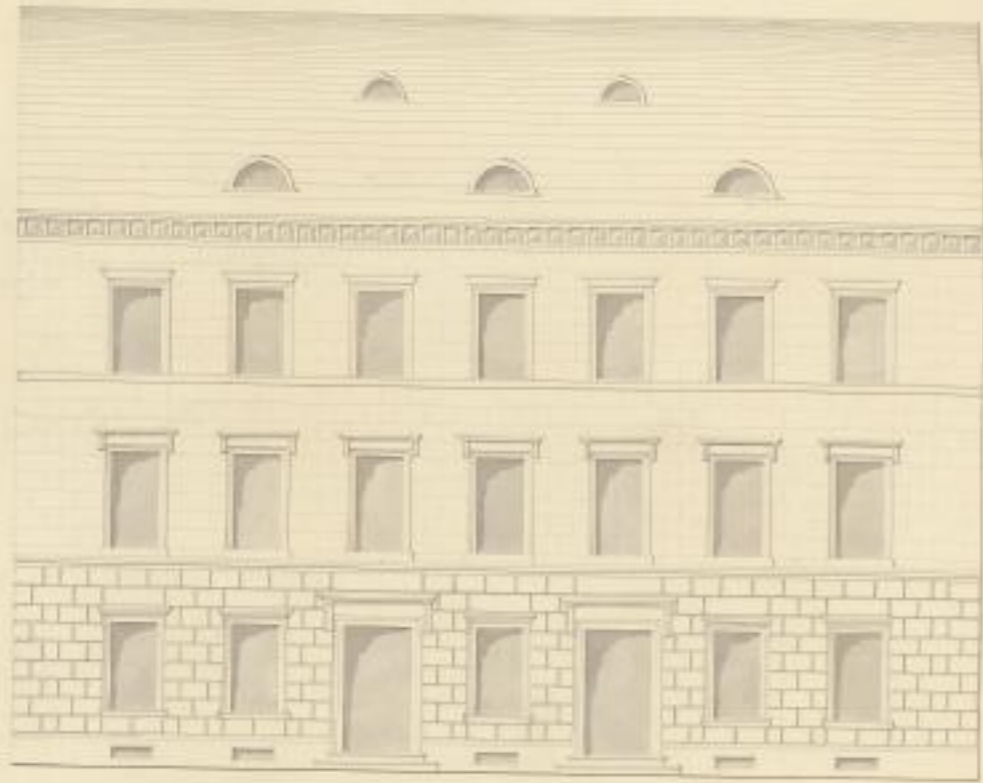
Grund und Aufriss zu einem Bürgerlichen Wohnhause
 umgewandelt zu einer Färberei.



Entw. von G. J. Natter u. Kumborg
 d. 1. März 1834



Entwurf zu einem Staatlichen Volkshause.



Gezeichnet von L. A. Krieger

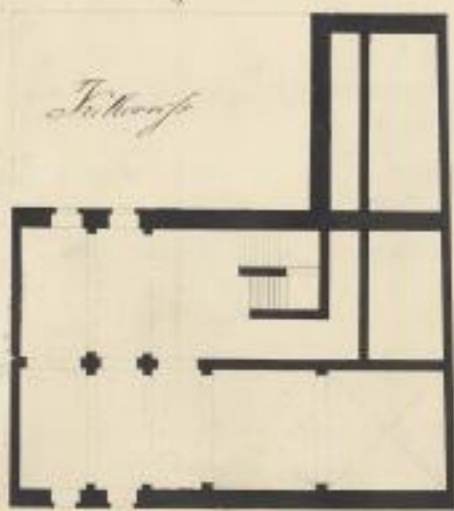
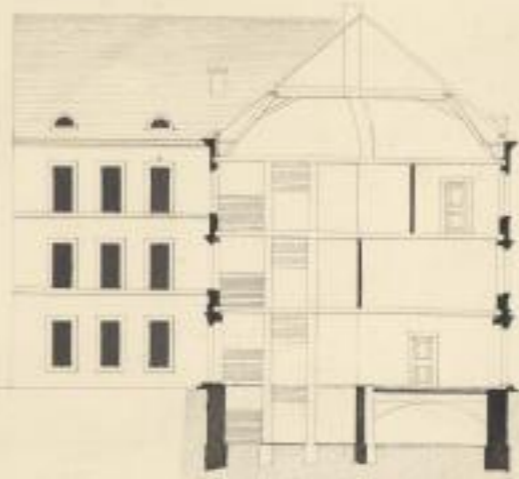
Handwritten text at the top of the page, possibly a title or page number, which is mostly illegible due to fading.



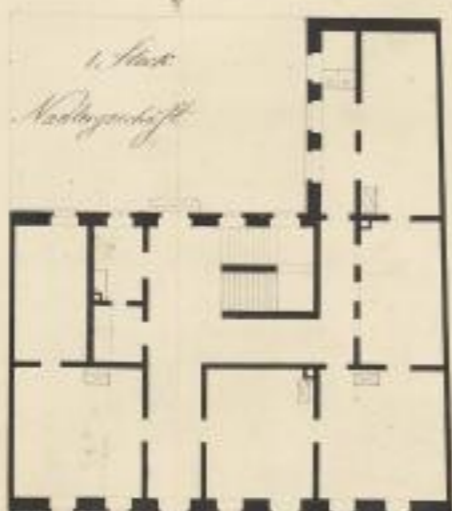
Grund und Aufrisse
bürgerlichen Wohnhaus



Durchschnitt nach der Linie A-B



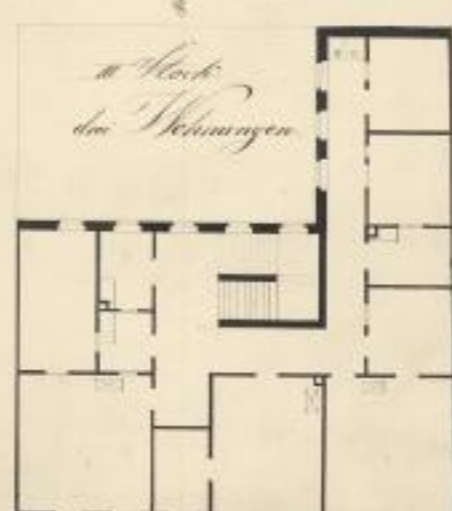
1. Stock



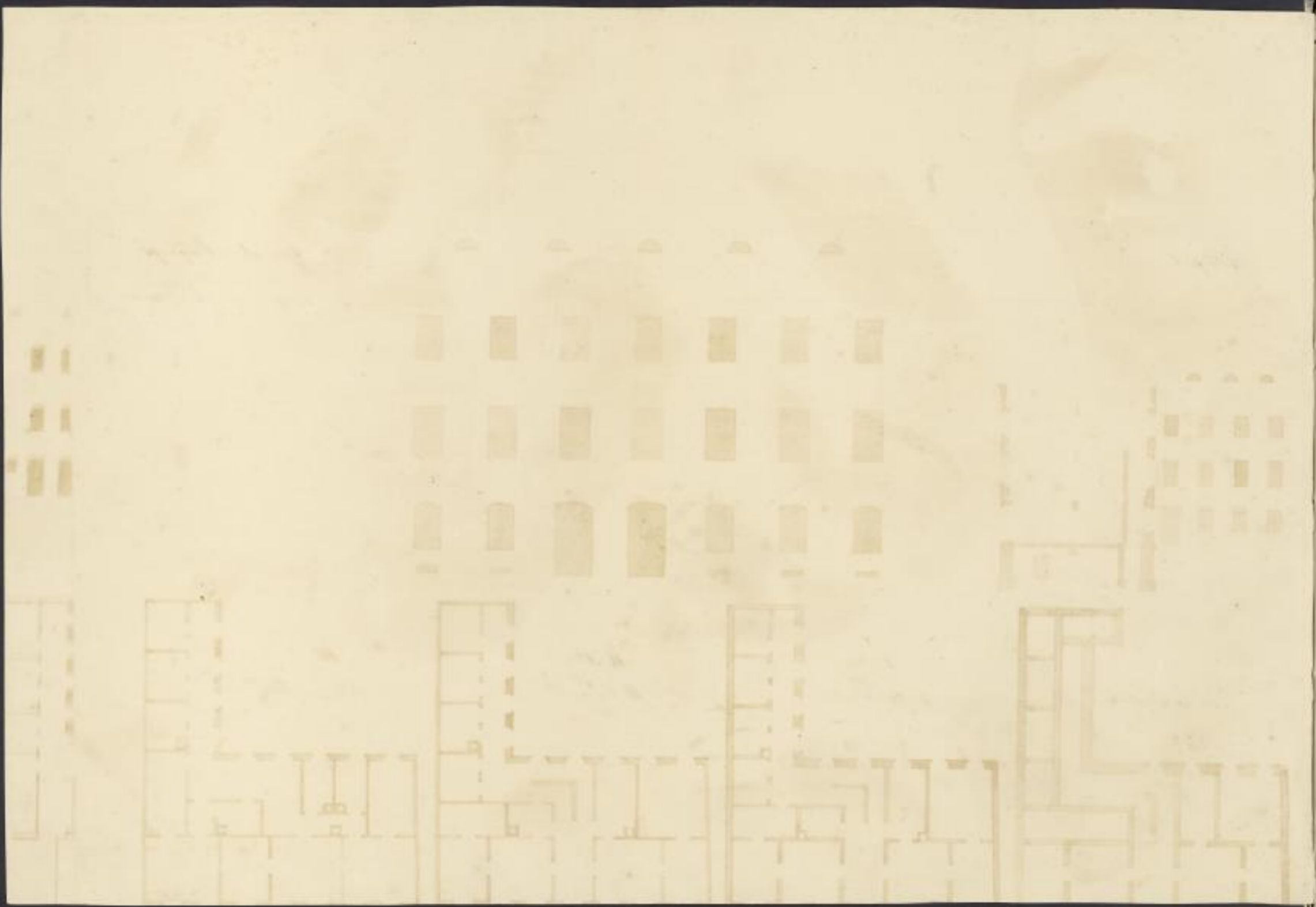
2. Stock



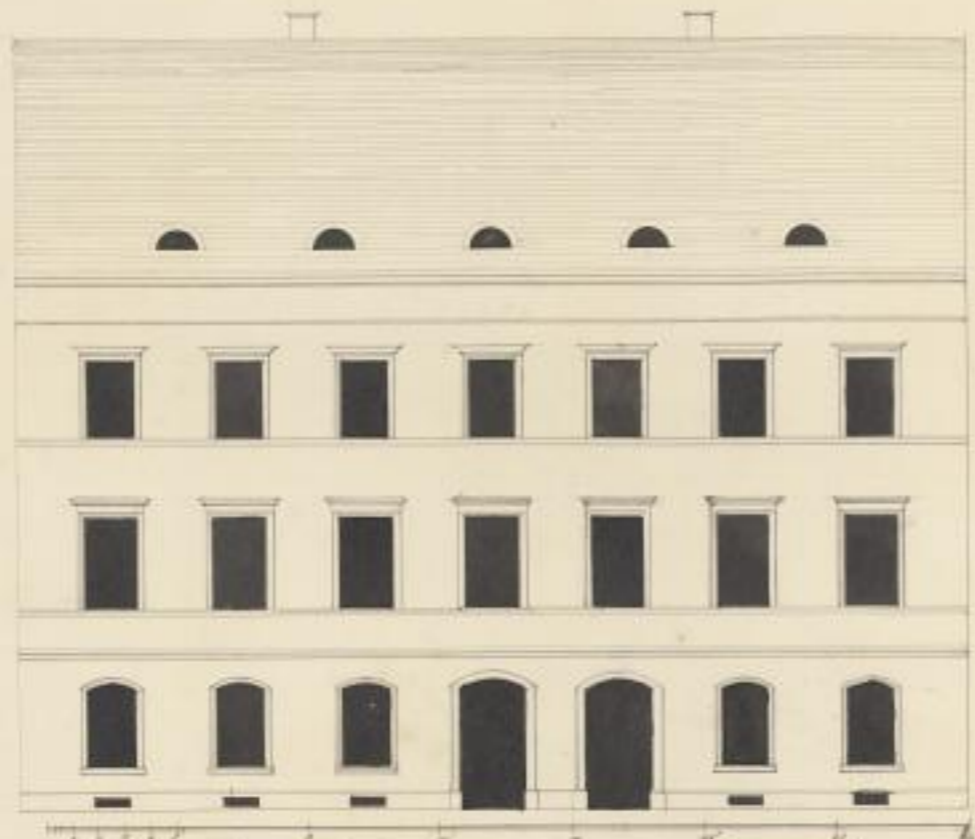
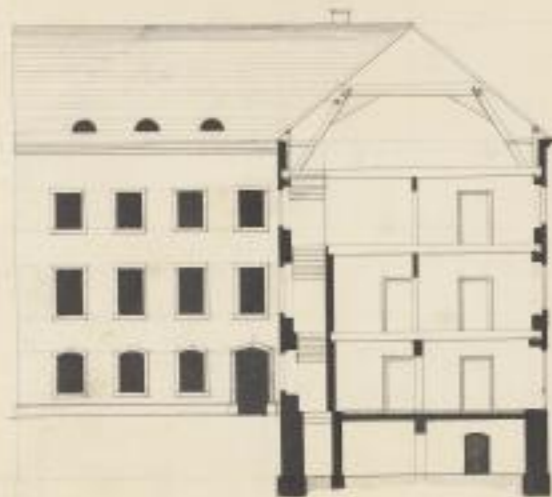
3. Stock



4. Stock

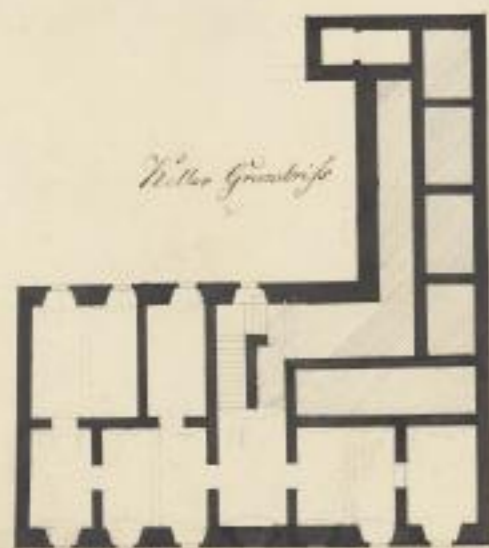


Profil

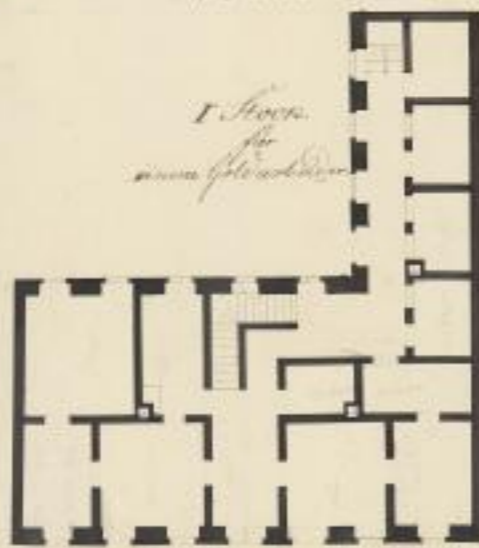


Grund-Risproß
zu einem
bürgerlichen Wohnhaus.

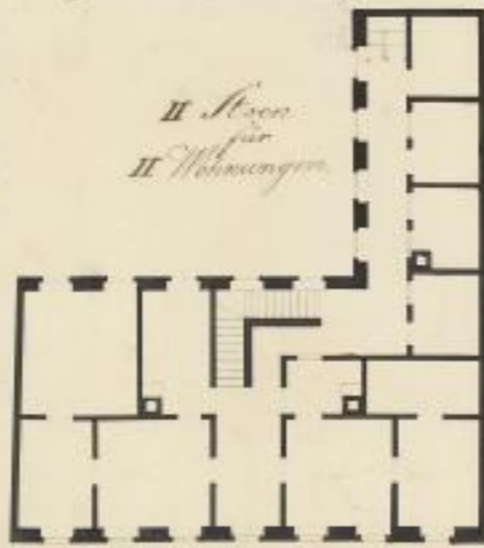
Welter Grundriß



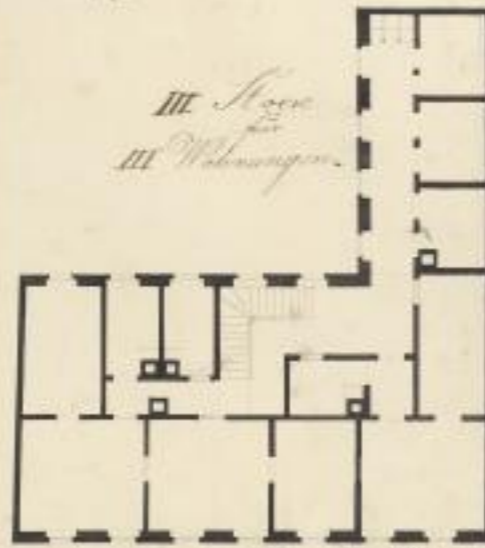
I Stock
für
eine Wohnung



II Stock
für
II Wohnungen



III Stock
für
III Wohnungen

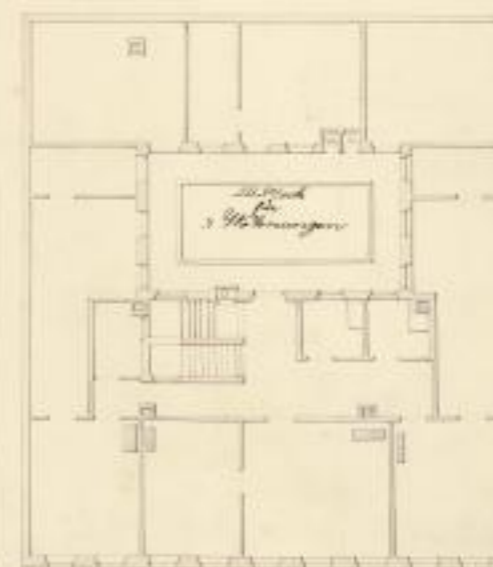
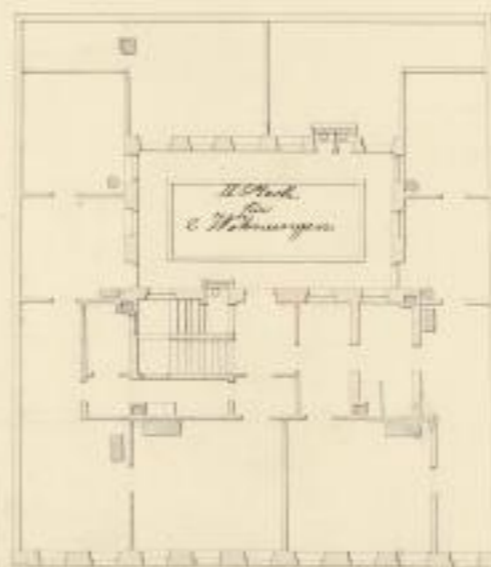
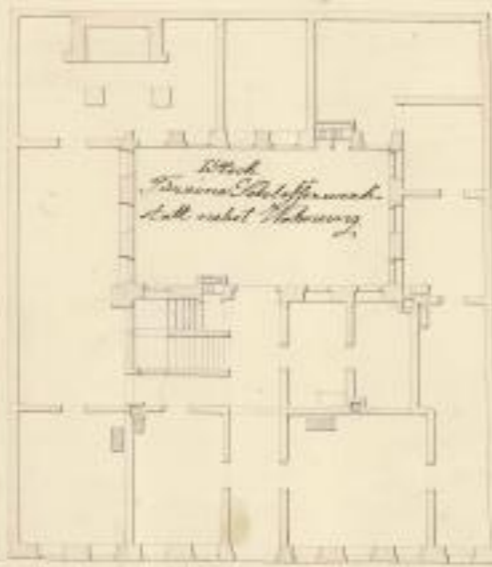
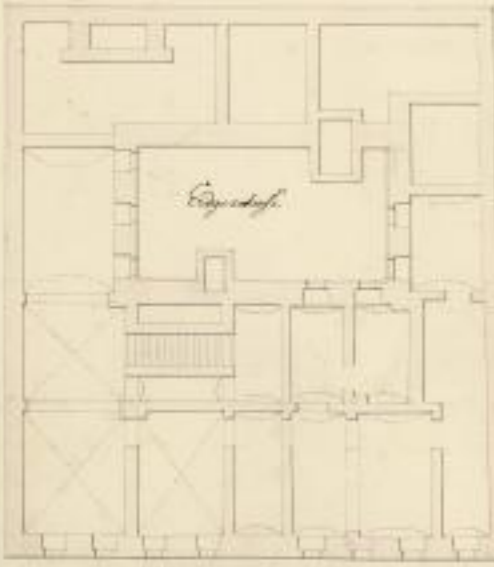
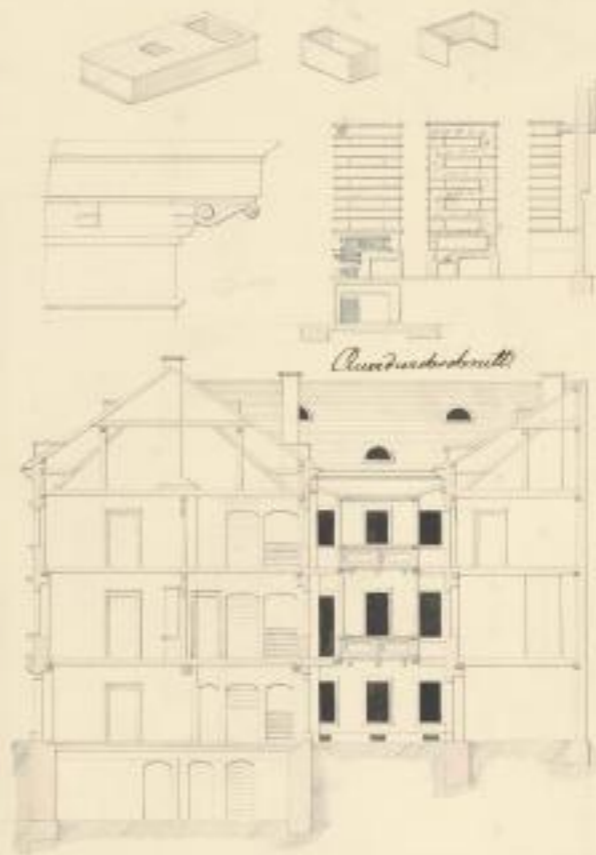
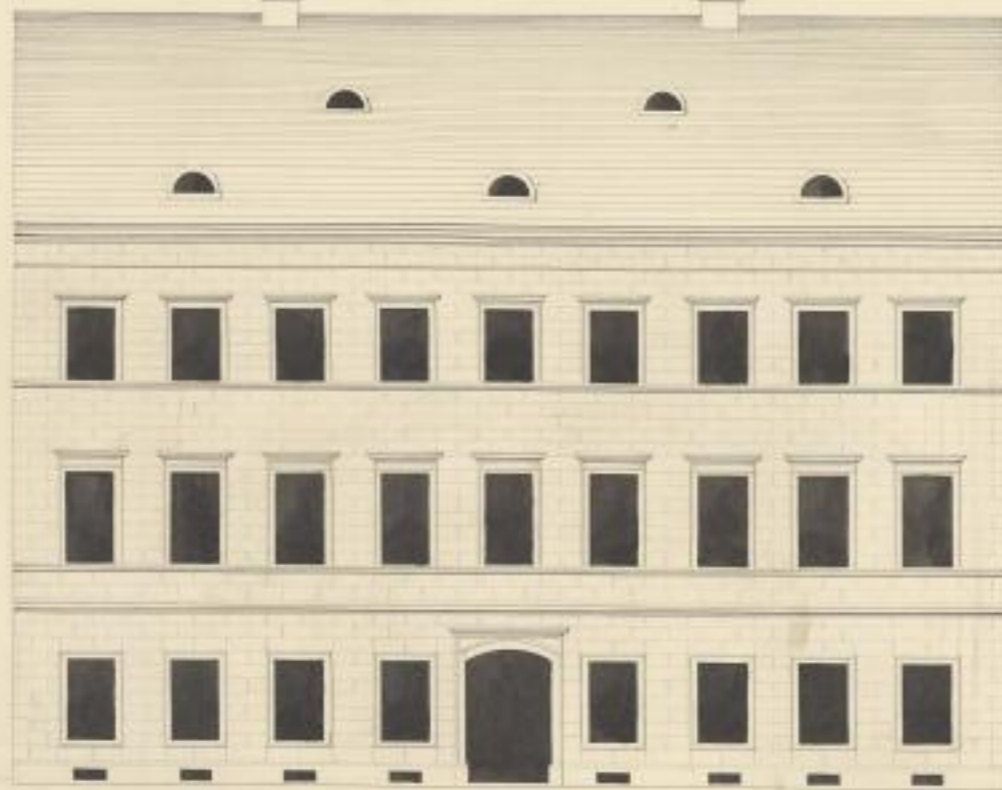


Entworfen von ...
1799

[Faint, illegible handwriting on aged paper]



*Grund- und Aufsicht
zu
einem bürgerlichen Wohnbau*

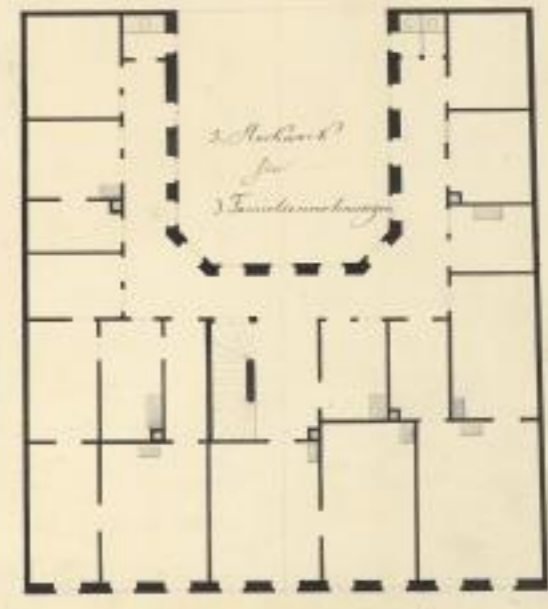
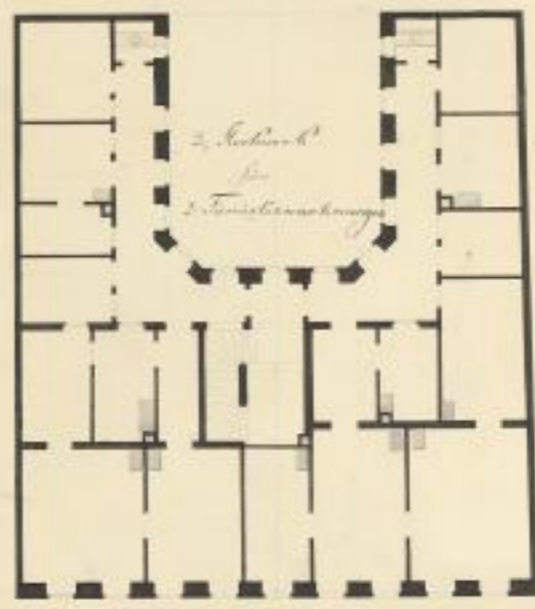
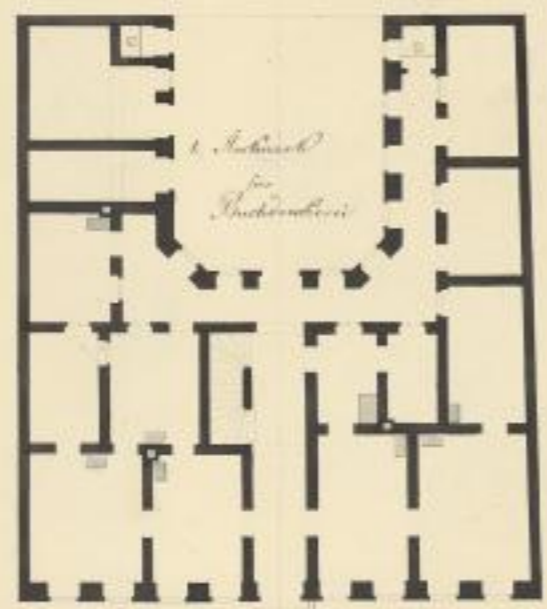
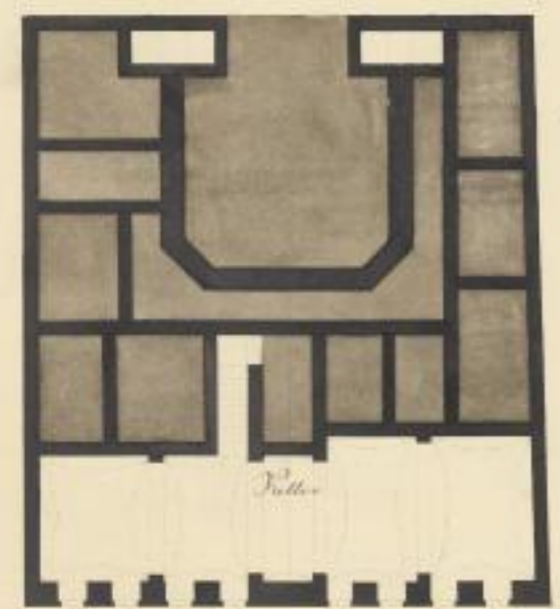
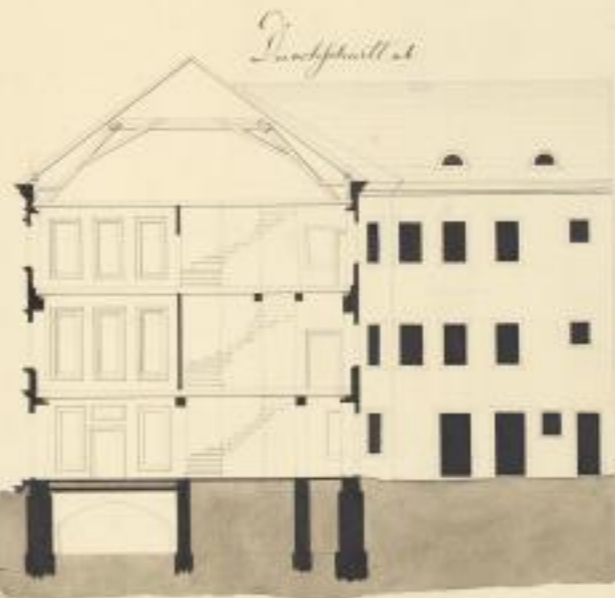
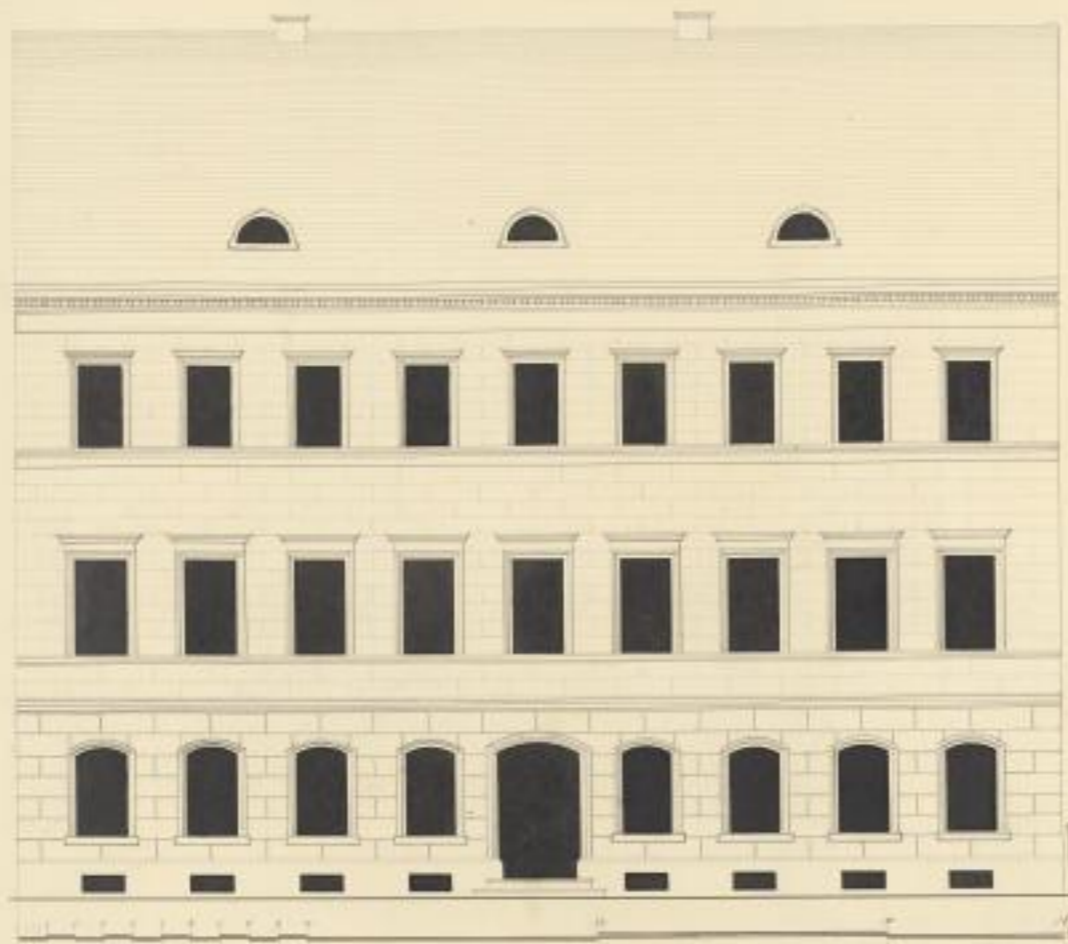


*verf. v. g. g.
Karl W. ...*



Grund u. Aufsicht nebst Teilzeichnung

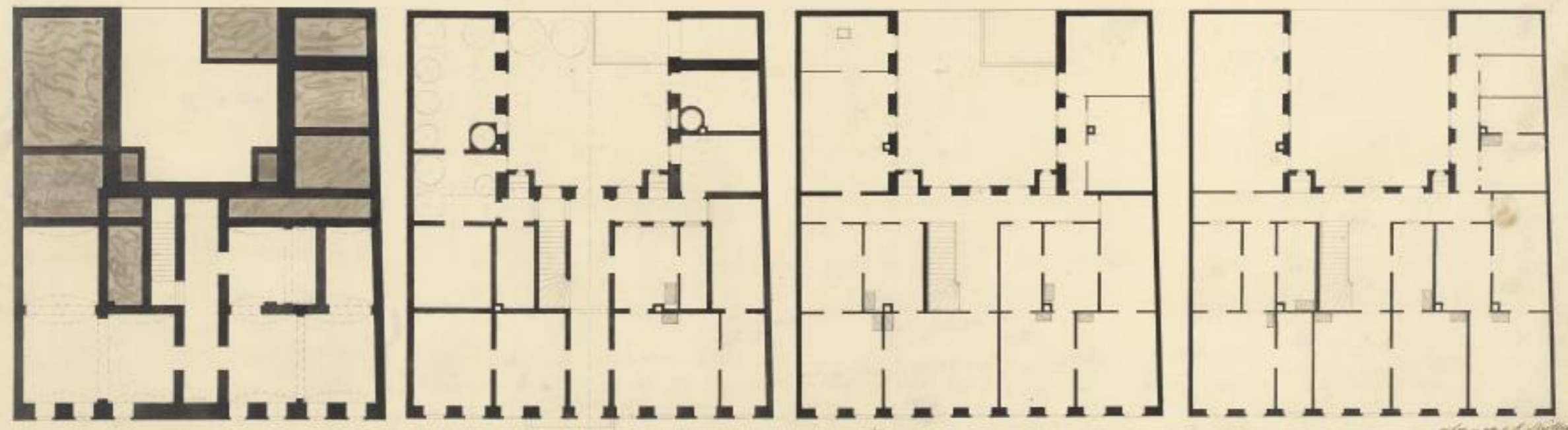
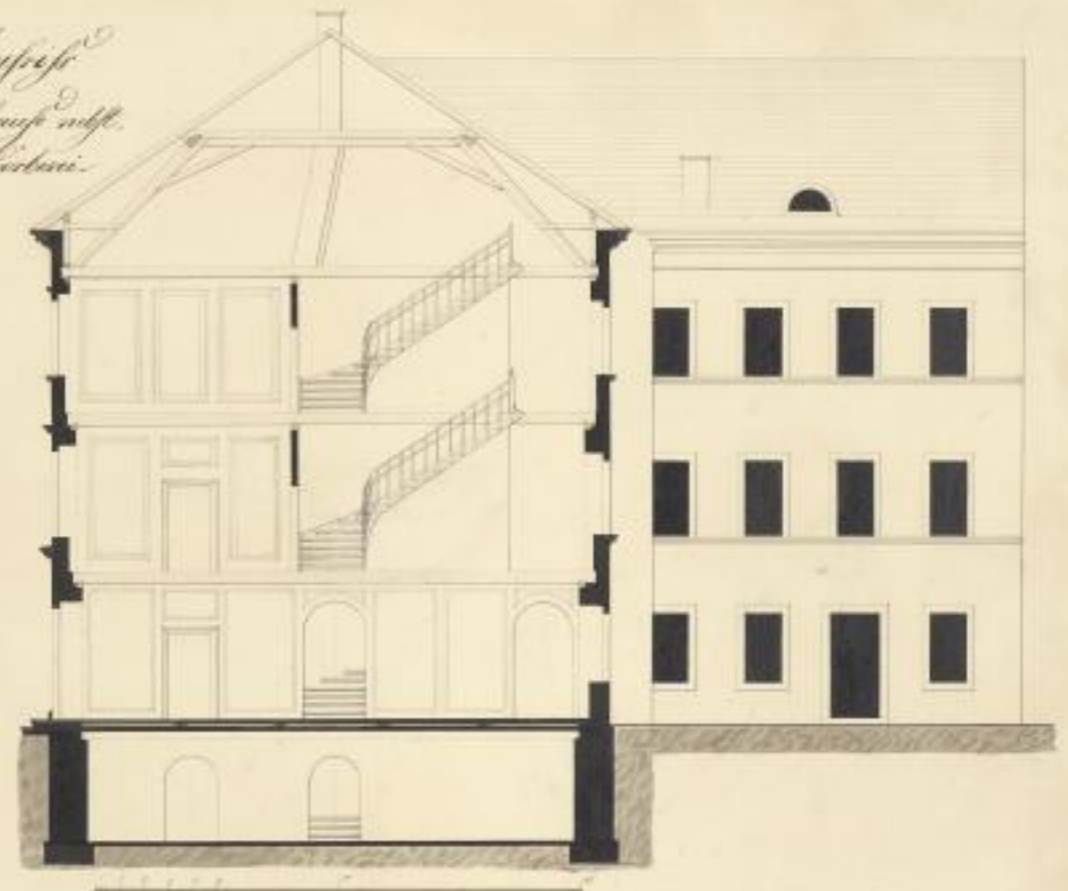
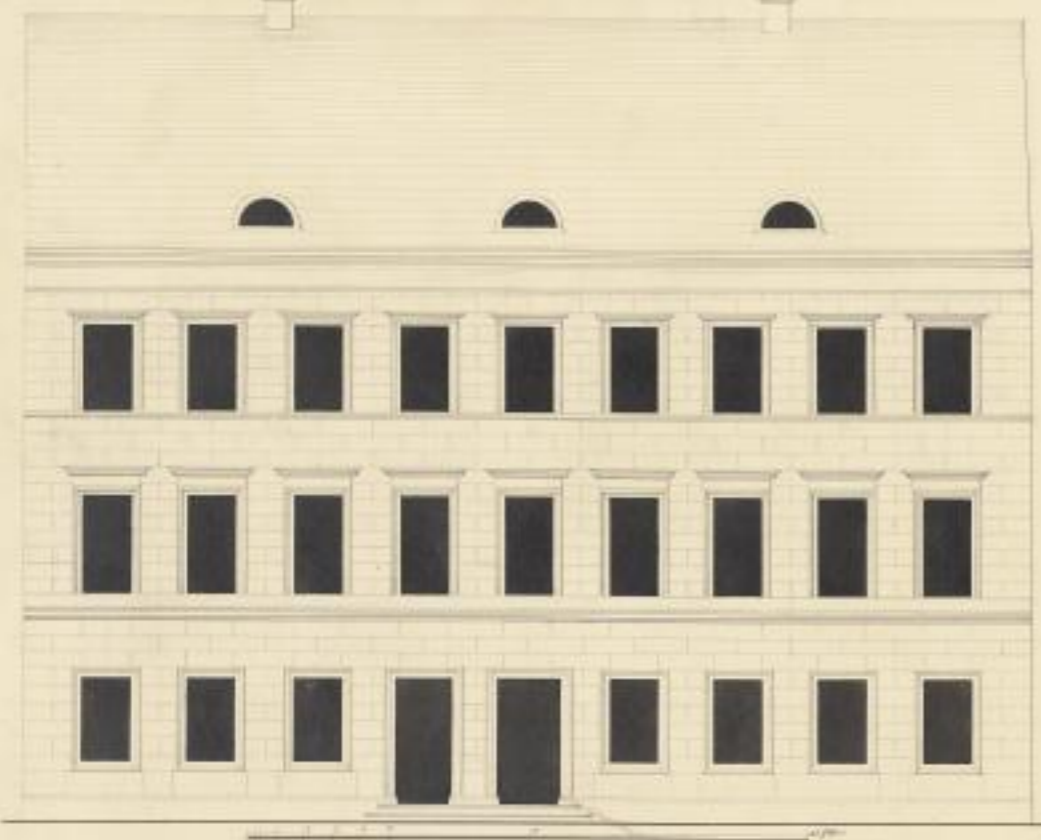
von
einem bürgerlichen Wohnhause



1793 von Carl Mering
aus Chemnitz 1792

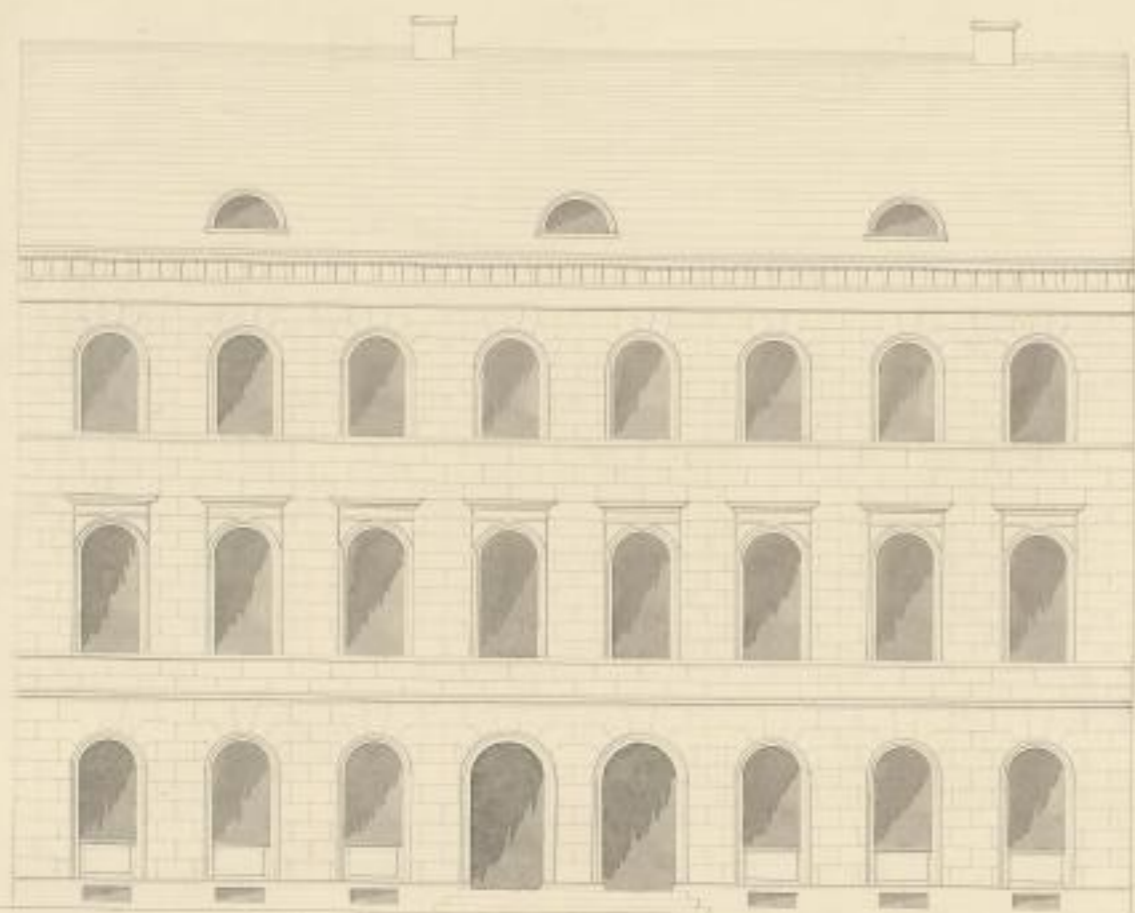


*Gaude und Kupfer
zu einem
Städtischen Wohnhaus u. s. f.
Entwerfung eines Geschnitts.*

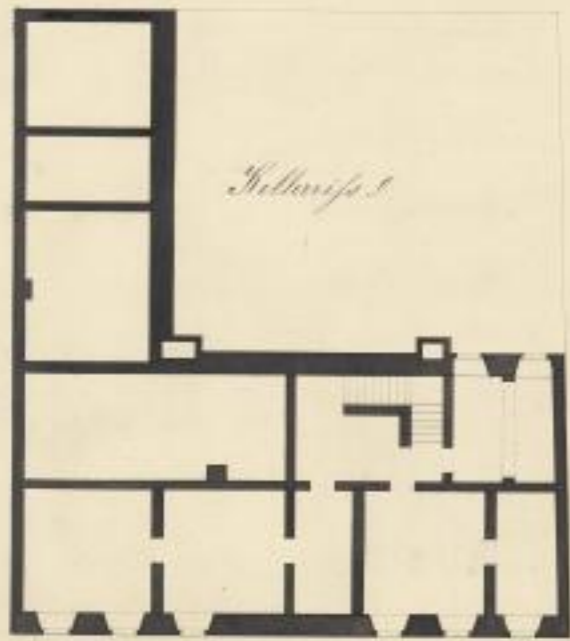
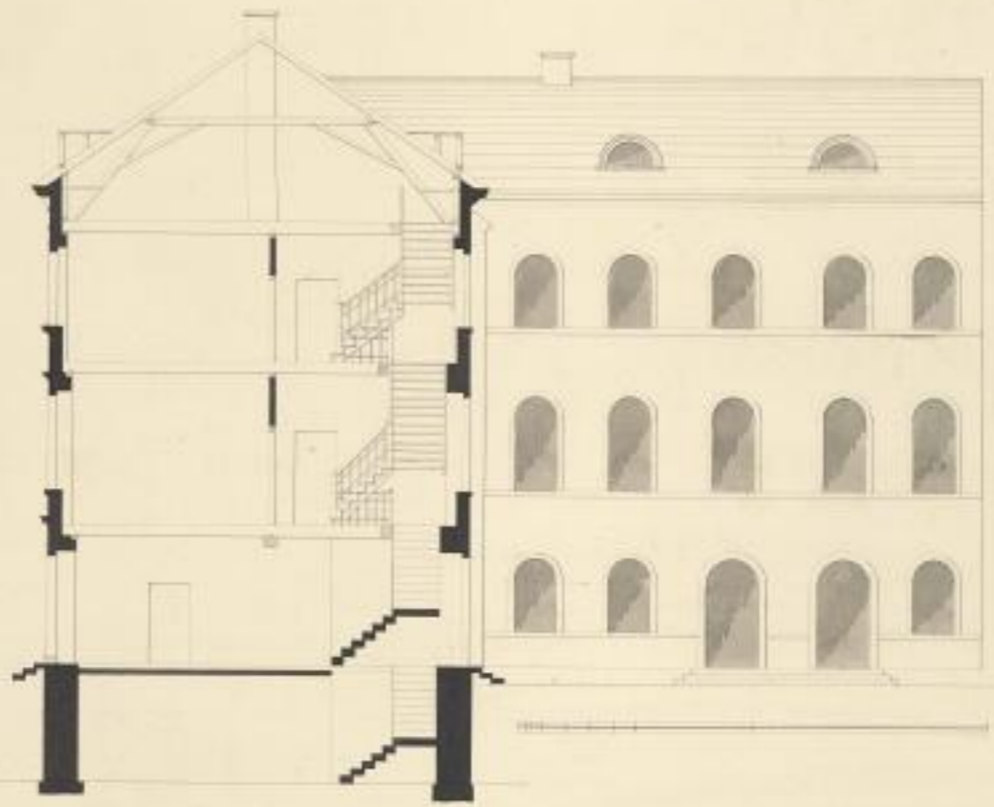


aus der ga. u. s. f. Kupfer.

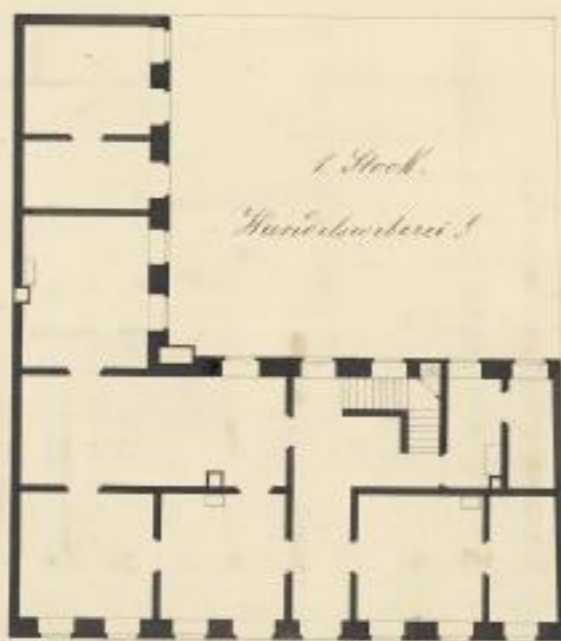




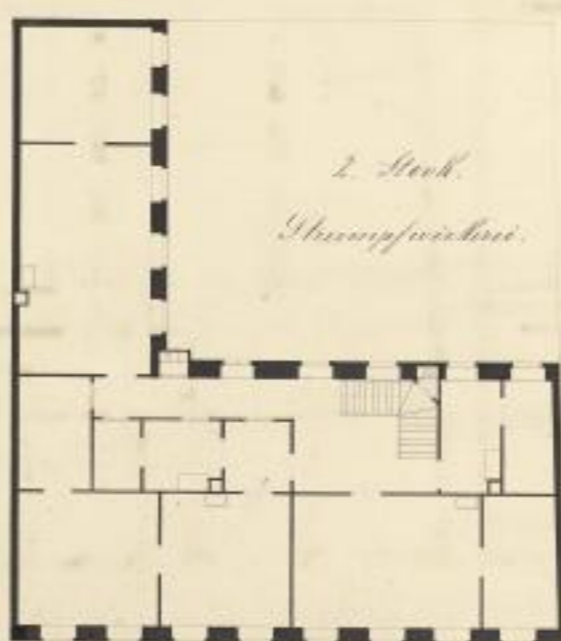
Entwurf zu einer städtischen Wohnhausf.



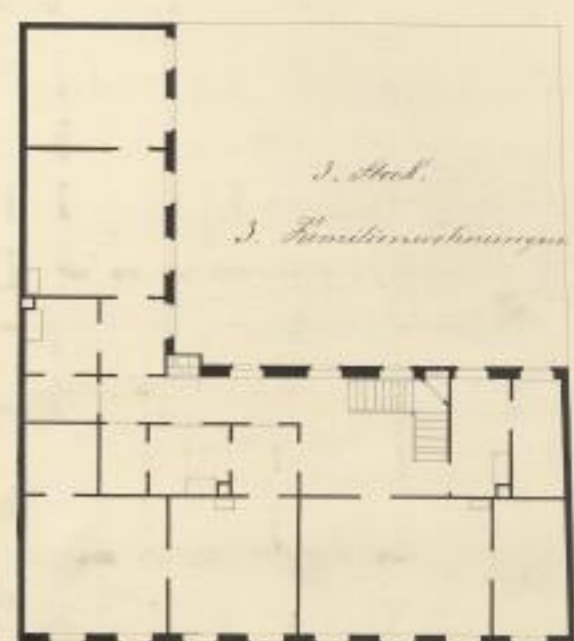
Kellerf. 1.



*1. Stock.
Wohnkammerf. 1.*

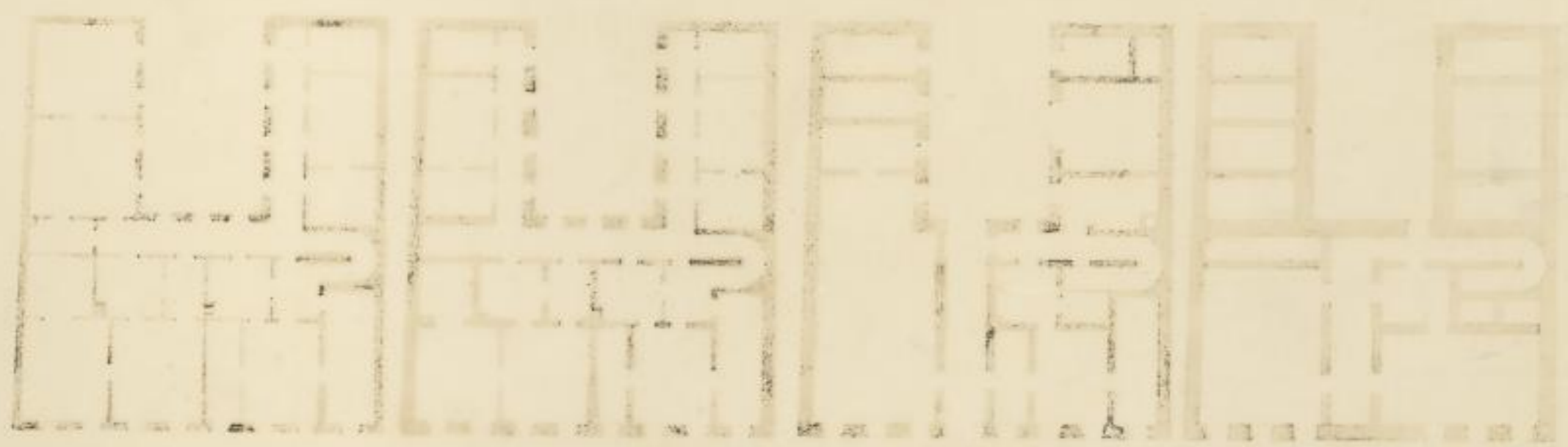


*2. Stock.
Wohnkammerf. 2.*



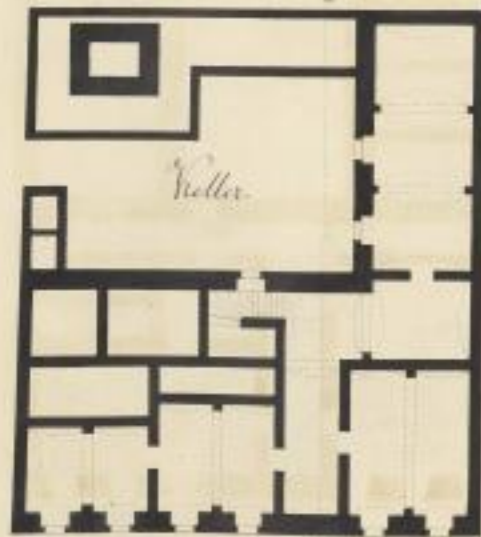
*3. Stock.
Wohnkammerf. 3.*

mit 2 ger. Treib. 1830.





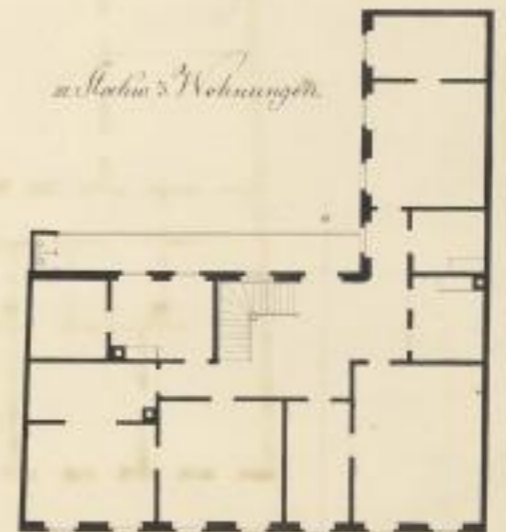
Grund- und Aufrisse zu einem städtischen Wohnhaus.



2. Stockwerk Wohnungen.



3. Stockwerk Wohnungen.



Friedrich Carl Fincke
mit Gleichen, d. 19. Aug. 1800.

