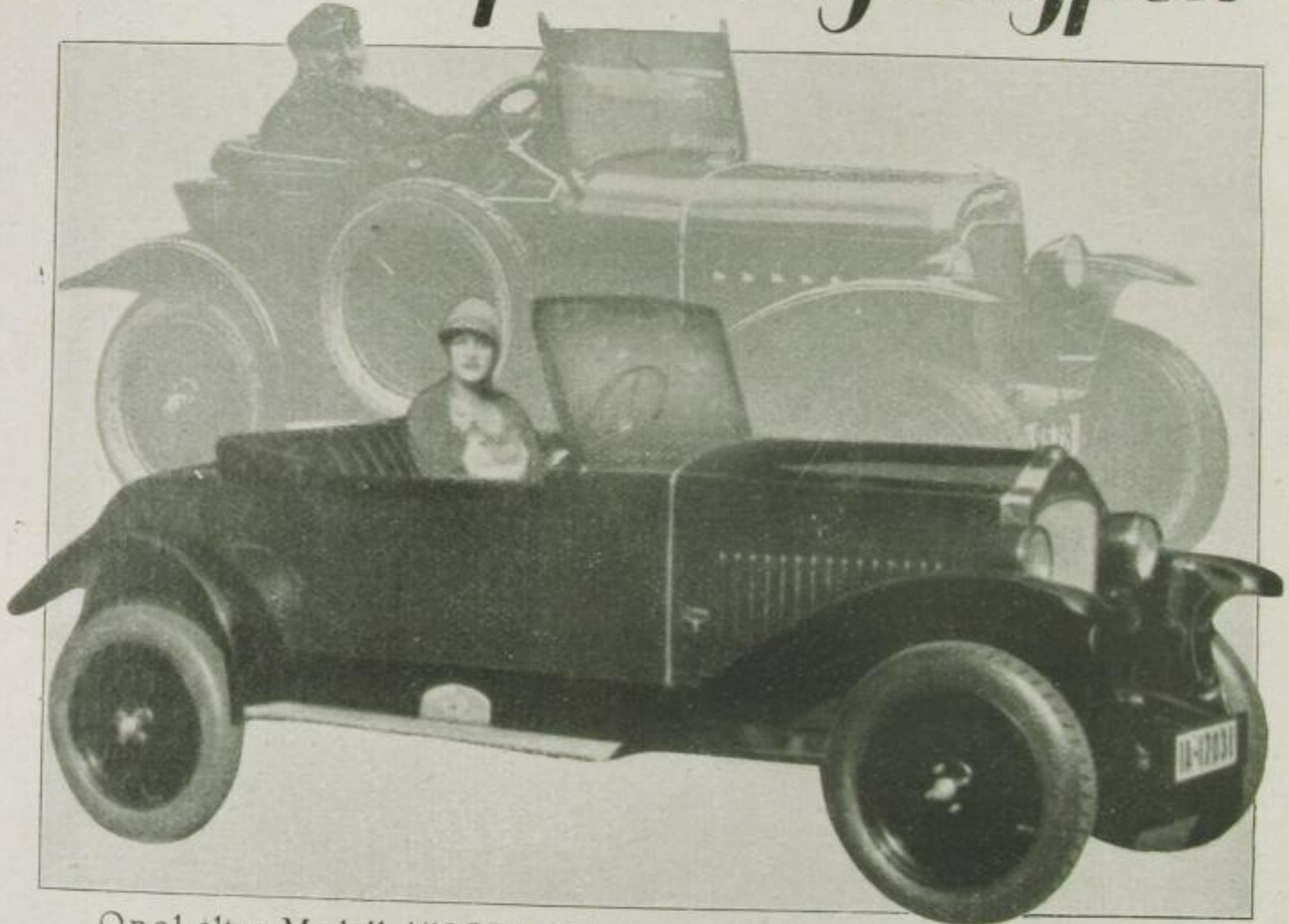
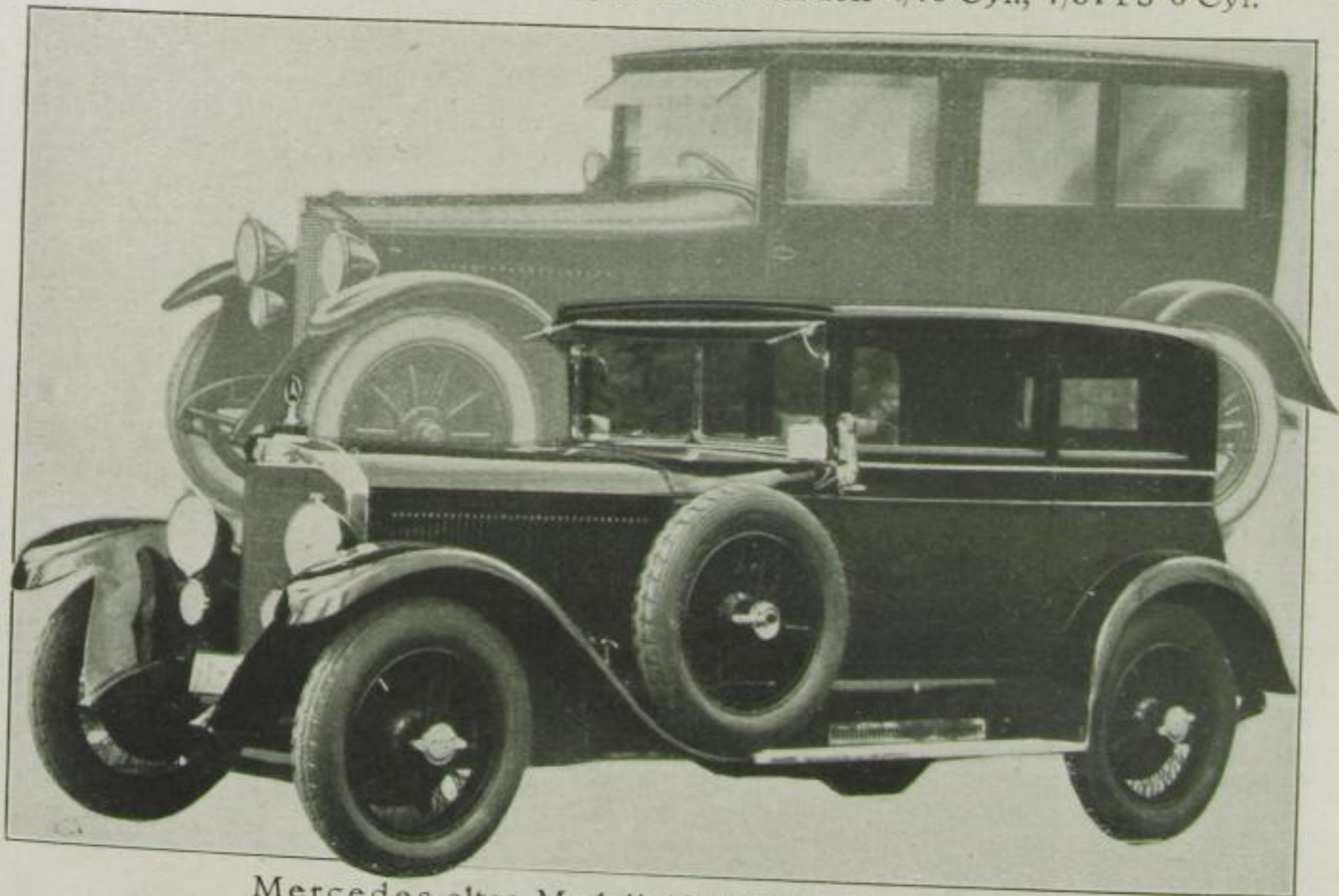


Neue deutsche Wagentypen



Opel altes Modell 4/12 PS 4 Cyl., neues Modell 4/16 Cyl., 7/34 PS 6 Cyl.



Mercedes altes Modell 16/45 PS 4 Cyl. ventillos, neues Modell 15/70/100 PS 6 Cyl., 24/100/120 PS 6 Cyl.