

U. 197.

*L'ADONE JESU,*  
*chare Jesu, ne me tu desere etc.*

a 3.

2 Violini.

Canto solo.

<sup>e</sup>  
Continuo à Doppio.

di  
Giovanni Kuhnau.

*G*

*Dom. 13. Trinit. 1690.*

V. 55

1

Mus. 2133-E-500



Organo.

**B** *Sinfonia*  
*Bone Jesu etc.*

*Bone Jesu etc.*

Handwritten musical score consisting of seven staves of music. The notation includes various rhythmic values, accidentals, and performance markings. The first staff begins with a treble clef and a key signature of one sharp (F#). The music is written in a style characteristic of 18th-century manuscript notation. The second staff contains the instruction "En! Jesu etc." written below the notes. The fifth staff contains the instruction "Allegro Alleluja." written below the notes. The score concludes with a double bar line and a final cadence on the seventh staff. The paper shows signs of age, including some staining and wear at the edges.

2133  

---

Σ 1500

Violino 1<sup>mo</sup>

**B** *Andante*  
Bone Jesu etc.

*Andante*  
Bone Jesu etc.

15.

*adagio*

19.

3. *piano* 4. *piano*

5.

12.

The image shows a page of handwritten musical notation for the first violin part. It consists of ten staves of music. The first staff begins with a large 'B' and the text 'Andante Bone Jesu etc.'. The second staff also has 'Andante Bone Jesu etc.' written below it. The third staff is marked '15.' at the end. The fourth staff is marked 'adagio'. The fifth staff has a '3.' above it. The sixth staff has a '4.' above it. The seventh staff has '3.' above it and 'piano' written below. The eighth staff has '4.' above it and 'piano' written below. The ninth staff has '5.' above it. The tenth staff has '12.' at the end. The notation includes various note values, rests, and accidentals.

Handwritten musical notation on four staves. The notation includes treble clefs, a key signature of one sharp (F#), and a tempo marking of *allegro*. The music consists of eighth and sixteenth notes, with some rests and dynamic markings. The fourth staff ends with a large scribble.

Ten empty musical staves, arranged in two groups of five. Each staff consists of five horizontal lines.

5

2133  
-----  
21500

Violino 2<sup>o</sup>

**B** *Sinfonia.*  
*Bone Jesu etc.*

*Bone Jesu etc.*

*Bone Jesu etc.*

*Bone Jesu etc.*

*Bone Jesu etc.*

*Bone Jesu etc.*

*Bone Jesu etc.*

*Bone Jesu etc.*

allegro  
Alleluja

2133  
-----  
21500

7



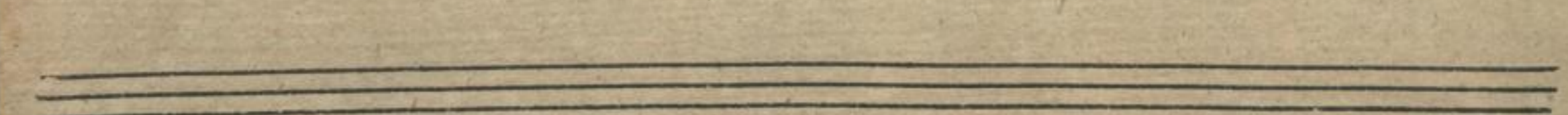
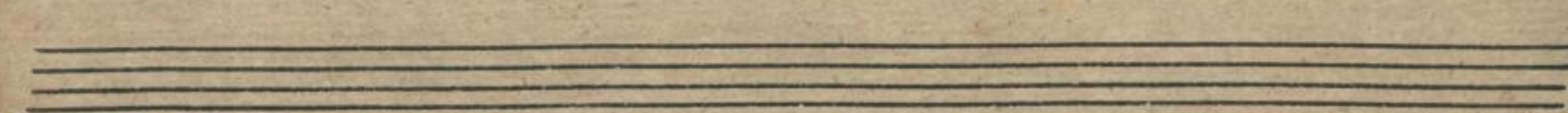
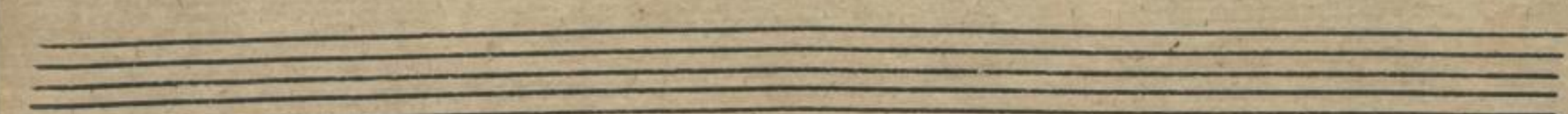
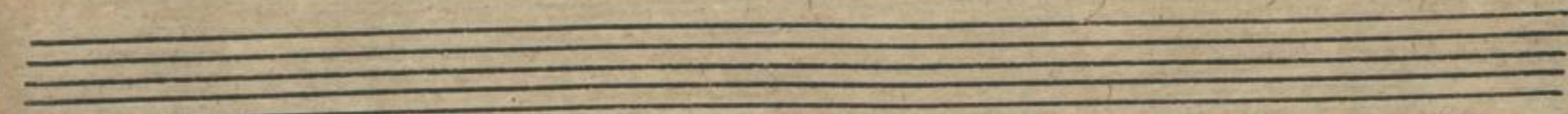
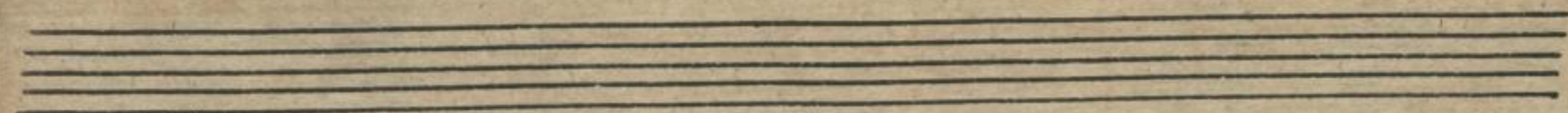
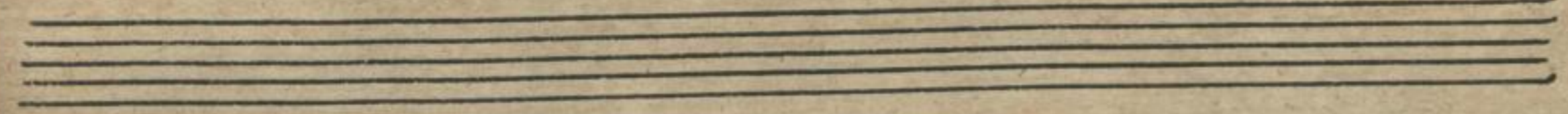
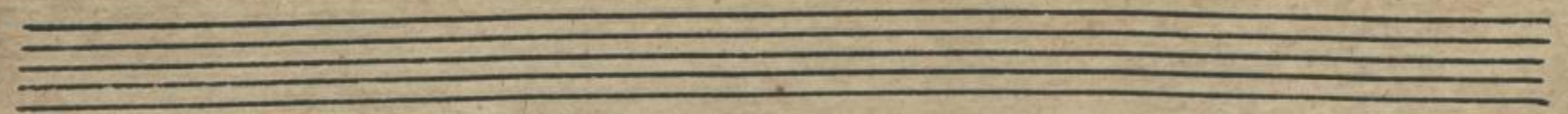
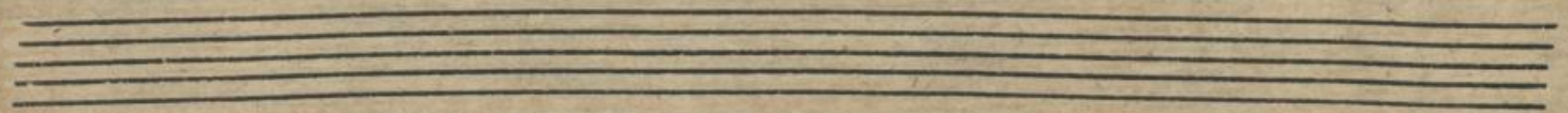
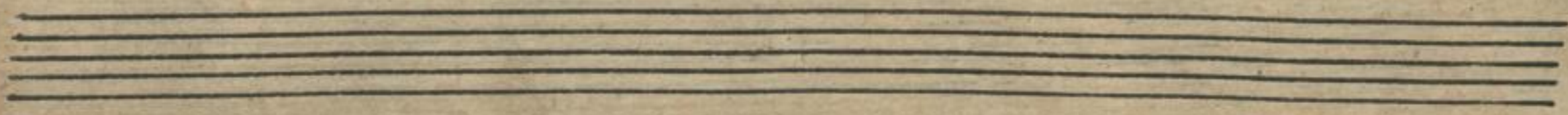
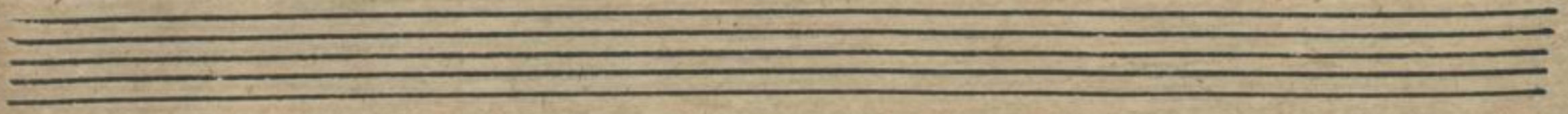
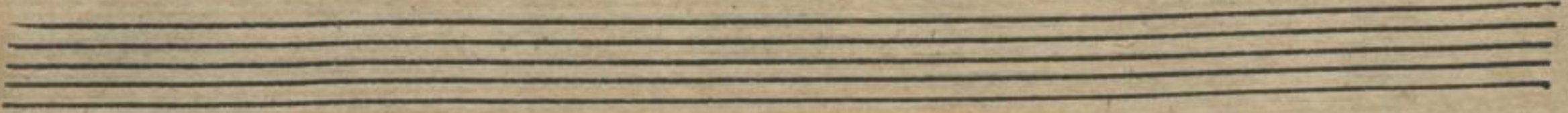
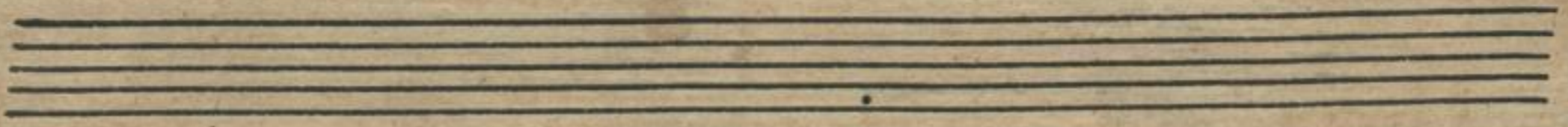
Canto Solo

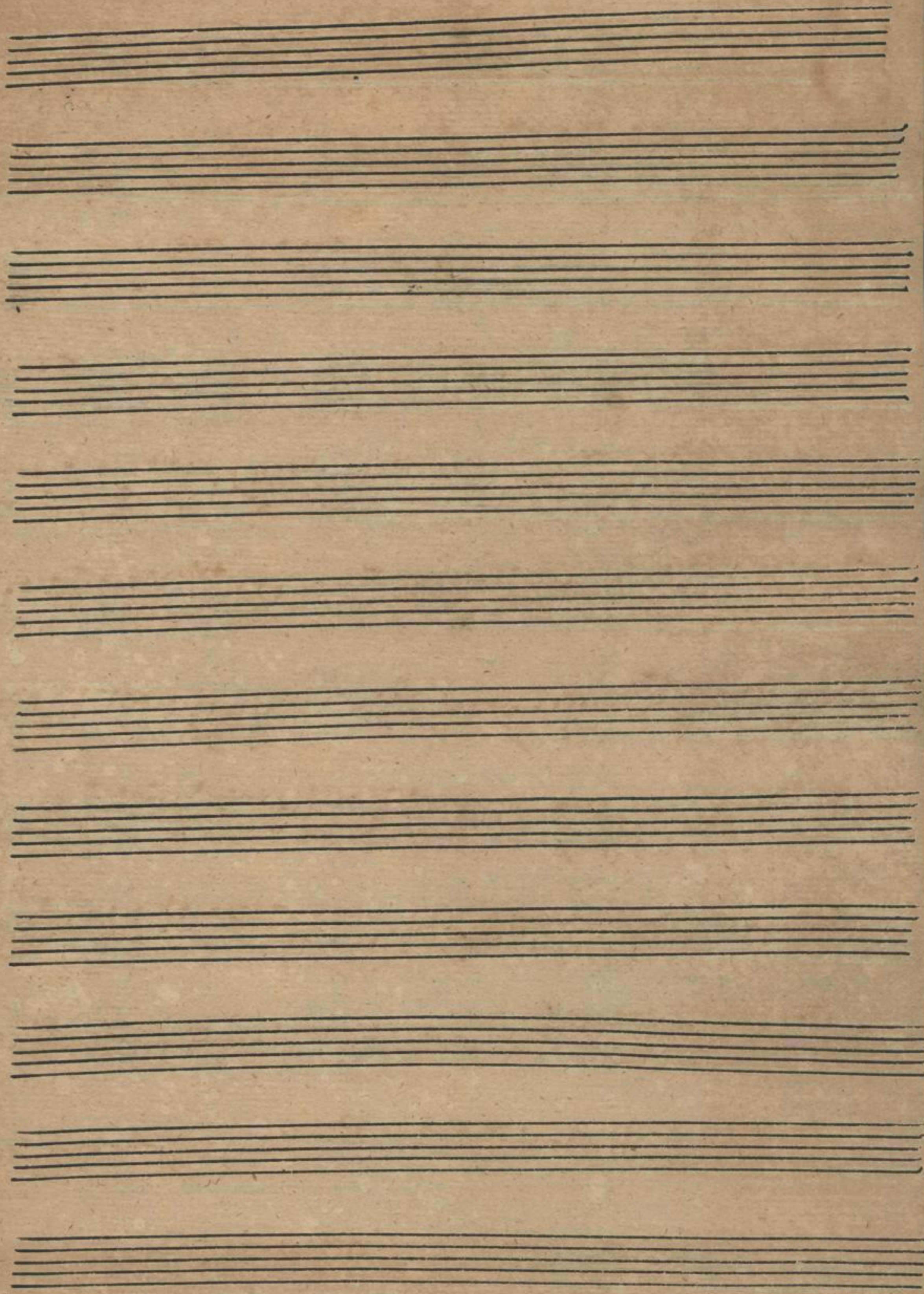
**B** <sup>10.</sup> *Sinfonia.* me Jesu, cha re Jesu,  
 bon ne Jesu cha re Je su, ne me tu de  
 sero, o bon Je su o dul  
 cis o dul cis Jesu, o dul cis Je su. *adagio* Moriar  
 lanqueo pro Te, mi Je su pro Te, mi Je  
 su lanqueo mo riar lan queo mo ri  
 ar pro Te, mi Je su, moriar pro Te mi Je su  
 Amore lan queo pro Te mi Je su, amore lanqueo  
 pro Te, mi Je su, ardore ardeo pro Te, pro Te, pro Te, mi  
 Je su. Bone Jesu. *Ad sur* gi  
 te, arsur gite de mon ti bus accur  
 rite de mon ti bus accur rite o filia

*Je" rufalem accur" — "rite de fontibz o fia li" e*  
*Je" rufalem asurgite, cur" — "rite, cur"*  
*rite. En Iesur stringit brachia, en gaudet sacra*  
*viscera, en gaudet sacra viscera, propi" — "nat pro"*  
*pinat di" va scula, en Iesur stringit brachia en gaudet sacra*  
*viscera, propinat diva scula, propinat diva o" — Scula*  
*Alleluja — Alleluja Allelu"*  
*ja Alleluja Allelu" ja*  
*Alleluja Alleluja Alleluja*  
*Alleluja Alleluja — Alleluja*

2133  
 81508

*Continuo*





2133  

---

81500