

30.



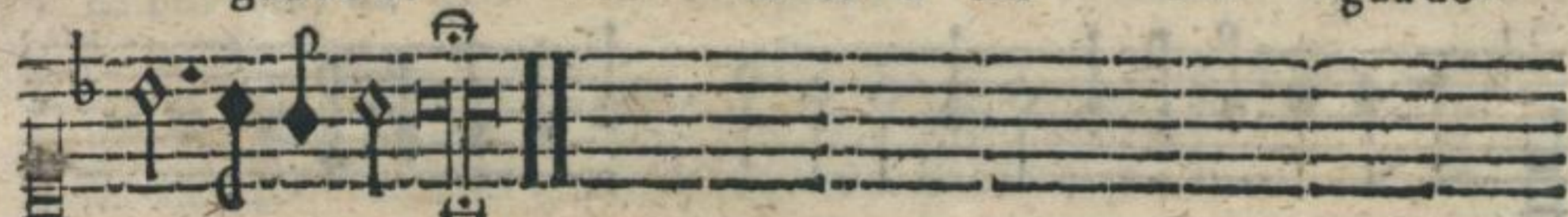
& a lin — gua a lin — — gua do lo —



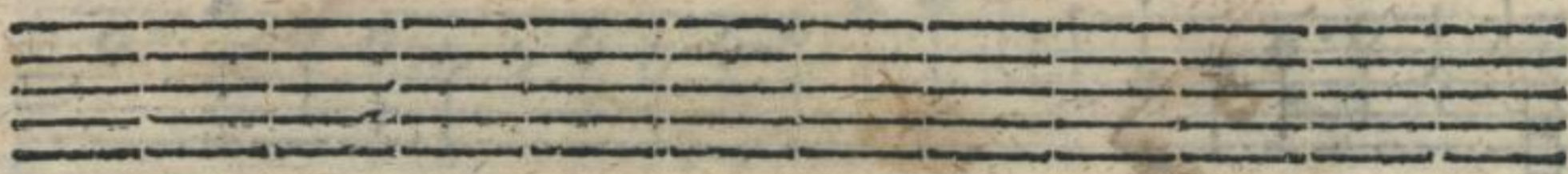
fa & a lin — — — — — gua & a lin —



gua do lo — — — — — fa & a lin — — — — — gua do-



lo — — — — — fa.



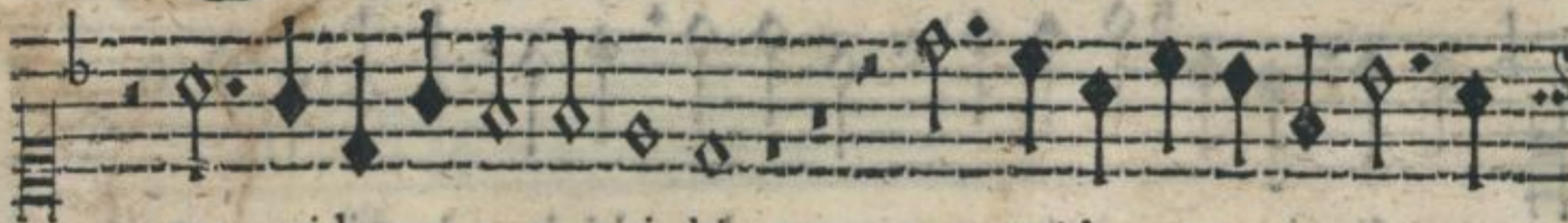
Secunda Pars.

XX.

Q



Vidde tur ti bi aut quid ap po na tur ti bi



aut quid appo na tur ti bi aut quid appo na tur ti-