



æ su per o pus in ef fa bi lis pi e ta -- tis in tu-



e re dulcem natum in tu e re dulcem natum



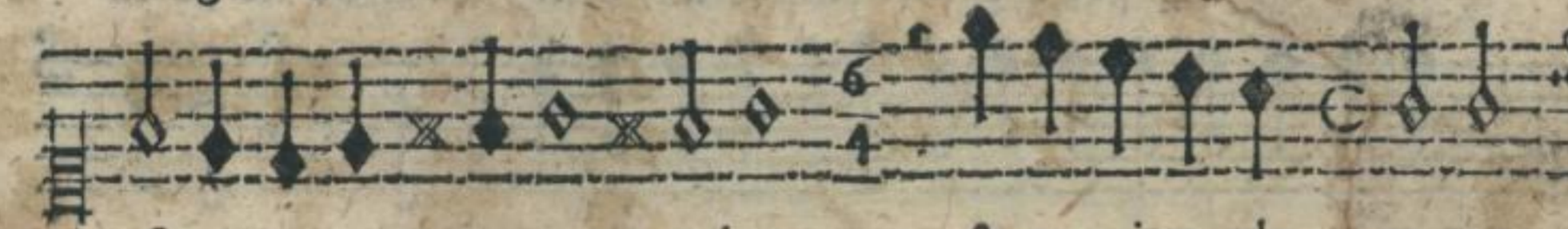
to to to to cor po re to to to to cor po re ex ten-



sum cer ne manus cer ne manus in no xi as pi o manantes



san gui ne cer ne manus in no xi as pi o manantes



san guine & re mitte pla ca tus