



to rex au di nos clementif si me Pa ter clementif si me



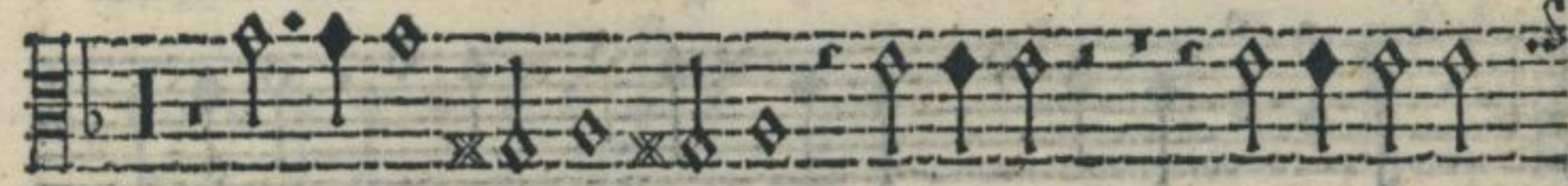
Pa ter.



Prima Pars. XXXIII.



Domine: neque in i ra tu a cor ri pi as me



mi se re re me i quoniam quoniam in-



fir mus sum sa na me Do mi ne sa na me Do mi-



ne quoniam con tur ba ta sunt ossa mea & a ni ma me-

H 2

67