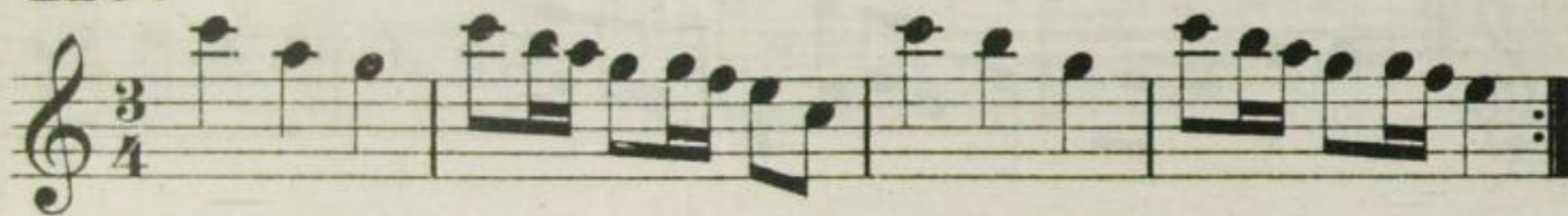
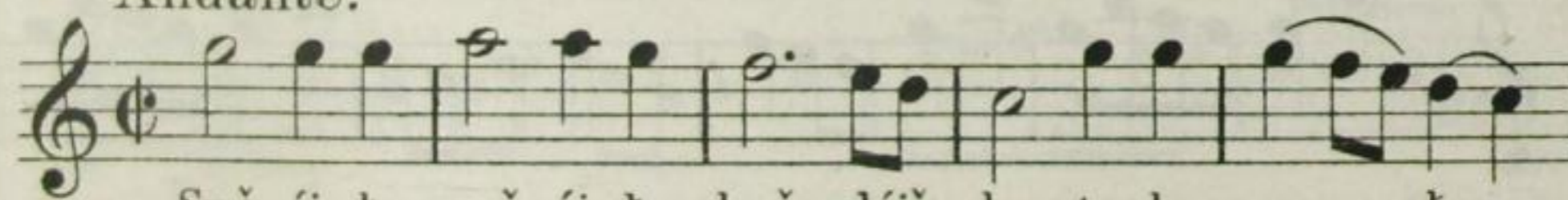




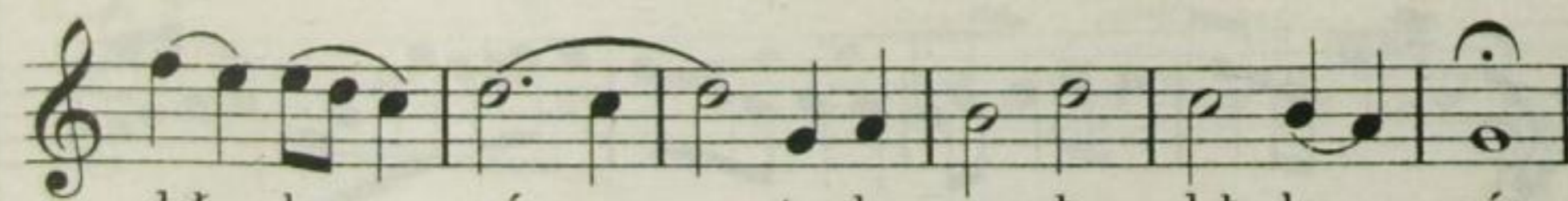
116.



B.) Wšelake.

117. Variant k č. 61.
Andante.

Swě-čí-řa, swě-čí-řa hwě-zdžič-ka tu-le cy- - řu



doř - hu nóc, tu-le cy- řu doř - hu nóc.

118. Přezpólo kwasne do cyrkwje.
Variant k č. 46.