

Rotirende Diffusionsbatterie
der Prager Maschinenbau-Aktiengesellschaft.

(1-3)

Fig. 5.

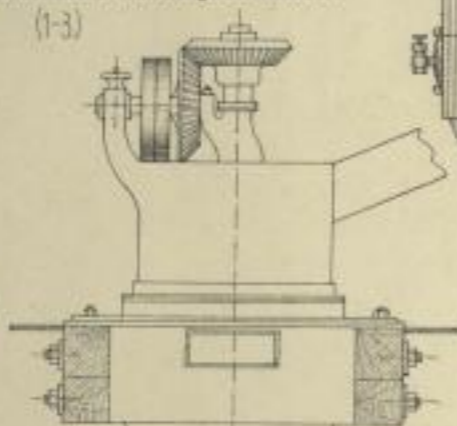
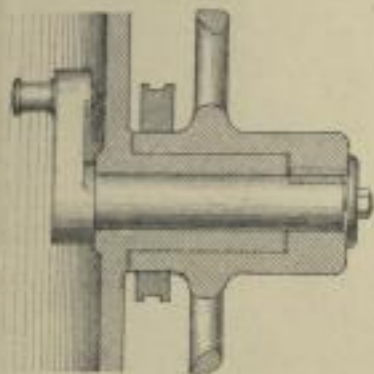
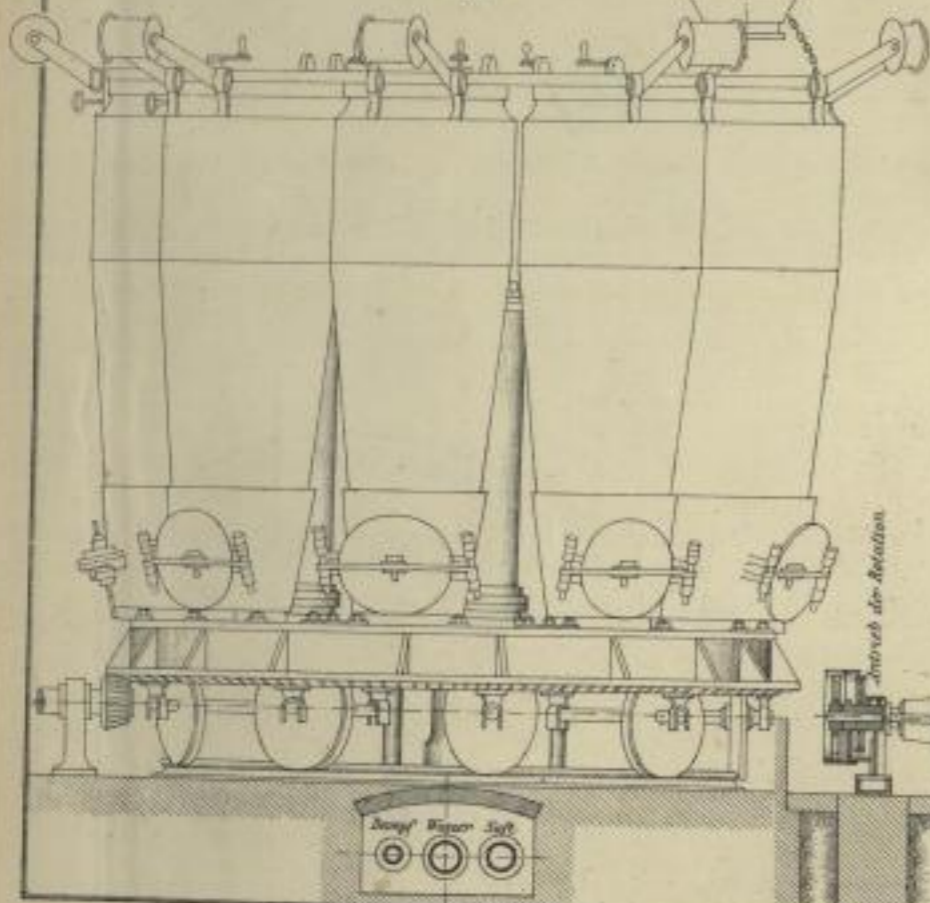


Fig. 1.



Antrieb der Rotation

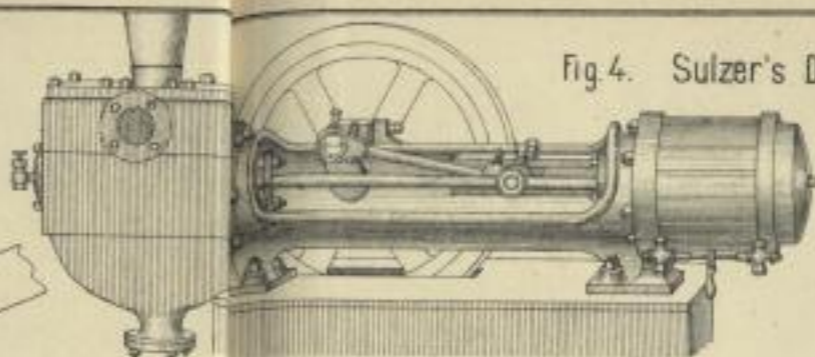
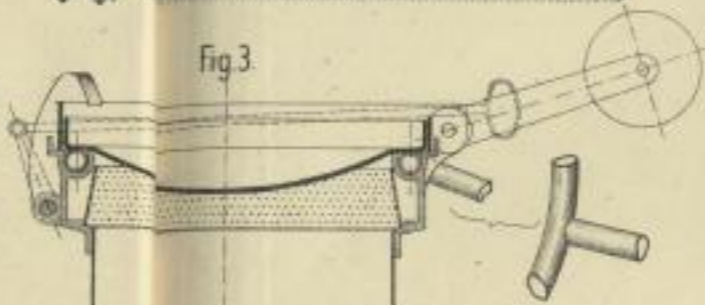
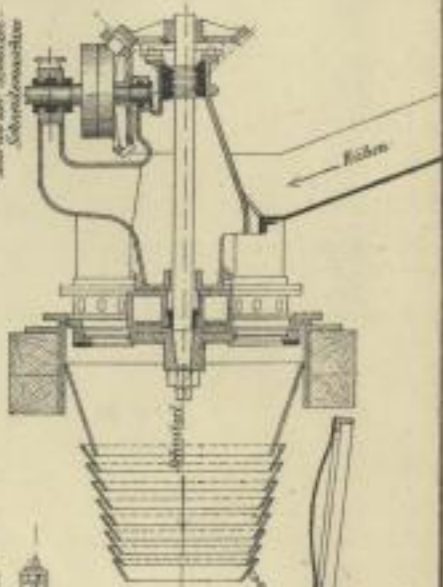


Fig. 4. Sulzer's Dampfmaschine. (4u5)

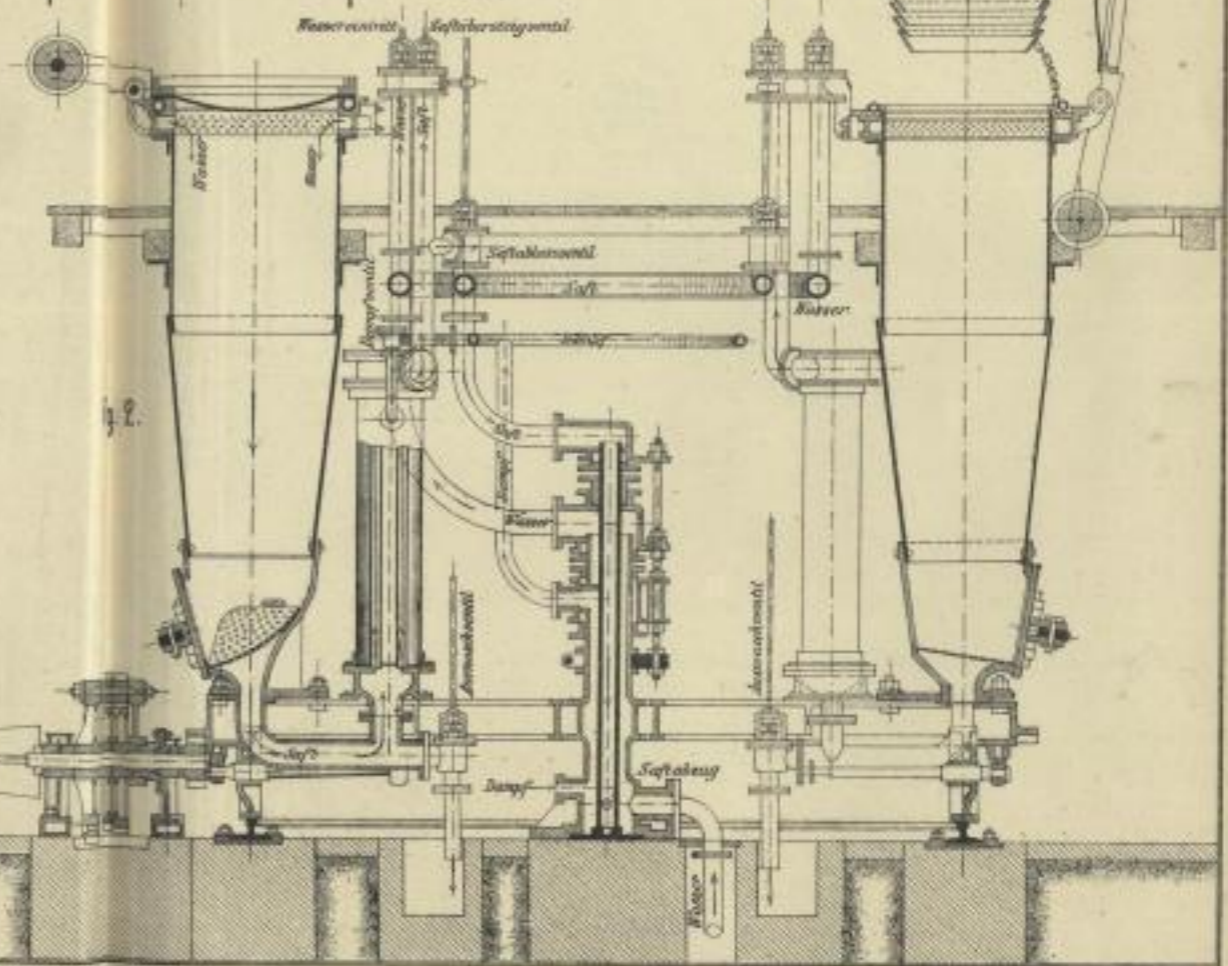
Fig. 3.



Antrieb der Schraub-
Schraubenpumpe



Kesselsventil Saftabstrichventil



Lith. Anst. v. F. W. Barthstadt.

