

(li. 57.)

Dom. 21.
Trinit.

Mass / wenn Trübsaal daist
a 9.
5 Strumenti.
4 Voci.
4 Voci in Lipsieno.
Continuo
Edel Sigr
Exlobach.

ES

1710.

(0 29)



Mus. 2115-E-505

1

Handwritten musical score on the left page, featuring ten staves of music. The notation includes notes, rests, and various accidentals. Above the first staff, there are handwritten numbers: 6 5 # 6 # 6 7 6 5, 6 7 6 # 6 6 6 # 6 # 6 7 6 5, and # # # # #. The word "Stromm." is written below the first staff. Other annotations include "Stromm.", "Sopr.", "A. T.", "Alt. sol.", and "Stromm.".

Handwritten musical score on the right page, featuring five staves of music. The notation includes notes, rests, and various accidentals. Above the first staff, there are handwritten numbers: 6 # 6 6 5 # 6 6. The word "Soli." is written below the fourth staff. Other annotations include "Soli." and "piano".

100 103 104 105 106 107 108 109 110 111 112 113 114 115 116 117 118 119 120 121 122 123 124 125 126 127 128 129 130 131 132 133 134 135 136 137 138 139 140 141 142 143 144 145 146 147 148 149 150 151 152 153 154 155 156 157 158 159 160 161 162 163 164 165 166 167 168 169 170 171 172 173 174 175 176 177 178 179 180 181 182 183 184 185 186 187 188 189 190 191 192 193 194 195 196 197 198 199 200

Handwritten musical score on aged paper. The score consists of several staves. The top staff is a vocal line with lyrics: "Solig ist der Mann." and "Tutti." followed by "Soli:". The second staff is a guitar accompaniment line with the instruction "Stromm." and "Cap." (Cappiccio). The third staff is another vocal line with "Soli." and "Cap." markings. The fourth staff is a guitar accompaniment line with "Cap." markings. The fifth staff is a vocal line with "Soli." and "Cap." markings. The sixth staff is a guitar accompaniment line with "Cap." markings. The seventh staff is a vocal line with "Soli." and "Cap." markings. The eighth staff is a guitar accompaniment line with "Cap." markings. The ninth staff is a vocal line with "Soli." and "Cap." markings. The tenth staff is a guitar accompaniment line with "Cap." markings. The eleventh staff is a vocal line with "Soli." and "Cap." markings. The twelfth staff is a guitar accompaniment line with "Cap." markings. The thirteenth staff is a vocal line with "Soli." and "Cap." markings. The fourteenth staff is a guitar accompaniment line with "Cap." markings. The fifteenth staff is a vocal line with "Soli." and "Cap." markings. The sixteenth staff is a guitar accompaniment line with "Cap." markings. The seventeenth staff is a vocal line with "Soli." and "Cap." markings. The eighteenth staff is a guitar accompaniment line with "Cap." markings. The nineteenth staff is a vocal line with "Soli." and "Cap." markings. The twentieth staff is a guitar accompaniment line with "Cap." markings. The twenty-first staff is a vocal line with "Soli." and "Cap." markings. The twenty-second staff is a guitar accompaniment line with "Cap." markings. The twenty-third staff is a vocal line with "Soli." and "Cap." markings. The twenty-fourth staff is a guitar accompaniment line with "Cap." markings. The twenty-fifth staff is a vocal line with "Soli." and "Cap." markings. The twenty-sixth staff is a guitar accompaniment line with "Cap." markings. The twenty-seventh staff is a vocal line with "Soli." and "Cap." markings. The twenty-eighth staff is a guitar accompaniment line with "Cap." markings. The twenty-ninth staff is a vocal line with "Soli." and "Cap." markings. The thirtieth staff is a guitar accompaniment line with "Cap." markings. The thirty-first staff is a vocal line with "Soli." and "Cap." markings. The thirty-second staff is a guitar accompaniment line with "Cap." markings. The thirty-third staff is a vocal line with "Soli." and "Cap." markings. The thirty-fourth staff is a guitar accompaniment line with "Cap." markings. The thirty-fifth staff is a vocal line with "Soli." and "Cap." markings. The thirty-sixth staff is a guitar accompaniment line with "Cap." markings. The thirty-seventh staff is a vocal line with "Soli." and "Cap." markings. The thirty-eighth staff is a guitar accompaniment line with "Cap." markings. The thirty-ninth staff is a vocal line with "Soli." and "Cap." markings. The fortieth staff is a guitar accompaniment line with "Cap." markings. The forty-first staff is a vocal line with "Soli." and "Cap." markings. The forty-second staff is a guitar accompaniment line with "Cap." markings. The forty-third staff is a vocal line with "Soli." and "Cap." markings. The forty-fourth staff is a guitar accompaniment line with "Cap." markings. The forty-fifth staff is a vocal line with "Soli." and "Cap." markings. The forty-sixth staff is a guitar accompaniment line with "Cap." markings. The forty-seventh staff is a vocal line with "Soli." and "Cap." markings. The forty-eighth staff is a guitar accompaniment line with "Cap." markings. The forty-ninth staff is a vocal line with "Soli." and "Cap." markings. The fiftieth staff is a guitar accompaniment line with "Cap." markings. The fifty-first staff is a vocal line with "Soli." and "Cap." markings. The fifty-second staff is a guitar accompaniment line with "Cap." markings. The fifty-third staff is a vocal line with "Soli." and "Cap." markings. The fifty-fourth staff is a guitar accompaniment line with "Cap." markings. The fifty-fifth staff is a vocal line with "Soli." and "Cap." markings. The fifty-sixth staff is a guitar accompaniment line with "Cap." markings. The fifty-seventh staff is a vocal line with "Soli." and "Cap." markings. The fifty-eighth staff is a guitar accompaniment line with "Cap." markings. The fifty-ninth staff is a vocal line with "Soli." and "Cap." markings. The sixtieth staff is a guitar accompaniment line with "Cap." markings. The sixty-first staff is a vocal line with "Soli." and "Cap." markings. The sixty-second staff is a guitar accompaniment line with "Cap." markings. The sixty-third staff is a vocal line with "Soli." and "Cap." markings. The sixty-fourth staff is a guitar accompaniment line with "Cap." markings. The sixty-fifth staff is a vocal line with "Soli." and "Cap." markings. The sixty-sixth staff is a guitar accompaniment line with "Cap." markings. The sixty-seventh staff is a vocal line with "Soli." and "Cap." markings. The sixty-eighth staff is a guitar accompaniment line with "Cap." markings. The sixty-ninth staff is a vocal line with "Soli." and "Cap." markings. The seventieth staff is a guitar accompaniment line with "Cap." markings. The seventy-first staff is a vocal line with "Soli." and "Cap." markings. The seventy-second staff is a guitar accompaniment line with "Cap." markings. The seventy-third staff is a vocal line with "Soli." and "Cap." markings. The seventy-fourth staff is a guitar accompaniment line with "Cap." markings. The seventy-fifth staff is a vocal line with "Soli." and "Cap." markings. The seventy-sixth staff is a guitar accompaniment line with "Cap." markings. The seventy-seventh staff is a vocal line with "Soli." and "Cap." markings. The seventy-eighth staff is a guitar accompaniment line with "Cap." markings. The seventy-ninth staff is a vocal line with "Soli." and "Cap." markings. The eightieth staff is a guitar accompaniment line with "Cap." markings. The eighty-first staff is a vocal line with "Soli." and "Cap." markings. The eighty-second staff is a guitar accompaniment line with "Cap." markings. The eighty-third staff is a vocal line with "Soli." and "Cap." markings. The eighty-fourth staff is a guitar accompaniment line with "Cap." markings. The eighty-fifth staff is a vocal line with "Soli." and "Cap." markings. The eighty-sixth staff is a guitar accompaniment line with "Cap." markings. The eighty-seventh staff is a vocal line with "Soli." and "Cap." markings. The eighty-eighth staff is a guitar accompaniment line with "Cap." markings. The eighty-ninth staff is a vocal line with "Soli." and "Cap." markings. The ninetieth staff is a guitar accompaniment line with "Cap." markings. The ninety-first staff is a vocal line with "Soli." and "Cap." markings. The ninety-second staff is a guitar accompaniment line with "Cap." markings. The ninety-third staff is a vocal line with "Soli." and "Cap." markings. The ninety-fourth staff is a guitar accompaniment line with "Cap." markings. The ninety-fifth staff is a vocal line with "Soli." and "Cap." markings. The ninety-sixth staff is a guitar accompaniment line with "Cap." markings. The ninety-seventh staff is a vocal line with "Soli." and "Cap." markings. The ninety-eighth staff is a guitar accompaniment line with "Cap." markings. The ninety-ninth staff is a vocal line with "Soli." and "Cap." markings. The hundredth staff is a guitar accompaniment line with "Cap." markings.

Sopran.

22. Ad.

Der Herr Gott der dich allein besetz und beschüt, das
 Land unsrer die Hand abstatel, so laß dich dich ab, ich se
 " " ich dich mit, Thra " " um mit Thra um, dich mit Thra " " "
 " " um, die einig sein " " dich dich von uns dich dich ab, dich " um. *B. Solo.*
Cap. Unser trüb, unser trüb " sel die Zeit " " dich
 " " dich dich als Zeit " " dich dich dich dich dich dich
 wichtige und über dich dich dich wichtige Freude, über dich dich dich
 wichtige Freude dich. *Cap.* dich dich dich dich dich dich dich
 dich dich dich dich dich dich dich dich dich dich dich dich dich
 dich dich dich dich dich dich dich dich dich dich dich dich dich
 dich dich dich dich dich dich dich dich dich dich dich dich dich
 dich dich dich dich dich dich dich dich dich dich dich dich dich
 dich dich dich dich dich dich dich dich dich dich dich dich dich
 dich dich dich dich dich dich dich dich dich dich dich dich dich
 dich dich dich dich dich dich dich dich dich dich dich dich dich



Cor cap.

Handwritten musical score for a piece titled "Cor cap.". The score is written on a system of four staves. The first staff is the vocal line with lyrics in German: "Hilf Gott der höchsten Sat dem die Ihu lieb haben, Amos a''". The second staff contains rhythmic markings: "|| am || a'' || am || || a'' ||". The third staff is another vocal line with lyrics: "Hilf Gott der höchsten Sat dem die Ihu lieb haben, Amos a''". The fourth staff contains rhythmic markings: "|| am || ||". The score includes various musical notations such as notes, rests, and dynamic markings like "piano".

Alto.

48.

Die Herrlichkeit
 des Himmels
 und der Erden
 ist offenbar
 geworden durch
 die Geburt eines Kindes
 und durch die
 Jesu Christi
 Ankerung
 in der Welt.

Die Herrlichkeit
 des Himmels
 und der Erden
 ist offenbar
 geworden durch
 die Geburt eines Kindes
 und durch die
 Jesu Christi
 Ankerung
 in der Welt.



6

Mus. 2115-E-505



2. Cor cap.

Ohrsch. Broderleinlein, Ich bin ein Jhr Erb Jahn, Amm a''
 " " my Amm a''
 " " my Amm a''
 Cap. piano.
 " " my

A2
 ID3 B4 104 1A4119 CS1A5
 A01 P41 A41 C41 B4 L31 A31

Tenore.

3.
Gott, was Erb...
" " " " " "

2.
" " " " " "

27.
" " " " " "

Sopr.
Ourschuld
" " " " " "

14.
" " " " " "

24.
" " " " " "

Alto.
" " " " " "

2.
" " " " " "

1.
" " " " " "

4.
" " " " " "

Amor an
" " " " " "

4.
" " " " " "



Basso.

40.

Sol.

Musical staff with notes and clef.

* Die Welt mit dem Götterdienst, so müde so dich,

Musical staff with notes and clef.

* ohne Anfang " " Ding ungestalt nicht Gebirg, auf der Welt. Sol.

Musical staff with notes and clef.

* ungestalt, ungestaltet berührt in der Welt. Unser Trübsal

Musical staff with notes and clef.

* Die Zeitlich d. Erigte in. Erigte ist, die Zeit " " " "

Musical staff with notes and clef.

* auf in. Erigte ist Hoffman nicht nur über

Musical staff with notes and clef.

* alle maßen rufftige Freiheit ist über alle maßen rufftige Freiheit. Sol.

Musical staff with notes and clef.

* die Atom. Alto Sol. Solig - - ist der Mann, solig

Musical staff with notes and clef.

* - ist der Mann von die Anfang der Welt.

Musical staff with notes and clef.

* In nach dem berührt ist, wieder die Atom ist

Musical staff with notes and clef.

* Erbe ungestalt. In nach dem berührt ist, wieder

Musical staff with notes and clef.

* die Atom ist Erbe ungestalt.



Handwritten musical score on a single page. The top staff is a vocal line with lyrics in German: "Oberste Gottesknechte, die dem Herrn die Hände führen, Solo". The second staff is a keyboard accompaniment with a treble clef and a key signature of one sharp (F#). The third staff is a bass line with a bass clef and a key signature of one sharp. The fourth staff is another bass line with a bass clef and a key signature of one sharp. The music is written in a cursive hand. There are some markings like "Cap." and "Al." in the second and third staves. The bottom half of the page contains several empty staves.

22. 16. 10. 5.

Sopran in Lizen.

Ihr, wenn Trübsal
 Sie Zeitlich und leicht ist, Sie
 Zeitlich und leicht ist, Sie
 ist, geschaffen nur zeitlich, und über alle
 Massen zeitliche Gerechtigkeit über alle Massen, zeitliche Gerechtigkeit
 Zeitlich, selig ist, der Mann, der Sie an
 Christus hingewandt, "Ich, Wieder Sie Kreuz der Leiden empfa
 hen, dem, nachdem er versprochen ist, wieder Sie Eueres Ich Leiden

Mus. 2115-E-504



4. 8.

Wohlge Gott bewirkt hat unser, die ihu lieb
 gahn, Amm, a, "mm, Amm, a" "mm, " "mm, " "mm, "
 Wohlge Gott bewirkt hat
 Ihm die ihu lieb hat, Amm, Amm, a, mm
 piano
 Amm.

12

12

Also in Lips.

22. 26. 10. 5.

Mus. 2115-E-504



Handwritten musical notation on two staves. The top staff begins with a treble clef, a key signature of one sharp (F#), and a 3/4 time signature. The music consists of a series of notes, some with stems and beams. Below the notes are handwritten annotations: "mp fa" with a slur, "1. 2. 3. 4." above the first few notes, and "Lun, Lun, Lun" with slurs and accents. The bottom staff continues the musical notation with similar notes and stems, and includes the handwritten word "Lun" at the end.

22. 16. 10. 5.

Tenore in Rip.

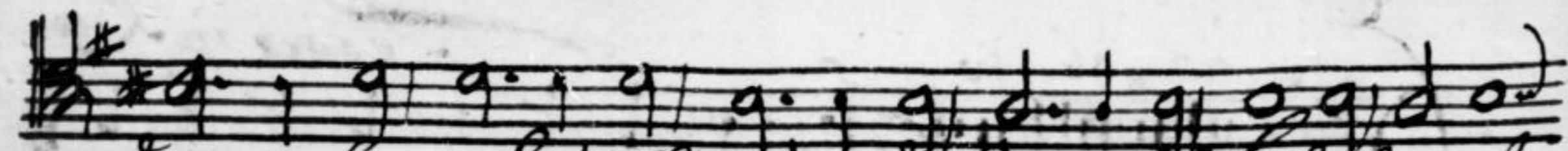
Die Zeitlich - und leicht
 ist, die Zeitlich und leicht Zeit, flasset mich weise
 und über aller maß, weisliche Gerechtigkeit, über alle
 maß, weisliche Gerechtigkeit. Solig solig
 ist der Mann, der die Aufsehung erduldet,
 hinder die Erwunden Lebensmühsal, Drum nach,

Mus. 2115-E-504

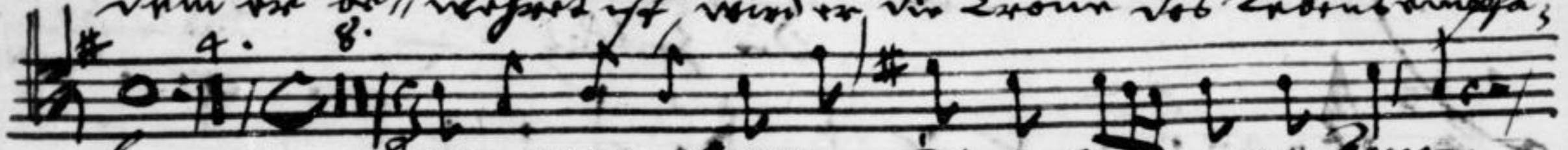


15





Im vorber, verfort ist, wird er die Exone des Erbenungsfa,



4. 8. *gan.* Amm, amm, amm a" "mm, amm,



piano. Amm, amm, a" mm, Amm, Amm Amm, a" mm.



22. 16. 10. 5.

nur, wenn Erbsaal. Die Zeitlich, — und kürzte ist,

 die Zeitlich und kürzte ist, schaffet eine gewisse und über

 alle Maß, weisliche Gerichtigkeit, über alle Maß, weisliche Gerichtig-

 keit. Solig — ist der Mann, der die Aufsteigeren,

 bildet. Wird er die Exone des Erbes empfangen, dann nach

 dem er beneidet ist, wird er die Exone des Erbes empfangen.

 Am, A — — — — — Am

Mus. 2115-E-504



piano.

G, A, B, C, B, A, G, F#, E, D, C.

Violino I.

Handwritten musical score for Violino I. The score consists of 11 staves of music. The first staff begins with a large, decorative initial 'D' and the text 'See, vom Erübel'. The music is written in a single system with a treble clef and a key signature of one sharp (F#). The notation includes various rhythmic values, accidentals, and dynamic markings. There are several numbered first and second endings (1., 2., 3., 5., 6.) throughout the piece. The final staff ends with a double bar line and a fermata.



Mus. 2115-E-504

19

Handwritten musical notation on four staves. The first staff contains a melodic line with various note values. The second staff continues the melody with some rests and a "5." marking. The third staff shows a more complex rhythmic pattern with many beamed notes. The fourth staff begins with a "pian." marking and contains a few notes before ending with a double bar line.

Violino 2^o

Caro mio Dabul

The image shows a page of handwritten musical notation for Violino 2^o. The score consists of ten staves of music. The first staff begins with a large, decorative initial 'D'. The music is written in a single system with a key signature of one sharp (F#) and a common time signature (C). The notation includes various note values, rests, and dynamic markings. There are several performance markings, including first, second, and third endings, and a '5.' marking. The handwriting is in dark ink on aged paper.



Mus. 2115-E-504

Handwritten musical notation on three staves. The first staff contains a melodic line with various note values and rests. The second staff features a more complex rhythmic pattern with some notes crossed out. The third staff continues the melodic line and ends with the word "pian" written in cursive.

Viola I.

Handwritten musical score for Viola I. The score consists of 12 staves of music. The first staff begins with a large, decorative initial 'D' and the text 'Der vom Beispiel'. The music is written in a single system with various rhythmic values and articulations. Measure numbers 2, 3, 4, 5, 6, 7, 8, 9, 10, 11, and 12 are indicated above the staves. The notation includes notes, rests, and dynamic markings.



IB3 IB4 IC4 IA4 II CSIA5 ASIC5 B51 P4I A41 C41 B41 U31 A31

The image shows a page of handwritten musical notation on four staves. The top staff contains a melodic line with notes and rests. The second staff has notes and a large scribble. The third staff has notes and a large scribble. The fourth staff starts with the word "piano" and has a few notes before becoming mostly blank.

Viola 2a

Capriccio, vom Erubel, p

Handwritten musical score for Viola 2a, consisting of 14 staves of music. The notation includes notes, rests, and dynamic markings. The score is written in a cursive hand. The key signature has one sharp (F#) and the time signature is 2/4. The piece is marked 'Capriccio, vom Erubel, p'. The first staff begins with a large decorative flourish.



IDS 1B4 1C4 1A4 1E 1G 1A5
A51C51B51 D41 A41 C41 B41 D31 A31

Handwritten musical notation on three staves. The top staff contains a series of notes with a key signature of one sharp (F#). The middle and bottom staves contain more complex notation, including slurs and a 'piano' (piano) marking. A '5.' is written above the first measure of the middle staff.

Fagots.

Handwritten musical score for Bassoon (Fagots). The score consists of 13 staves of music. It begins with a large decorative initial 'D' and the word 'Fagots.' written in a cursive hand. The music is written in a key signature of one sharp (F#) and a 3/4 time signature. The notation includes various note values, rests, and dynamic markings. There are several measures with fingerings indicated by numbers 1-5. The score is written in a cursive hand.

Mus. 2115-E-504



ID3 IB4 IC4 IA4 IIA4 IIB4 IIC4 IIA5 IIB5 IIC5 IA5 IB5 IC5 IA6 IIA6 IIB6 IIC6 IIA7 IIB7 IIC7 IA7 IB7 IC7 IA8 IIA8 IIB8 IIC8 IIA9 IIB9 IIC9 IA9 IB9 IC9 IA10 IIA10 IIB10 IIC10 IIA11 IIB11 IIC11 IA11 IB11 IC11 IA12 IIA12 IIB12 IIC12 IIA13 IIB13 IIC13 IA13 IB13 IC13 IA14 IIA14 IIB14 IIC14 IA15 IIA15 IIB15 IIC15 IA16 IIA16 IIB16 IIC16 IA17 IIA17 IIB17 IIC17 IA18 IIA18 IIB18 IIC18 IA19 IIA19 IIB19 IIC19 IA20 IIA20 IIB20 IIC20 IA21 IIA21 IIB21 IIC21 IA22 IIA22 IIB22 IIC22 IA23 IIA23 IIB23 IIC23 IA24 IIA24 IIB24 IIC24 IA25 IIA25 IIB25 IIC25 IA26 IIA26 IIB26 IIC26 IA27 IIA27 IIB27 IIC27 IA28 IIA28 IIB28 IIC28 IA29 IIA29 IIB29 IIC29 IA30 IIA30 IIB30 IIC30 IA31 IIA31 IIB31 IIC31 IA32 IIA32 IIB32 IIC32 IA33 IIA33 IIB33 IIC33 IA34 IIA34 IIB34 IIC34 IA35 IIA35 IIB35 IIC35 IA36 IIA36 IIB36 IIC36 IA37 IIA37 IIB37 IIC37 IA38 IIA38 IIB38 IIC38 IA39 IIA39 IIB39 IIC39 IA40 IIA40 IIB40 IIC40 IA41 IIA41 IIB41 IIC41 IA42 IIA42 IIB42 IIC42 IA43 IIA43 IIB43 IIC43 IA44 IIA44 IIB44 IIC44 IA45 IIA45 IIB45 IIC45 IA46 IIA46 IIB46 IIC46 IA47 IIA47 IIB47 IIC47 IA48 IIA48 IIB48 IIC48 IA49 IIA49 IIB49 IIC49 IA50 IIA50 IIB50 IIC50 IA51 IIA51 IIB51 IIC51 IA52 IIA52 IIB52 IIC52 IA53 IIA53 IIB53 IIC53 IA54 IIA54 IIB54 IIC54 IA55 IIA55 IIB55 IIC55 IA56 IIA56 IIB56 IIC56 IA57 IIA57 IIB57 IIC57 IA58 IIA58 IIB58 IIC58 IA59 IIA59 IIB59 IIC59 IA60 IIA60 IIB60 IIC60 IA61 IIA61 IIB61 IIC61 IA62 IIA62 IIB62 IIC62 IA63 IIA63 IIB63 IIC63 IA64 IIA64 IIB64 IIC64 IA65 IIA65 IIB65 IIC65 IA66 IIA66 IIB66 IIC66 IA67 IIA67 IIB67 IIC67 IA68 IIA68 IIB68 IIC68 IA69 IIA69 IIB69 IIC69 IA70 IIA70 IIB70 IIC70 IA71 IIA71 IIB71 IIC71 IA72 IIA72 IIB72 IIC72 IA73 IIA73 IIB73 IIC73 IA74 IIA74 IIB74 IIC74 IA75 IIA75 IIB75 IIC75 IA76 IIA76 IIB76 IIC76 IA77 IIA77 IIB77 IIC77 IA78 IIA78 IIB78 IIC78 IA79 IIA79 IIB79 IIC79 IA80 IIA80 IIB80 IIC80 IA81 IIA81 IIB81 IIC81 IA82 IIA82 IIB82 IIC82 IA83 IIA83 IIB83 IIC83 IA84 IIA84 IIB84 IIC84 IA85 IIA85 IIB85 IIC85 IA86 IIA86 IIB86 IIC86 IA87 IIA87 IIB87 IIC87 IA88 IIA88 IIB88 IIC88 IA89 IIA89 IIB89 IIC89 IA90 IIA90 IIB90 IIC90 IA91 IIA91 IIB91 IIC91 IA92 IIA92 IIB92 IIC92 IA93 IIA93 IIB93 IIC93 IA94 IIA94 IIB94 IIC94 IA95 IIA95 IIB95 IIC95 IA96 IIA96 IIB96 IIC96 IA97 IIA97 IIB97 IIC97 IA98 IIA98 IIB98 IIC98 IA99 IIA99 IIB99 IIC99 IA100 IIA100 IIB100 IIC100

piano