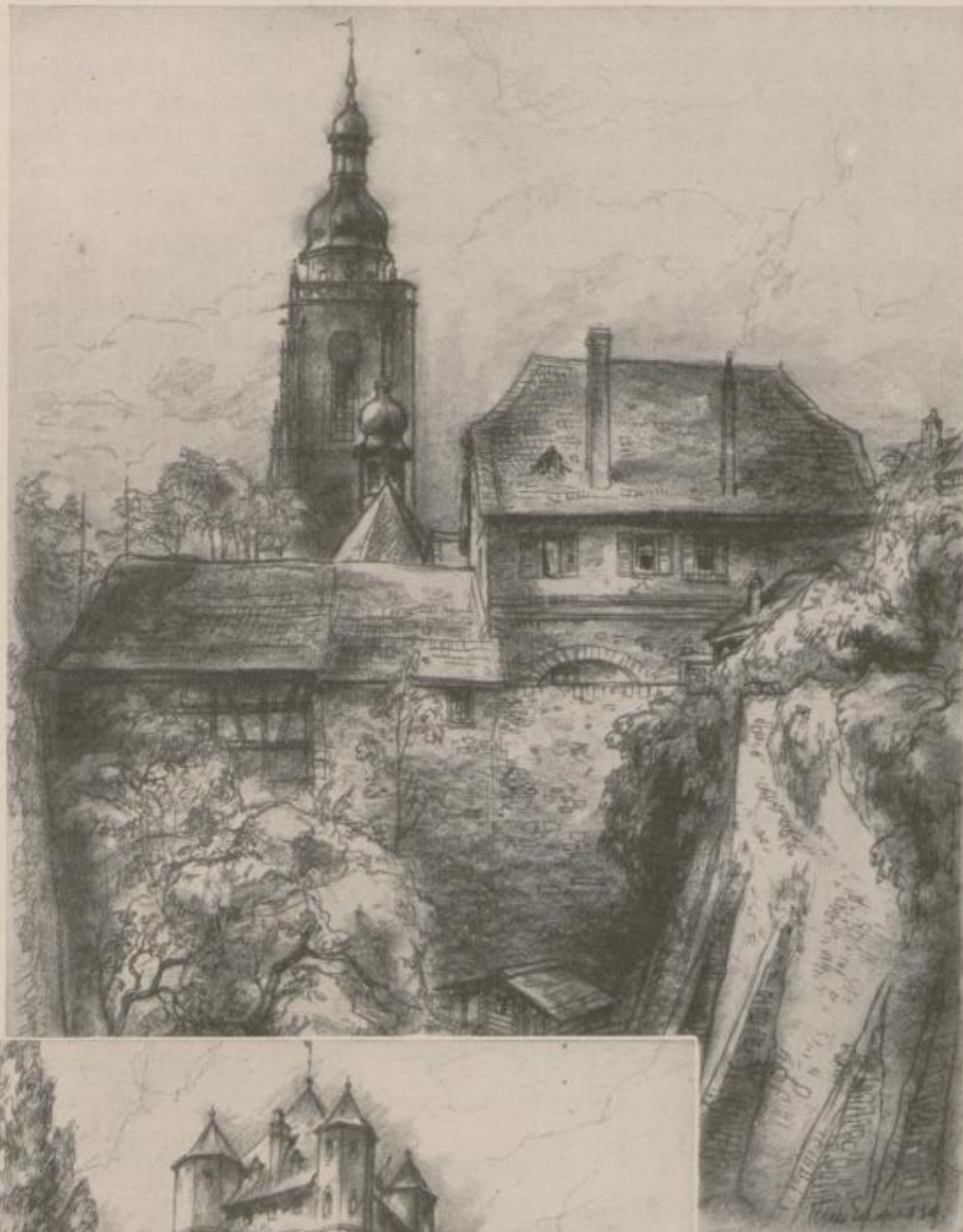


Nassau. The majority of the citizens supported the Archbishop; consequently, when Elector Adolf gained the victory those men were immediately dispossessed of their property and banished from the town. Gutenberg was probably one of the victims of these stringent measures. Later on Elector Adolf allowed the citizens to return to their town. Johannes Gutenberg was appointed to the Elector's retinue in January 1465. The document relating to the appointment was drawn up at Eltville on the Rhine where the Elector lived in his fortified Castle. It is extremely probable that Gutenberg now took up his abode



*Das Haus in Eltville a. Rhein,
in dem Gutenbergs Bruder
Friele Gensfleisch wohnte*
*The house at Eltville on the
Rhine the home of Gutenberg's
brother, Friele Gensfleisch*

*Zeichnungen Drawings
Richard Enders*

*Die Grafenburg in Eltville
am Rhein*
*The "Grafenburg" at Elt-
ville on the Rhine*