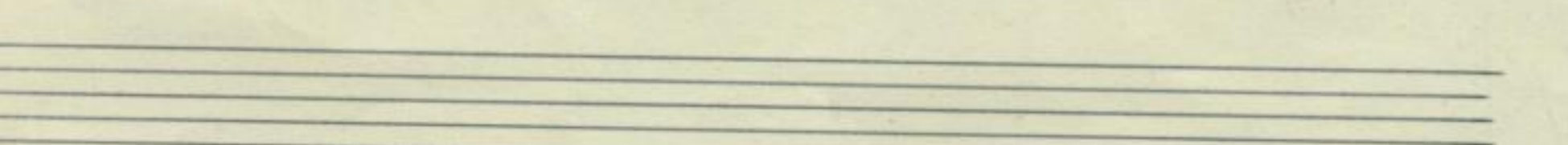
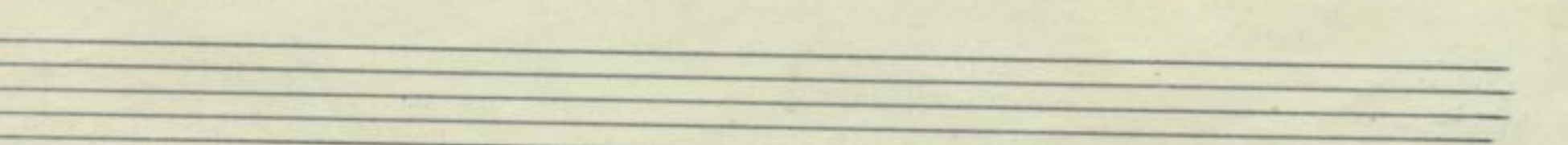
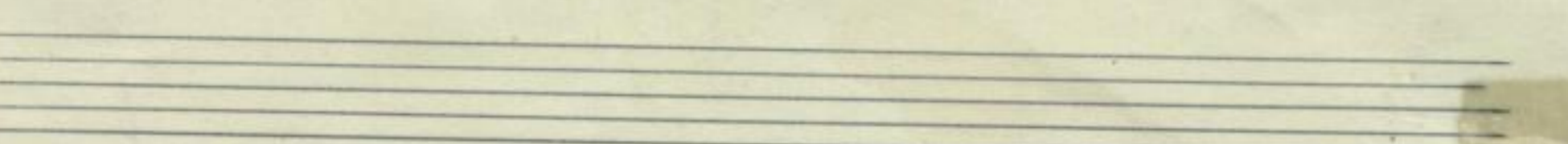
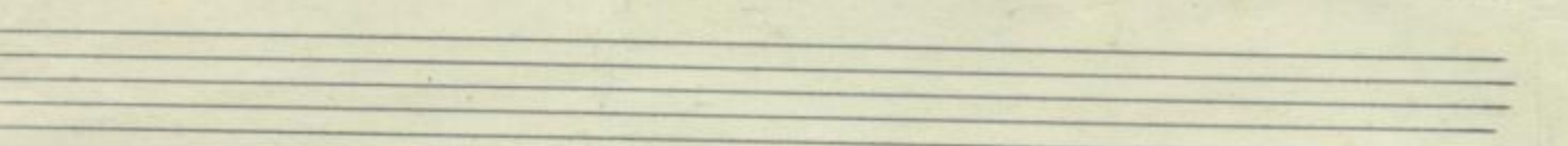
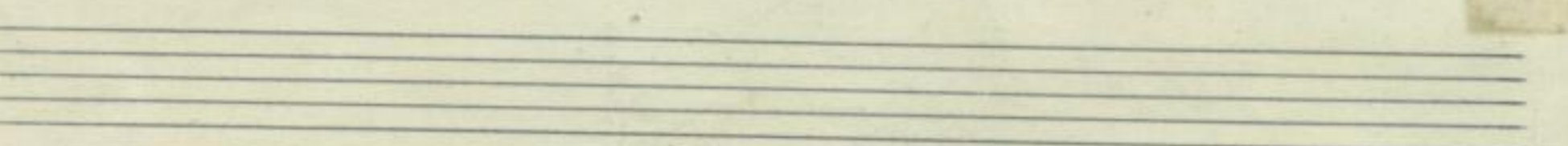
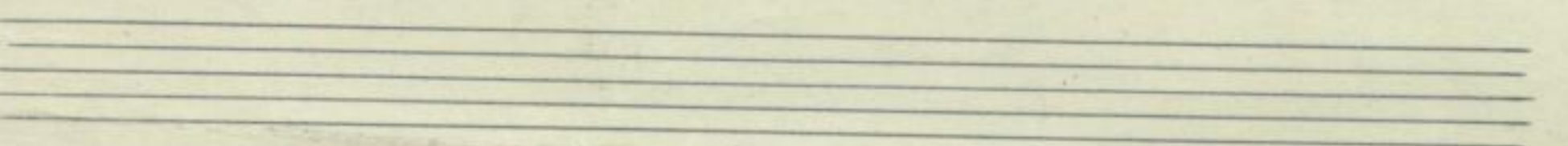
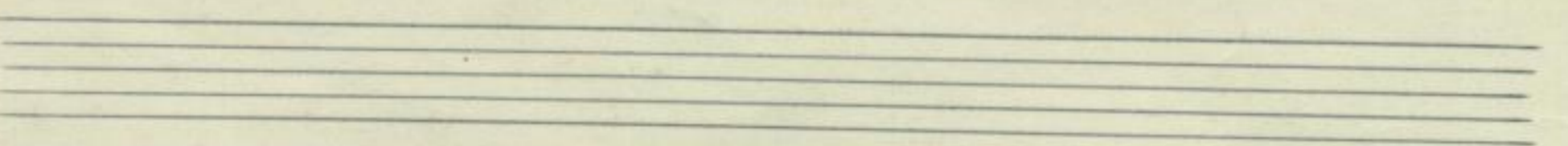
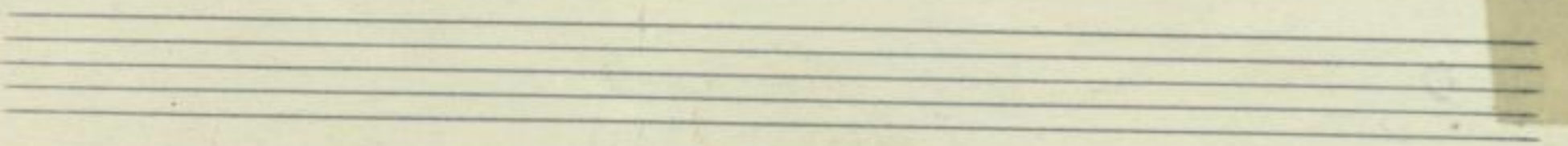
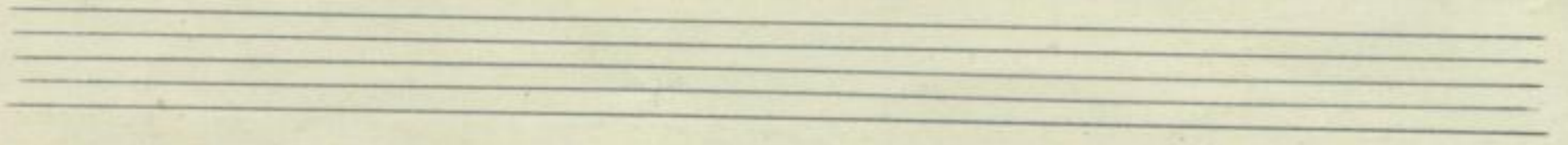
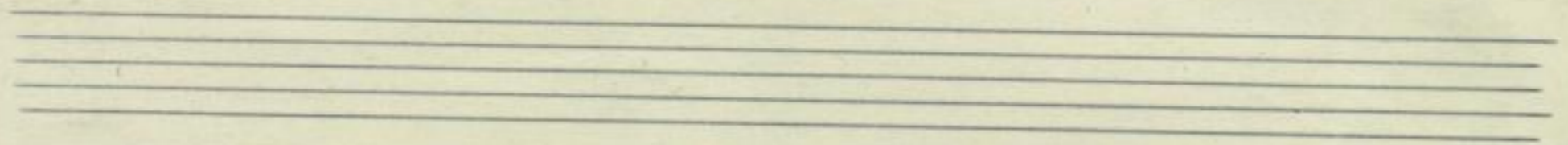


Partitur

"Nun laßt uns geh'n u. treten" 1

Mus. 11302-E-524,2.
(RMWV 231/2, Fsg.)





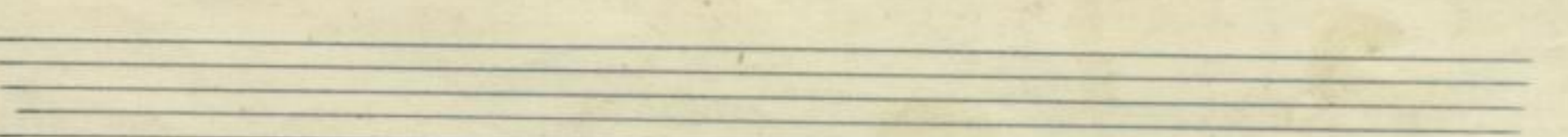
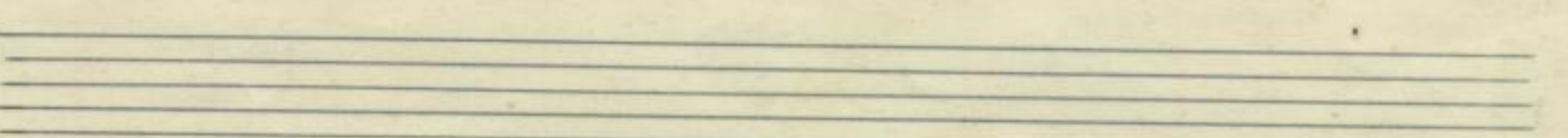
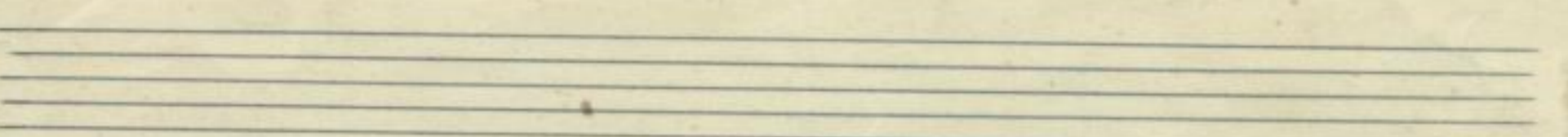
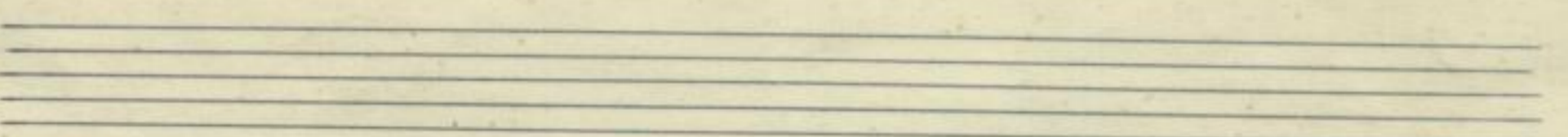
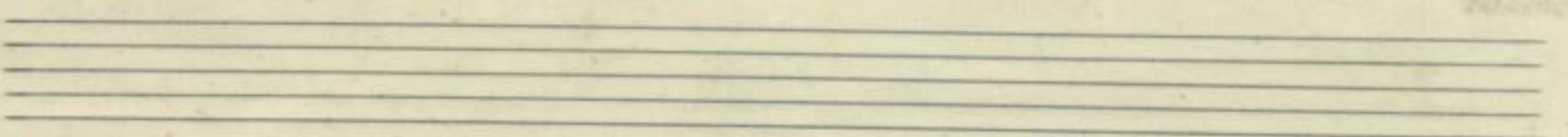
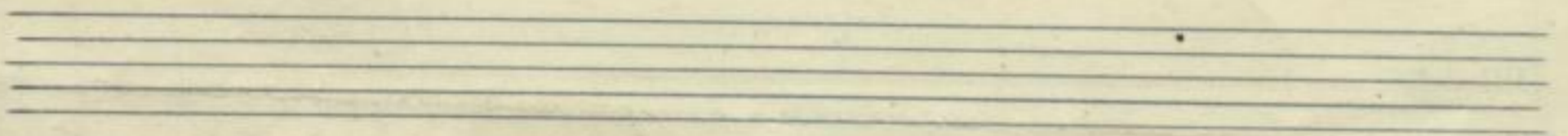
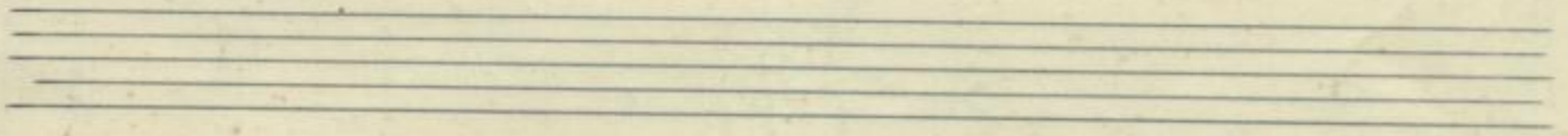
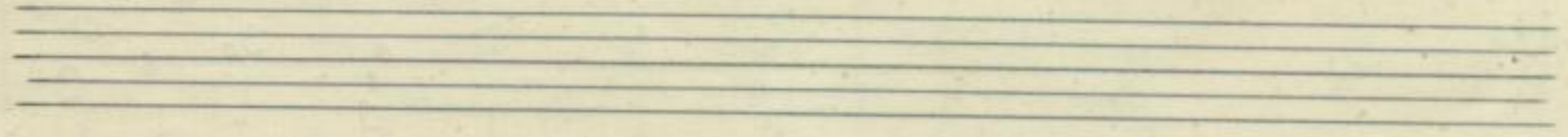
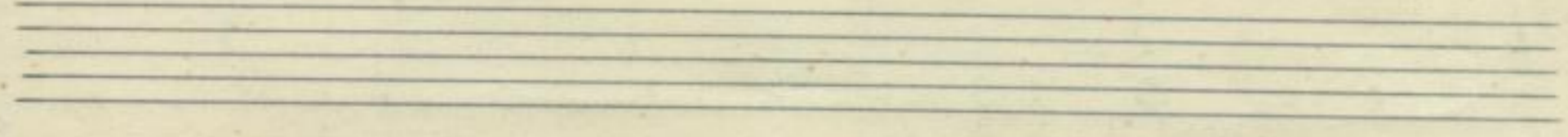
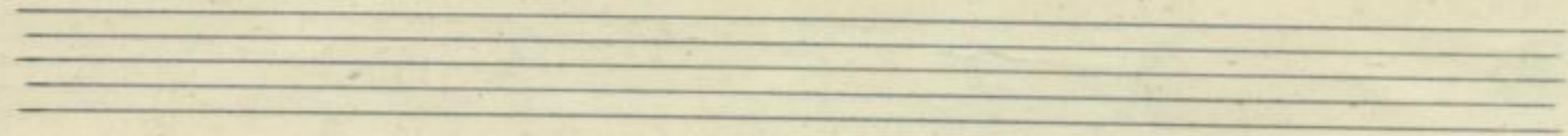
Trompeten

Posaunen

Fag.

Handwritten musical score for Trompeten, Posaunen, and Fag. (Bassoon). The score consists of three staves. The top staff (Trompeten) has a treble clef and contains notes with stems pointing up. The middle staff (Posaunen) has a bass clef and contains notes with stems pointing up. The bottom staff (Fag.) has a bass clef and contains notes with stems pointing up. The music is written in a common time signature. There are some markings like a double bar line and a sharp sign in the first measure of the top staff.

Four empty musical staves, each consisting of five horizontal lines, arranged vertically on the page.



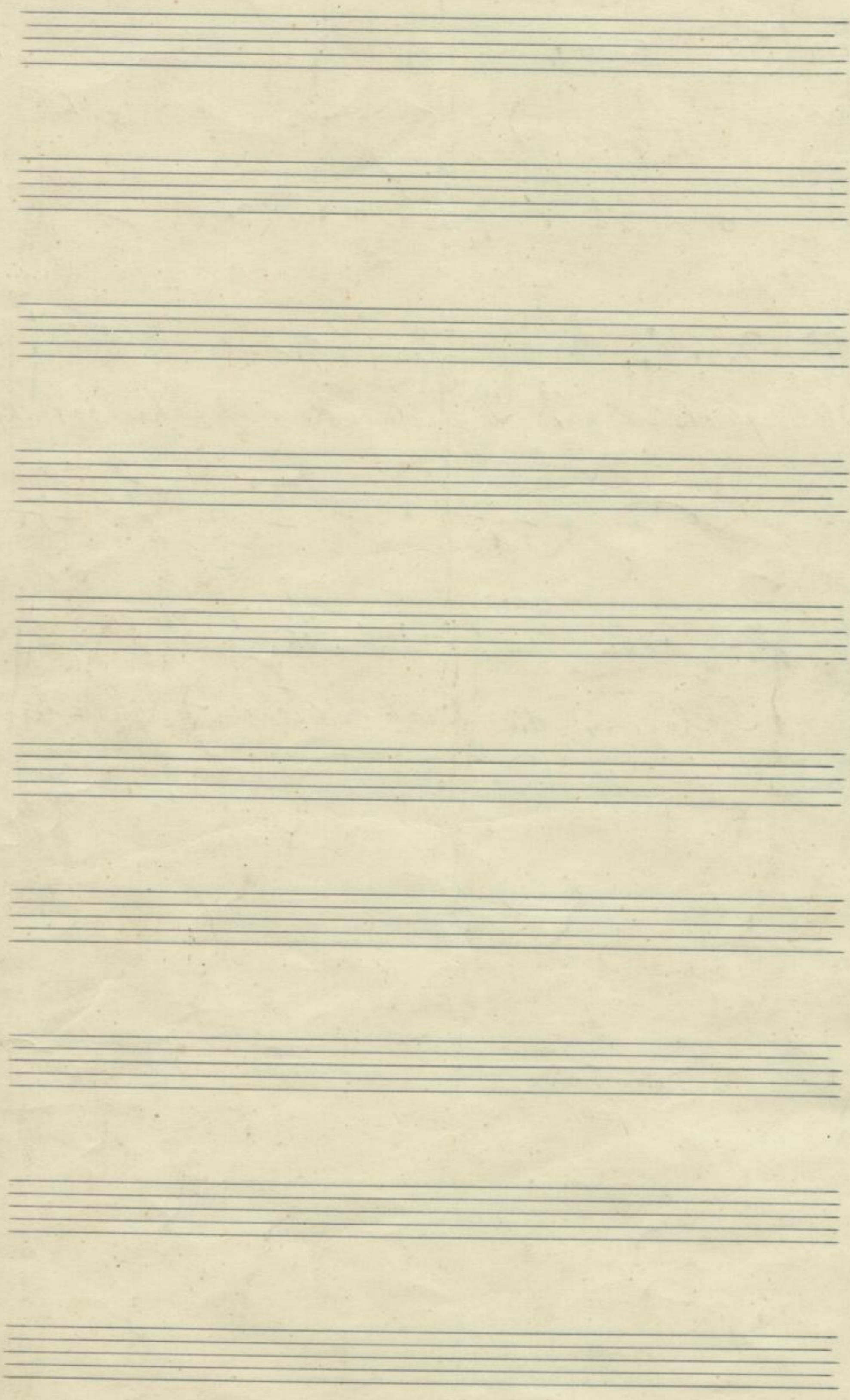
Knabenchor:

Hilf gnädig allen Knechten, gib

fröhliche Le-dankens den hochbetribenen

Seelen, die sich mit Schwermut gnähen,

4 Soprano
3 Alt
3 Tenor



Wir gehn da-hin u. wandern von

einem Jahr ganz an-der. Wir

leben und ge-dien = den vom Leben

zu dem Neuen.

3

Mus. 11302-E-524,2

Aut

