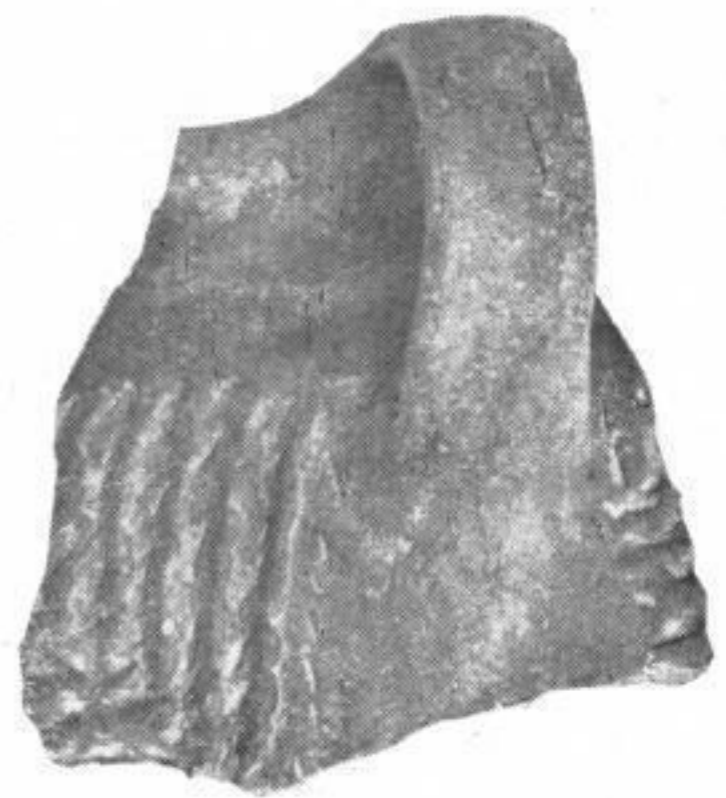




b



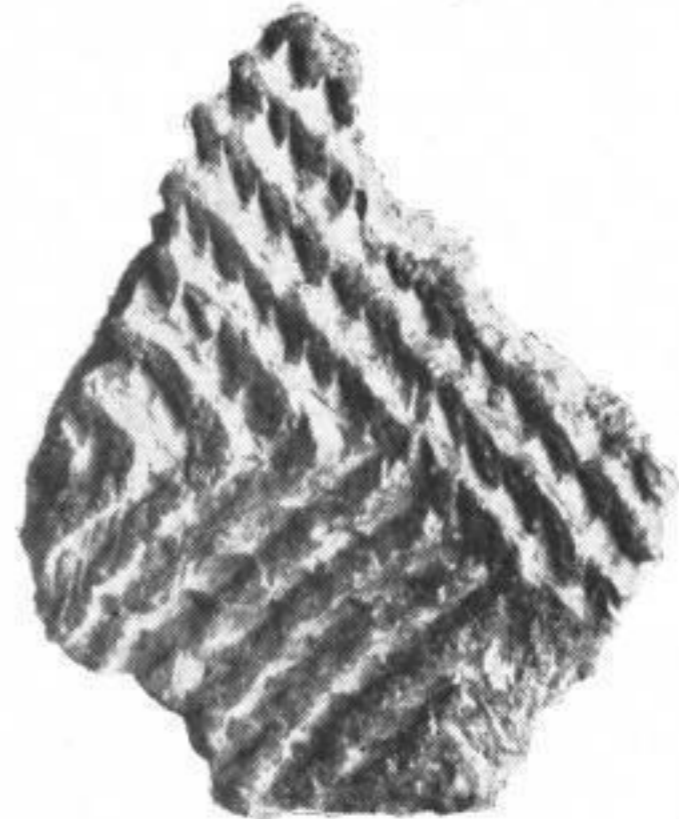
c

5 cm



a

5 cm



d

5 cm

Fundorte:

- a, b: Zeithain (Ah. Großenhain, Kh. Dresden),
- c: Börln (Ah. Grimma, Kh. Leipzig),
- d: Zeithain [?] (Ah. Großenhain, Kh. Dresden).

Kalenderberg-Keramik im Freistaat Sachsen.