

S
VII.
Sonata.

a 2.

2 Violini.

&

Continuo.



Mus. 2104-Q-4,4

630 130



15

*Gi.
Corelli.*

III

1780

11

1780

1780



Violino. 1^{mo}

Conata *largo.*

Handwritten musical notation on a single staff.

Handwritten musical notation on a single staff.

Handwritten musical notation on a single staff, ending with a double bar line and a repeat sign.

Handwritten musical notation on a single staff.

Handwritten musical notation on a single staff.

Handwritten musical notation on a single staff.

Handwritten musical notation on a single staff, with some ink blots.

Handwritten musical notation on a single staff.

Sarabanda. *Vivace.*

Handwritten musical notation on a single staff, ending with a double bar line and the word "Folti".

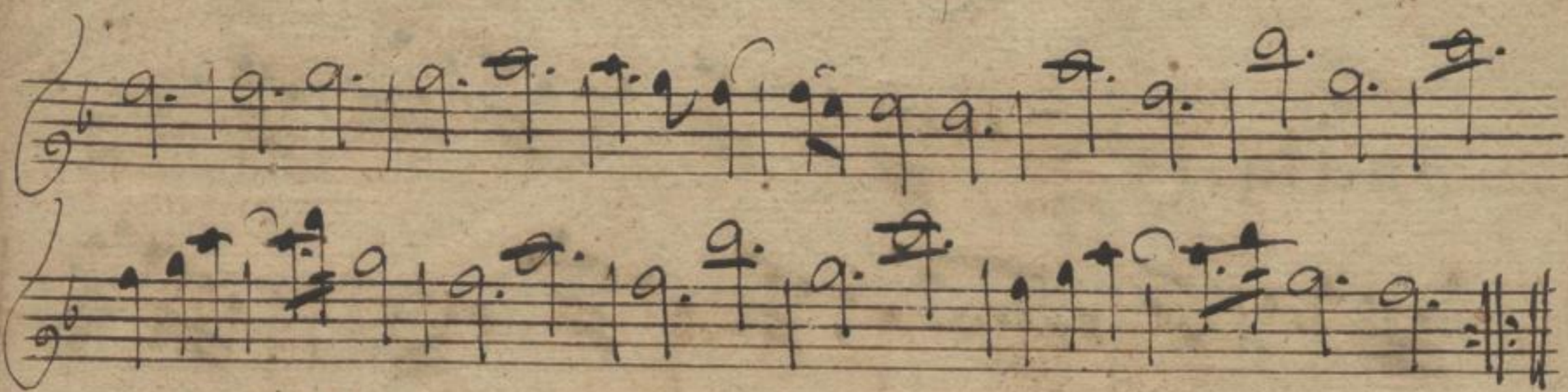


La 130

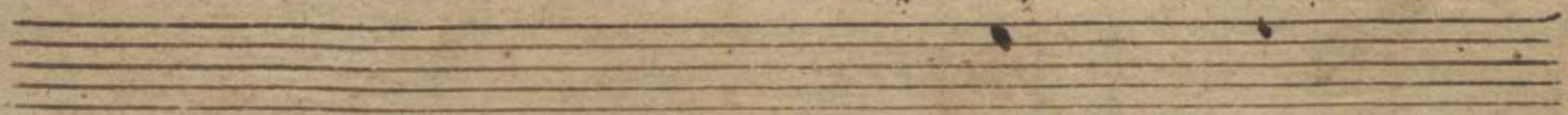
SLUB
Dresden

46

Mus. 2104-Q-44



Giga. *allegro.*

Handwritten musical notation for a piece titled "Giga." The tempo marking "allegro." is written above the first staff. The notation is dense and fast-moving, consisting of ten staves. It features a variety of note values, including sixteenth and thirty-second notes, often beamed together. The music is written in a treble clef with a common time signature. There are some ink stains on the paper, particularly on the right side of the staves.

2104
1784

Violino. 2do

Sonata.

largo.

Handwritten musical notation for the first section of the Sonata, consisting of three staves of music in G major and 3/4 time. The notation includes various note values, rests, and dynamic markings.

vivace.

Handwritten musical notation for the second section of the Sonata, consisting of three staves of music in G major and 3/4 time. The notation includes various note values, rests, and dynamic markings.

grave.

Sarabanda

vivace.

Handwritten musical notation for the Sarabanda section, consisting of two staves of music in G major and 3/4 time. The notation includes various note values, rests, and dynamic markings.



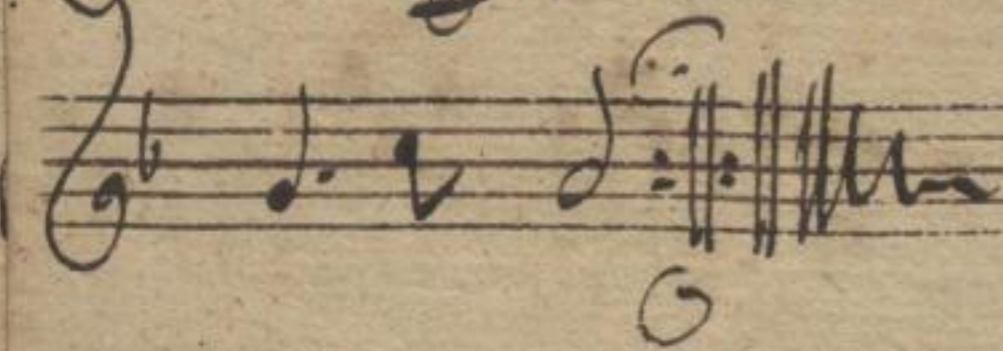
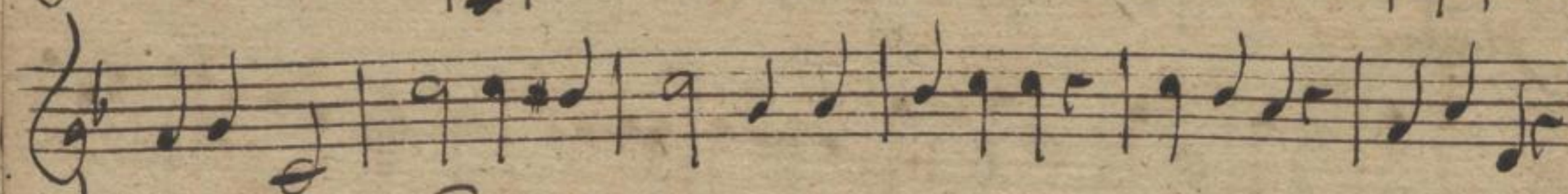
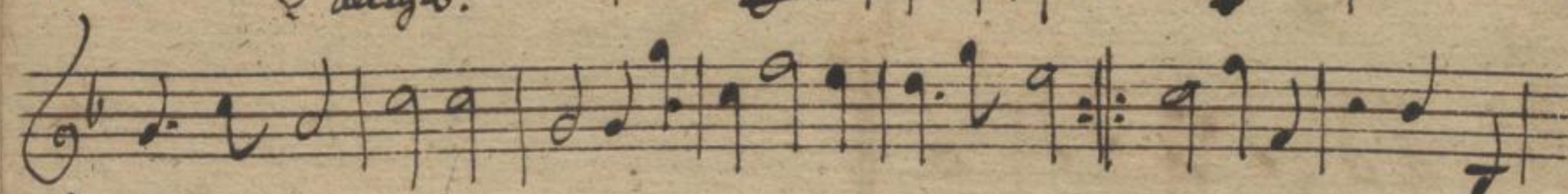
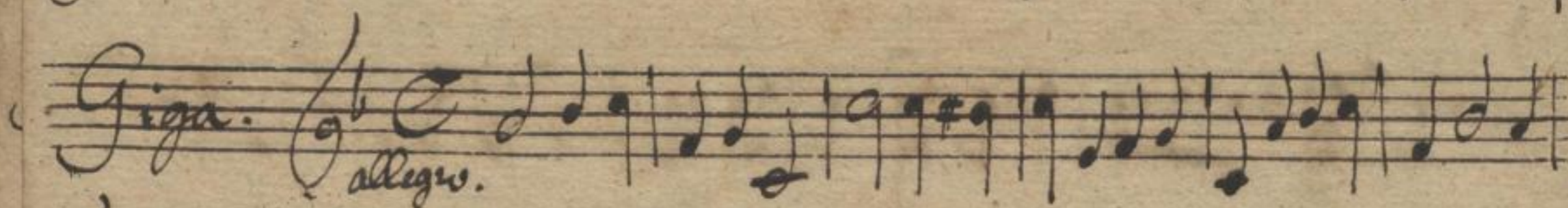
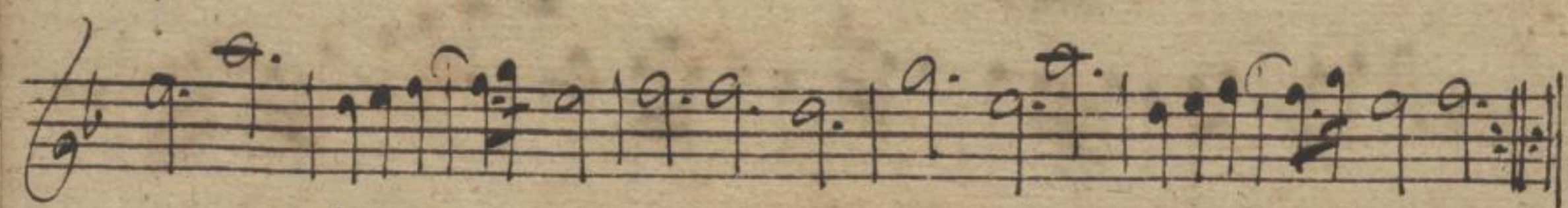
alto

Ca 130



17

Mus. 2104-Q-44



2104
Mus.
214

Continuo.

Sonata.

Preludiu. largo.

Vivace.

Grave.

Sarabanda.

Vivace.



La 130

SLUB
Dresden

18

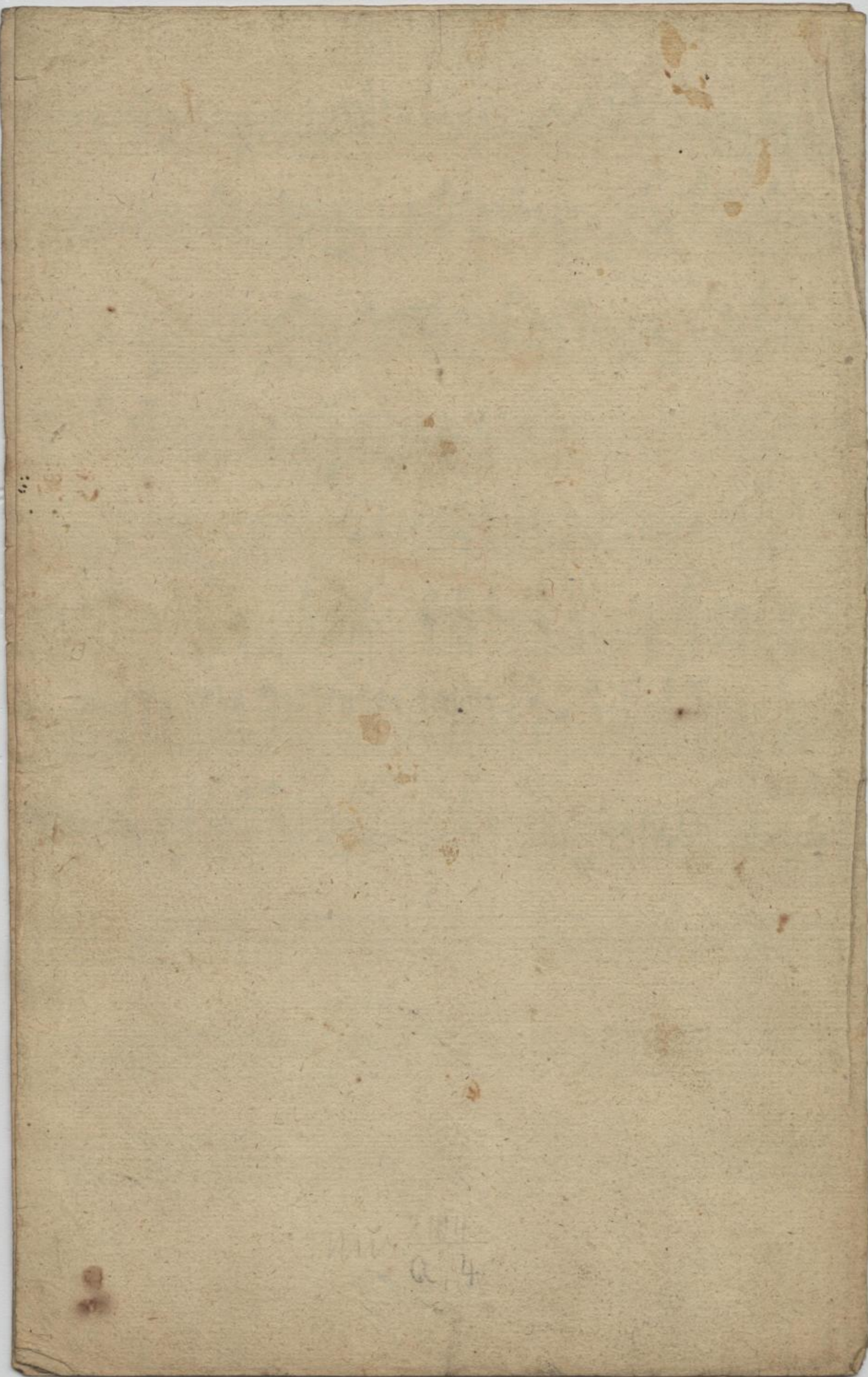
Mus 2104-Q-4.4

Musical notation on four staves. The first three staves contain a melodic line with various ornaments and a tempo marking *pianw.* (piano). The fourth staff concludes the section with a double bar line and repeat dots.

Musical notation on four staves. The first staff is labeled *Giga* and *allegro*. The notation features complex rhythmic patterns, including sixteenth and thirty-second notes, and includes numerous fingerings (e.g., 6, 7, 5, 6, 7, 5, 6, 3) and dynamic markings.

Four empty musical staves, indicating the end of the written music on this page.

2107
RT4



1720
G



Continuo.

x

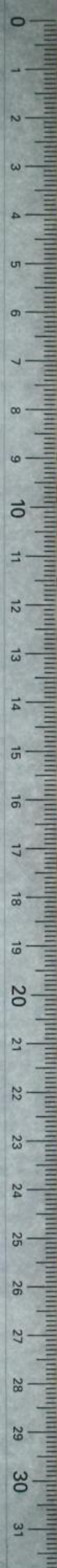
2 Volumi.

17

onata.

VII.





Handwritten musical score on aged paper, consisting of 11 staves. The notation is dense and includes various musical symbols such as notes, rests, and clefs. The paper shows signs of age, including foxing and a large dark stain on the left side.

Handwritten annotations include:

- Andante* written above the second staff.
- Andante* written below the sixth staff.
- Andante* written below the tenth staff.
- Andante* written below the eleventh staff.

Andante