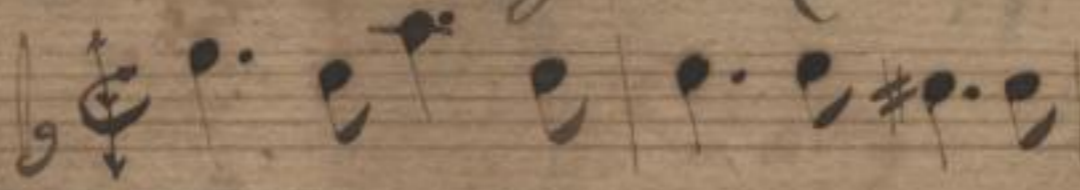


Schrancke No. II.
20. Fach 32. Lage

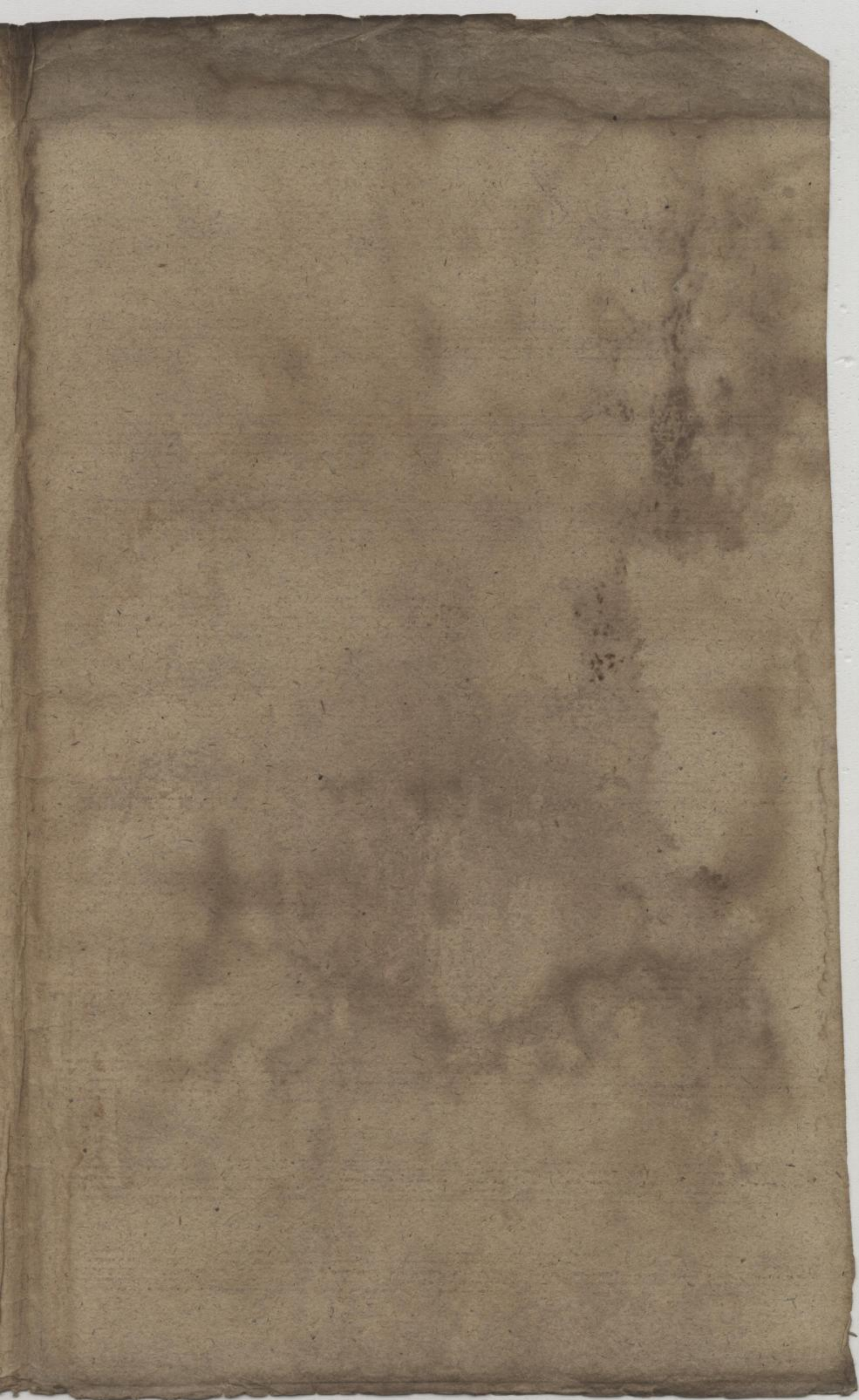
W. Ob. Fl. & Bass
Del. Sig. Pätz. H. St.



Musica	
2026	
n	7

Sächs.
Landes-
Bibl.

4



Ouverture

Handwritten musical score for an Overture, consisting of 14 staves of music in a single system. The notation includes various note values, rests, and dynamic markings.

Final musical notation on the page, including a double bar line and a fermata.

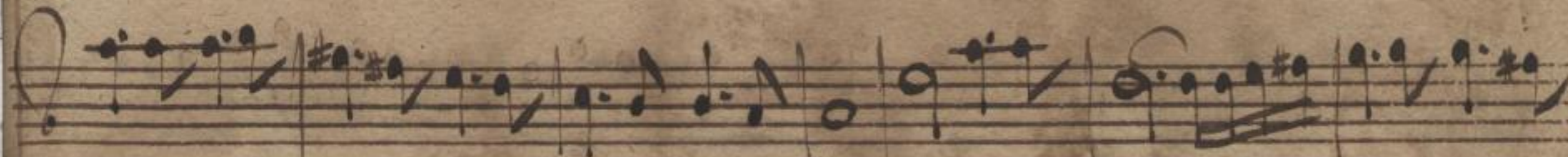
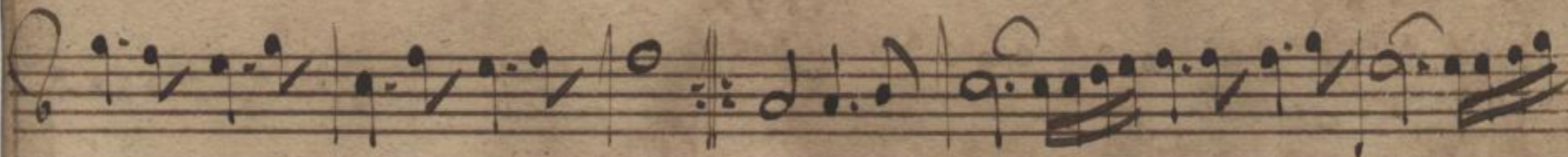
(82756 (1-14))



Ferte

4 Mus. 2026-N-7
5

Entre

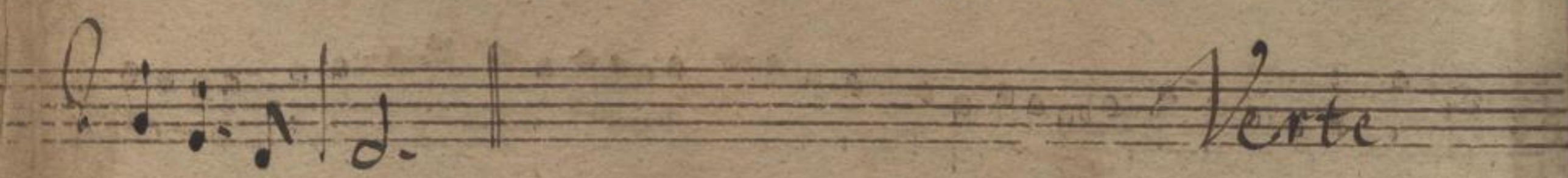
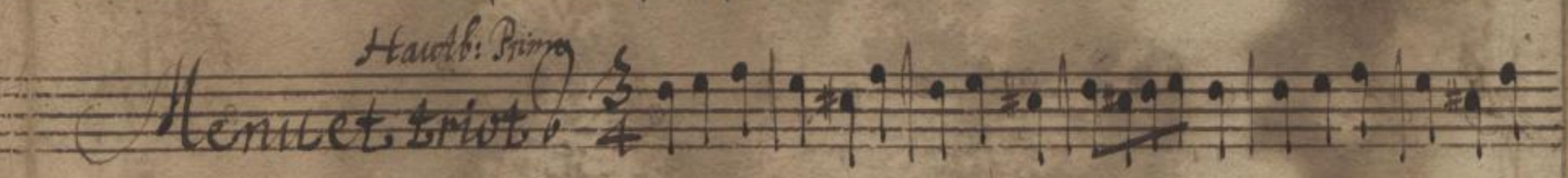
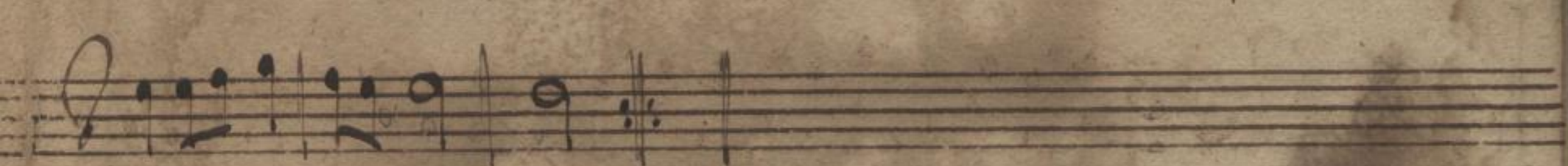
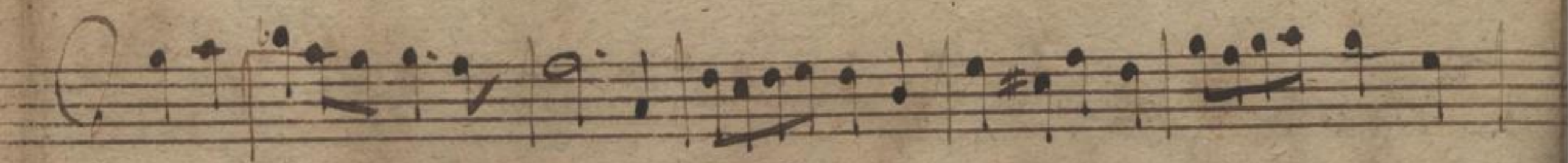


Aria



Rondeau





Verte

2
7

Gig

Handwritten musical score on six staves. The first staff begins with the word "Gig" in cursive. The notation is in a single system with a treble clef and a 3/8 time signature. The music consists of six staves of handwritten notes and rests. The paper is aged and shows some staining.

Ouverture

Haut. (Entre)

Handwritten musical score for Haut. (Entre). The score consists of ten staves of music. The notation includes various note values, rests, and dynamic markings. The paper shows signs of age and staining.

Entre

Handwritten musical score for Entre. The score consists of three staves of music. The notation includes various note values, rests, and dynamic markings. The paper shows signs of age and staining.

(67456)

Mus. 2026-N-7

7
13

Sächs.
Landes-
Bibl.

Aria

Handwritten musical notation for the first system of the Aria, consisting of two staves with notes and rests.

Rondeau

Handwritten musical notation for the second system of the Rondau, consisting of two staves with notes and rests.

Da Capo.

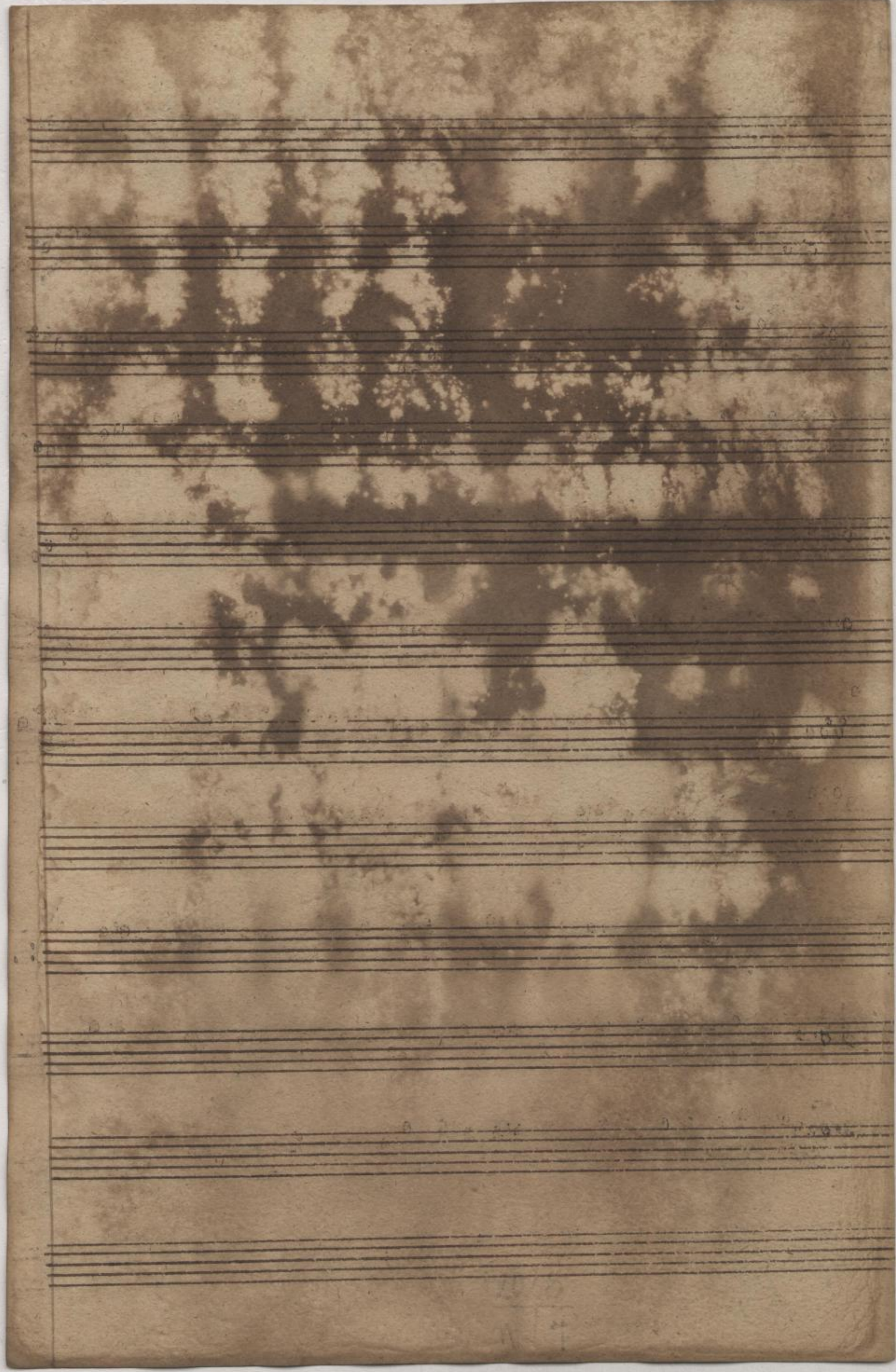
Menuet

Handwritten musical notation for the third system of the Menuet, consisting of two staves with notes and rests.

Trio tacet

Figure

Handwritten musical notation on five staves. The notation is in a single system, likely for a single instrument. It begins with a treble clef, a key signature of one sharp (F#), and a time signature of 8/8. The music consists of a series of eighth and sixteenth notes, with some rests and a final flourish. The paper is aged and shows significant water damage, particularly in the center and lower right.



Taille

Ouverture

Handwritten musical score for the first section, 'Ouverture'. The music is written on ten staves. It begins with a treble clef, a key signature of one sharp (F#), and a 3/4 time signature. The notation includes various rhythmic values, slurs, and dynamic markings. A 'piano' marking is visible on the eighth staff.

Entre

Handwritten musical score for the second section, 'Entre'. The music is written on three staves. It begins with a treble clef, a key signature of one sharp (F#), and a 3/4 time signature. The notation includes various rhythmic values and slurs.

Mus. 2026-N-7



(4756)

9
16

Aria

Handwritten musical notation for the first system of the Aria, including a treble clef, a 3/4 time signature, and a key signature of one sharp (F#). The notation consists of a single melodic line on a five-line staff.

pi. f.

Handwritten musical notation for the second system, labeled "Rondeau". It features a treble clef, a 6/8 time signature, and a key signature of one sharp (F#). The notation is more complex, with many beamed notes and slurs.

Handwritten musical notation for the third system, labeled "Menuet". It features a treble clef, a 3/4 time signature, and a key signature of one sharp (F#). The notation is simpler, with mostly quarter and eighth notes.

Menuet mit Faßet

Gigue

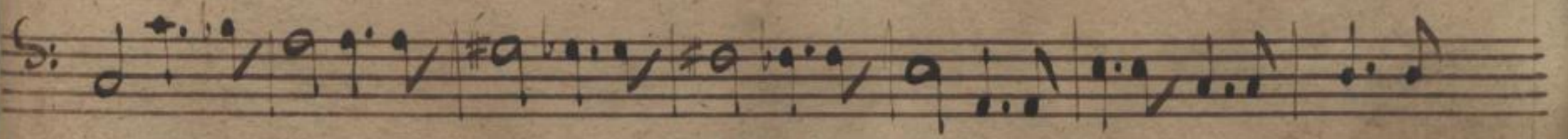
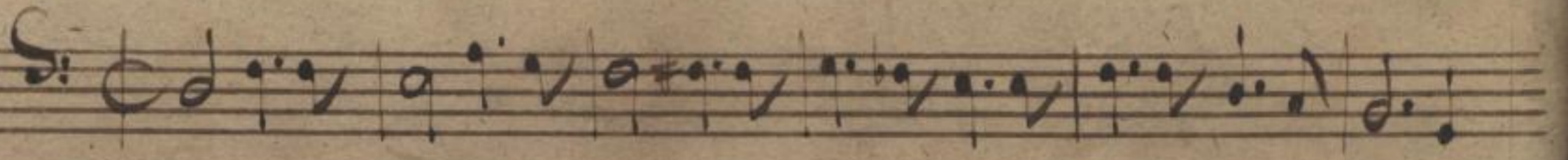
Handwritten musical score for a Gigue, consisting of five staves of music. The notation is in a single system, likely for a lute or similar instrument, given the treble clef and the presence of a sharp sign. The music is written in a cursive hand and includes various rhythmic values, accidentals, and a repeat sign. The paper is aged and shows some staining.

10
18

Handwritten text at the top right of the page, possibly a title or page number, which is mostly illegible due to fading.

Handwritten text at the bottom center of the page, possibly a date or signature, which is mostly illegible due to fading.

Ouverture



Mus. 2026-N-7



(8 x 756)

3
22

Entre

Aria

Rondeau

Mommet S: $\frac{3}{4}$

Mommet S: $\frac{3}{4}$

triot

Gig S: $\frac{6}{8}$

Suvertur

A handwritten musical score for a piece titled 'Suvertur'. The score is written on 13 staves of five-line music paper. It begins with a treble clef and a common time signature (C). The notation includes various rhythmic values such as eighth and sixteenth notes, as well as rests. The music features several melodic lines, some of which are more active than others. There are several sharp signs (#) indicating key signatures. The paper shows signs of age, including some staining and a small hole near the top right.

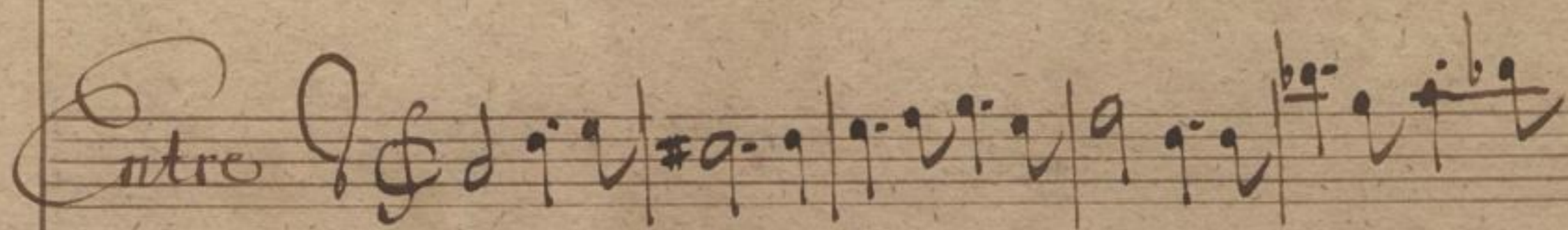
Sächs.
Landes-
Bibl.

Verte

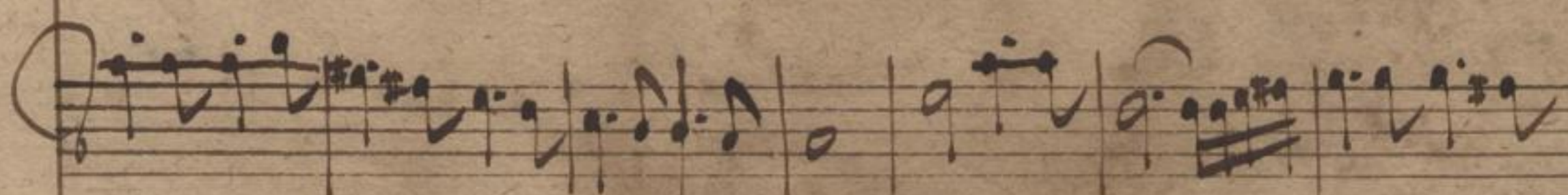
(68756)

Mus. 2026-N-7

5
9

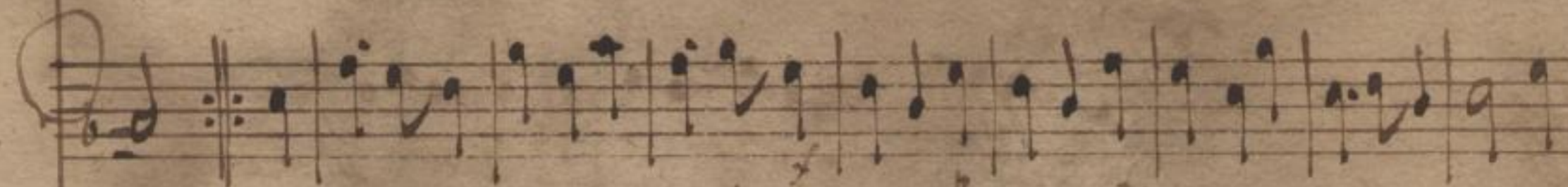
Entre 



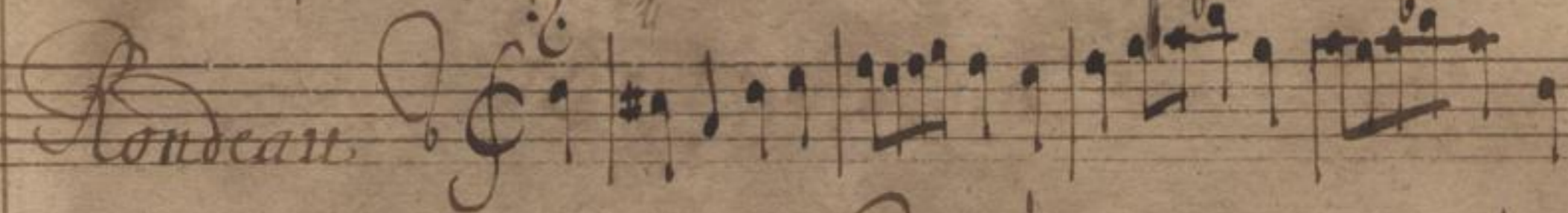


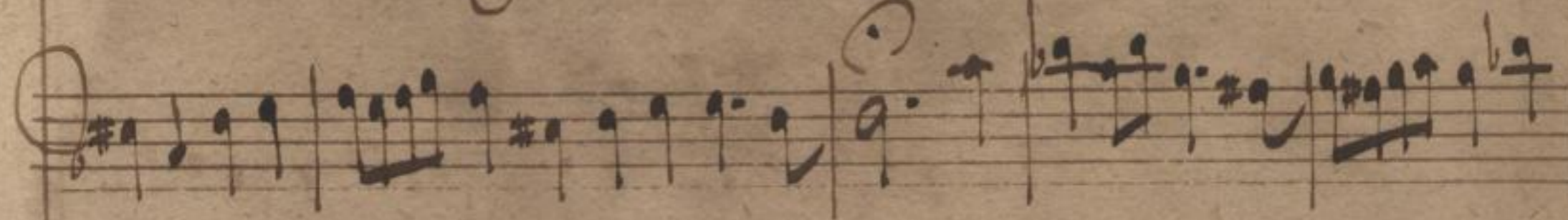


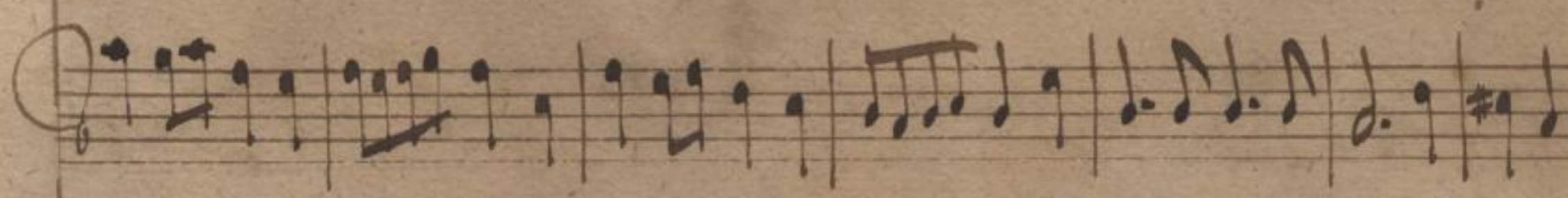
Aria 



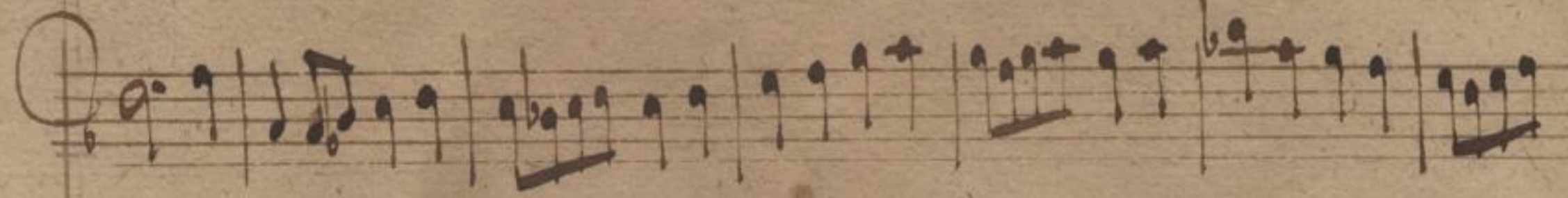


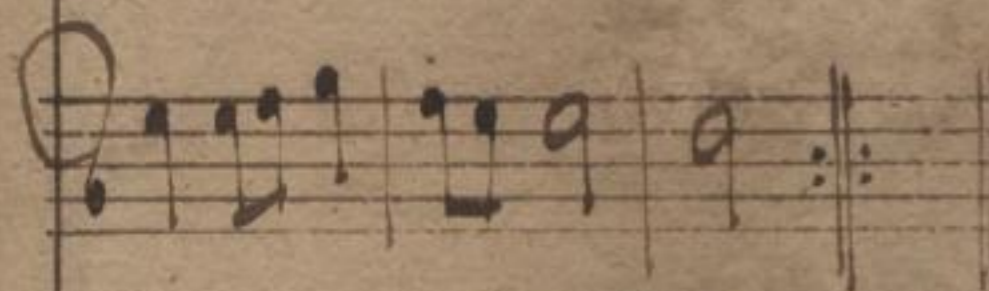
Rondeau 







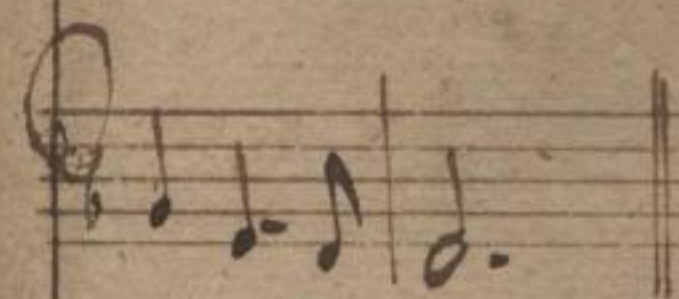
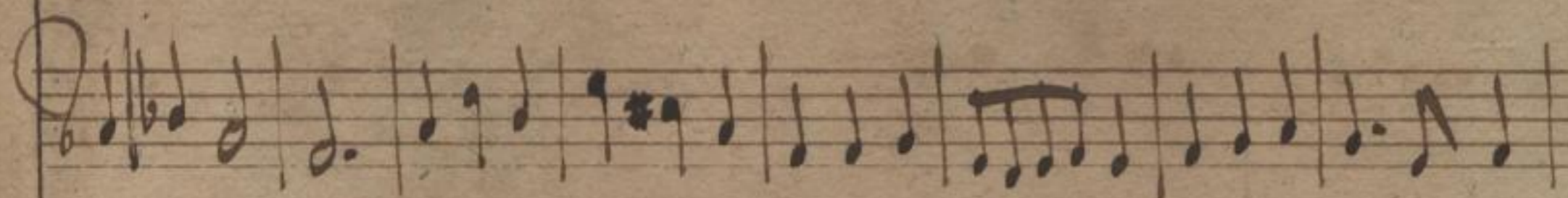
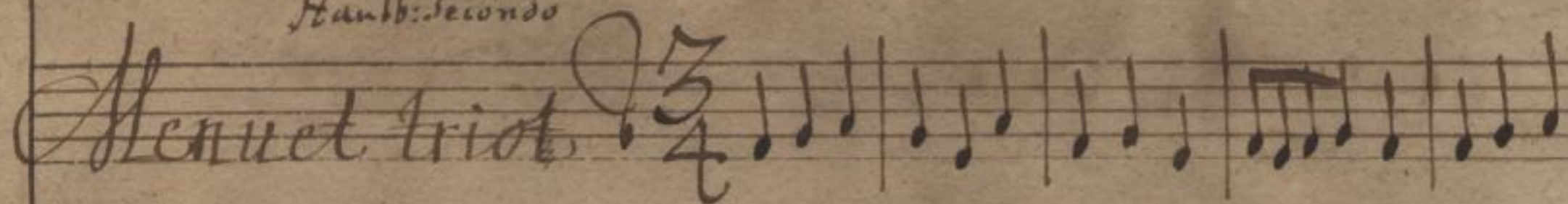




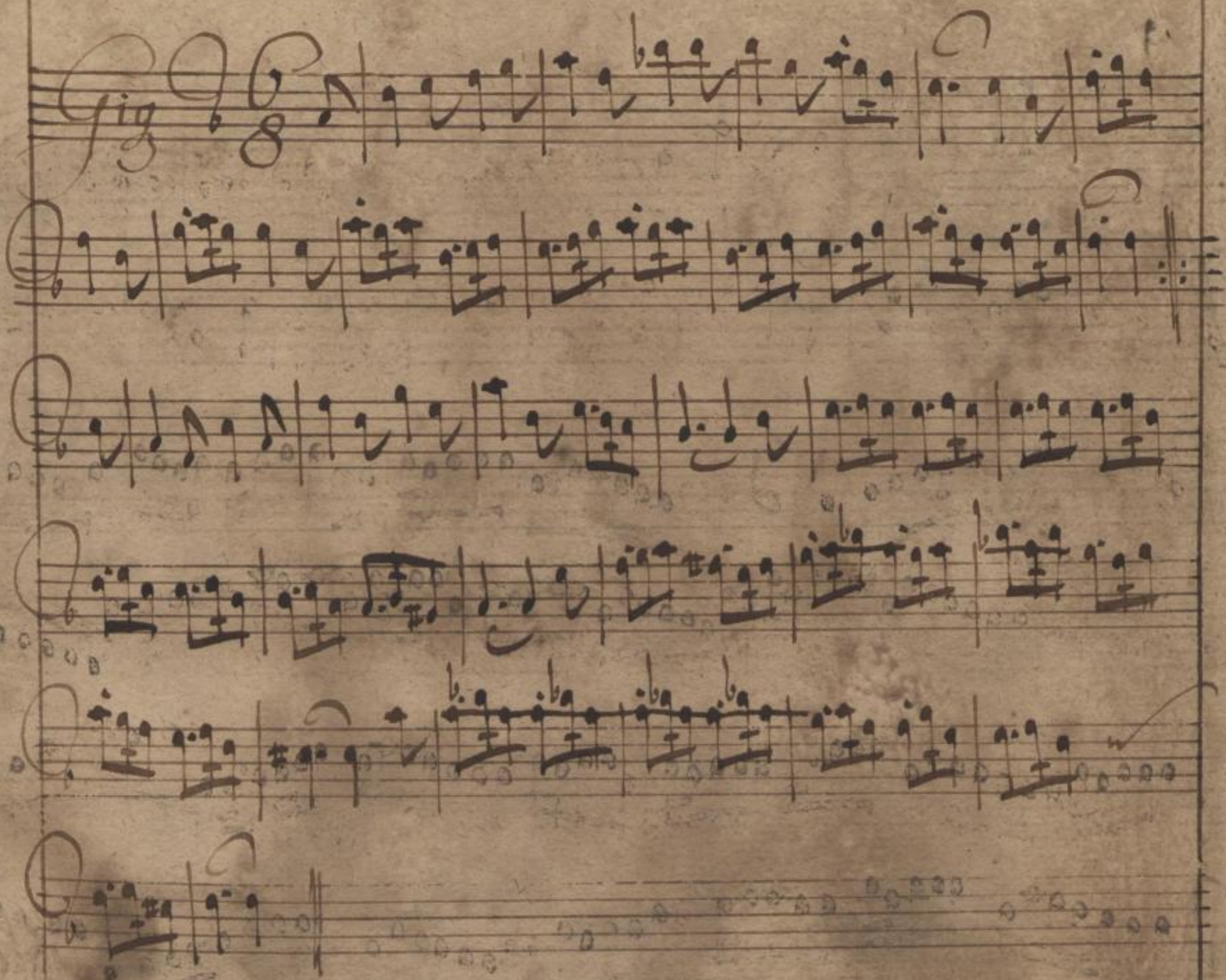
Hautb: Primo



Hautb: Secondo



Fine



Ouvertur

The image shows a single page of handwritten musical notation for an Overture. The music is written on 12 staves, organized into a single system. The notation includes various note values, rests, and dynamic markings. The paper is aged and shows some staining.

Mus. 2026-N-7

Sächs.
Landes-
Bibl.

(C x 756)

43
19

Entre

Handwritten musical notation for the 'Entre' section, consisting of four staves of music. The notation includes various note values, rests, and dynamic markings.

Aria

Handwritten musical notation for the 'Aria' section, consisting of three staves of music. The notation includes various note values, rests, and dynamic markings such as *p.* and *f.*

Andeau

Handwritten musical notation for the 'Andeau' section, consisting of four staves of music. The notation includes various note values, rests, and dynamic markings.

Menuet 3/4

Menuet 3/4 *Trio*

Fig 3/8

Vig. Feb

Ouvertur

A handwritten musical score for an Overture, consisting of 12 staves of music. The notation includes various note values, rests, and dynamic markings. The paper shows signs of age and wear.

Mus. 2026-N-7



(6x756)

44
2

Entre

Handwritten musical notation for the 'Entre' section, consisting of four staves of music. The notation includes various note values, rests, and clefs.

Aria

Handwritten musical notation for the 'Aria' section, consisting of three staves of music. The notation includes various note values, rests, and clefs. The first staff has a 3/4 time signature. Dynamics markings 'p' and 'f' are present.

Rondeau

Handwritten musical notation for the 'Rondeau' section, consisting of four staves of music. The notation includes various note values, rests, and clefs. The first staff has a C-clef and a common time signature. The section ends with a double bar line and a repeat sign.

Menuet

Menuet 2da

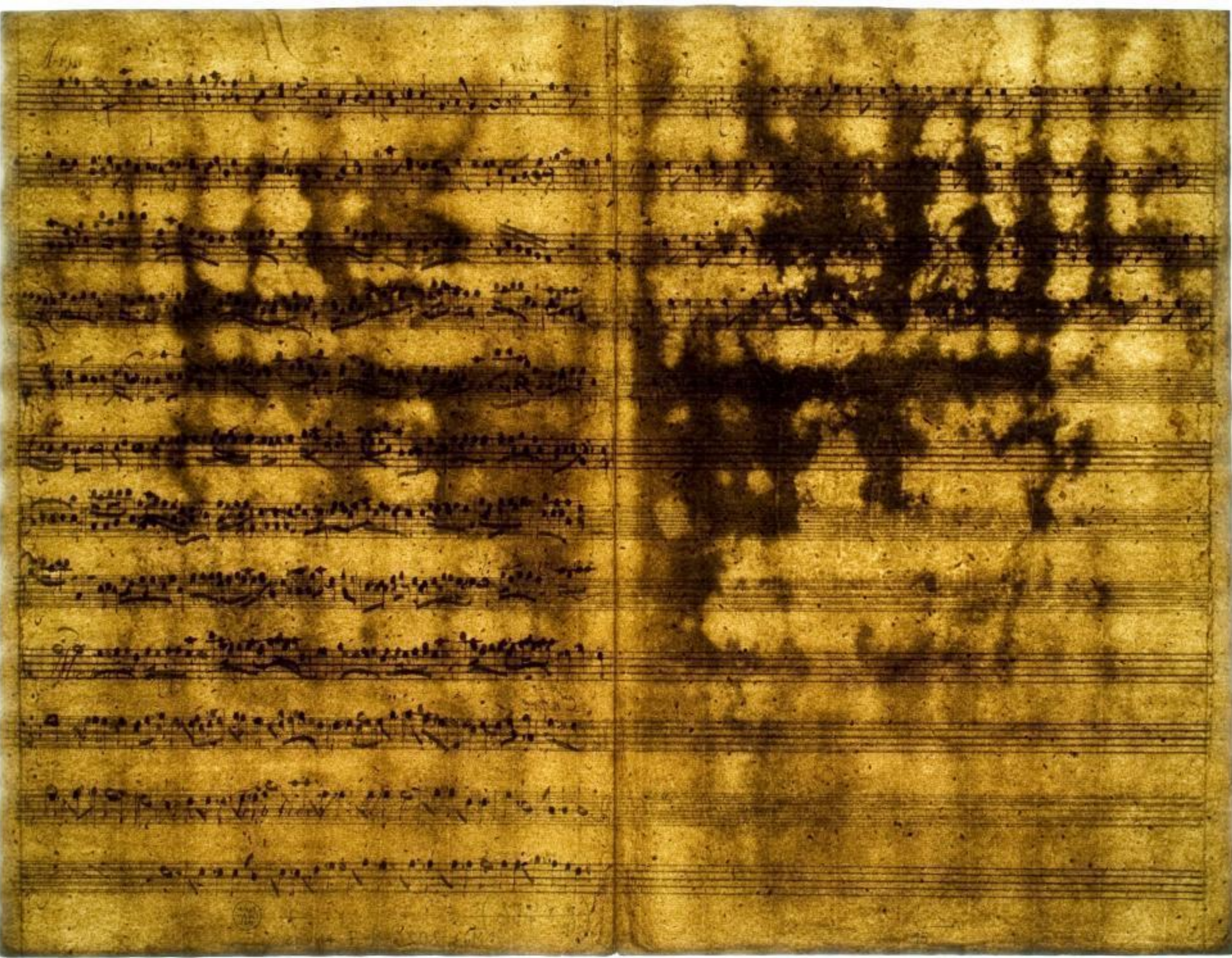
Gigue

This image shows a page of handwritten musical notation on aged, yellowed paper. The page contains 12 horizontal staves, each with five lines. The notation is written in dark ink and consists of small, circular notes, likely representing a specific musical style or a shorthand system. The notes are arranged in various patterns across the staves, with some staves showing more dense clusters of notes than others. The paper shows signs of age, including discoloration and some faint smudges. A small number '12' is written in the top right corner of the page.



Handwritten musical notation on the left page of an aged manuscript. The page contains approximately 12 staves of music, featuring various note values, rests, and clefs. The ink is dark and the paper is heavily aged and stained.

Handwritten musical notation on the right page of an aged manuscript. The page contains approximately 12 staves of music, featuring various note values, rests, and clefs. The ink is dark and the paper is heavily aged and stained. A large, irregular tear or hole is visible in the center of the page, partially obscuring the notation. The word "Maur" is written in the top left corner of the page.





Handwritten musical score on aged, yellowed paper, consisting of two pages. The notation is dense and includes various musical symbols such as notes, rests, and clefs. The paper shows signs of wear, including dark smudges and foxing. A vertical ruler is visible on the left edge of the image.

