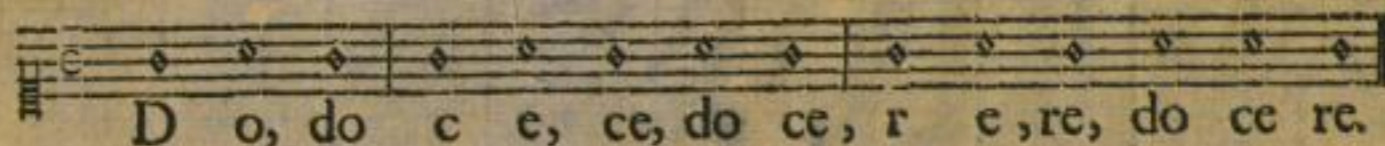


LITERÆ



SYLLABÆ



VOCABULA

Nomina

Verba



DECLINATIONES

	I.	II.	III.	IV.	V.	Tonus	
<i>Singularis</i>							
Nominativus	a, e, as, es,	der/die/das	er, ir, ur, US, um,	a, e, o, c, d, l, m, n, r, s, t, x,	us, u,	es	
Genitivus	Æ	des/der/des	I	IS	US	EI	
Dativus	Æ	dem/der/dem	O	I	UI	EI	
Accusativus	AM	den/die/das	UM	EM	UM	EM	
Vocativus	a, e, as, es	ô du	er, ir, ur, E, um,	a, e, o, c, d, l, m, n, r, s, t, x,	us, u,	es	
Ablativus	A	von dem/der	O	EI	U	E	
<i>Pluralis</i>							
Nominativus	æ	die	i	a	us	a	es
Genitivus	ARUM	derer	ORUM	UM	UUM	ERUM	
Dativus	IS	denen	IS	IBUS	IBUS	EBUS	
Accusativus	AS	die	OS	a	US	a	ES
Vocativus	æ	ô ihr	i	a	us	a	es
Ablativus	IS	von denen	IS	IBUS	IBUS	EBUS	