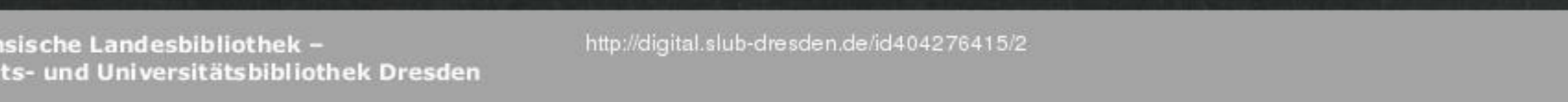
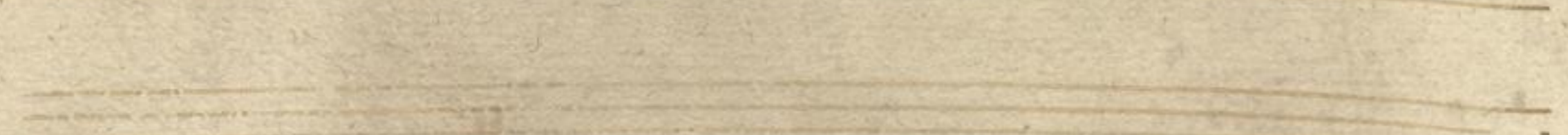
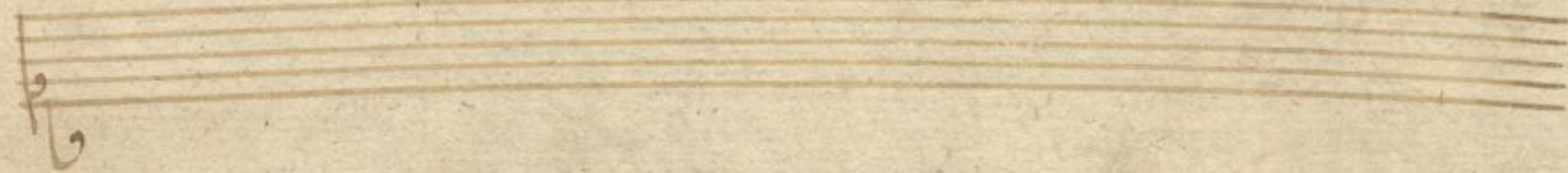
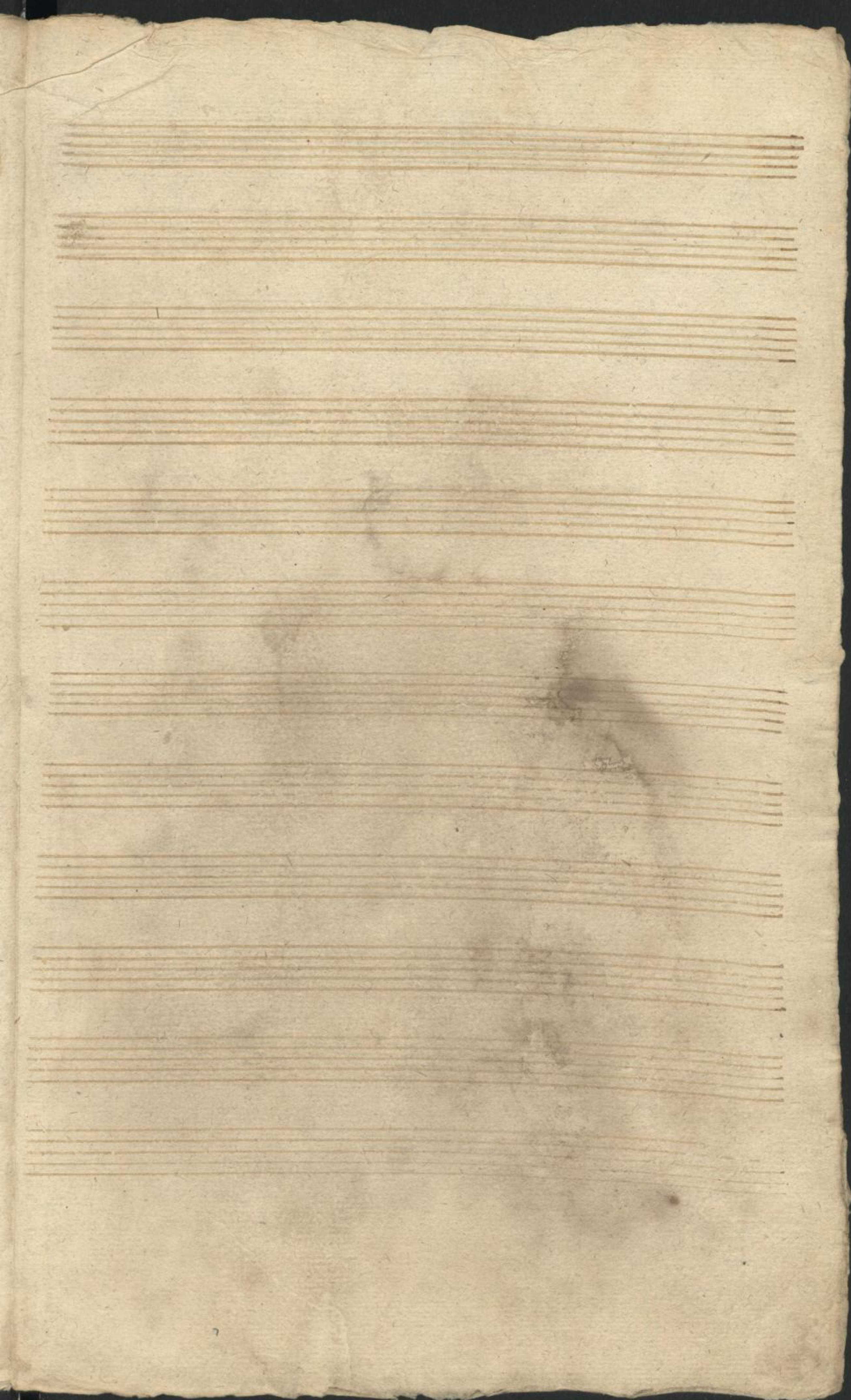




Ad 3^{to}.





1111



1111
E

Canto

Veni Creator Spiritus

resplende

perna gratia que tu creasti

perfecto

tu creasti

Fil preludium

cto = ra

Ne Solo

Joli

Volti subito

Handwritten musical notation on a five-line staff, featuring several notes and rests.

Handwritten musical notation on a five-line staff, including the word *Andante* and the instruction *Alto:*.

Multiple empty five-line musical staves on aged paper.

7277
E12

Mus.

Veni Creator Spiritus mentes sanctorum

visita imples superna gratia quae tu creasti

pectora quae tu creasti pectora quae tu creasti

Prælium

pe - ctora.

Te Deum



Handwritten musical notation on a five-line staff, featuring a treble clef and a series of notes and rests.

Handwritten musical notation on a five-line staff, featuring a treble clef, notes, rests, and a double bar line followed by the text "No 3to".

Tenore:

Veni Creator Spiritus mentes tuorum visita

ta imple superna gratia quae tu creasti pecto-

ra quae tu creasti - pe- ctora quae tu - cre-

asti pecto: ra

Fil praeludium

No. 26

Adagio

No. 36

Volo subito

1271
E 11

Tenore :

Veni Cre-ator Spiritus mentes nostrorum visi-

ta imple superna gratia quae tu creasti pecto-

ra quae tu creasti pa-ctora quae tu - crea-

Filialium

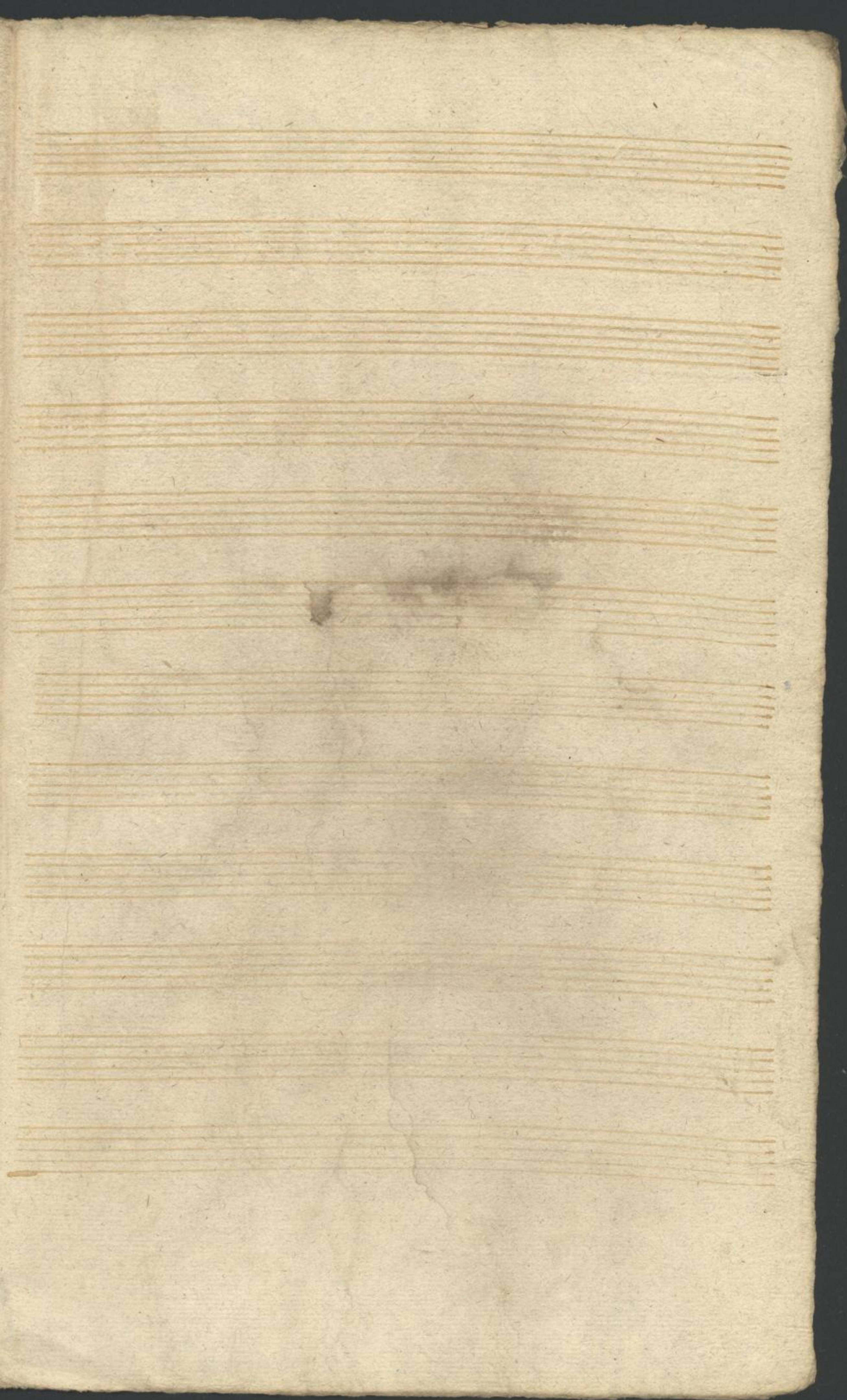
sti pectora

Ad Solo:

37

Adagio

Ad Solo Volti subito



Basso

Veni Creator Spiritus mentes tuorum

visita imple superna gratia que tu cre-

asti pecto: ra que tu creasti pectora que

Fit preludium

tu creasti pecto: ra

Fit No 3vo:

Soli

adagio

V.S.

Torale
C-c-c-c | c-c-c-c | c-c-c-c | #c-c-c-c | #c-c-c-c

C-c-c-c | c-c-c-c | c-c-c-c | c-c-c-c | c-c-c-c *adagio*

C-c-c-c | #c-c-c-c | *Ho Ho Ho*

Empty musical staff

Empty musical staff

Empty musical staff

Empty musical staff

Empty musical staff

Empty musical staff

Empty musical staff

Empty musical staff

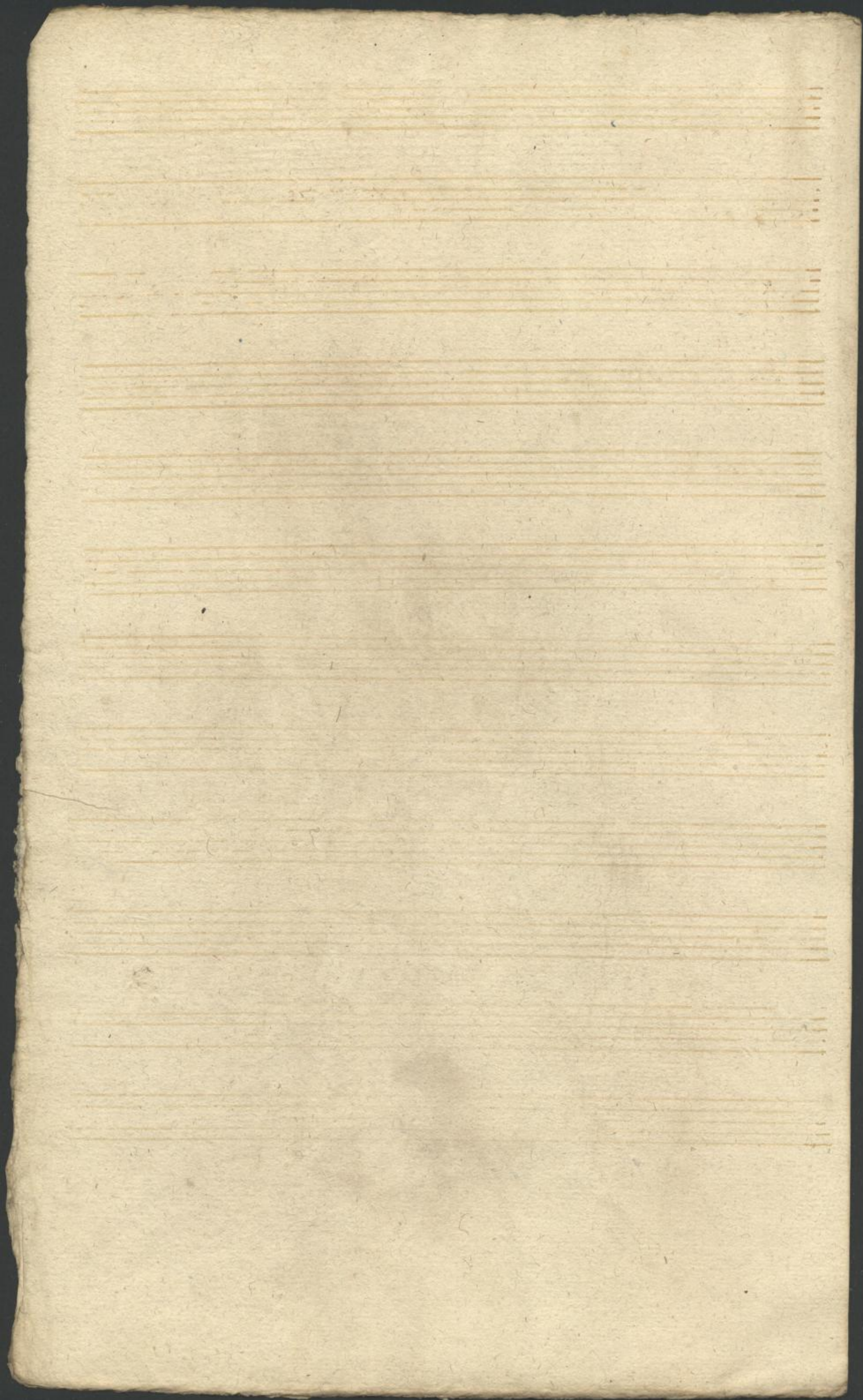
Empty musical staff

Empty musical staff

Empty musical staff

Empty musical staff

Empty musical staff



Basso:

Veni Creator Spiritus mentes nostrorum

visita imple superna gratia que tu cre-

asti pectora que tu creasti pectora que

Fit preliudium

tu creasti pectora

Ad 3.^o

Soli

Volte presto

forte
Musical notation on a five-line staff, starting with a treble clef and a common time signature. The notes are mostly quarter notes and eighth notes.

Musical notation on a five-line staff, continuing from the previous staff. It includes a dynamic marking *adagio* written above the staff.

Musical notation on a five-line staff, starting with a treble clef and a common time signature. The notes are mostly quarter notes and eighth notes.

Empty musical staff.

Empty musical staff.

Empty musical staff with a large water stain in the center.

Empty musical staff.

Empty musical staff.

Empty musical staff.

Empty musical staff.

Empty musical staff.

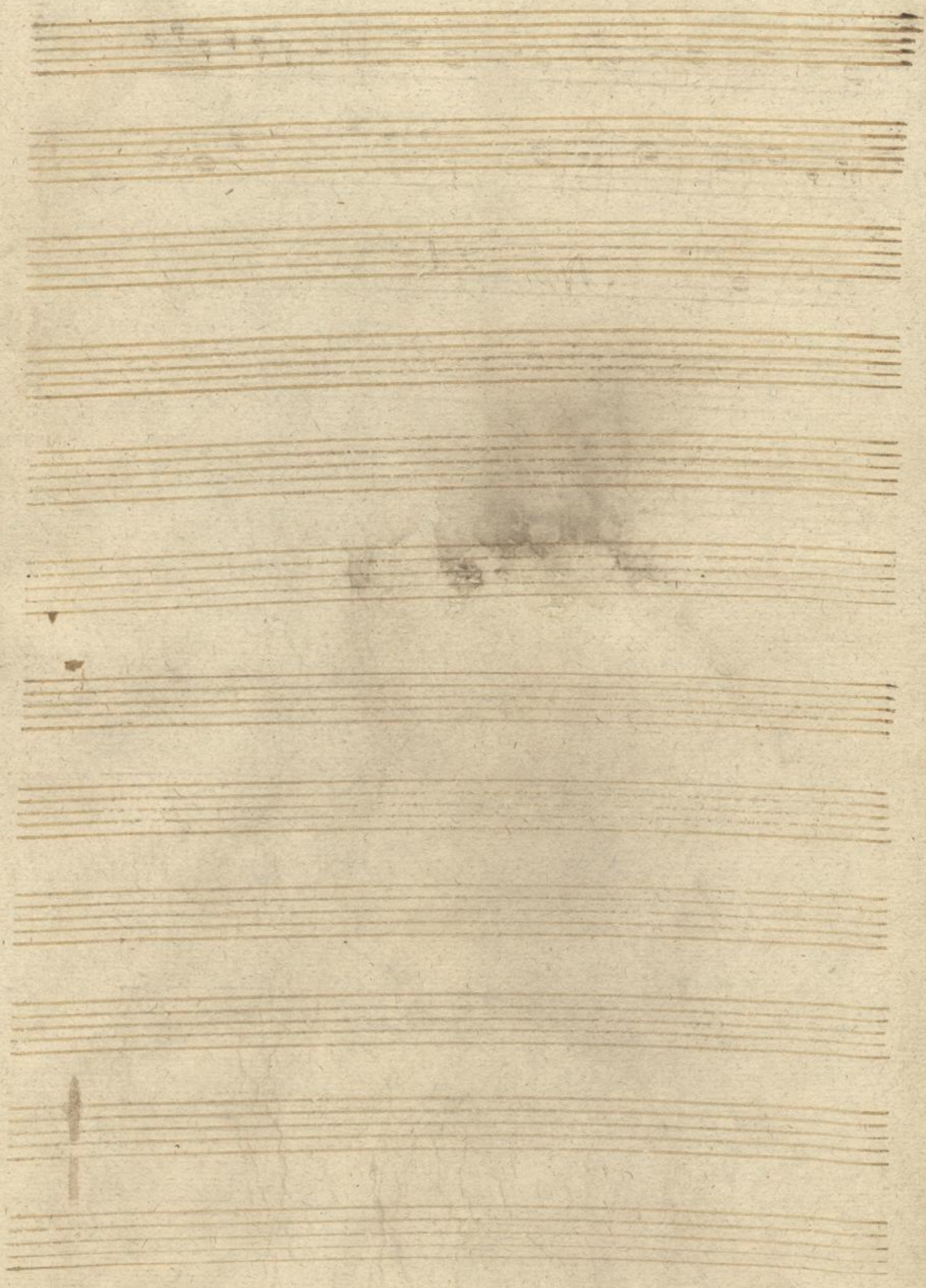
Empty musical staff.

Empty musical staff.

Empty musical staff.

Empty musical staff.

Empty musical staff.



Violoncello:

Veni Creator

Veni Creator

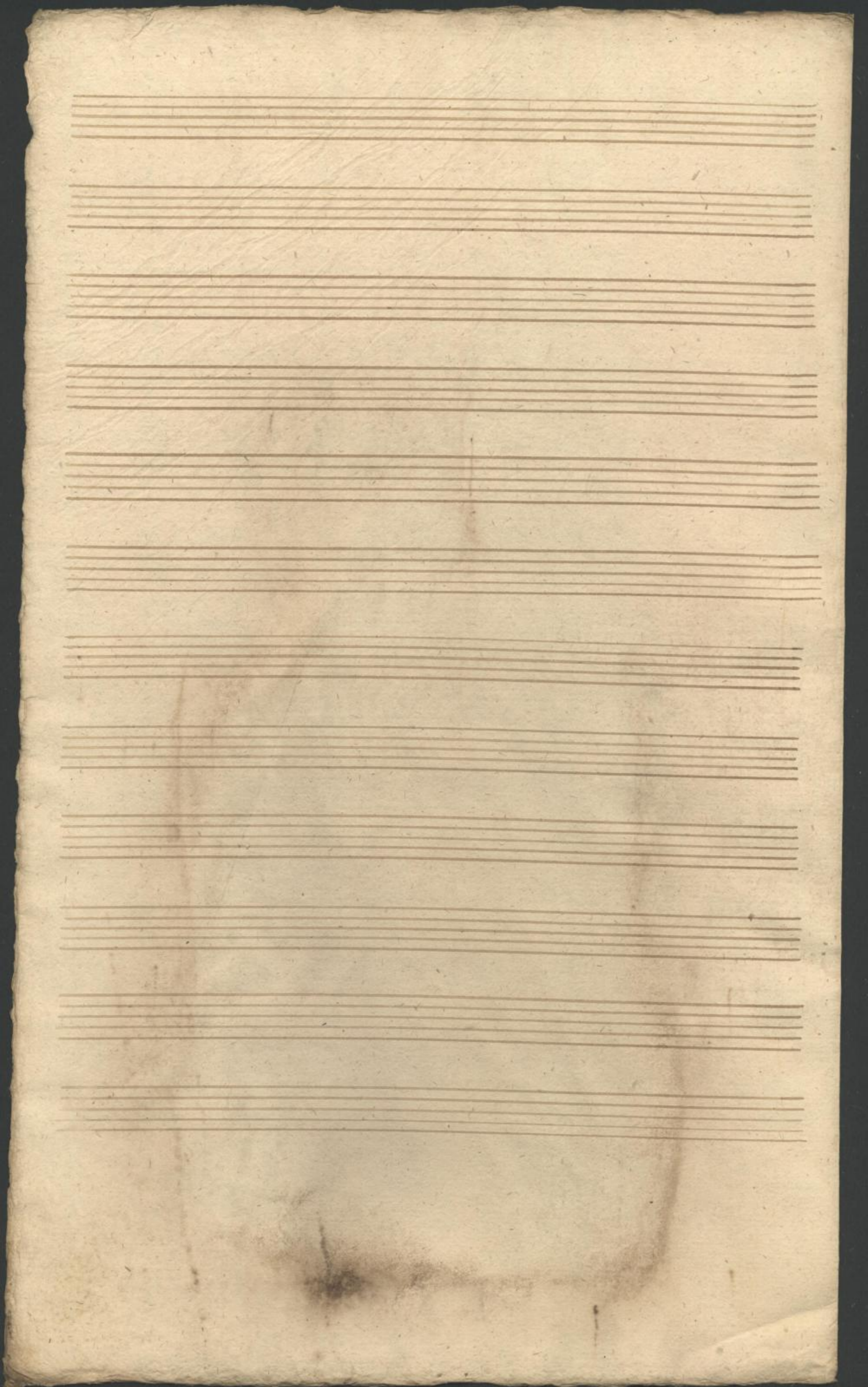
Tenor:

Veni Creator

Al. Preludium Veni Creator Salcepo

MUS. 1271-E 31,1





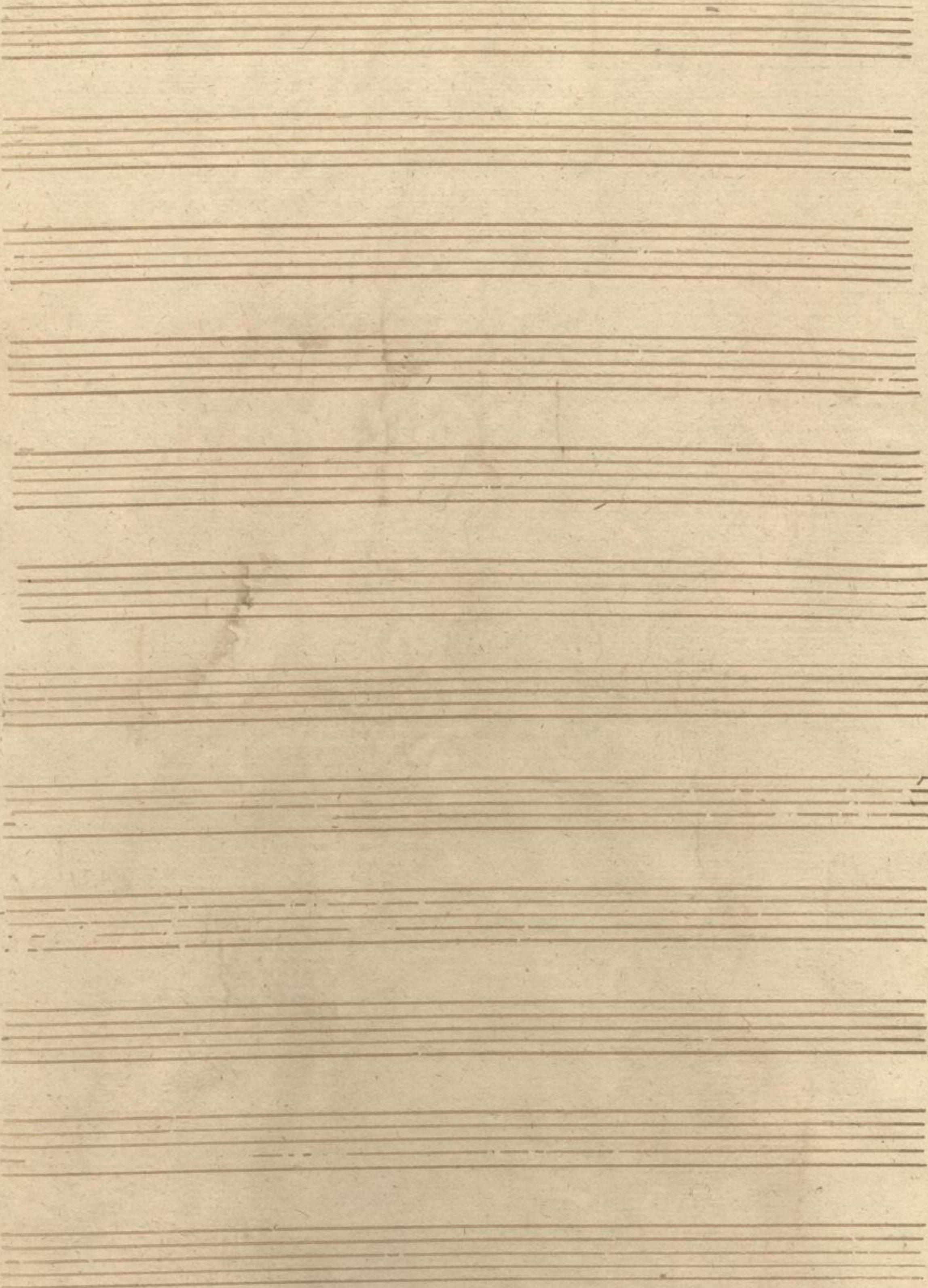
Violone Ripieno:

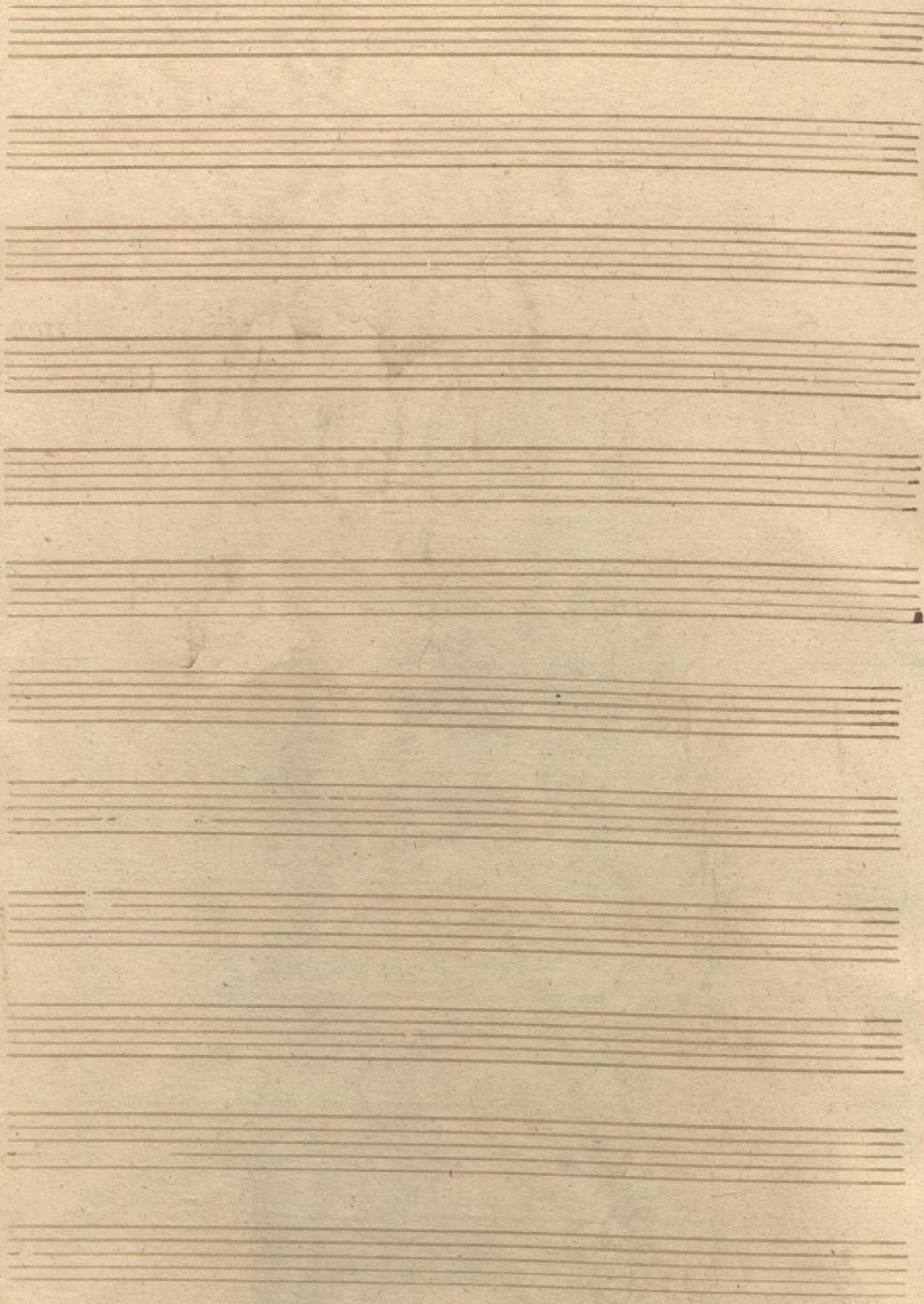
Handwritten musical notation for Violone Ripieno, consisting of four staves. The first three staves contain a melodic line with various note values and rests. The fourth staff begins with a double bar line and contains the text: *Introduzione Veni* and *Creator da capo:* followed by a double bar line.

Ten empty musical staves, arranged in two groups of five, for further notation.

MUS. 1271-E-1,1







Organo

Veni Creator:

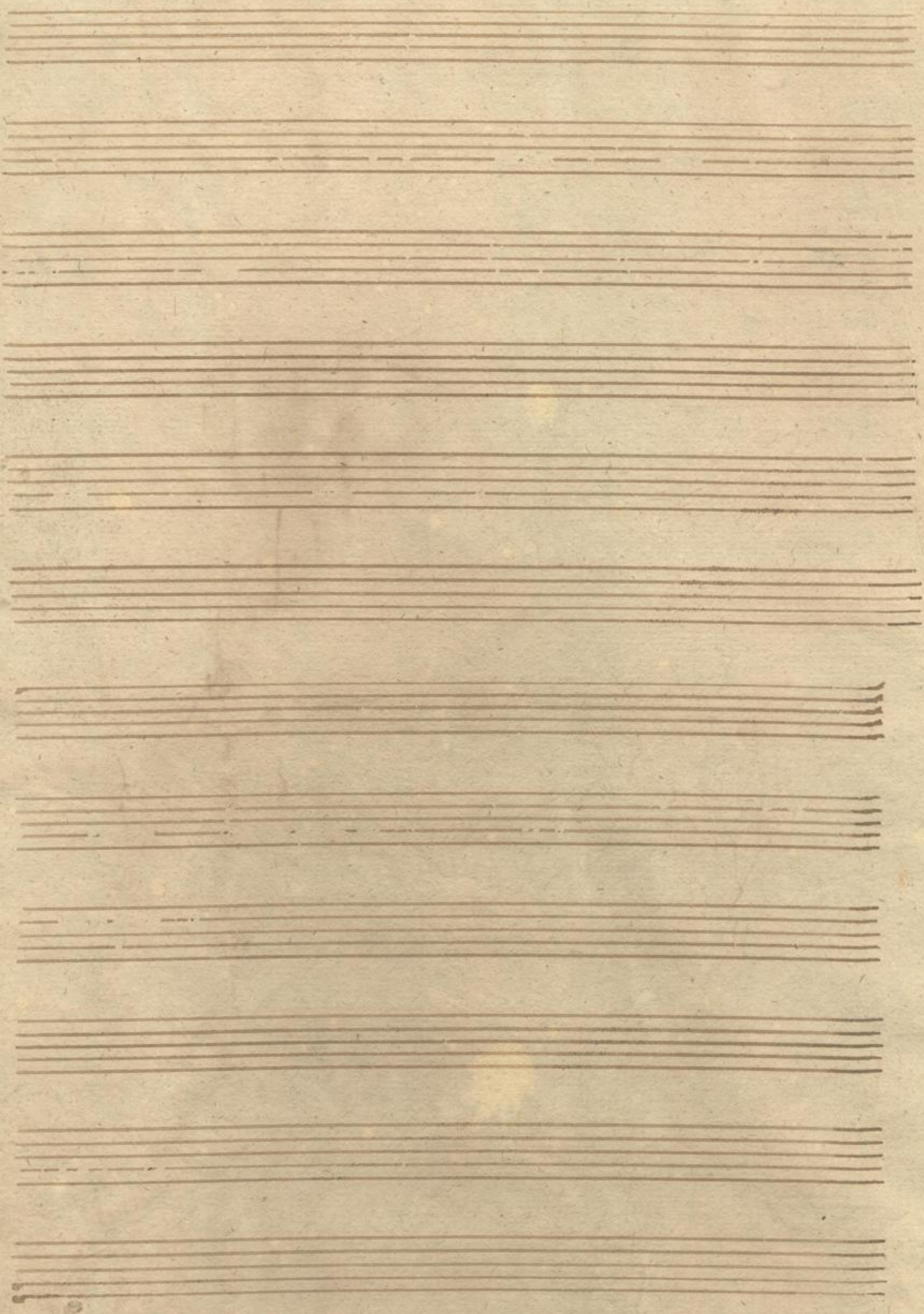
Tenor 3 3 3 3

Adagio:

F. Reliquium
Veni Salva

MUG. 1271-E-1,1





Organo.

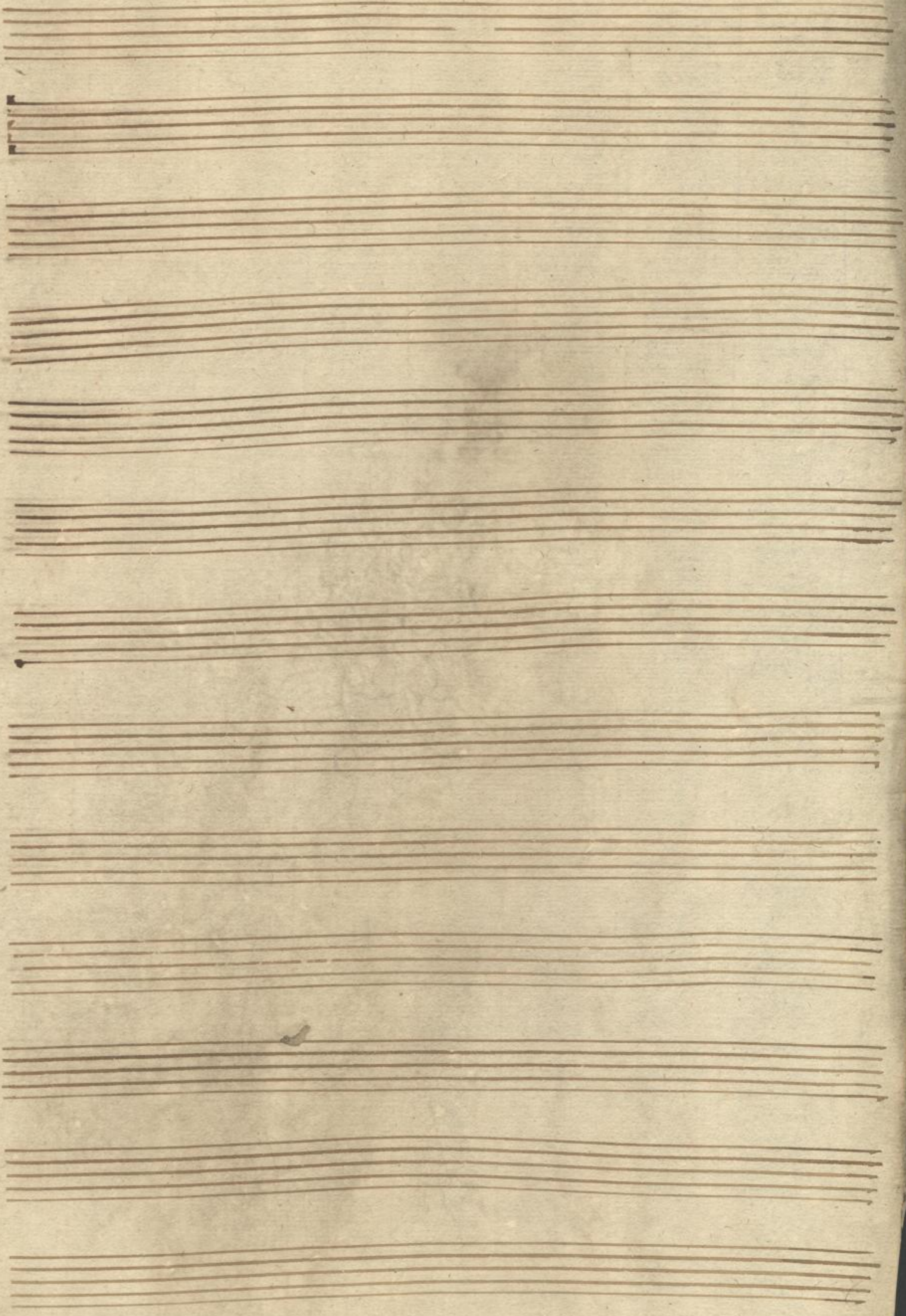
Veni Creator.

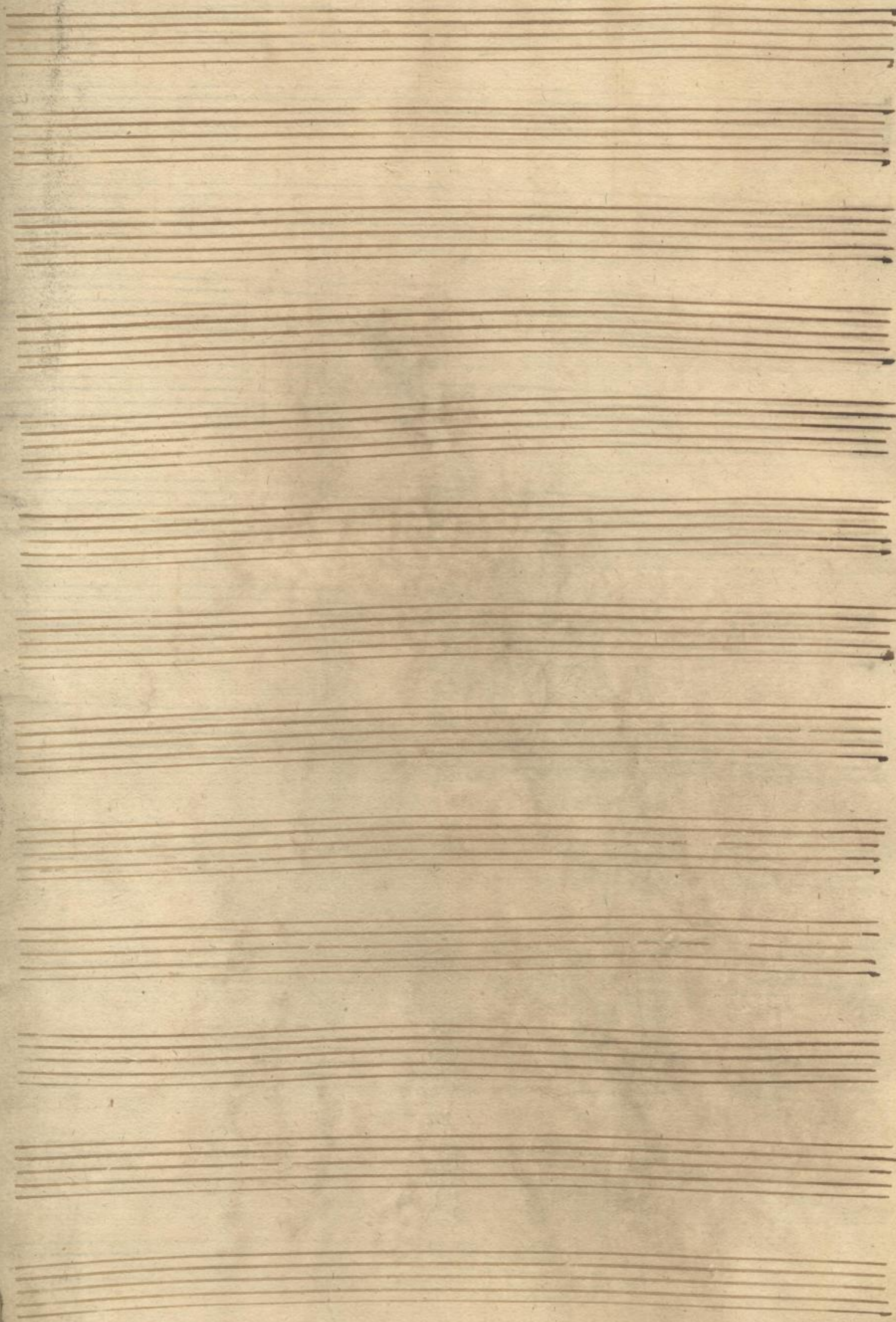
Handwritten musical score for organ, consisting of three staves. The first staff is in C major, the second in D major, and the third in E major. The music features various rhythmic values and includes numerical figures (6, 43, 76, 43, 65, 43, 5) and a "Passag." marking at the end.

Ten empty musical staves for organ.

MUS. 1271-E-1,1







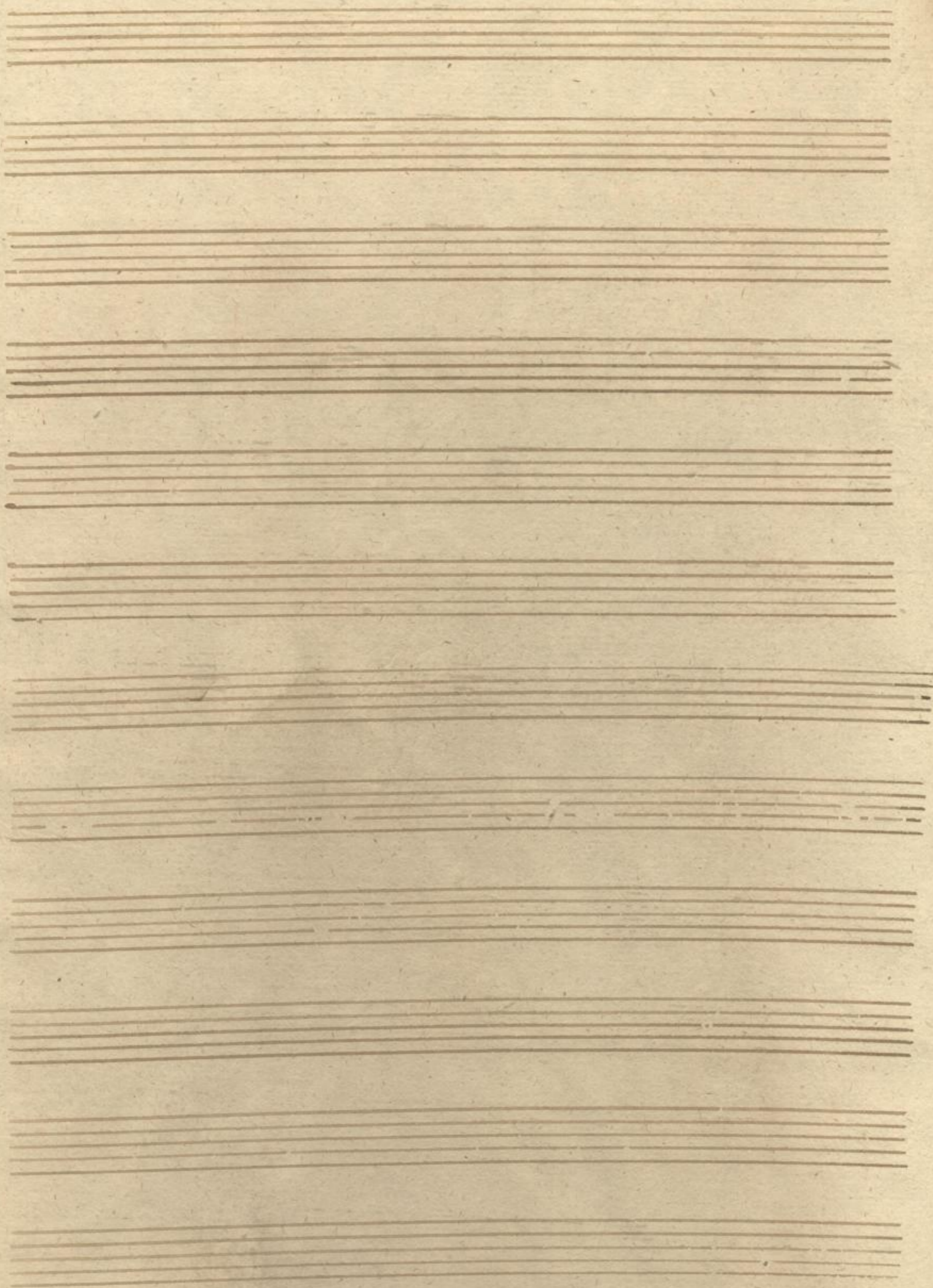
Tagollo

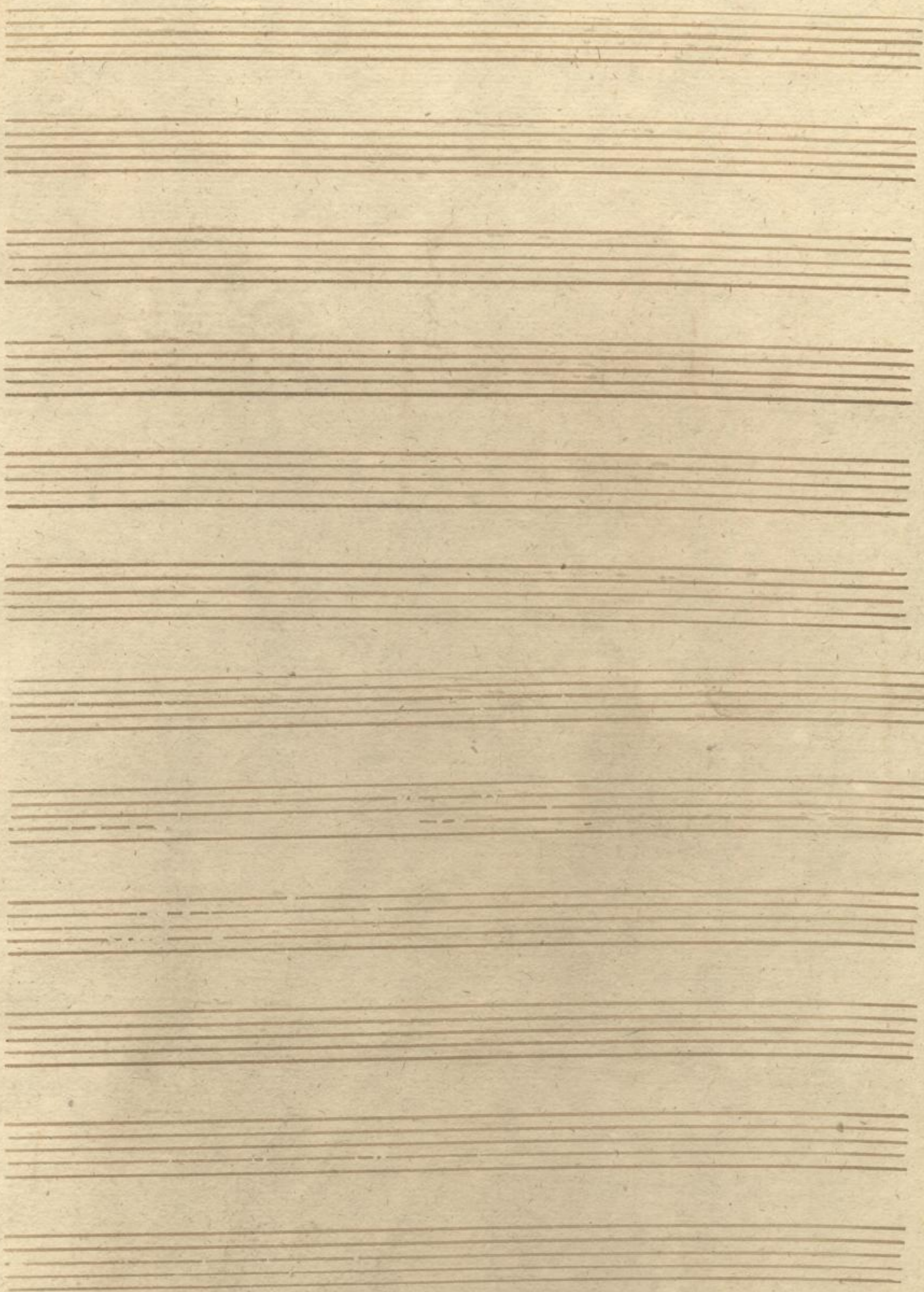
Veni Creator:

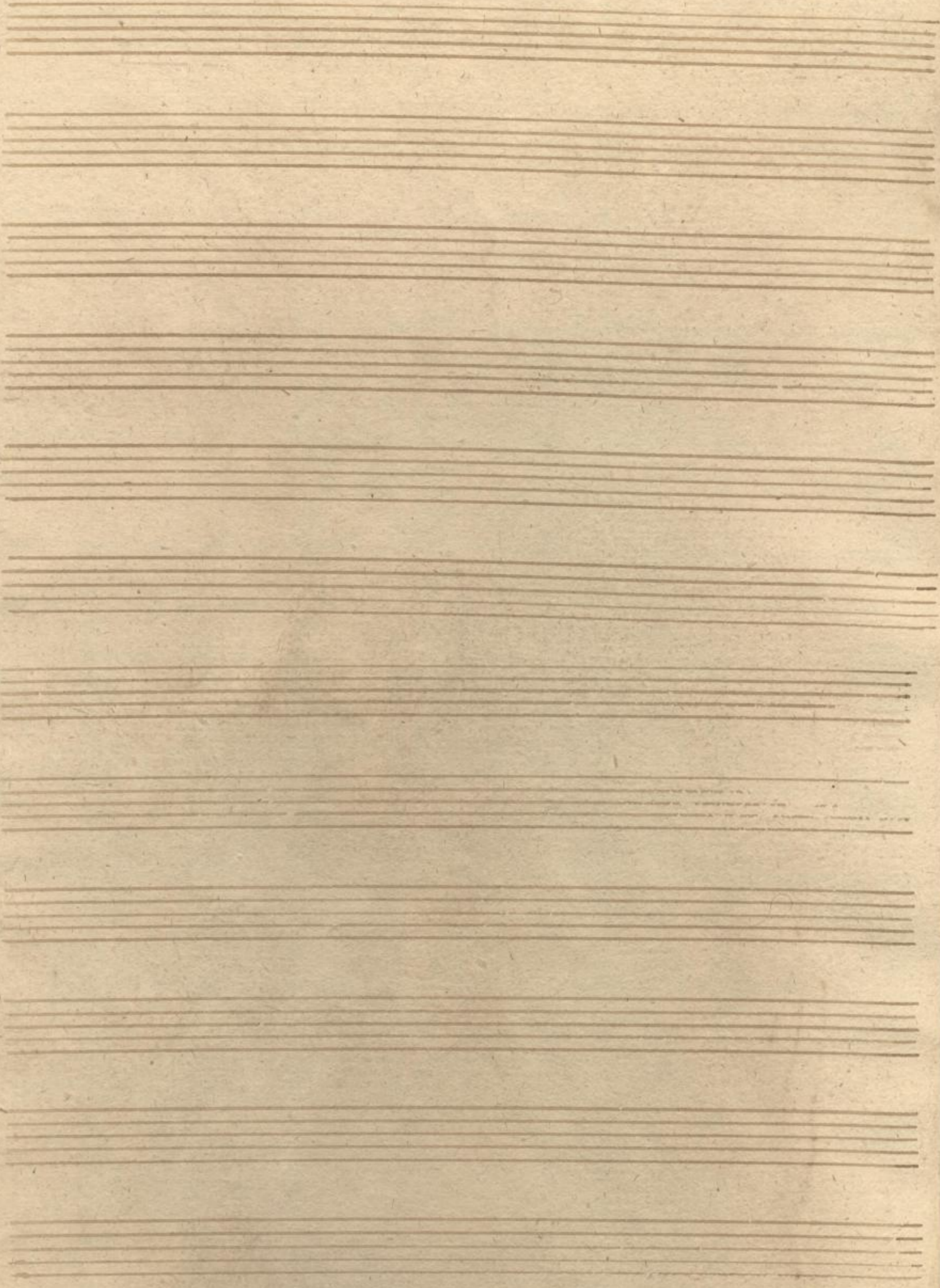
Fili prelidium
Veni Creator Salva

Mus. 1271-E-1,1









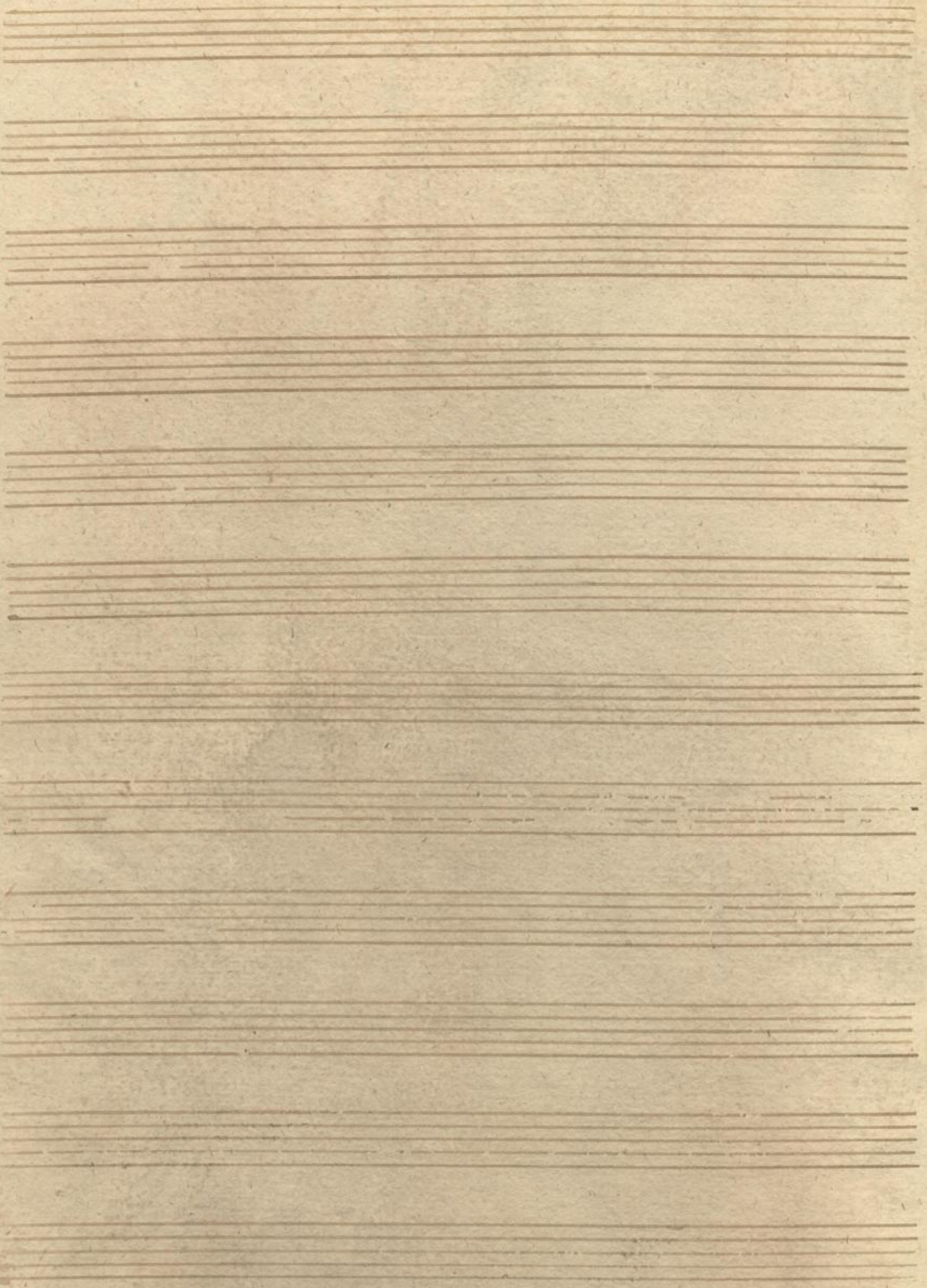
Tagallo.

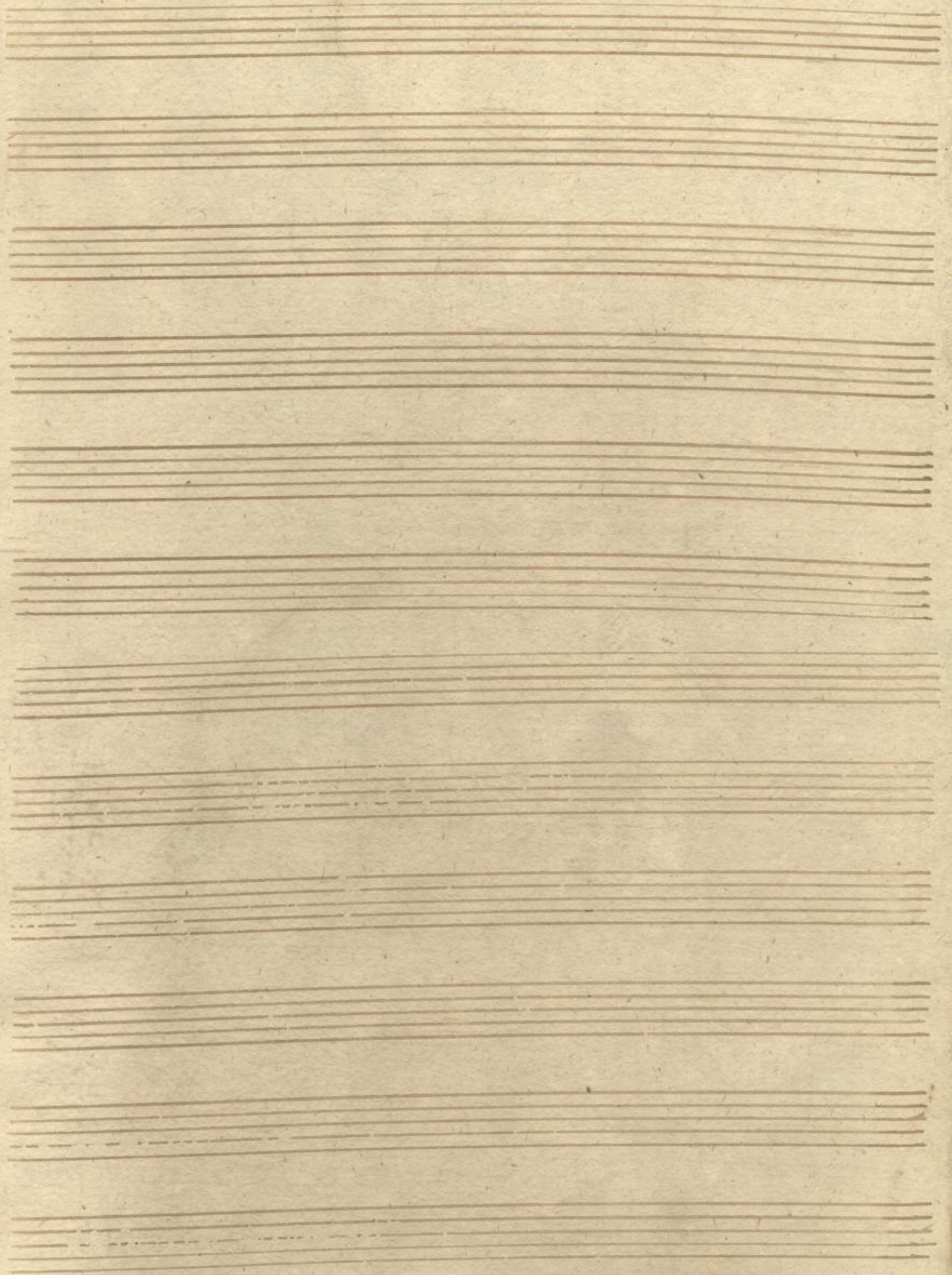
Veni Creator:

*Fitzpreludium
Veni Creator Salapo*

Mus. 1271 - E - 1,1







Soprano.

S. Ventura.

Mus. 1271-E-1,1



